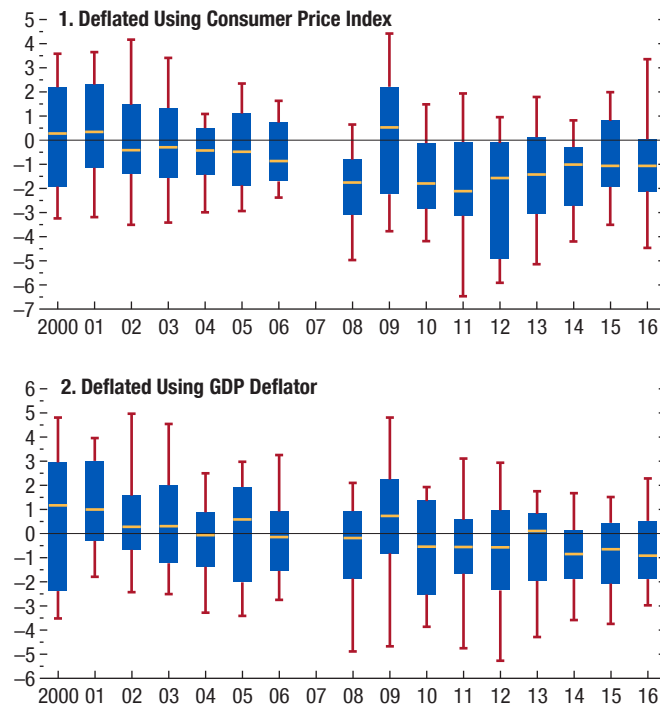


**Annex Figure 2.2.1. Distribution of Real Compensation Growth Measures**

*(Percentage-point difference relative to 2007)*



Sources: Eurostat; national authorities; Organisation for Economic Co-operation and Development; and IMF staff calculations.

Note: The sample excludes Baltic countries. The wage variable used is compensation per hour of workers excluding the self-employed. The horizontal line inside each box represents the median, the upper and lower edges of the box show the top and bottom quartiles, and the red markers denote the top and bottom deciles.