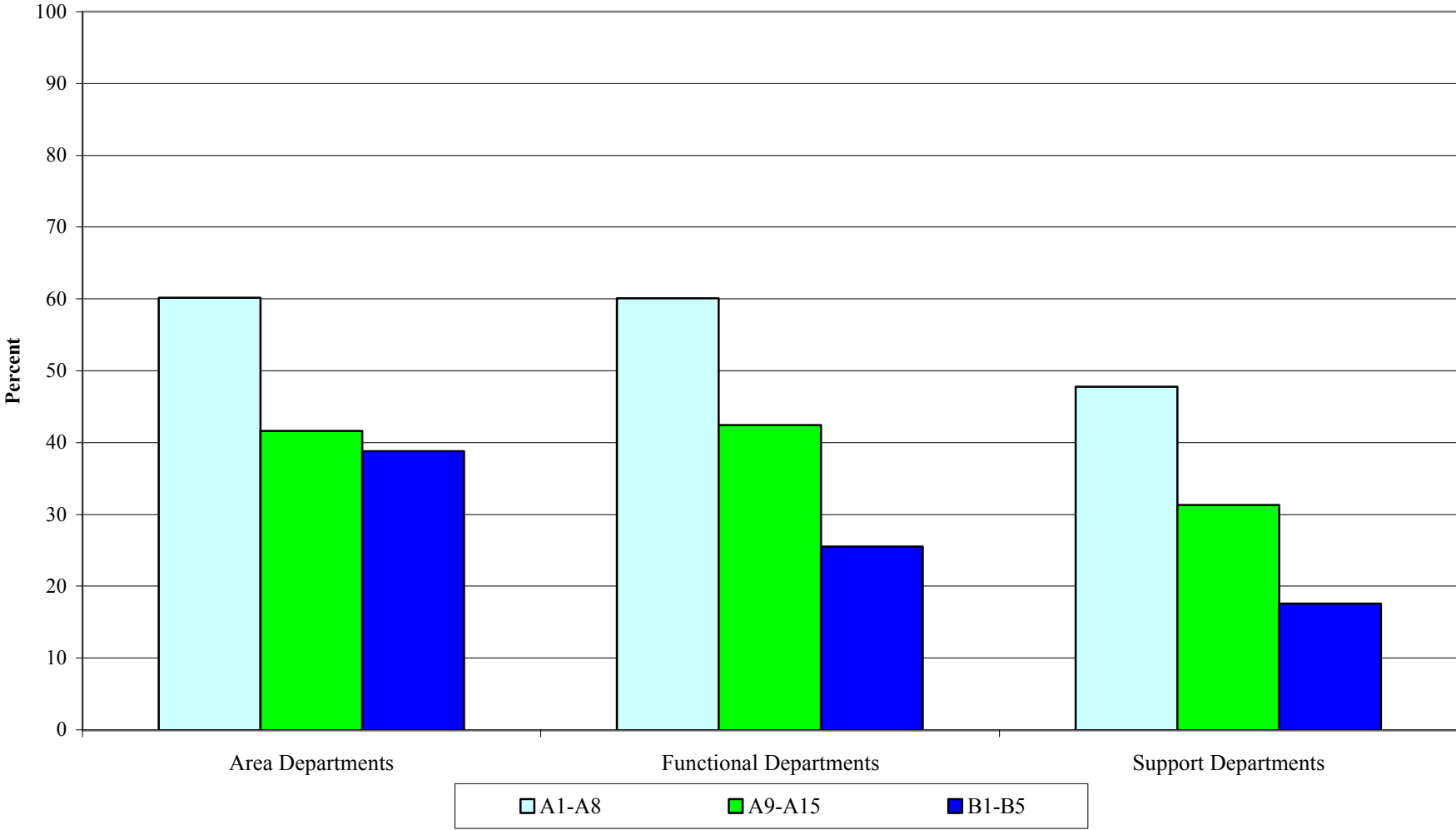


Figure 1. Share of Developing Country Nationals by Department Type and Grade Grouping ^{1/}



1/ Total in each grade group is all developing country and industrial country staff.

Figure 2a. Share of A9-A15 Developing Country Nationals by Department

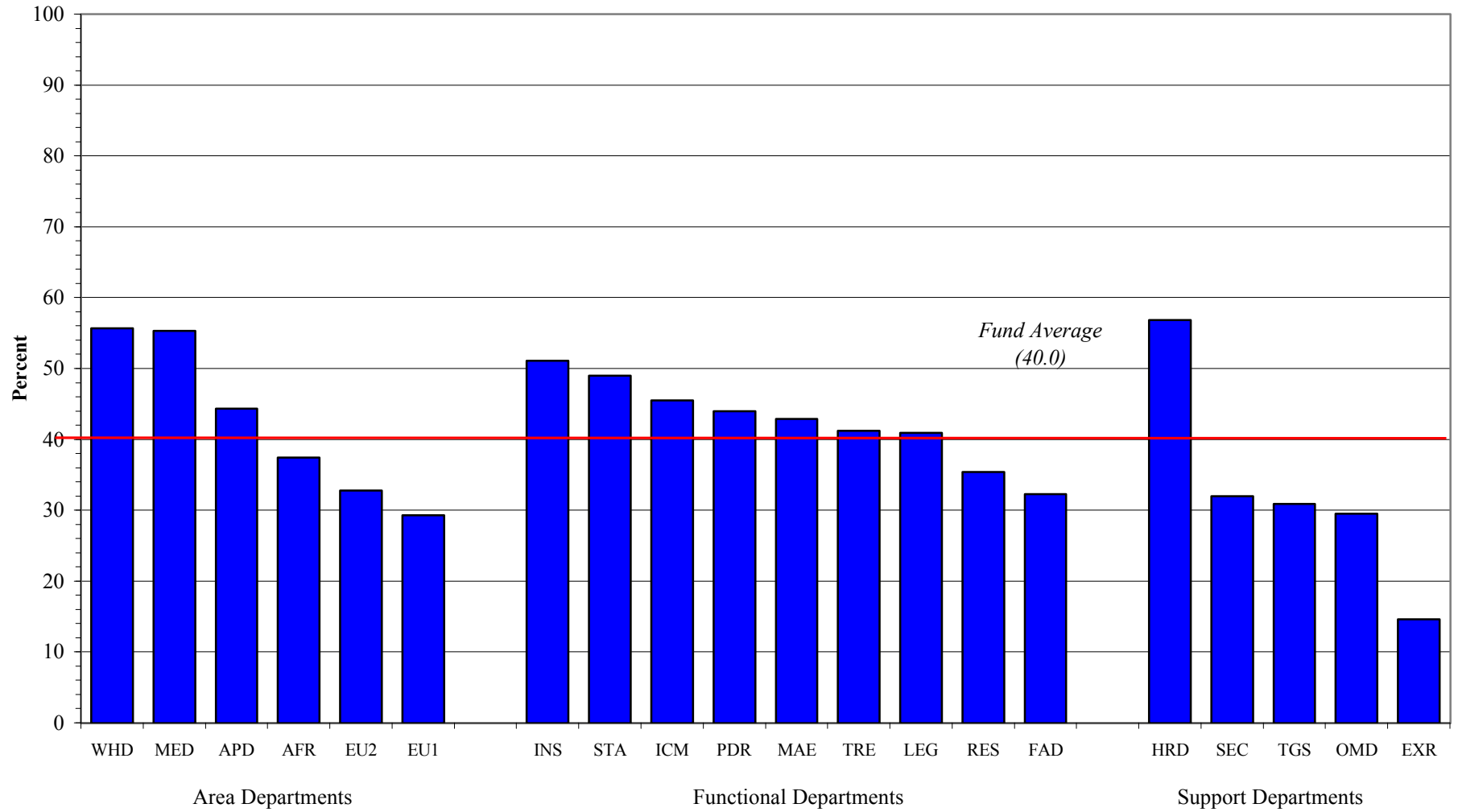


Figure 2b. Share of B1-B5 Developing Country Nationals by Department

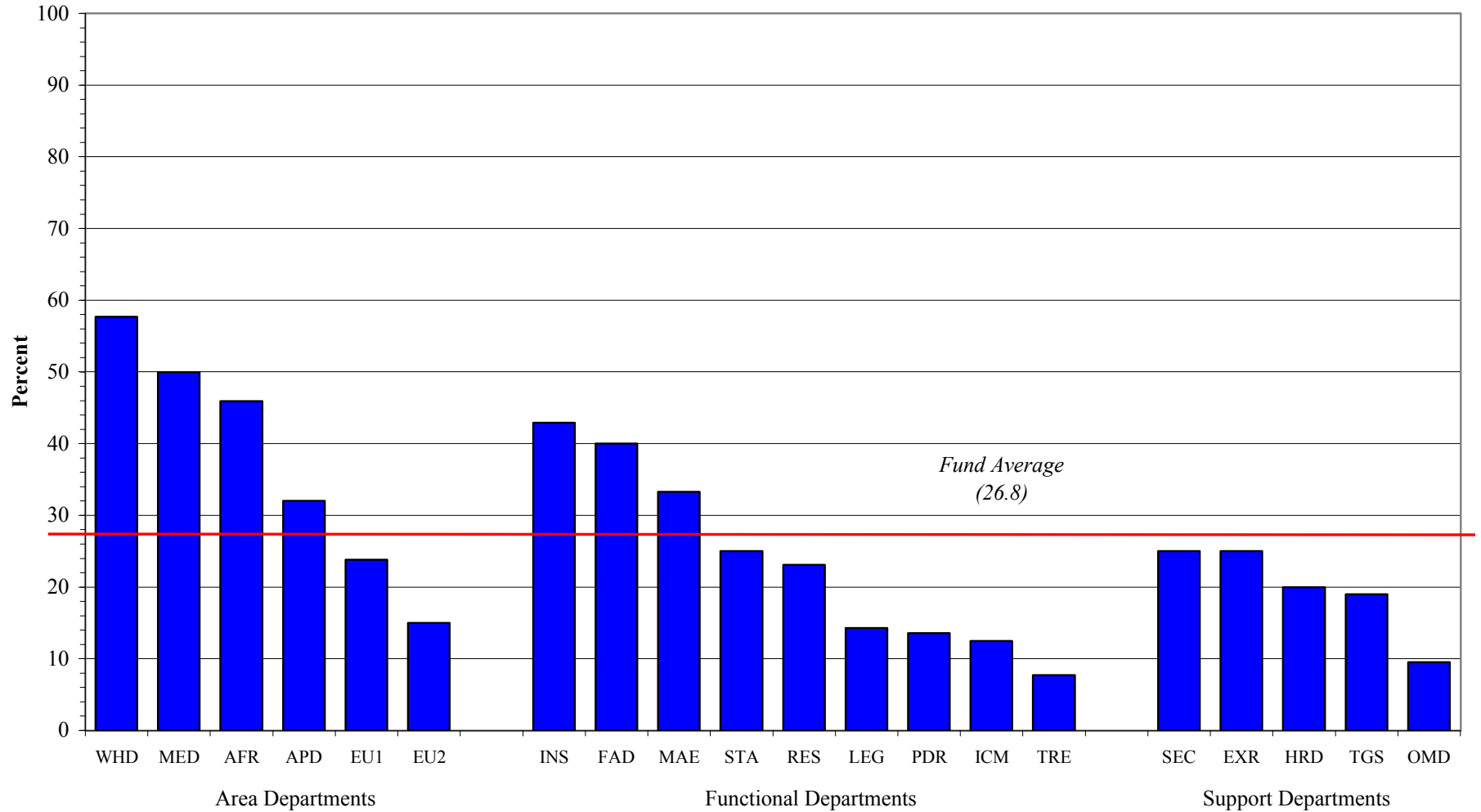
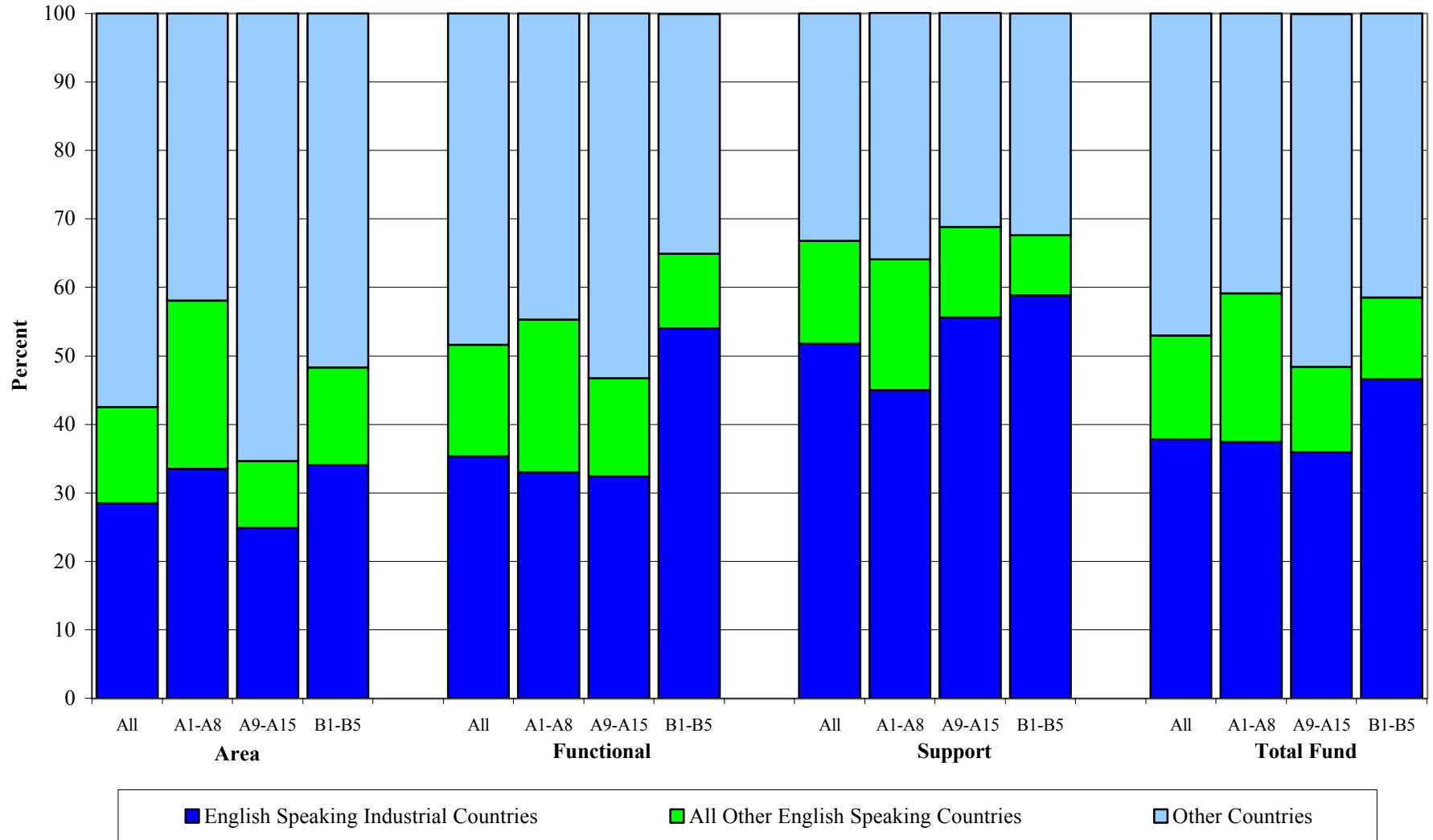
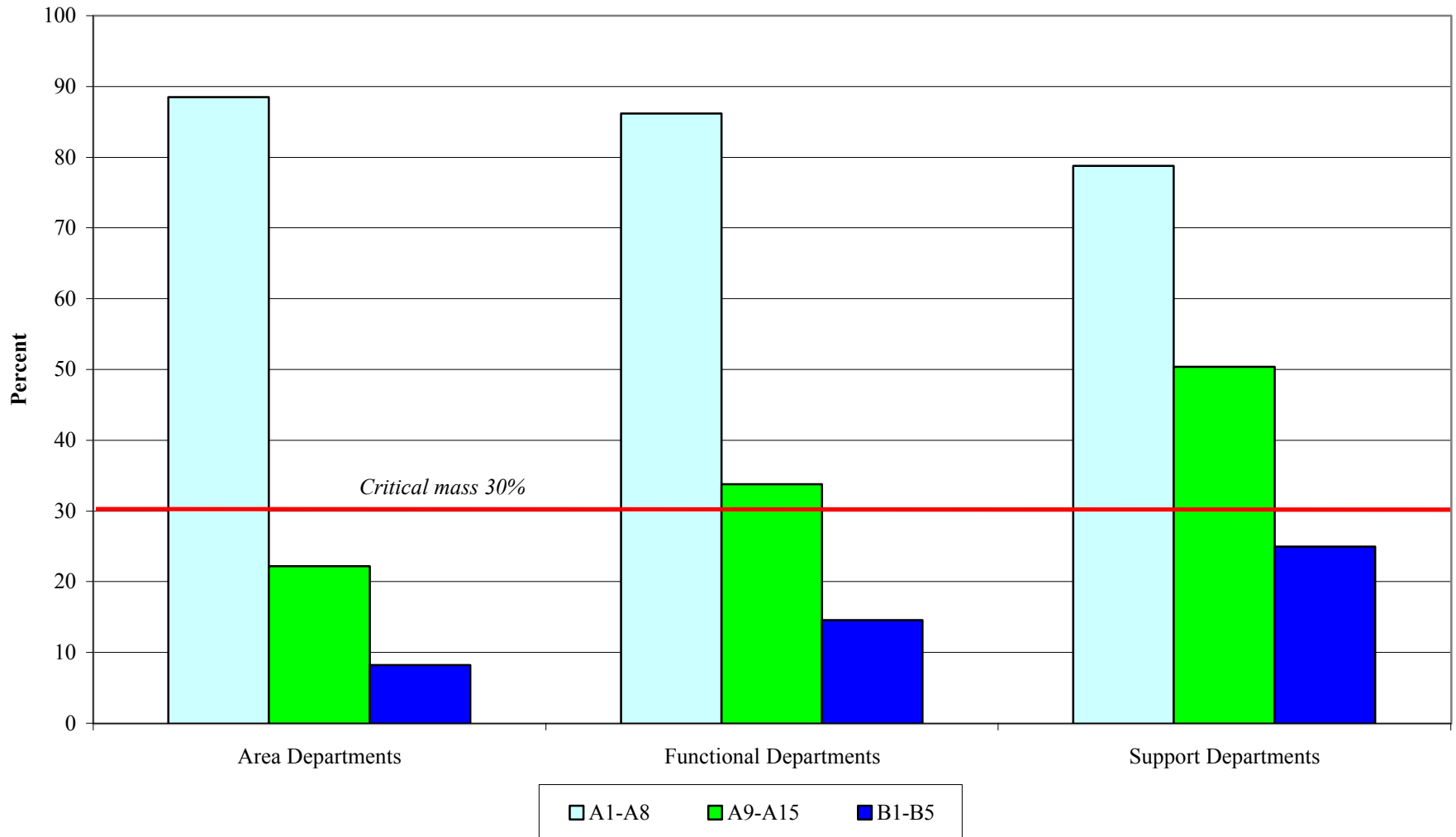


Figure 3. Staff by Language and Developing/Industrial Country, by Department Type and Grade Grouping^{1/}



^{1/} 100% is all staff in the respective grade

Figure 4. Share of Women by Department Type and Grade Grouping ^{1/}



1/ Total in each grade group is all women and men.

Figure 5a. Share of A9-A15 Women by Department

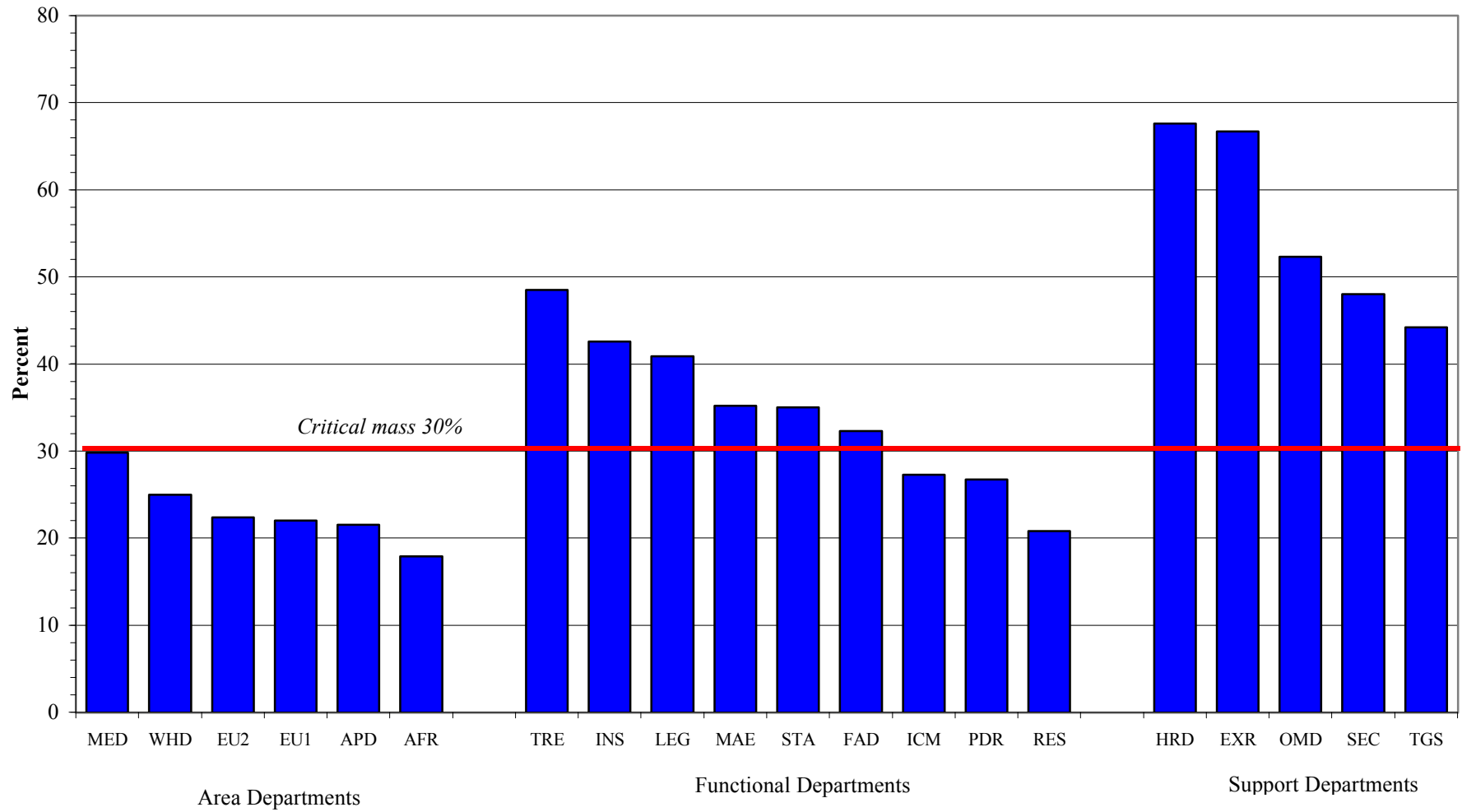


Figure 5b. Share of B1-B5 Women by Department

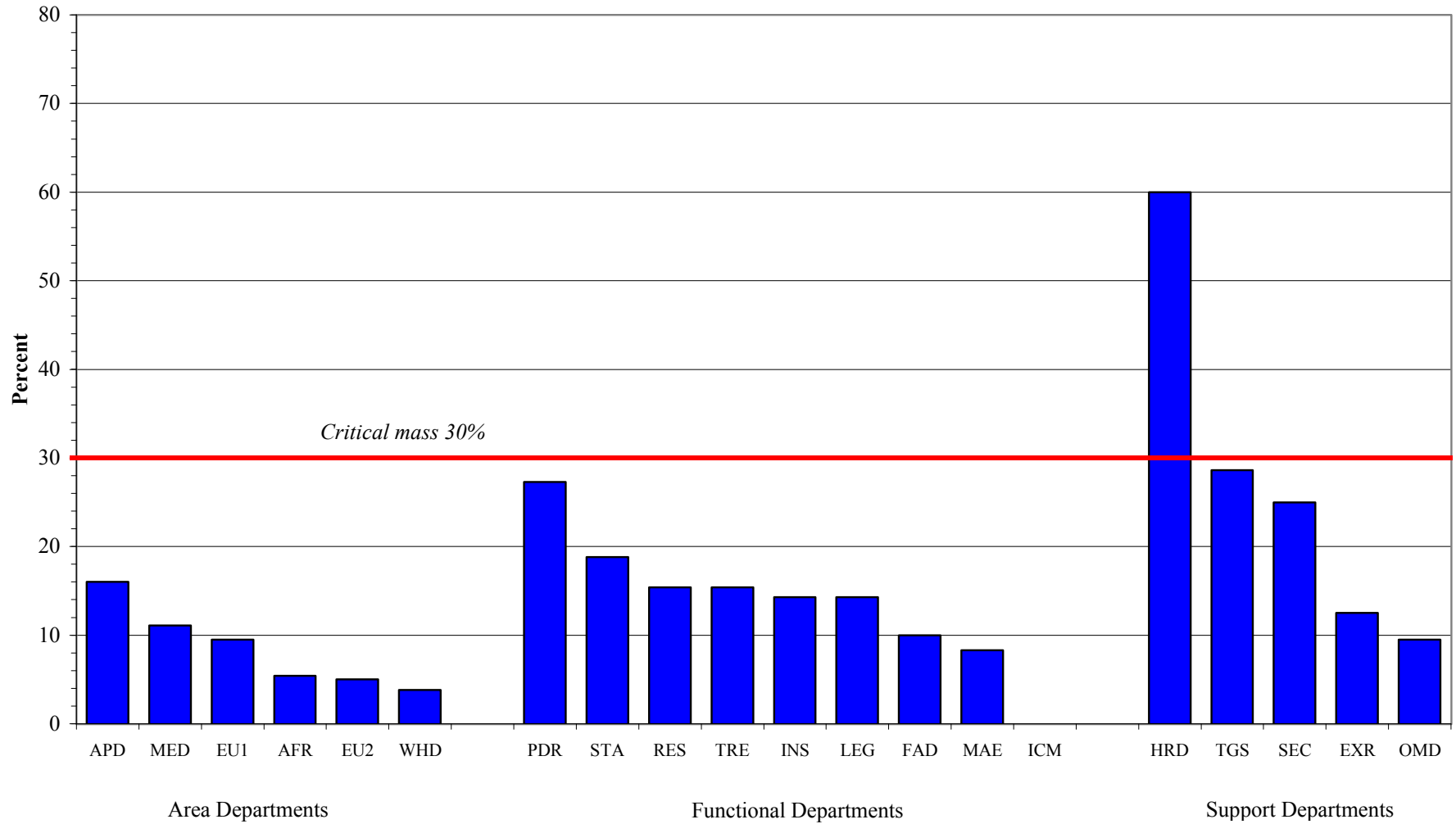


Figure 6. Staff by Developing/Industrial Country, Career Stream, and Grade Grouping

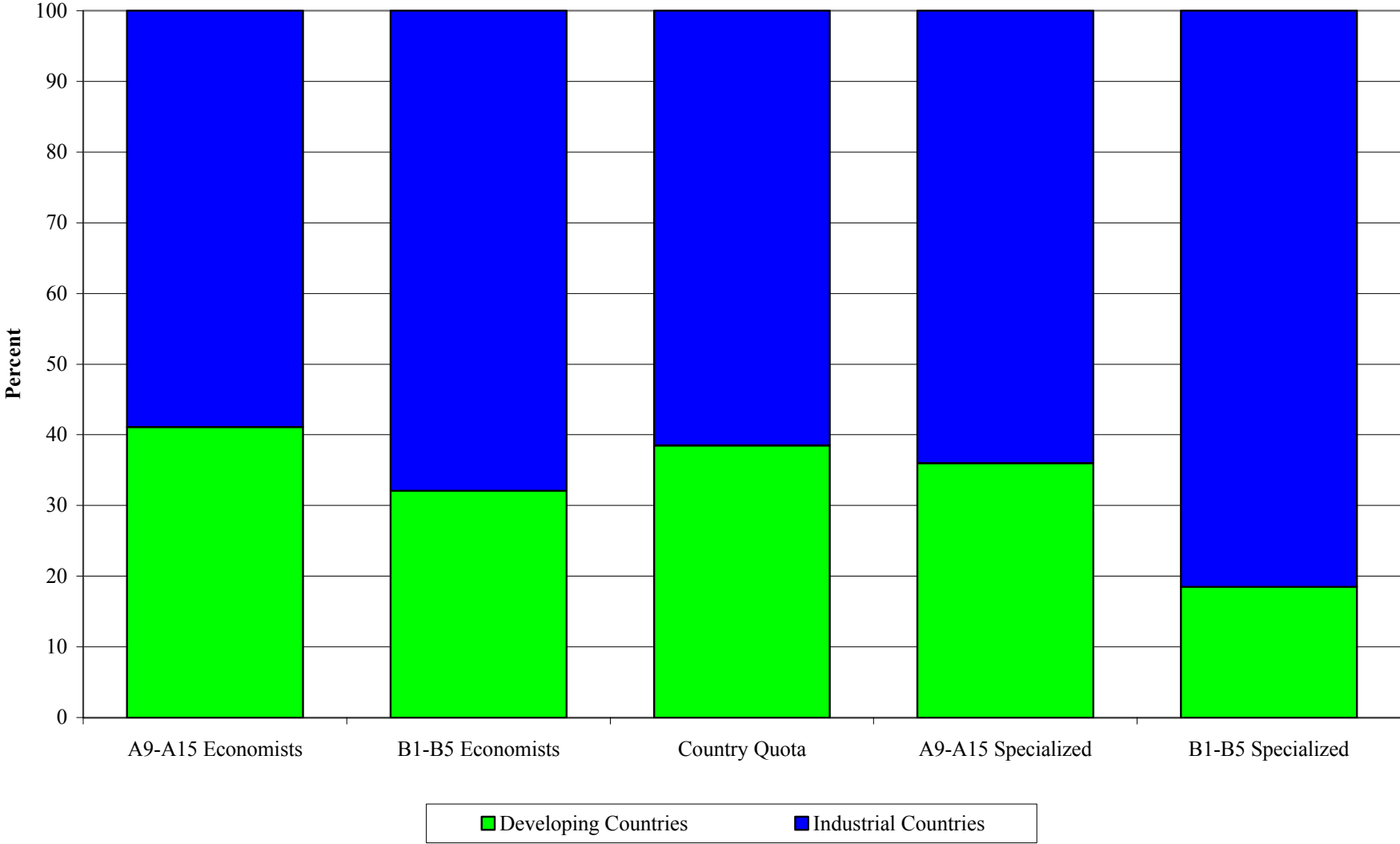


Figure 7. Share of Developing Country Nationals by Career Stream and Grade Grouping, 1997-2001

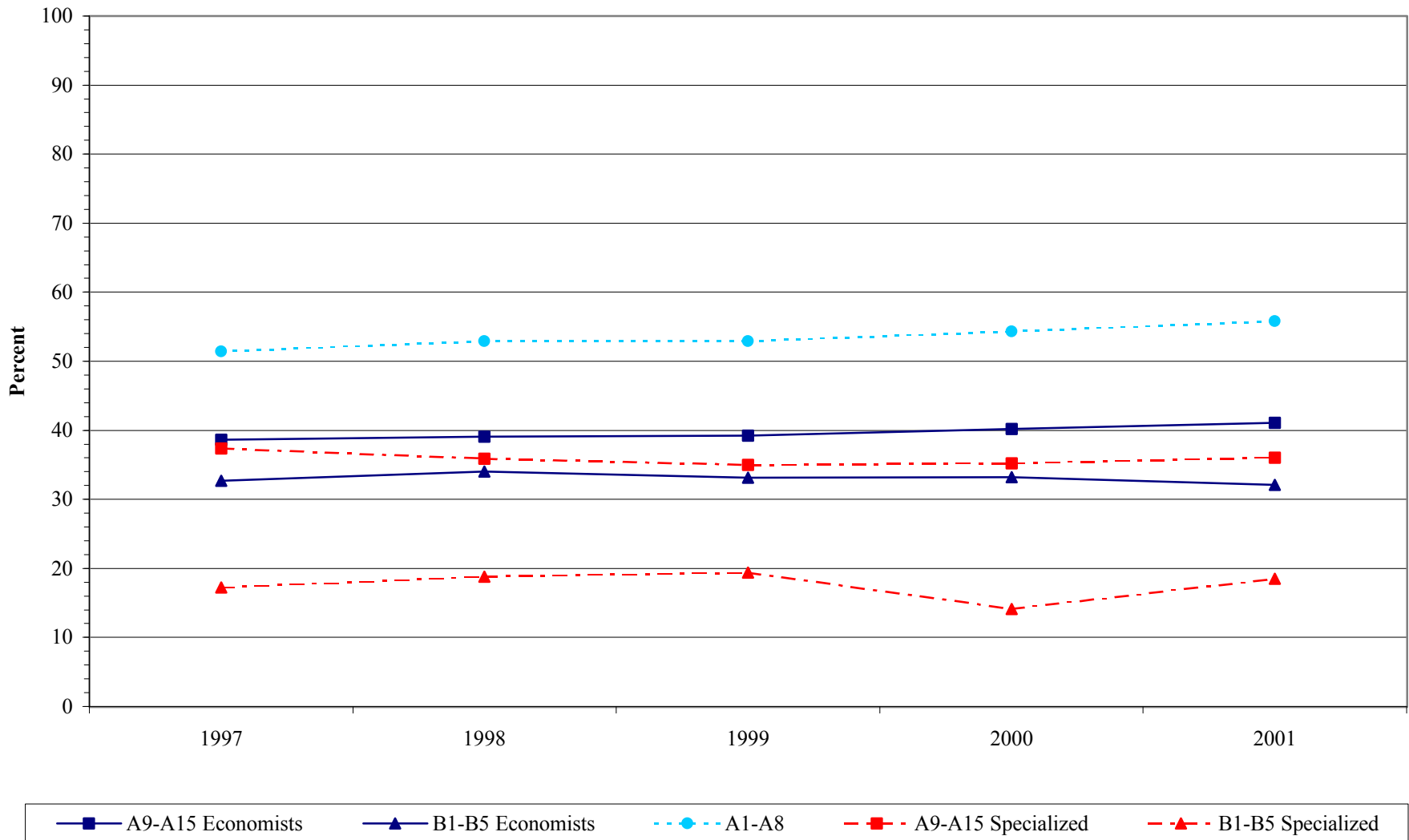


Figure 8. Staff by Region, Career Stream, and Grade Grouping

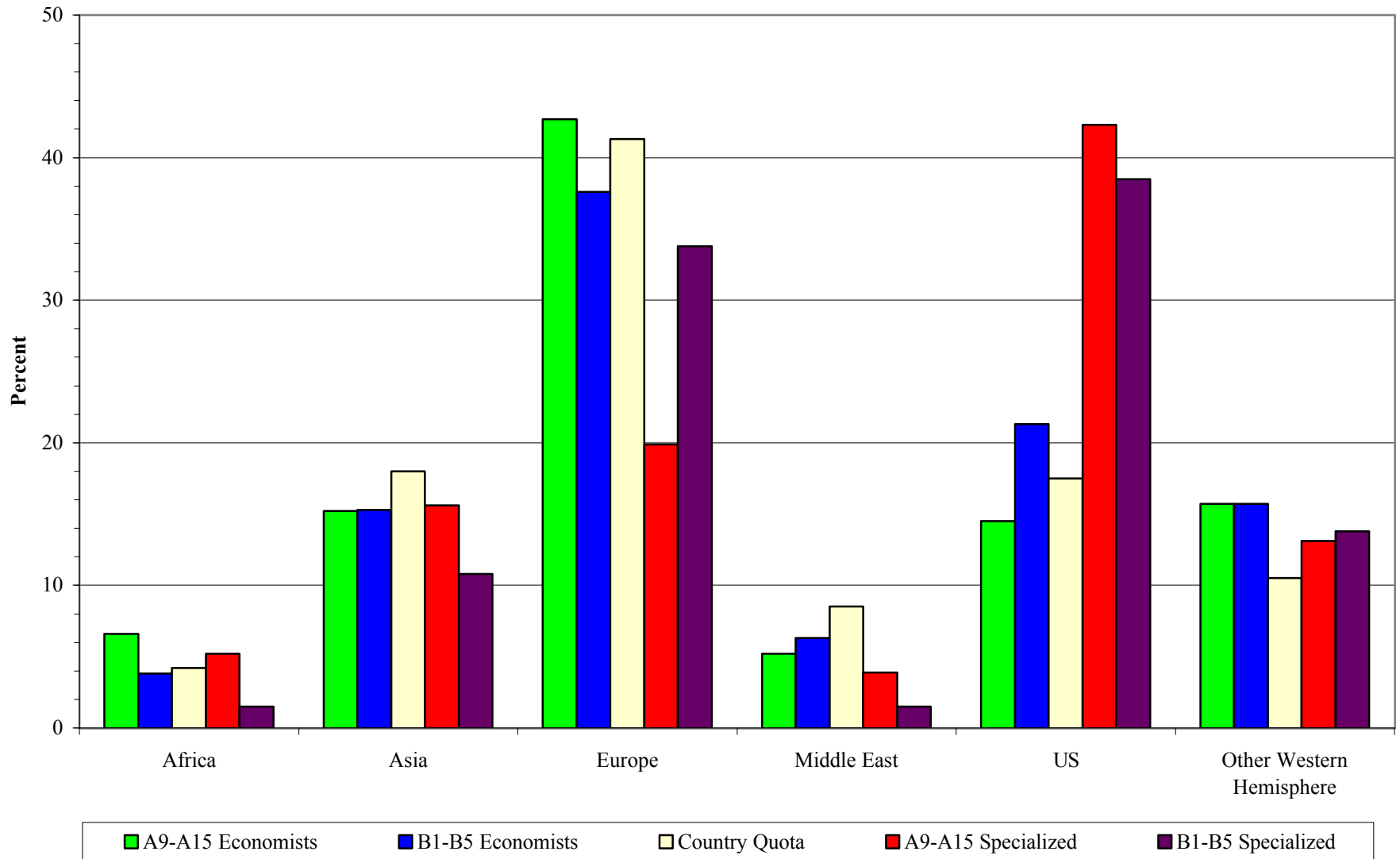


Figure 9. Staff by Gender, Career Stream, and Grade Grouping

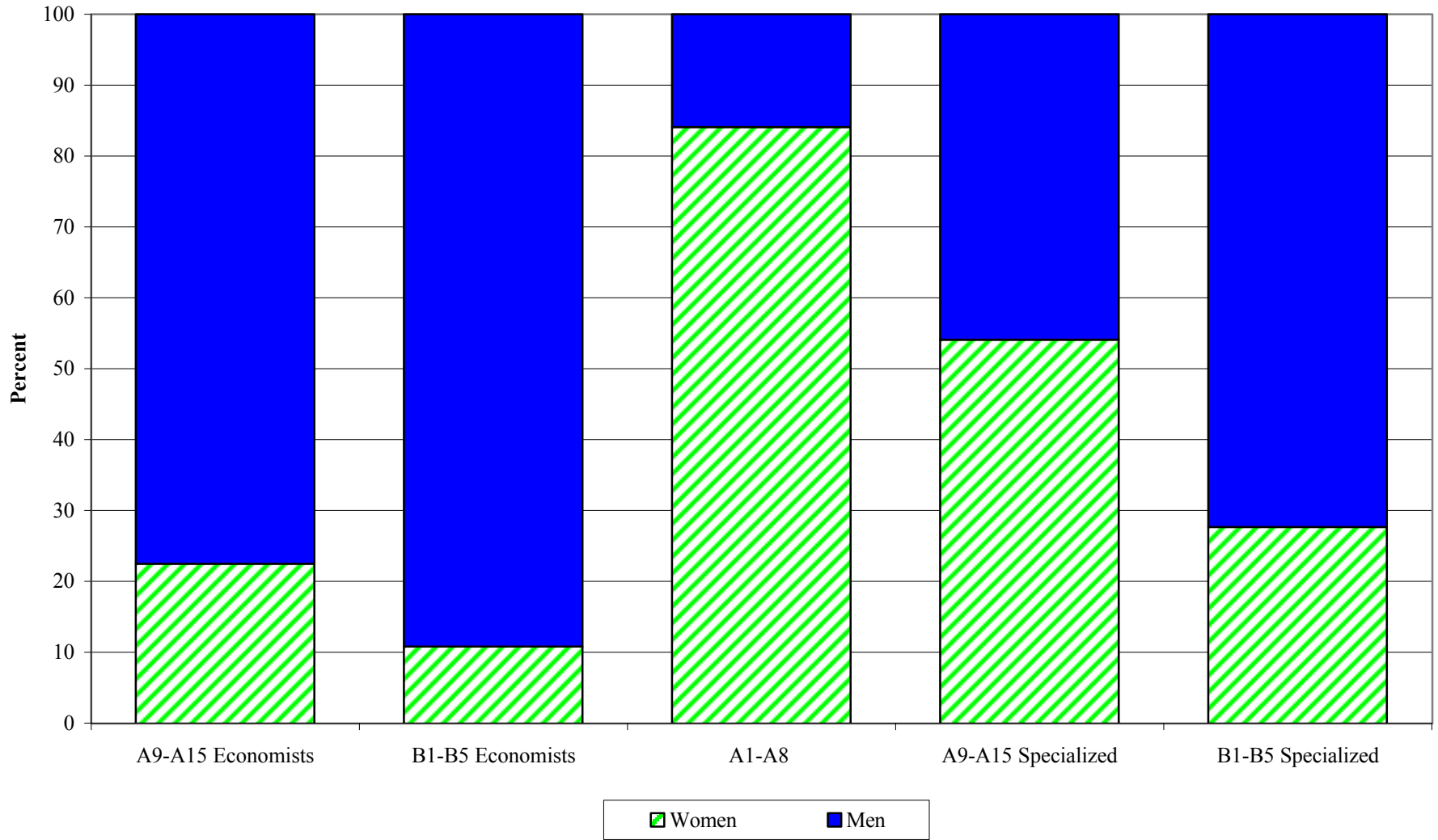


Figure 10. Share of Women by Career Stream and Grade Grouping, 1997-2001

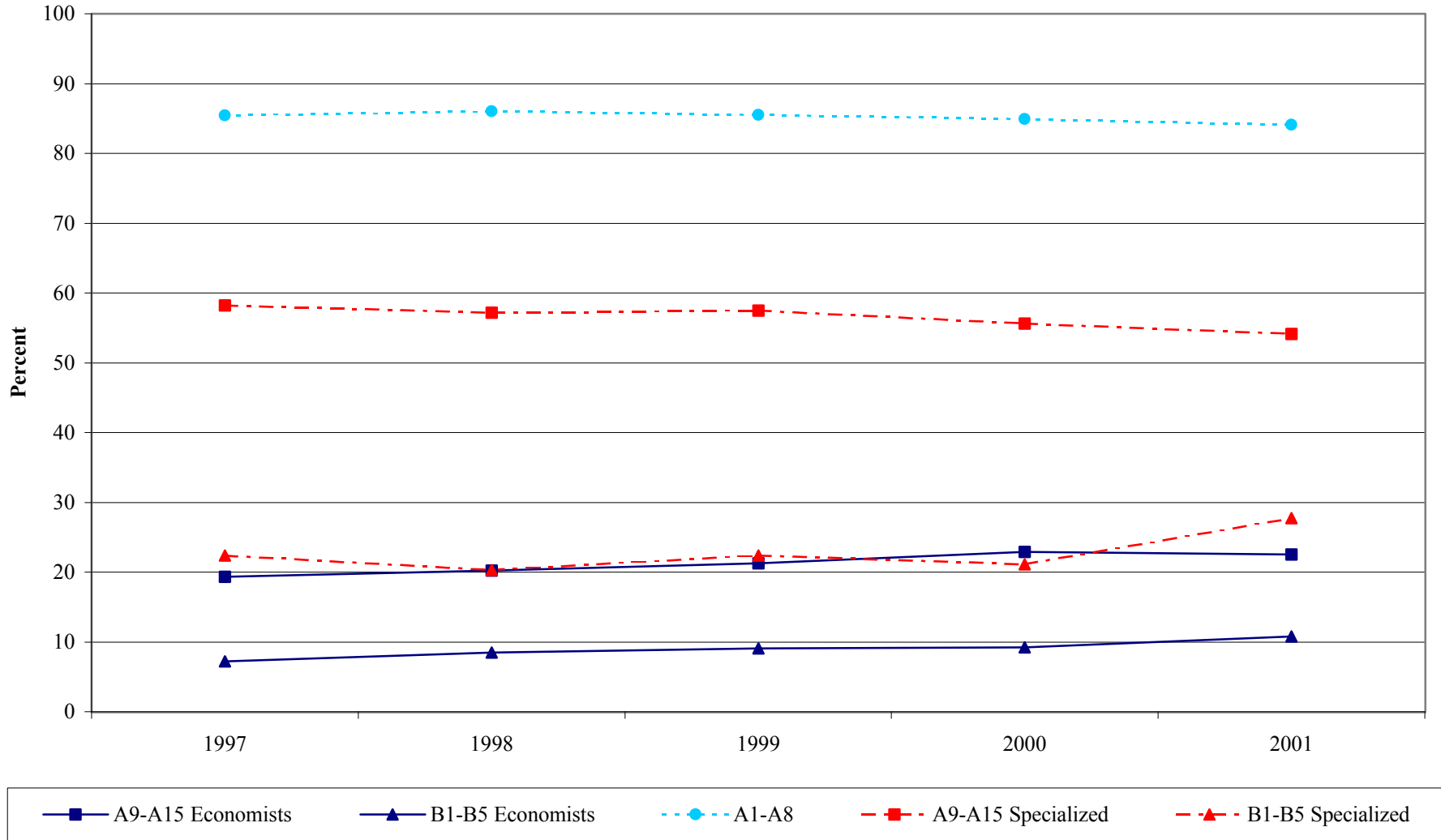
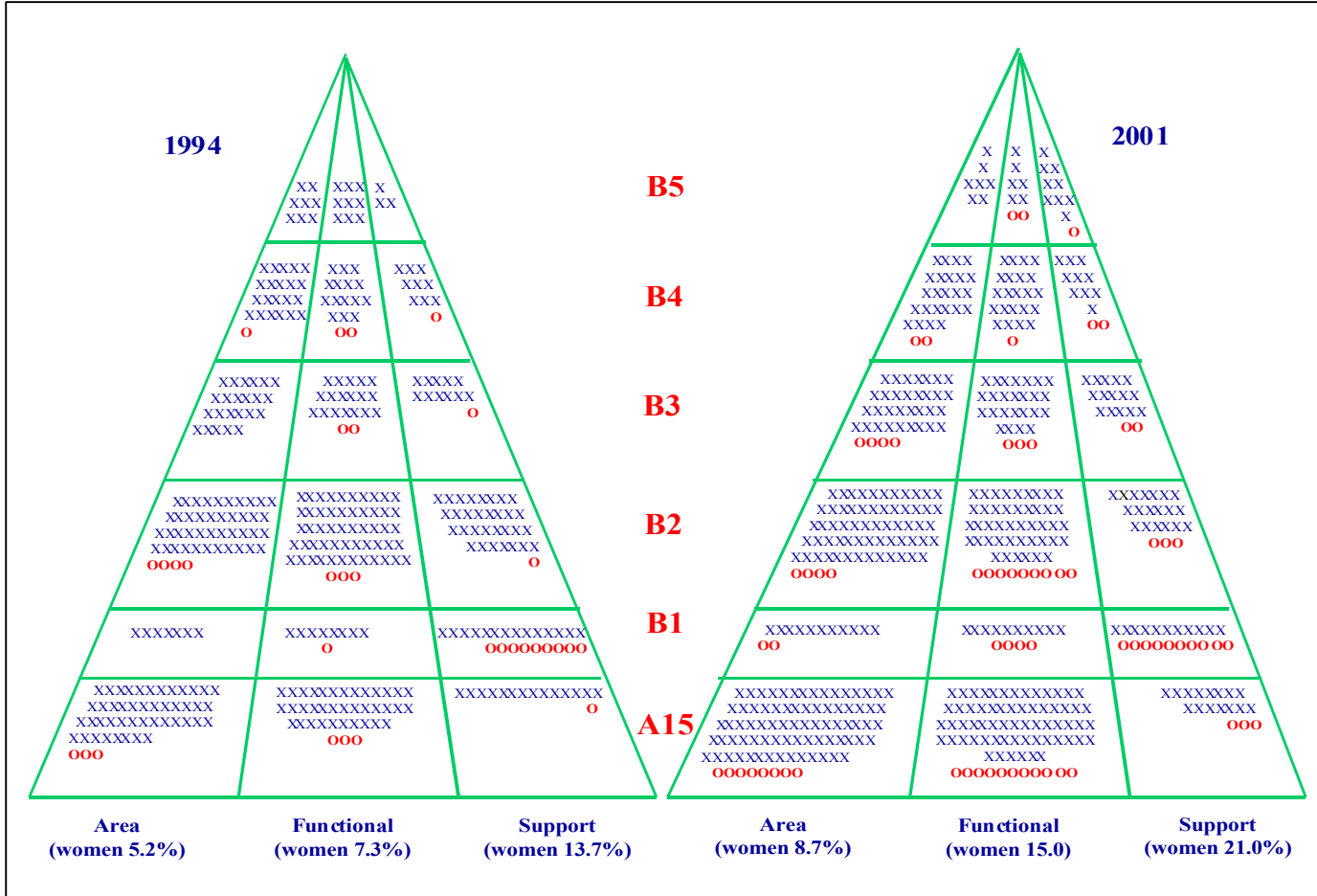


Figure 11. The Gender Pyramid: Women (O) and Men (X) in Grades A15-B5 in 1994 and 2001 by Department Type



**Figure 12. Recruitment of Developing Country Nationals
by Career Stream in Grade Group A9-A15, 1997-2001**

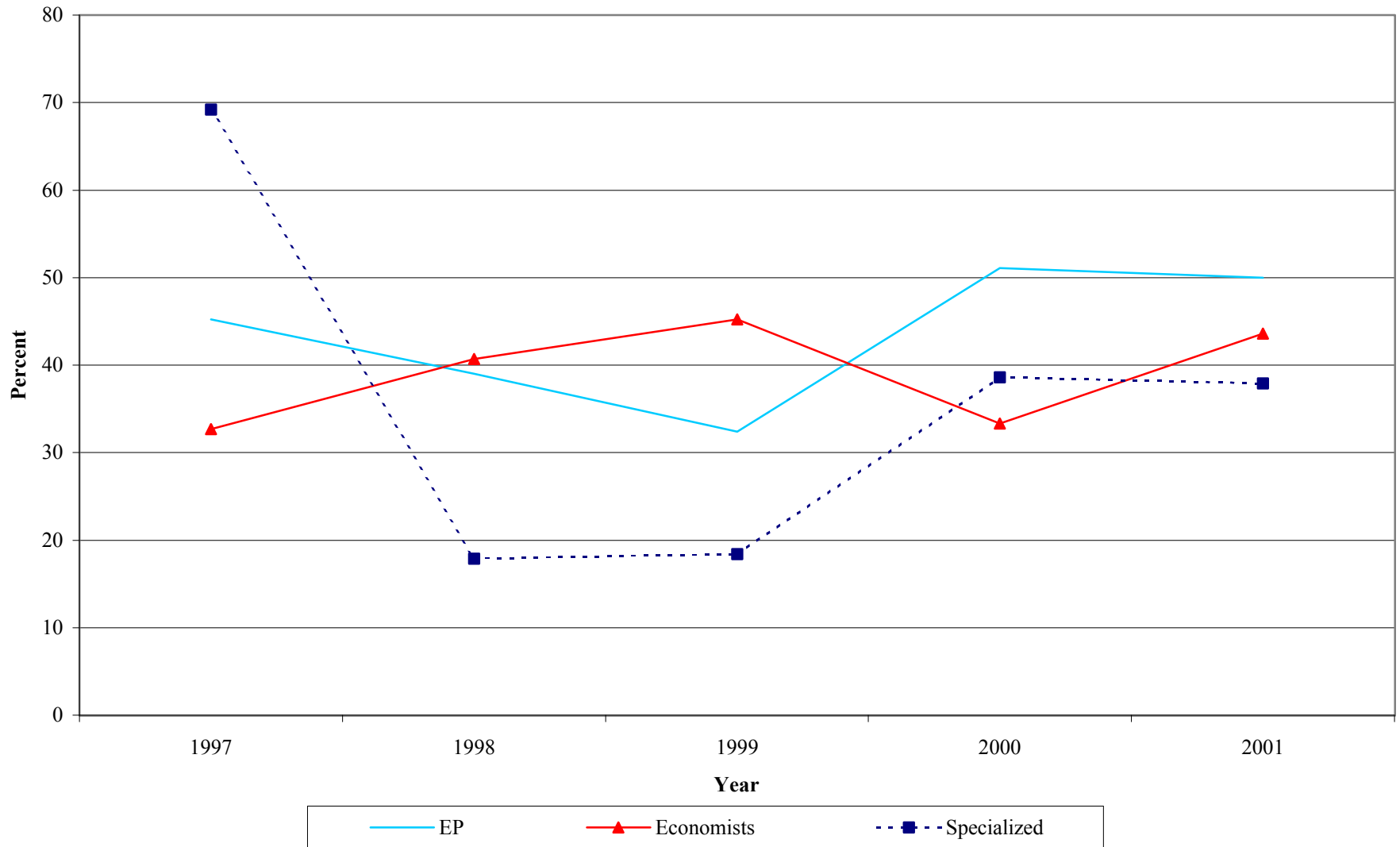


Figure 13. Recruitment of Women by Career Stream in Grade Group A9-A15, 1997-2001

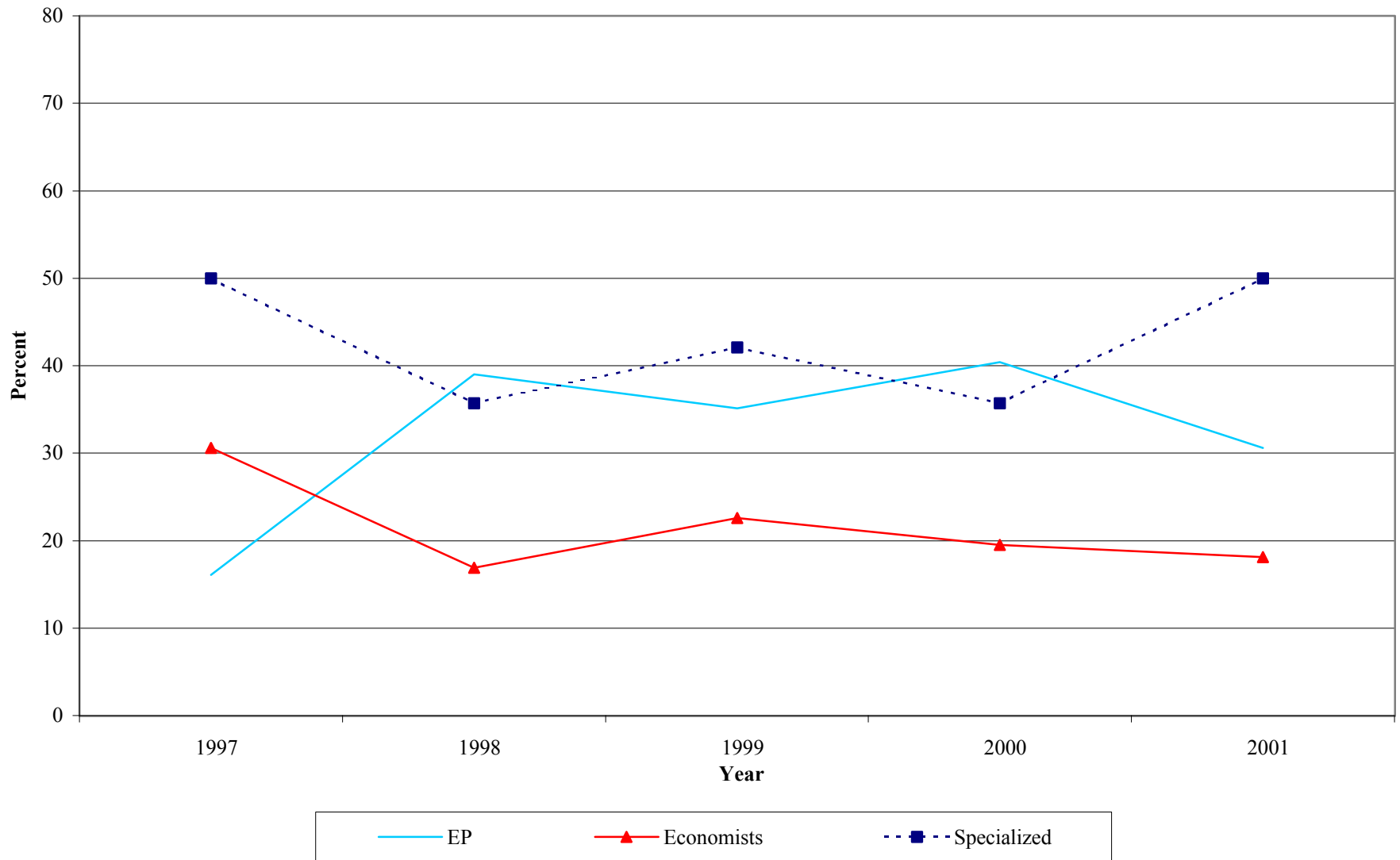


Figure 14. Mobility by Developing/Industrial Country and Grade Grouping, 1997-2001

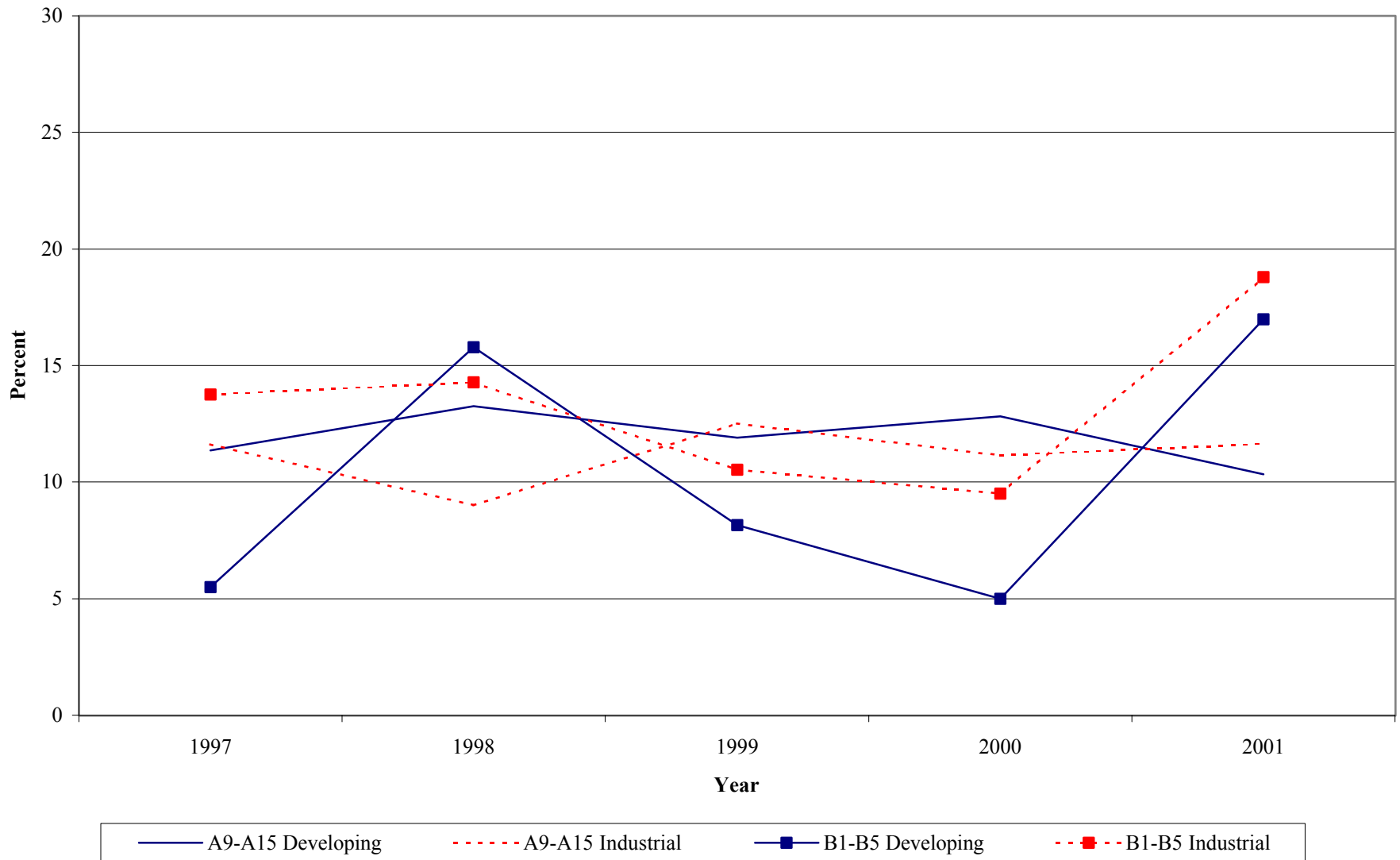
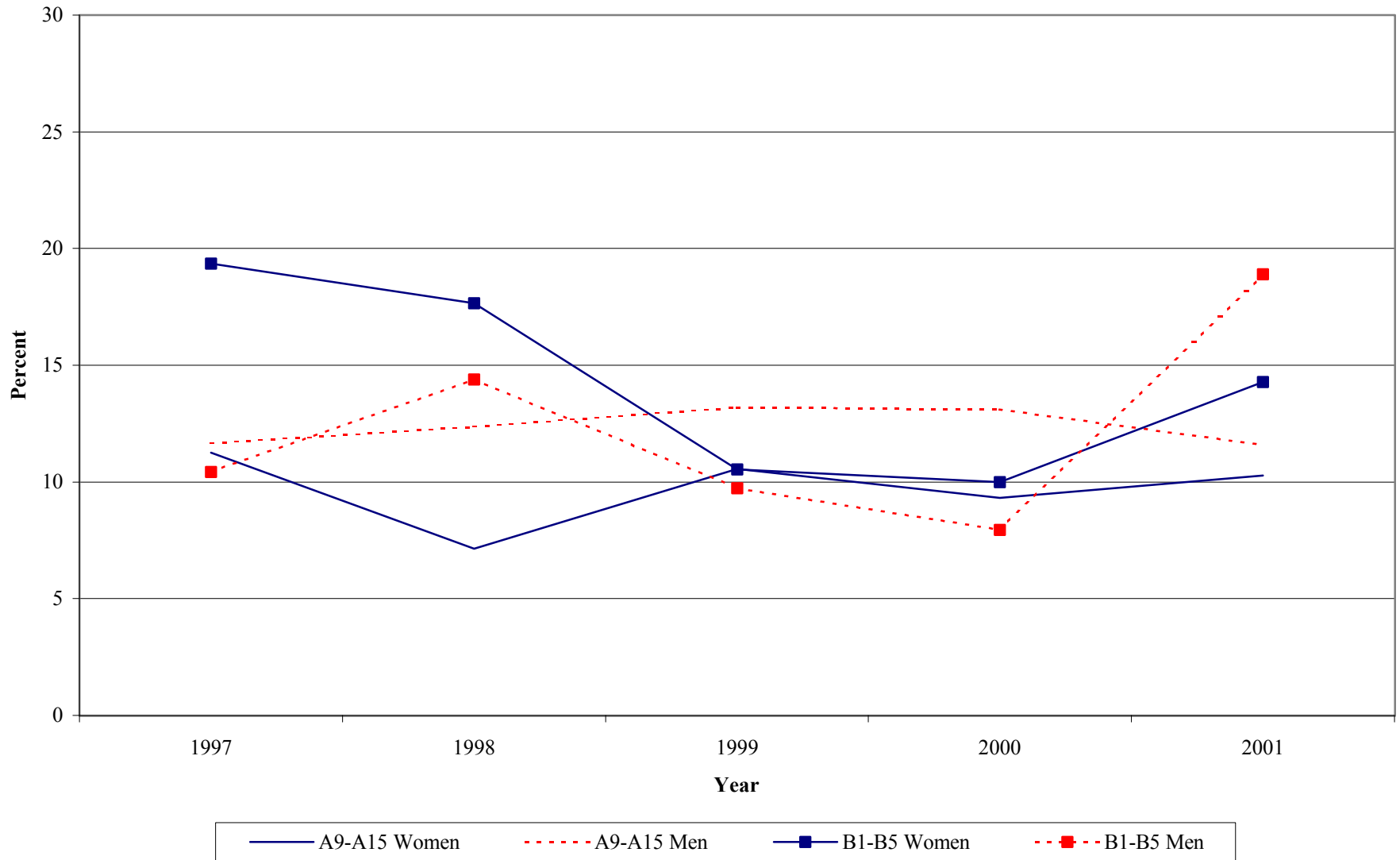
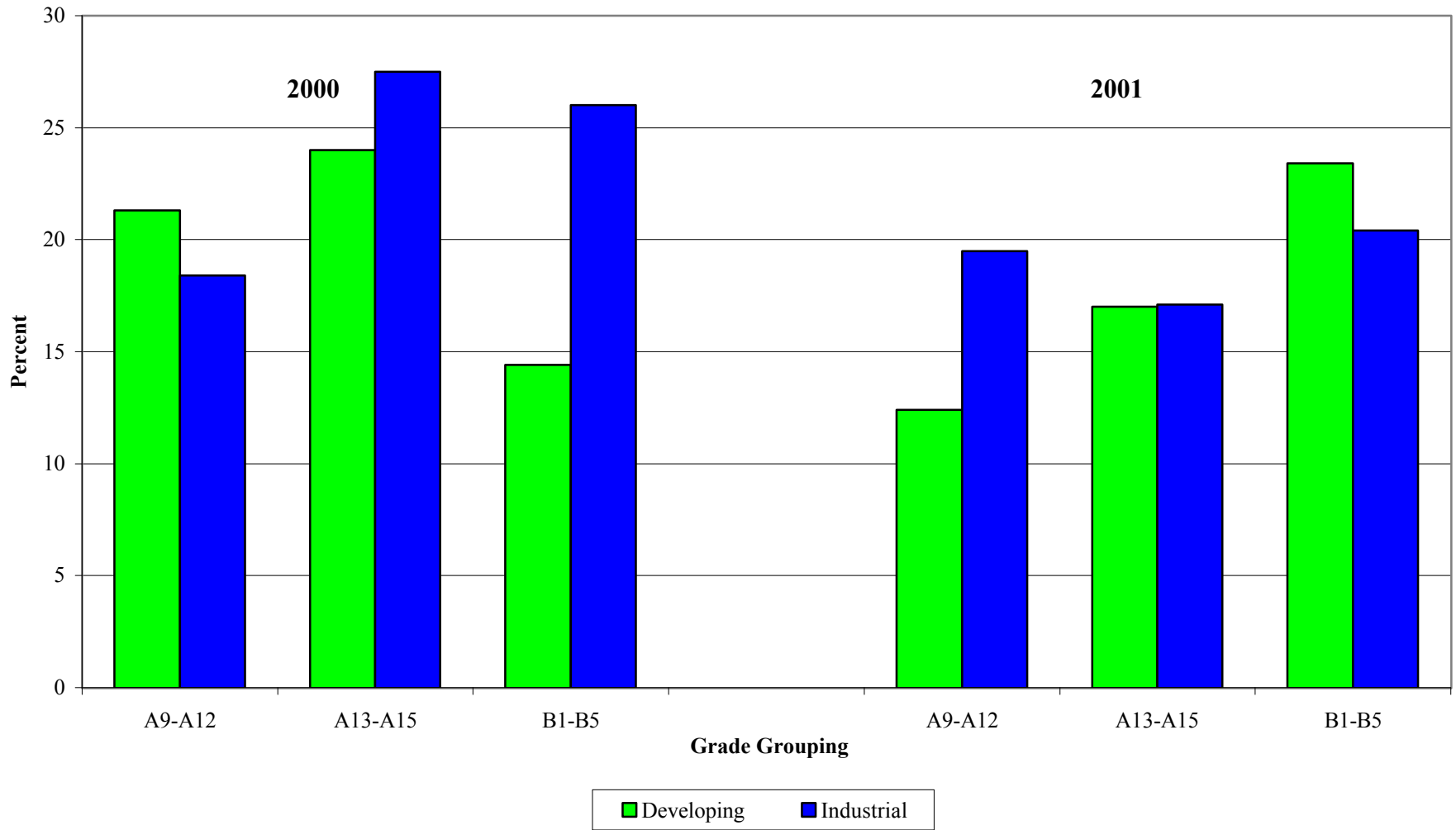


Figure 15. Mobility by Gender and Grade Grouping, 1997-2001

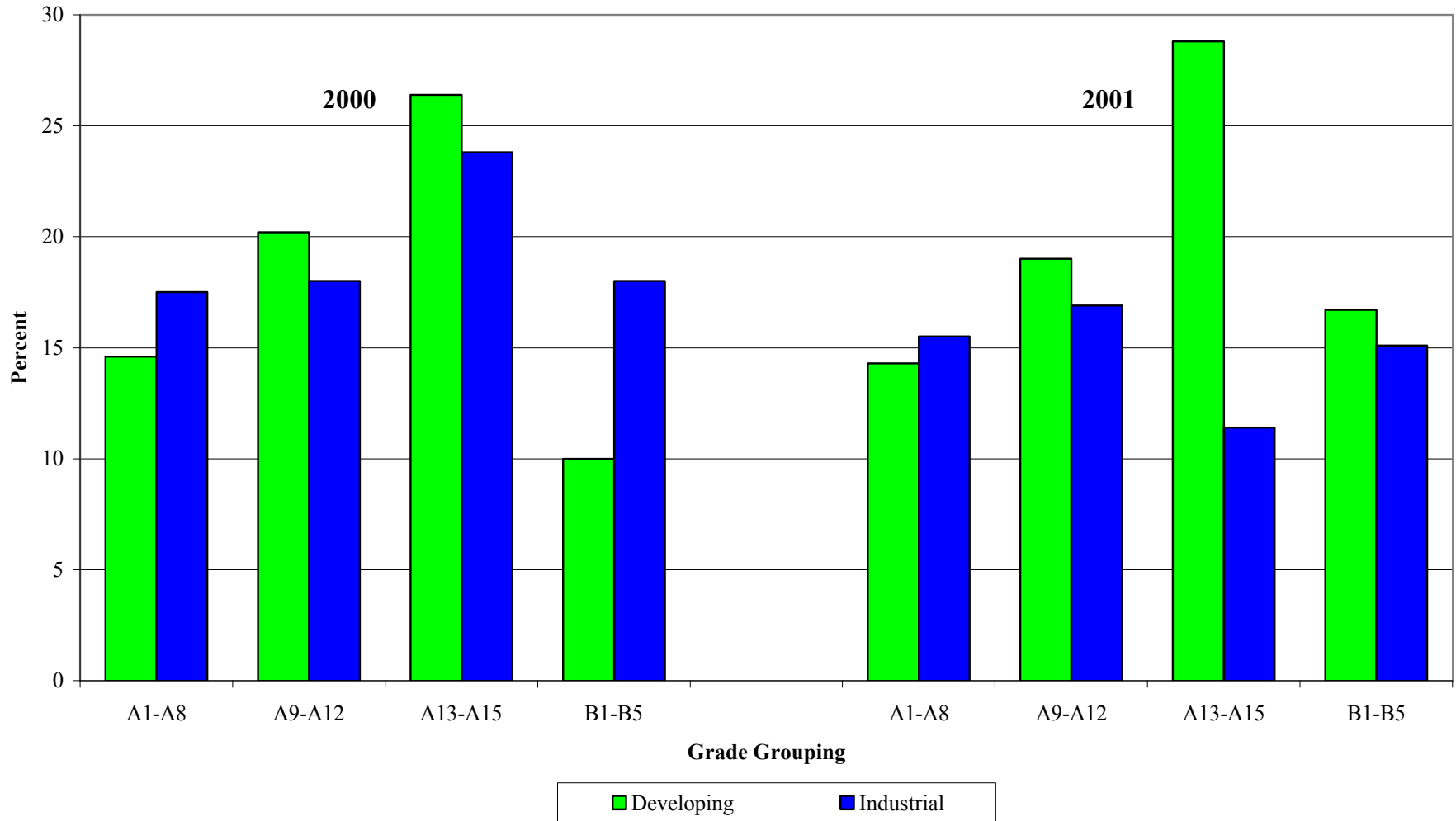


**Figure 16. Staff Promoted by Developing/Industrial Country and Grade Grouping:
Economists, 2000-2001 ^{1/}**



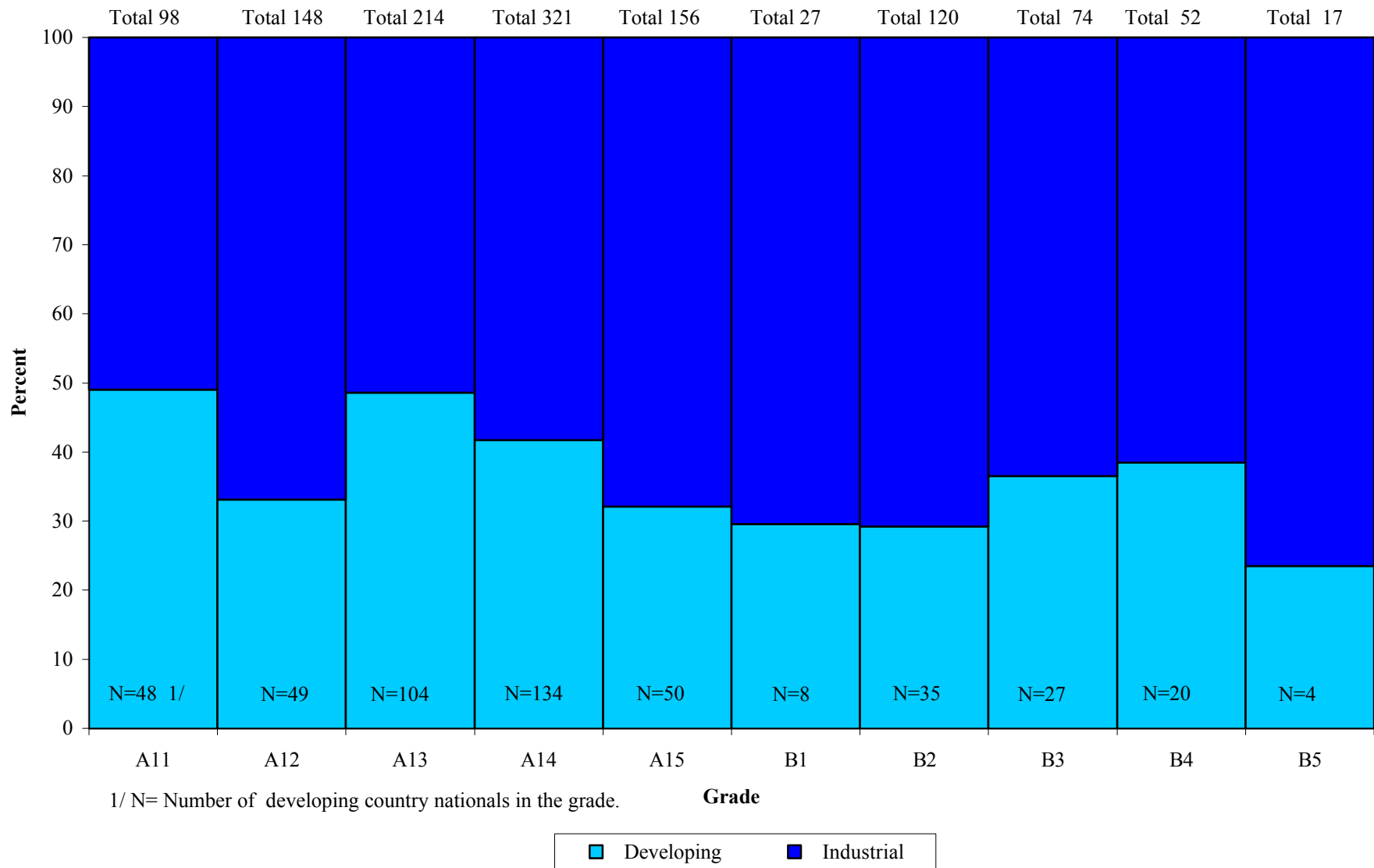
^{1/} Total is all developing/industrial country staff in the respective grade group.

Figure 17. Staff promoted by Developing/Industrial Country and Grade Grouping: Specialized Career Streams, 2000-2001



1/ Total is all developing/industrial country staff in the respective grade group.

Figure 18. Share of Developing and Industrial Country Nationals, Grades A11-B5: Economists



**Figure 19. Share of Developing and Industrial Country Nationals, Grades A11-B5:
Specialized Career Streams**

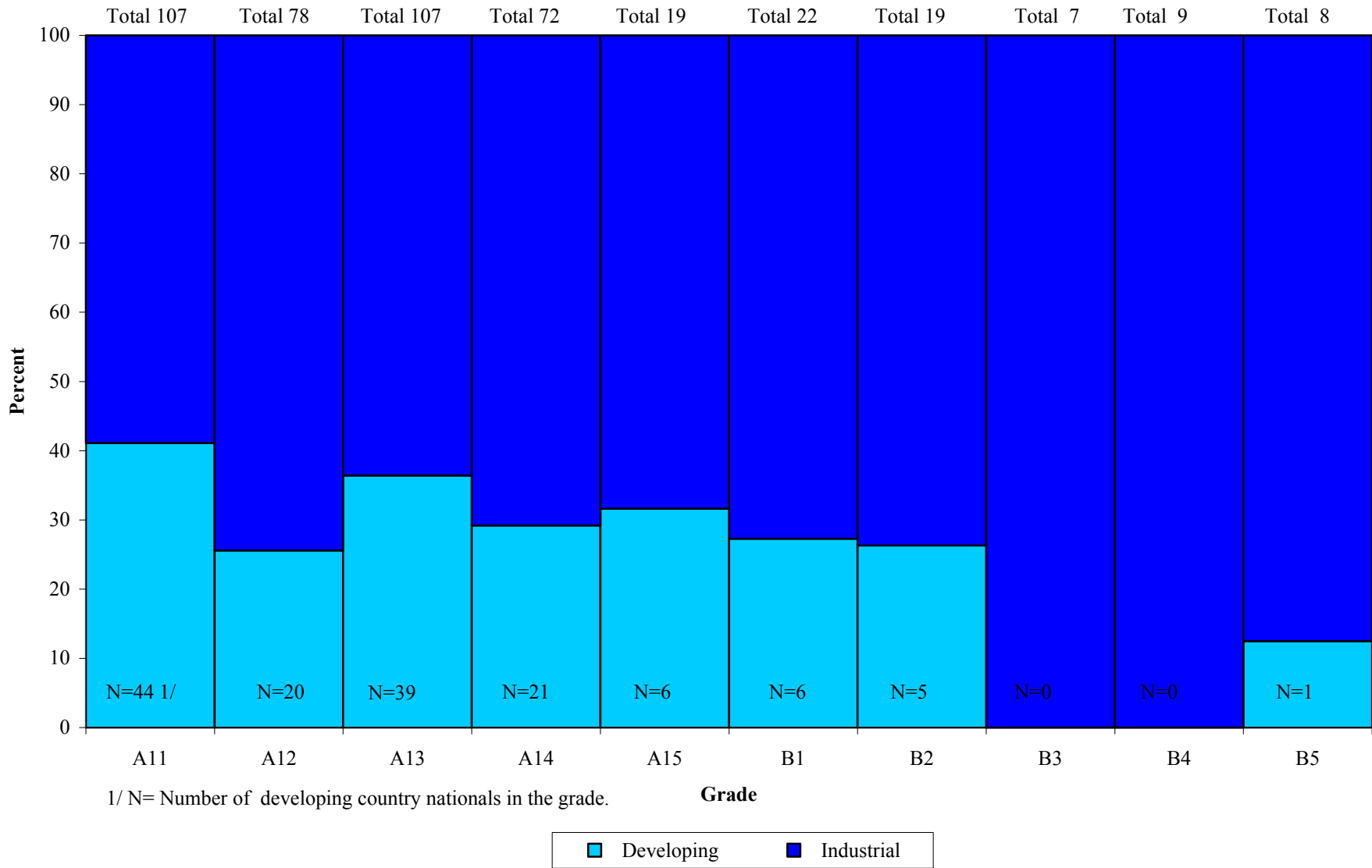


Figure 20. The Region Pyramid: African (O) and Middle Eastern (+) Staff in Grades A15-B5 in 1994 and 2001 by Department Type

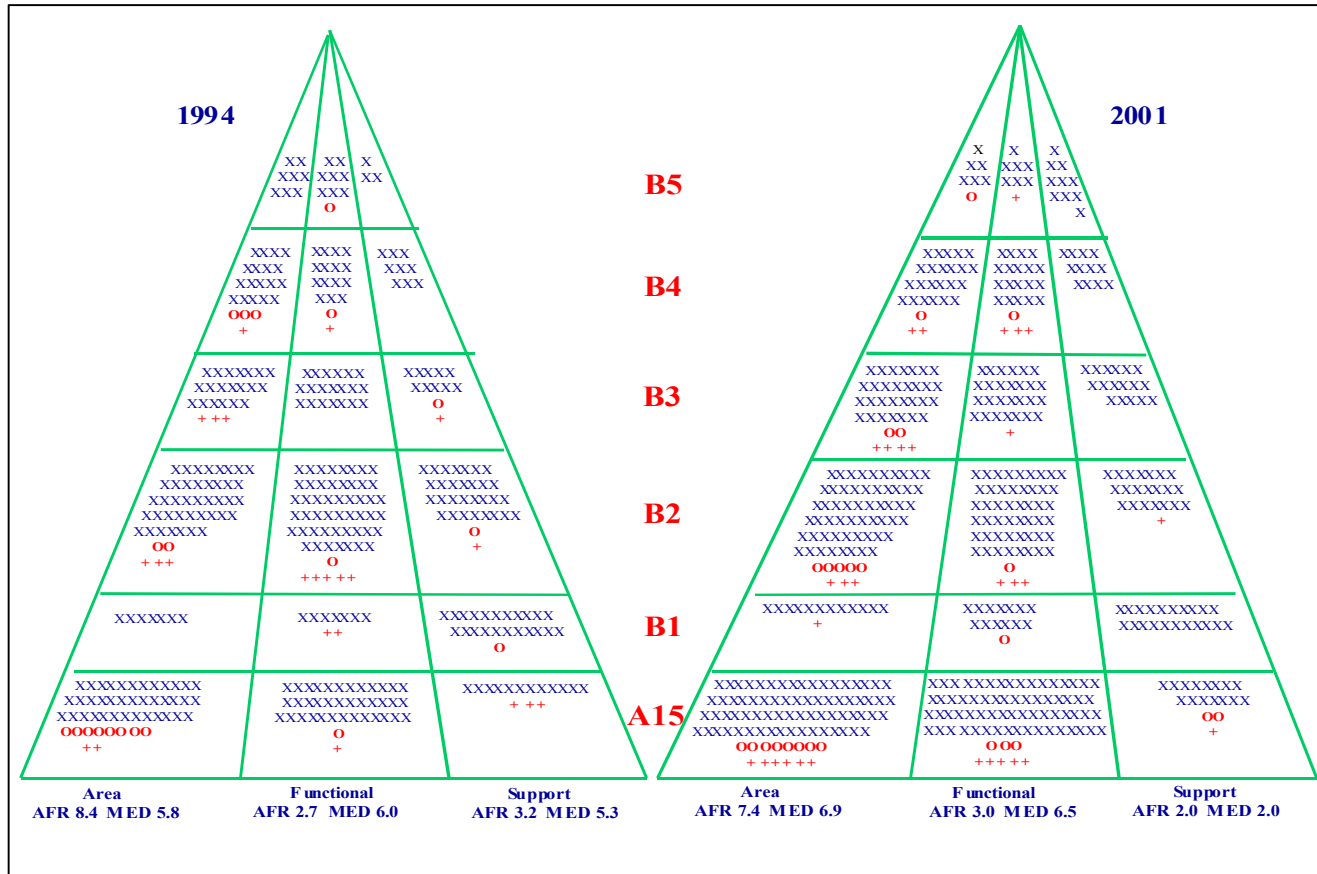
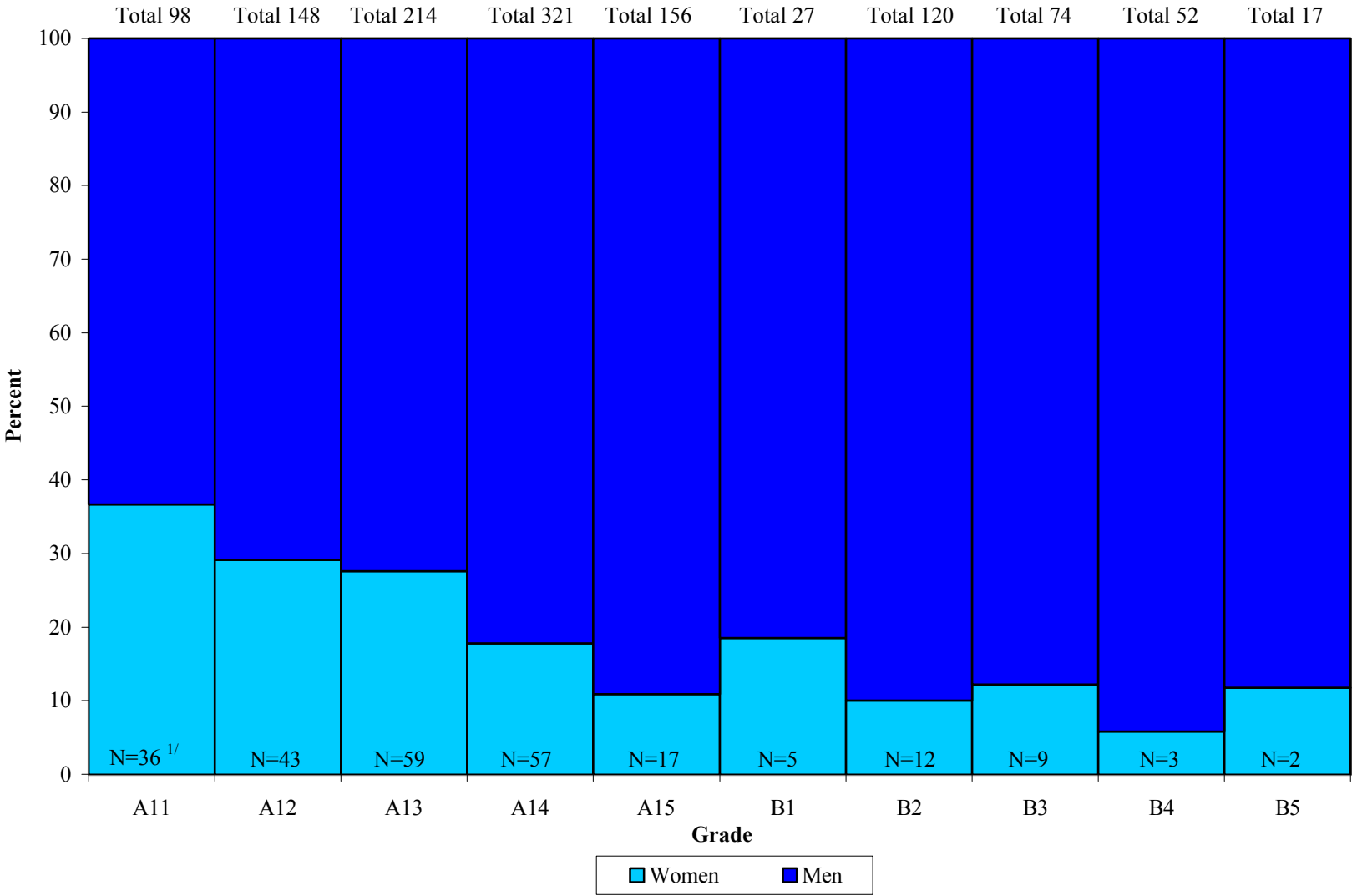
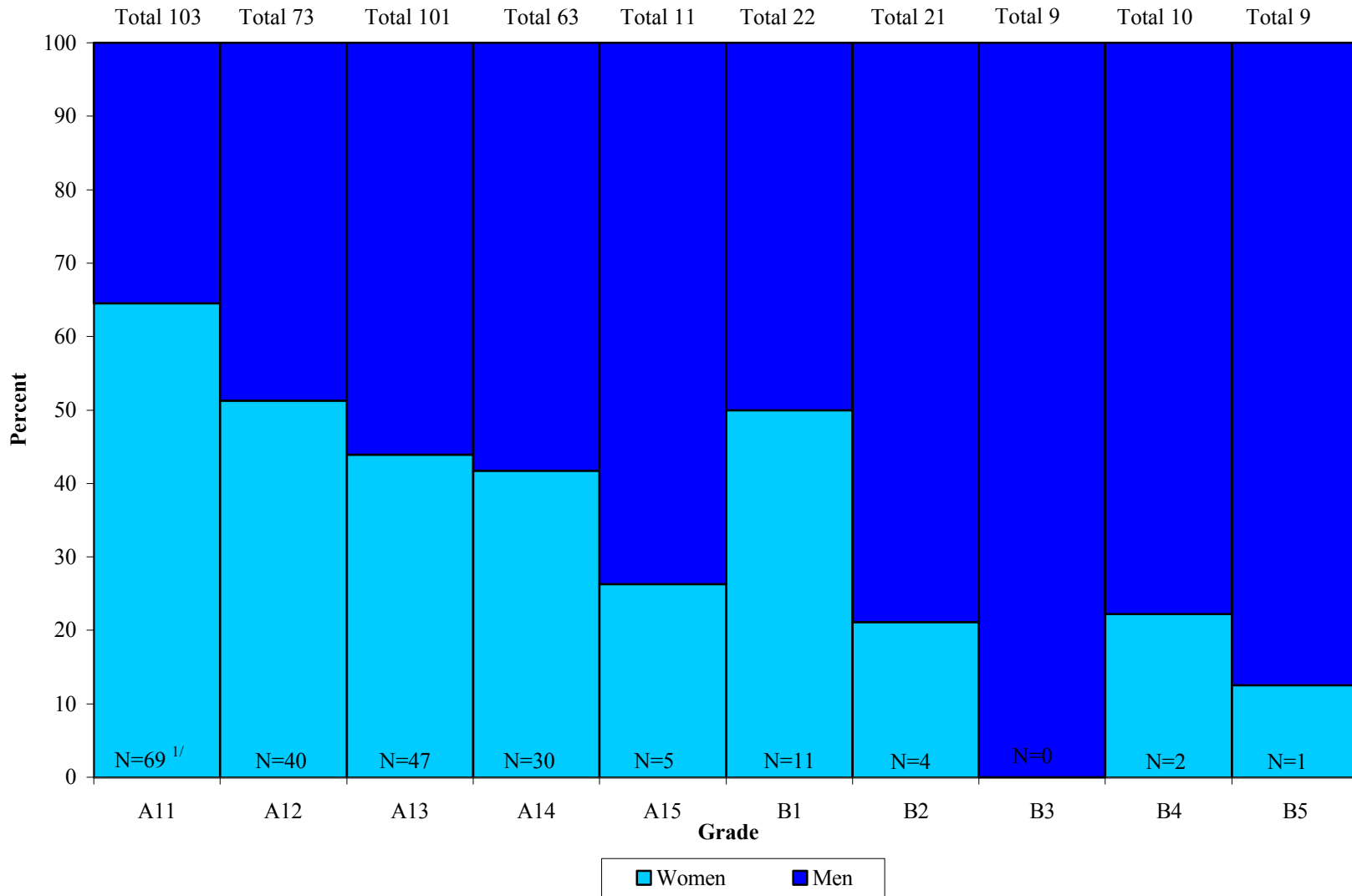


Figure 21. Share of Women and Men, Grades A11-B5: Economists



1/ N= Number of women in the grade.

Figure 22. Share of Women and Men, Grades A11-B5: Specialized Career Streams



1/ N= Number of women in the grade.

Figure 1. Share of Developing Country Nationals by Area Departments, 1996-2001 (in percent)

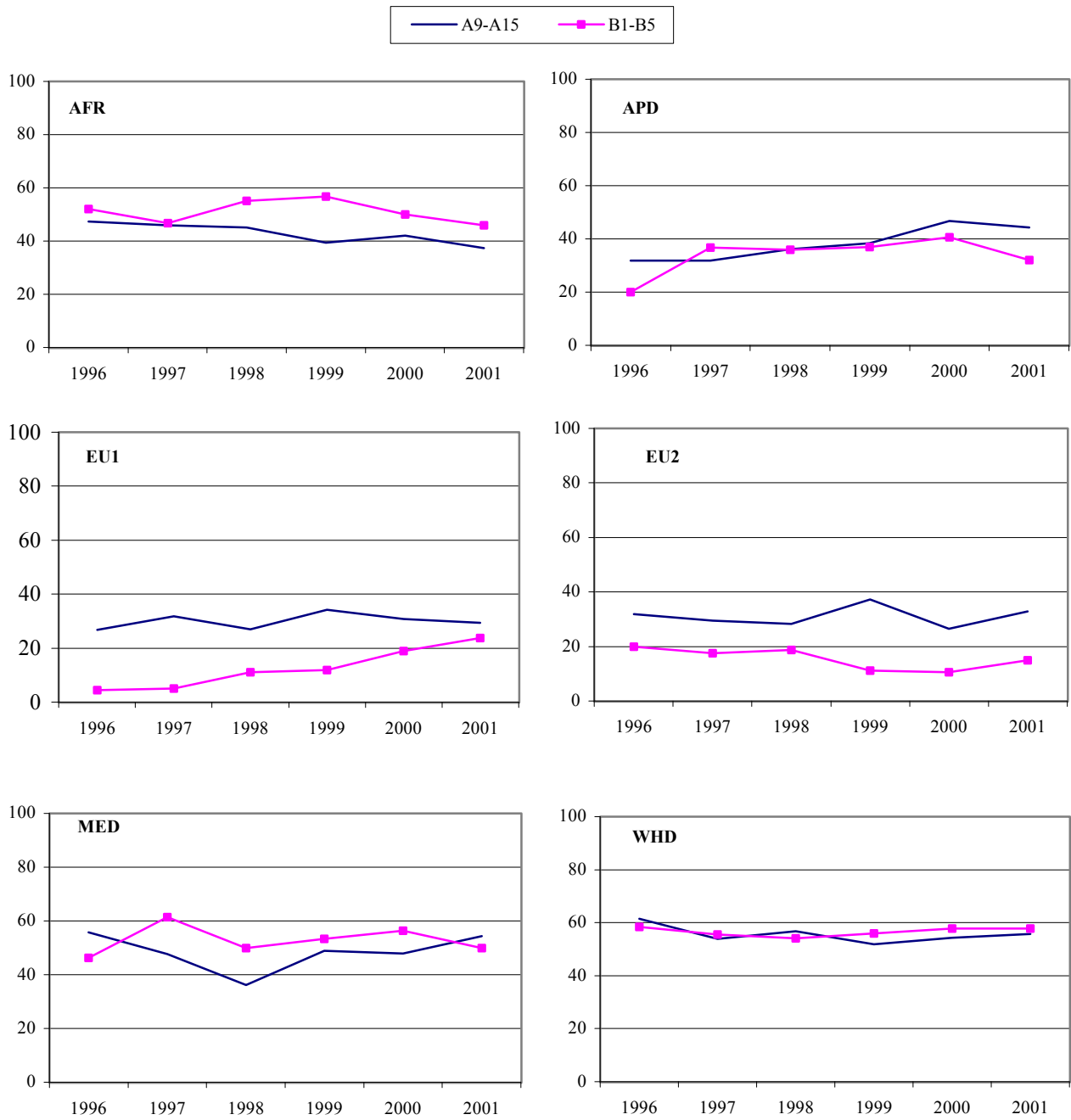


Figure 1 (contd). Share of Developing Country Nationals by Functional Departments, 1996-2001 (in percent)



1/ ICM was established in 2001. Developing country nationals in 2001 made up 45.5% in grade group A9-A15 and 12.5% in B1-B5.

Figure 1 (contd). Share of Developing Country Nationals by Support Departments, 1996-2001 (in percent)

— A9-A15 ■ B1-B5

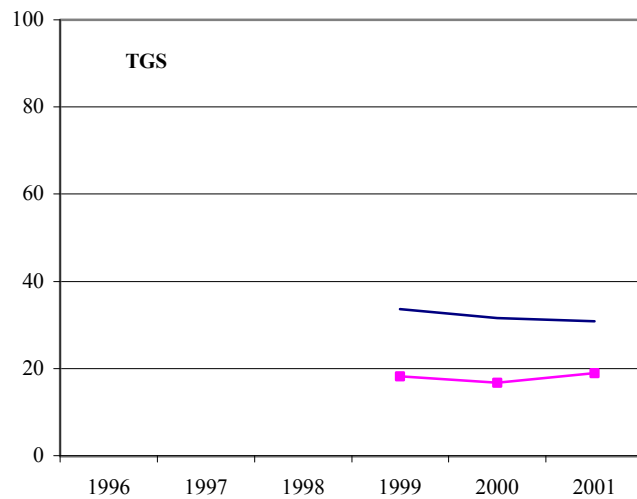
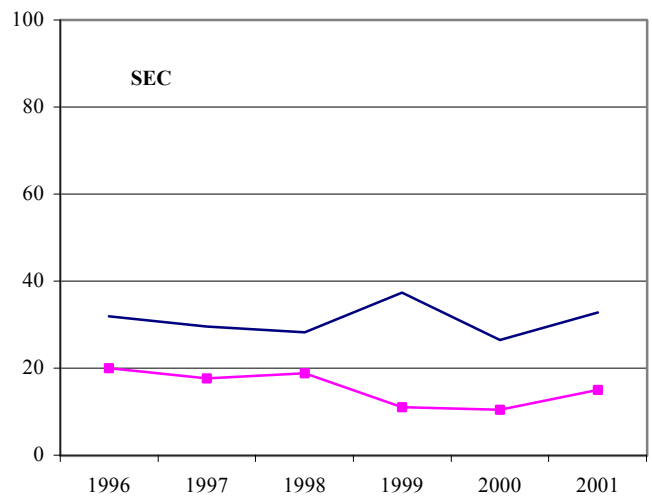
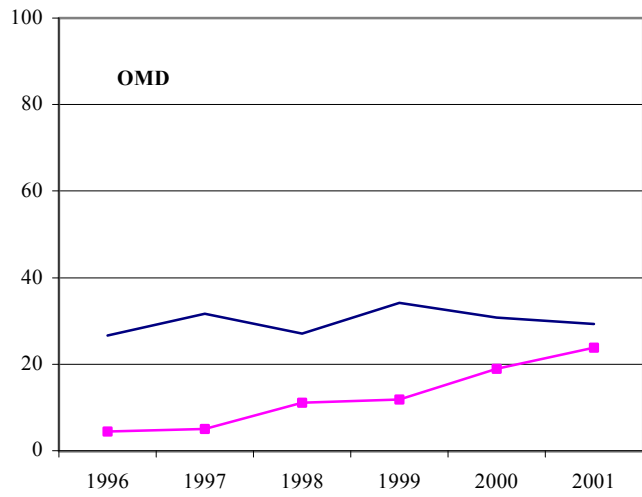
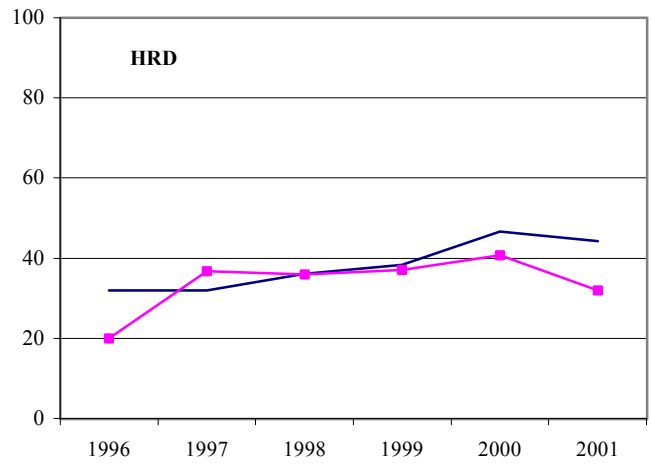
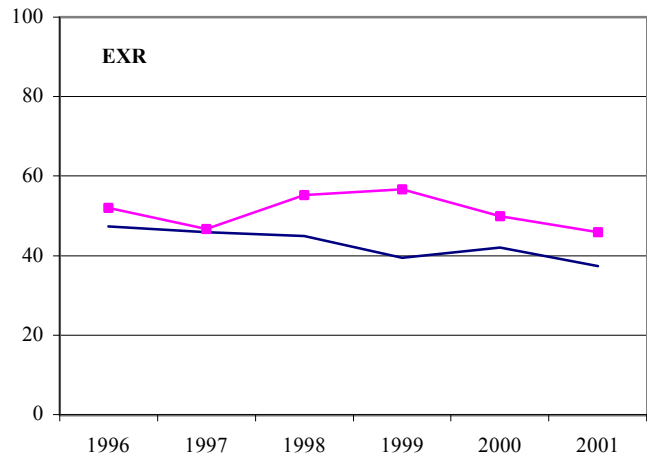


Figure 2. Share of Women by Area Departments, 1996-2001 (in percent)

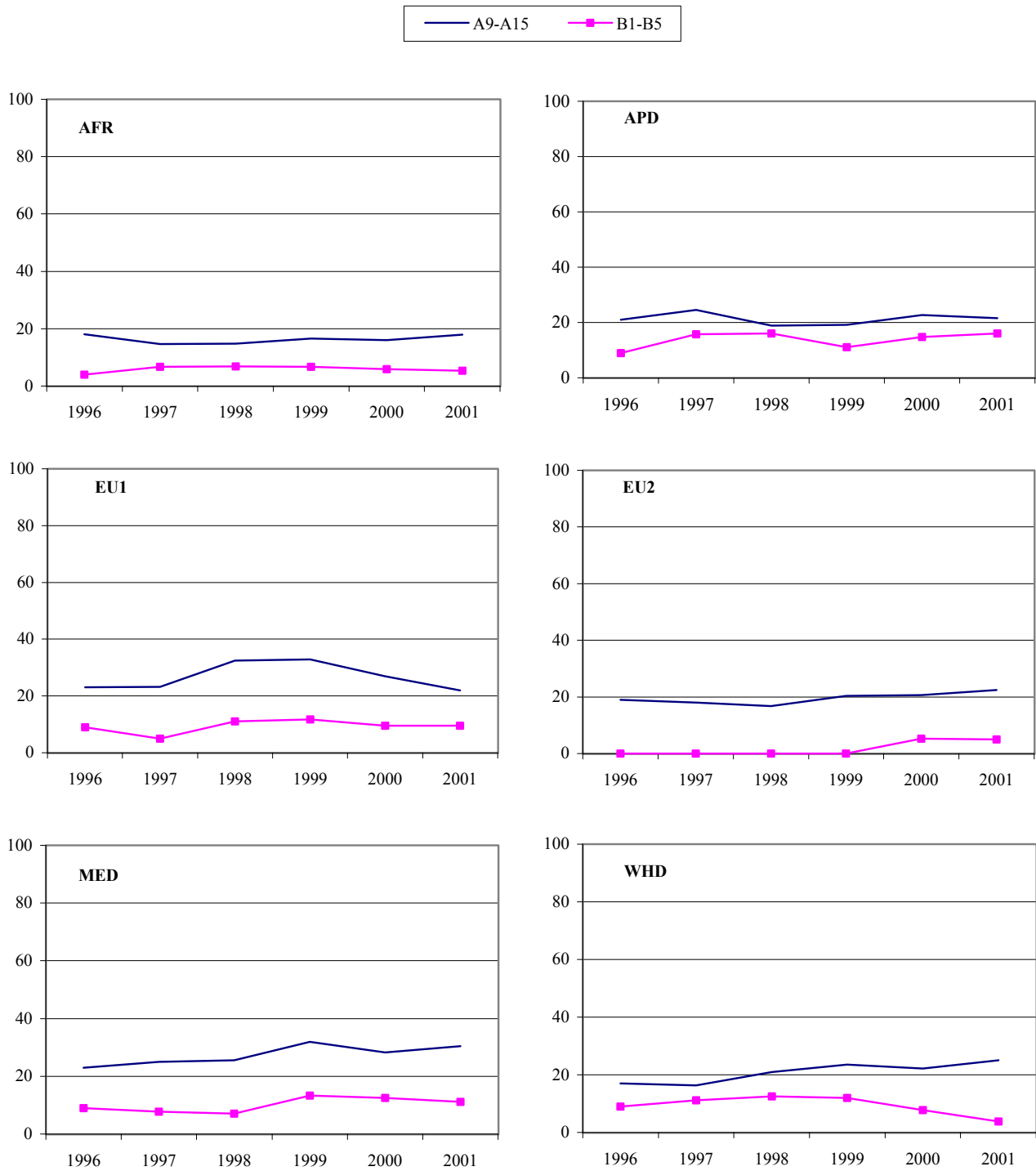
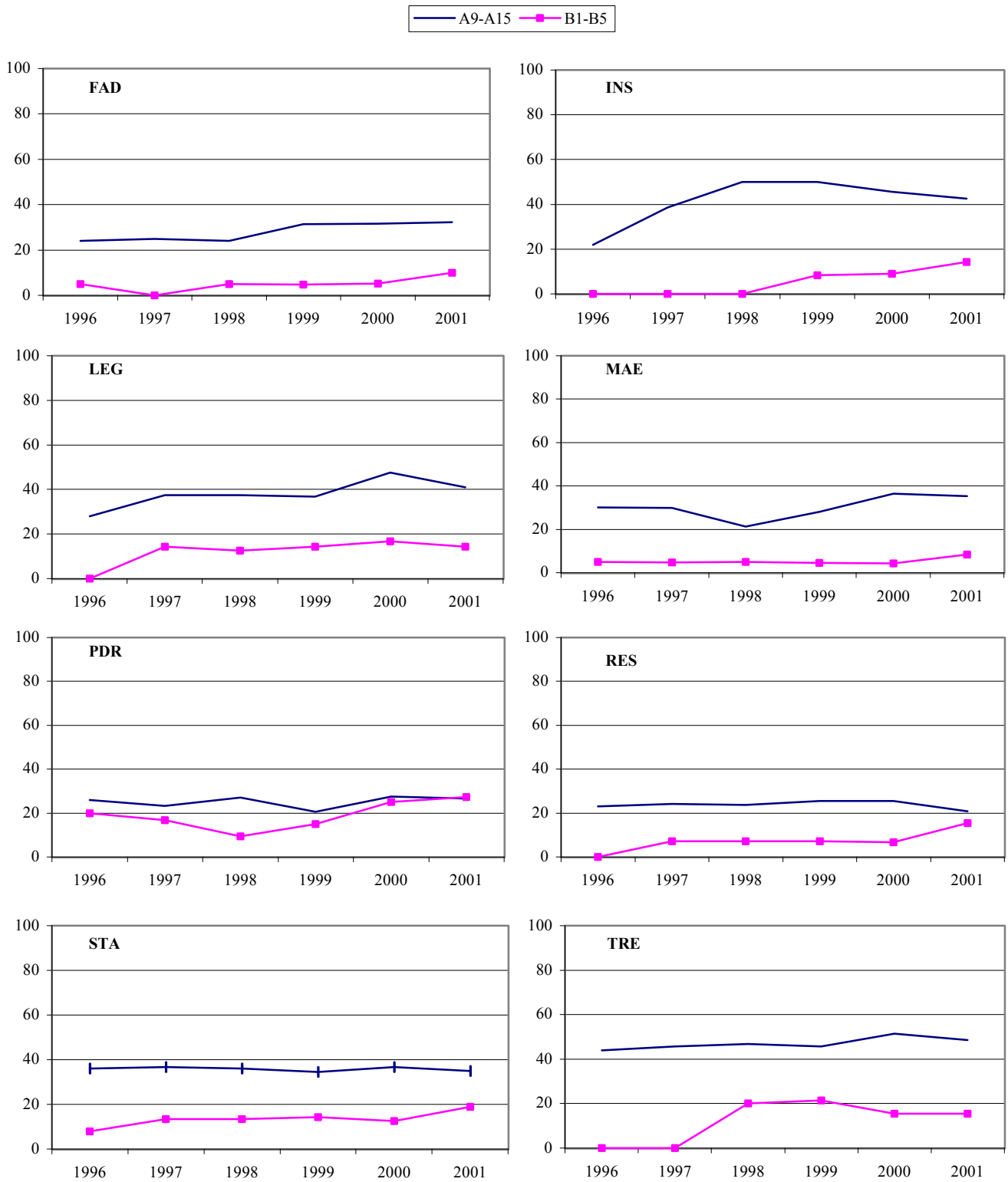


Figure 2 (contd). Share of Women by Functional Departments, 1996-2001 (in percent)



1/ ICM was established in 2001. Women in 2001 made up 27.3% in grade group A9-A15 and 0% in B1-B5.

Figure 2. Share of Women by Support Departments, 1996-2001 (in percent)

