

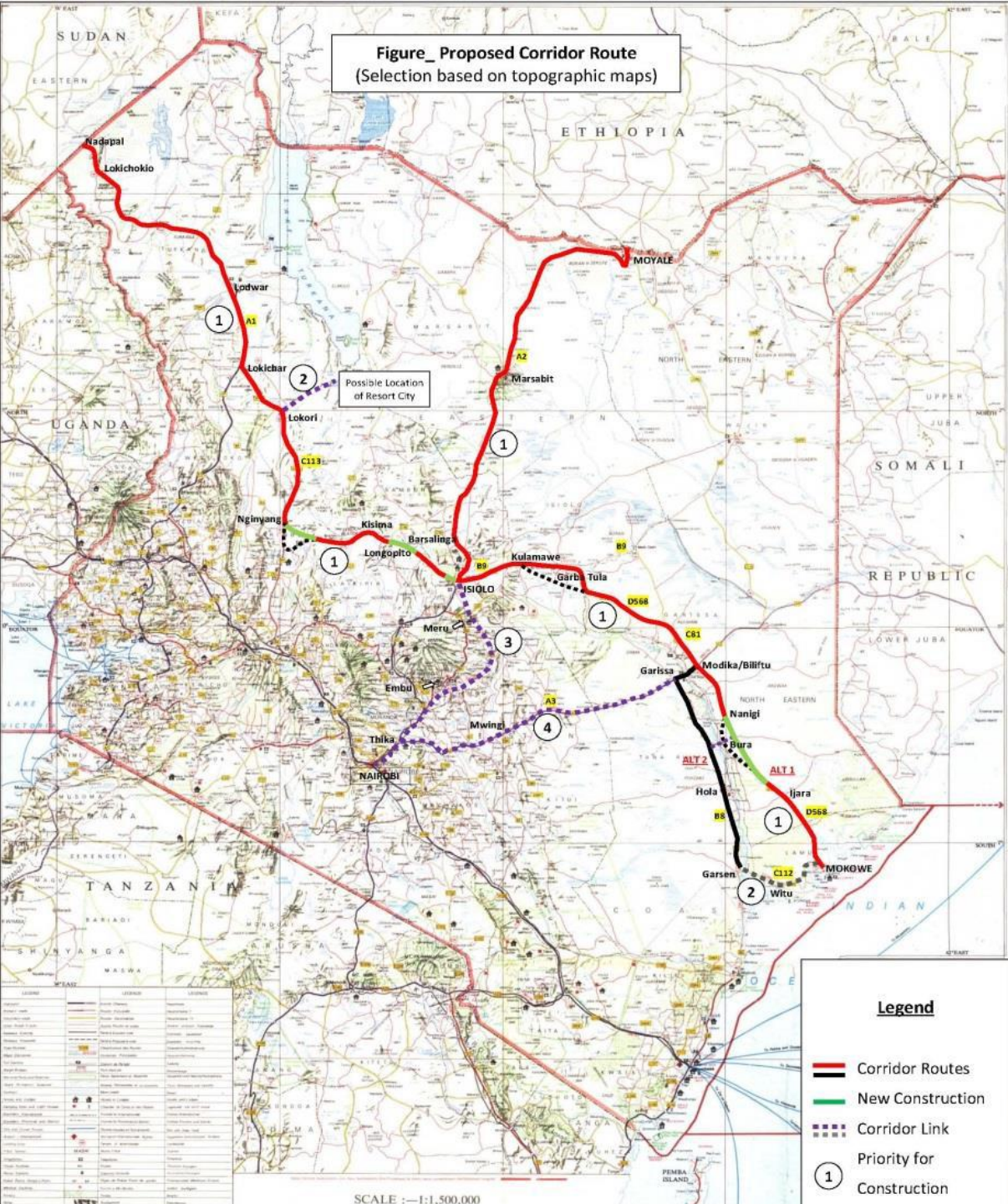
KENYA'S ECONOMIC SUCCESSES, PROSPECTS AND CHALLENGES: *CLOSING THE INFRASTRUCTURE GAP*

Eng. M.S.M KAMAU, CBS
CABINET SECRETARY



MINISTRY OF TRANSPORT
AND INFRASTRUCTURE

Figure_ Proposed Corridor Route
(Selection based on topographic maps)



Legend

- Corridor Routes
- New Construction
- - - Corridor Link
- ① Priority for Construction

1.0 BACKGROUND

Infrastructure-Miundomsingi

Infrastructure gap in Kenya is large. Very large .

Some of the contributory factors include:

- ❑ Finance
- ❑ Technology/skills
- ❑ Expensive inputs
- ❑ Land(costs)/encroachment- grabbing
- ❑ Institutional / regulatory framework
- ❑ Litigation rapid deterioration / inadequate maintenance-
vandalism

2.0 SITUATIONAL ANALYSIS

Brief overview of roads, rail, airports , seaports, oil pipeline, energy, and telecommunications.

- **Roads**

14,000kms /64,000 kms/ 160,000kms

Sudan link/Ethiopia link/Somalia links via Mandera - Liboi

Uganda link via Suam

Tanzania link via Taveta

Congested Northern Corridor (> 2200 >55km)

Rail

Metre gauge(1890s).

Msa- Kla line grossly underperforming < 4%

Many lost lines- Taveta, Nanyuki, Nyahururu, Rongai

Airports

JKIA Terminal - 1978 2.5m vs >8m KQ

MIA , Eld, Ksm, Wilson, Loki

Seaports

Msa – congestion, CFSs- numerous complaints – UG/Rwanda

Berth 19 & 2nd CT (2 decades)

Oil pipeline/storage

Msa – Nrb – Eld – Ksm (inadequate)

KOT - 21 days DT

Energy

<1700 MW– poor transmission

ICT

Sterling performance

3.0 OPPORTUNITIES

Very large gap implies huge opportunities.

Discovery of oil , water, minerals , growing population will contribute to the expansion and reduction of infrastructure - important that gap reduction must exceed expansion.

Roads – jubilee Manifesto 13,00kms in 5 yrs.

Anticipated growth in the region -

Opportunities for tolling : PPPs & conventional contracts

Rail

Regional Agreement for new SGR Msa- Nrb- Kla- Kgl line and rehab of existing metre gauge

RVR Msa – Nrb- Kla < 1m & projected to 5m

Nrb Met 20kms – 106kms

Similar metros in Msa & Ksm

Airports

JKIA – Greenfield terminal & 2nd runway

Opening up of T4

KQ - Mawingu

Seaports

Msa 2nd CT – 100 Ha- 750,000 TEUs

Dongo Kundu SEZ & logistics ctr – by-pass

Ksm port re-opening Lake Victoria services

Oil pipeline/storage

Capacity enhancement Msa – Nrb- Ksm – Eld- ext Kla
Storage – everywhere – port , JKIA, Nrb

Energy

6,000MW in 5yrs – SGR – Msa- Nrb – 1,200MW

ICT - Numerous

LAPSSET - infinite

4.0 COMPARISONS

WB infra data 2012

	Ke	UG	TZ	Ethiopia	R Korea	USA
Dep	83k	6k	27k	62k	285k	9,860k
TEUs	736k	-	454k	-	21m	43m
Kwh/cap	155	-	78	52	9,744	13,395
Inet/100	32.1	14.7	13.1	1.5	84	81
Cell/100	72	46	57	24	110	98
Pvd.rds	14 ⁰ %	-	14.9 ⁰ %	-	80 ⁰ %	100 ⁰ %
Rail km	-	-	-	-	3379	228,513



ASANTENI SANA