



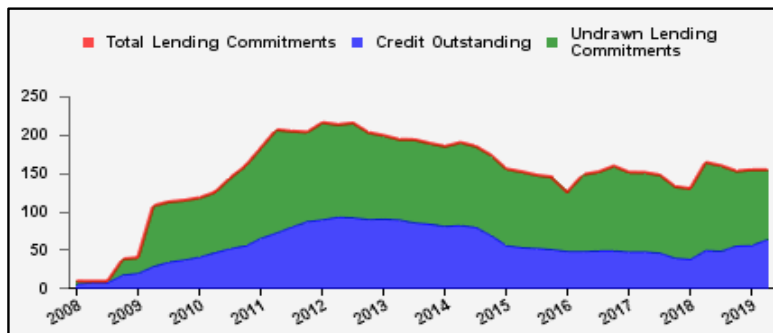
## Weekly Report on Key Financial Statistics

**Table 1. Key Indicators 1/**

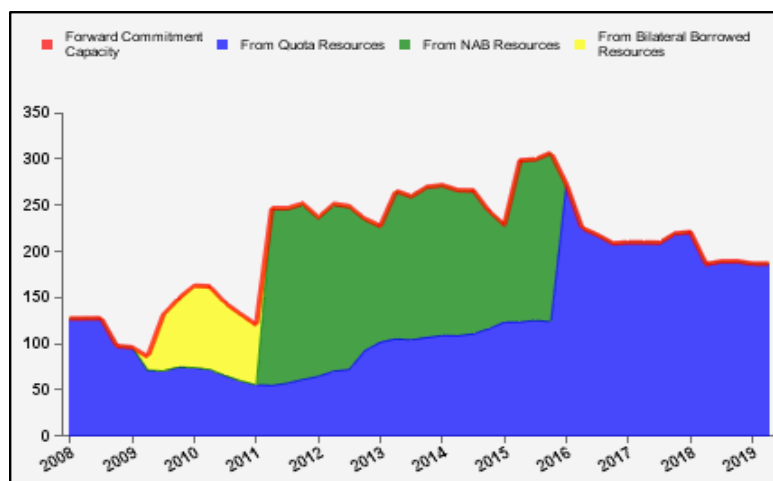
as of April 10, 2019

(In billions of SDRs, unless indicated otherwise)

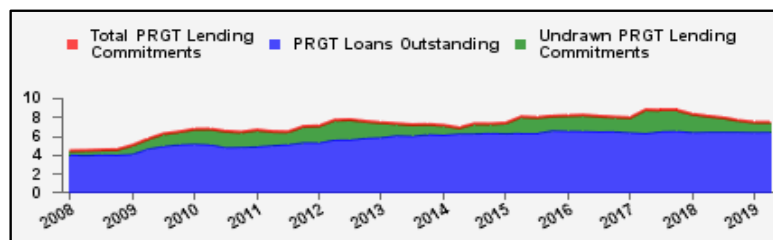
GRA Lending and Resources	SDR	USD
I. Total Lending Commitments, of which:	154.1	214.1
Undrawn Lending Commitments	90.4	125.5
Credit Outstanding	63.8	88.6
II. Forward Commitment Capacity (FCC)	186.8	259.5
III. Unactivated Borrowed Resources, of which: 2/	379.9	527.8
NAB	129.3	179.6
Bilateral Borrowing Agreements	250.6	348.2
IV. Total GRA Resources (I. + II. + III.)	720.8	1,001.4



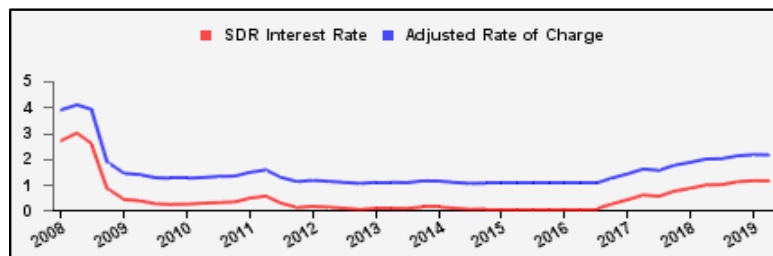
Forward Commitment Capacity (FCC)	SDR	USD
I. Usable resources (a) + (b)	355.7	494.1
(a) Fund quota resources	355.7	494.1
(b) Fund borrowed resources	--	--
II. Undrawn balances under GRA lending commitments	90.4	125.5
Precautionary 3/	64.7	89.8
Non-precautionary	25.7	35.7
III. Uncommitted usable resources (I - II)	265.3	368.6
IV. Repurchases one-year forward	4.8	6.7
V. Repayments of borrowed resources one-year forward	3.3	4.6
VI. Prudential balance	80.0	111.2
VII. Forward commitment capacity (III + IV - V - VI) 4/	186.8	259.5
(a) From Quota resources	186.8	259.5
(b) From NAB resources	--	--
(c) From Bilateral Borrowed resources	--	--



PRGT Lending and Resources	SDR	USD
I. Total Lending Commitments, of which:	7.4	10.3
Ia. Undrawn lending commitments	1.0	1.4
Ib. Loans Outstanding	6.4	8.9
II. Undrawn Loan Resources	15.0	20.8
III. Uncommitted Loan Resources (II. - Ia.)	14.0	19.5



Rates	Percent
1 SDR = USD	1.38926
SDR Interest Rate	1.140
Adjusted Rate of Charge	2.144
Adjusted Rate of Remuneration	1.135



1/ -- Indicates zero value, zero indicates amounts less than SDR 0.05 billion. Totals may not add due to rounding.

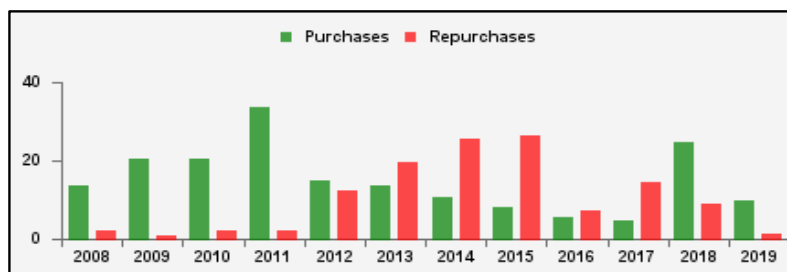
2/ Excludes 20% prudential balance and borrowing lines of participants/members that are currently not in the FTP; for the NAB, also excludes borrowing lines of participants that have not yet adhered to the NAB as well as any outstanding NAB claims and undrawn committed resources under current NAB-eligible arrangements.

3/ Undrawn balances under arrangements treated as precautionary by the authorities.

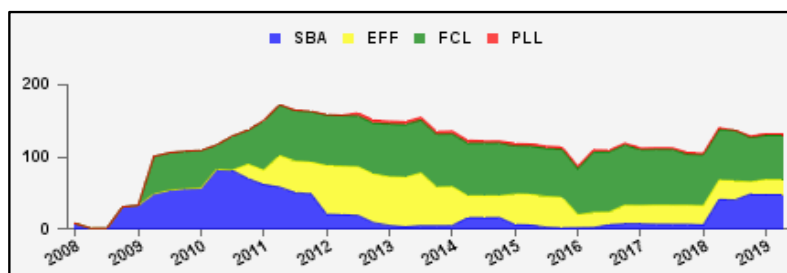
4/ Does not include the Bilateral Borrowing Agreements (activated only if the modified FCC is below SDR 100 billion).

**Table 2a. Use of GRA Resources 1/**  
as of April 10, 2019  
(In billions of SDRs, unless indicated otherwise)

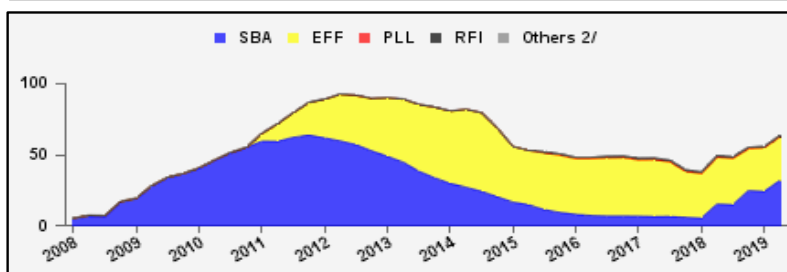
<b>GRA Lending (Calendar year to date)</b>	SDR	USD
Purchases	9.7	13.5
Financed by Quota Resources	9.7	13.5
Financed by Borrowings	--	--
Repurchases	1.3	1.9
Commitments Approved	3.0	4.2



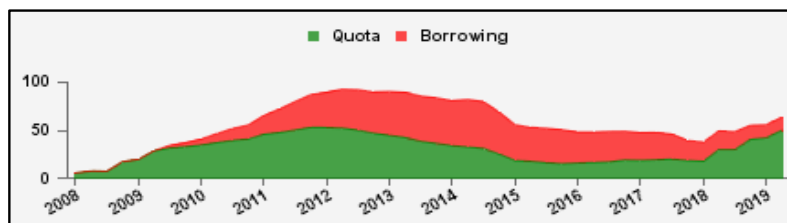
<b>Commitments Under Current GRA Arrangements</b>	Number of	SDR	USD
Standby Arrangement (SBA)	4	48.5	67.4
Extended Fund Facility (EFF)	13	20.1	27.9
Flexible Credit Line (FCL)	2	61.3	85.2
Precautionary and Liquidity Line (PLL)	1	2.2	3.0
<b>Total Current Arrangements</b>	<b>20</b>	<b>132.1</b>	<b>183.5</b>



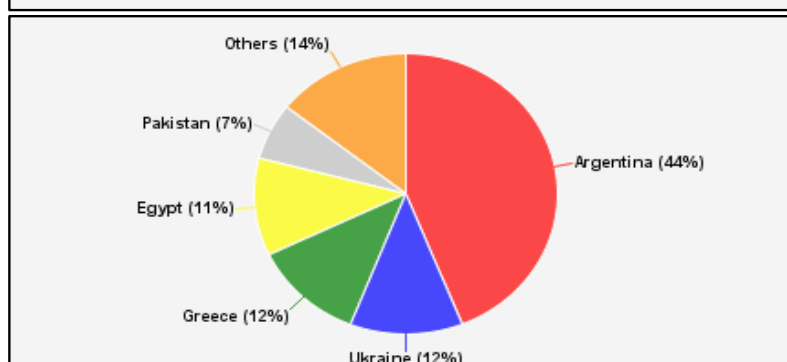
<b>Credit Outstanding by Facility</b>	SDR	USD
Standby Arrangement (SBA)	32.0	44.4
Extended Fund Facility (EFF)	30.8	42.8
Flexible Credit Line (FCL)	--	--
Precautionary and Liquidity Line (PLL)	--	--
Rapid Financing Instrument (RFI)	0.9	1.3
Others 2/	0.0	0.0
<b>Total Credit Outstanding</b>	<b>63.8</b>	<b>88.6</b>



<b>Credit Outstanding by Financing Sources</b>	SDR	USD
Financed by Quota Resources	50.1	69.6
Financed by Borrowings	13.7	19.0
<b>Total Credit Outstanding</b>	<b>63.8</b>	<b>88.6</b>



<b>Credit Outstanding</b>		
<b>Largest 5 Exposures 3/</b>	SDR	As a % of quota
<b>Argentina</b>	28.0	879
<b>Ukraine</b>	7.7	381
Greece	7.6	312
<b>Egypt</b>	7.2	352
Pakistan	4.2	204



1/ -- Indicates zero value, zero indicates amounts less than SDR 0.05 billion. Totals may not add due to rounding.

2/ Includes outstanding credit under the former Compensatory Financing Facility; for the chart also includes outstanding credit under the former Emergency Post Conflict and Natural Disaster Assistance policy.

3/ Members with current arrangements are bolded.

## Table 2b. Current Financial Arrangements (GRA)

as of April 10, 2019  
(In millions of SDRs, unless indicated otherwise) 1/

Member	Amount Committed	Amount Undrawn	Amount Drawn	Credit Outstanding		Period of Arrangement	
				Amount 2/	As a % of Quota	Effective Date	Expiration Date
<b>Standby Arrangement (4)</b>	<b>48,540</b>	<b>18,032</b>	<b>30,508</b>	<b>38,341</b>			
Argentina	40,714	12,700	28,014	28,014	879	20-Jun-18	19-Jun-21
Iraq	3,831	2,337	1,494	2,163	130	07-Jul-16	06-Jul-19
Jamaica 3/	1,195	1,195	--	501	131	11-Nov-16	10-Nov-19
Ukraine	2,800	1,800	1,000	7,664	381	18-Dec-18	17-Feb-20
<b>Extended Fund Facility (13)</b>	<b>20,096</b>	<b>8,861</b>	<b>11,235</b>	<b>12,202</b>			
Angola	2,673	1,958	715	715	97	07-Dec-18	06-Dec-21
Barbados	208	173	35	35	37	01-Oct-18	30-Sep-22
Bosnia-Herzegovina	443	316	127	148	56	07-Sep-16	06-Sep-20
Cote d'Ivoire	434	129	305	305	47	12-Dec-16	11-Dec-19
Ecuador	3,035	2,565	470	731	105	11-Mar-19	10-Mar-22
Egypt	8,597	1,433	7,164	7,164	352	11-Nov-16	10-Nov-19
Gabon	464	179	286	286	132	19-Jun-17	18-Jun-20
Georgia	210	90	120	145	69	12-Apr-17	11-Apr-20
Jordan	515	412	103	458	134	24-Aug-16	23-Aug-19
Moldova	86	32	54	116	67	07-Nov-16	06-Nov-19
Mongolia	315	157	157	157	217	24-May-17	23-May-20
Sri Lanka	1,071	356	715	715	124	03-Jun-16	02-Jun-19
Tunisia	2,046	1,061	985	1,227	225	20-May-16	19-May-20
<b>Flexible Credit Line (2)</b>	<b>61,324</b>	<b>61,324</b>	--	--			
Colombia 3/	7,848	7,848	--	--	--	25-May-18	24-May-20
Mexico 3/	53,476	53,476	--	--	--	29-Nov-17	28-Nov-19
<b>Precautionary and Liquidity Line (1)</b>	<b>2,151</b>	<b>2,151</b>	--	--			
Morocco 3/	2,151	2,151	--	--	--	17-Dec-18	16-Dec-20
<b>Total Current GRA Arrangements (20)</b>	<b>132,111</b>	<b>90,368</b>	<b>41,743</b>	<b>50,543</b>			
Memorandum Items:							
Credit outstanding from members without current arrangement and outright disbursements.				13,217			
Total Credit Outstanding.				63,760			

1/ -- Indicates zero value, zero indicates amounts less than SDR 0.5 million. Totals may not add due to rounding.

2/ Includes Credit Outstanding under expired arrangements and outright disbursements.

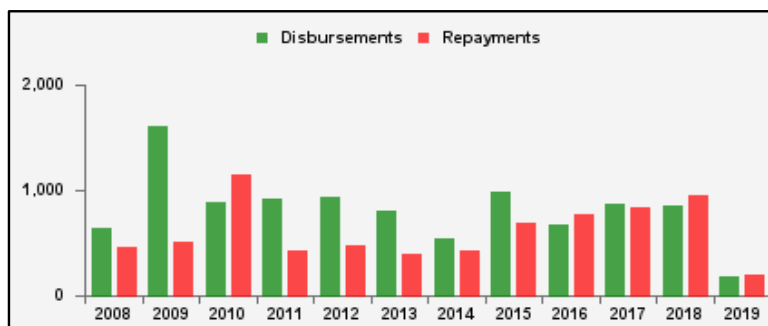
3/ The undrawn commitment of the arrangement is treated as precautionary by the authorities.

**Table 3a. Use of Concessional PRGT Resources 1/**

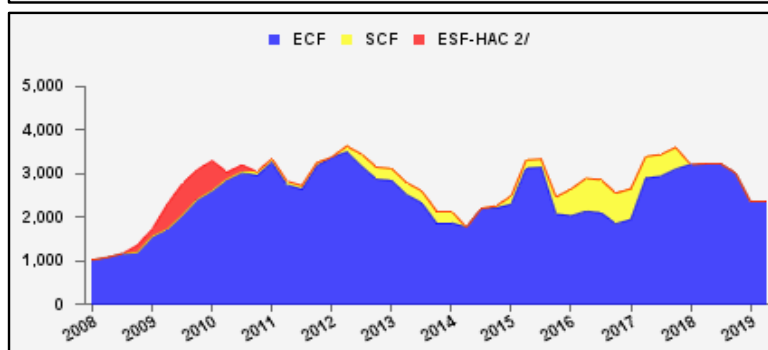
as of April 10, 2019

(In millions of SDRs, unless indicated otherwise)

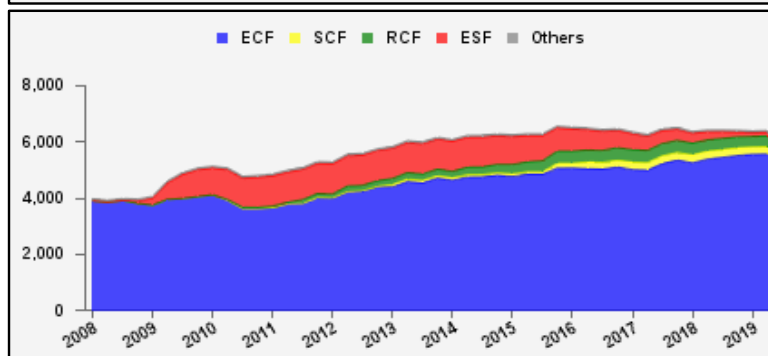
PRGT Lending (Calendar year to date)	SDR	USD
Disbursements	182.3	253.3
Repayments	193.2	268.4
Commitments Approved	--	--



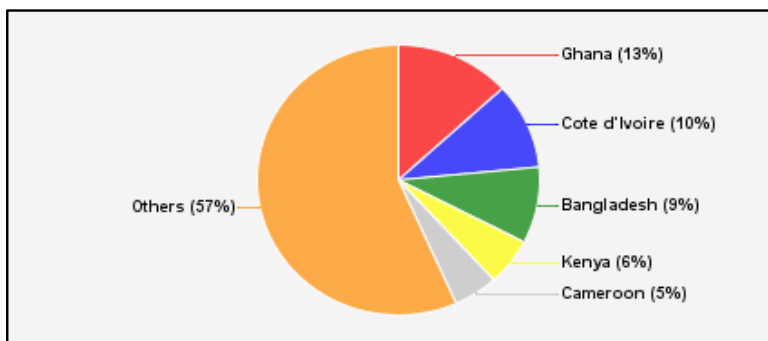
Commitments Under Current PRGT Arrangements	Number of	SDR	USD
Extended Credit Facility (ECF)	16	2,359.9	3,278.4
Standby Credit Facility (SCF)	--	--	--
Total Current Arrangements	16	2,359.9	3,278.4



Loans Outstanding by Facility	SDR	USD
Extended Credit Facility (ECF)	5,574.4	7,744.3
Standby Credit Facility (SCF)	263.6	366.2
Rapid Credit Facility (RCF)	375.0	521.0
(former) Exogenous Shocks Facility (ESF)	127.8	177.5
Others 3/	74.5	103.5
Total Loans Outstanding	6,415.3	8,912.5



Loans Outstanding		
Largest 5 Exposures 4/	SDR	As a % of quota
Ghana	844.4	114
<b>Cote d'Ivoire</b>	661.2	102
Bangladesh	585.1	55
Kenya	361.2	67
<b>Cameroon</b>	326.7	118



1/ -- Indicates zero value, zero indicates amounts less than SDR 0.05 million. Totals may not add due to rounding.

2/ The last commitment under the old ESF-HAC Facility expired on December 3, 2011.

3/ Includes outstanding and overdue loans under the (former) Structural Adjustment Facility and Trust Fund.

4/ Members with current arrangements are bolded.

**Table 3b. Current Financial Arrangements (PRGT)**

as of April 10, 2019  
(In millions of SDRs, unless indicated otherwise) 1/

Member	Amount Committed	Amount Undrawn	Amount Drawn	Loans Outstanding		Period of Arrangement	
				Amount 2/	As a % of Quota	Effective Date	Expiration Date
<b>Extended Credit Facility (16)</b>	<b>2,360</b>	<b>989</b>	<b>1,371</b>	<b>3,058</b>			
Afghanistan	32	10	23	40	12	20-Jul-16	31-Dec-19
Benin	111	48	64	112	91	07-Apr-17	06-Apr-20
Burkina Faso	108	72	36	153	127	14-Mar-18	13-Mar-21
Cameroon	483	166	317	327	118	26-Jun-17	25-Jun-20
Central African Rep.	134	23	111	144	130	20-Jul-16	19-Jul-19
Chad	224	84	140	230	164	30-Jun-17	29-Jun-20
Cote d'Ivoire	217	65	152	661	102	12-Dec-16	11-Dec-19
Guinea	120	69	52	231	108	11-Dec-17	10-Dec-20
Guinea-Bissau	23	6	17	24	85	10-Jul-15	09-Jul-19
Madagascar	251	63	188	249	102	27-Jul-16	26-Nov-19
Malawi	78	56	22	157	113	30-Apr-18	29-Apr-21
Mauritania	116	66	50	95	74	06-Dec-17	05-Dec-20
Moldova	43	16	27	97	56	07-Nov-16	06-Nov-19
Niger	118	62	56	159	121	23-Jan-17	22-Jan-20
Sierra Leone	124	109	16	259	125	30-Nov-18	29-Jun-22
Togo	176	75	101	119	81	05-May-17	04-May-20
<b>Total Current PRGT Arrangements (16)</b>	<b>2,360</b>	<b>989</b>	<b>1,371</b>	<b>3,058</b>			
Memorandum Items:							
Credit outstanding from members without current arrangement and outright loans.				3,357			
Total Credit Outstanding.				6,415			

1/ -- Indicates zero value, zero indicates amounts less than SDR 0.5 million. Totals may not add due to rounding.

2/ Includes Loans Outstanding under expired arrangements and outright loans.