



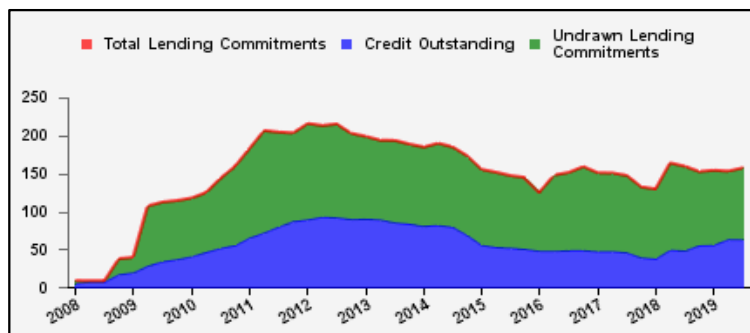
Weekly Report on Key Financial Statistics

Table 1. Key Indicators 1/

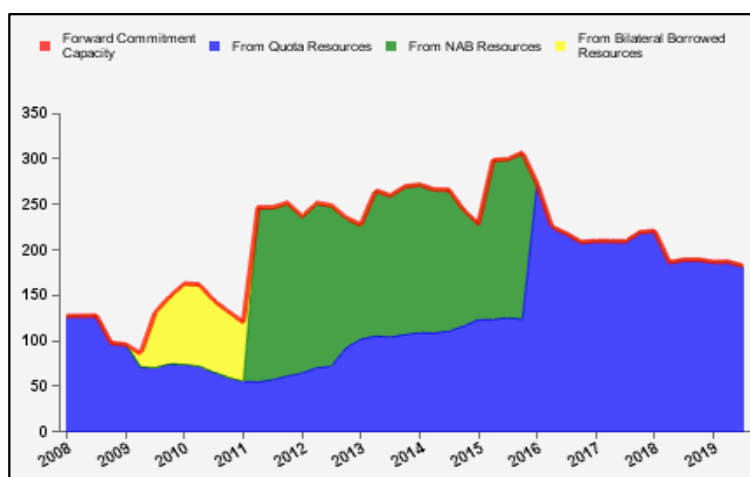
as of July 05, 2019

(In billions of SDRs, unless indicated otherwise)

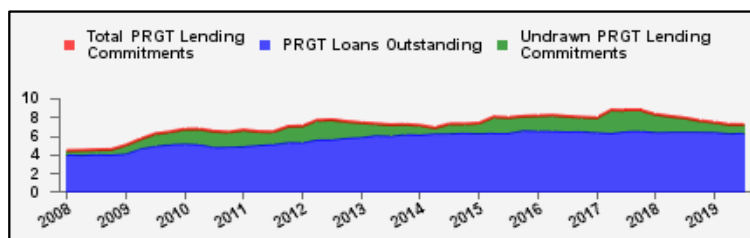
GRA Lending and Resources	SDR	USD
I. Total Lending Commitments, of which:	157.3	217.6
Undrawn Lending Commitments	93.8	129.8
Credit Outstanding	63.4	87.8
II. Forward Commitment Capacity (FCC)	182.6	252.8
III. Unactivated Borrowed Resources, of which: 2/	381.8	528.4
NAB	130.4	180.5
Bilateral Borrowing Agreements	251.4	347.8
IV. Total GRA Resources (I. + II. + III.)	721.7	998.8



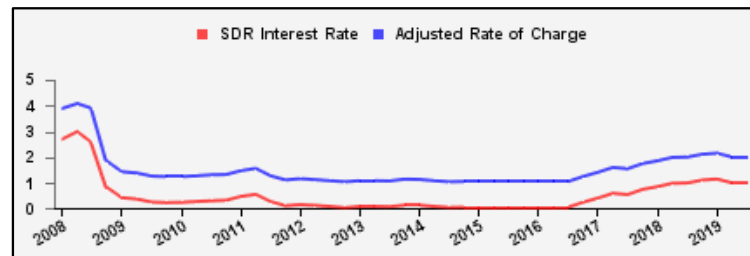
Forward Commitment Capacity (FCC)	SDR	USD
I. Usable resources (a) + (b)	355.0	491.3
(a) Fund quota resources	355.0	491.3
(b) Fund borrowed resources	--	--
II. Undrawn balances under GRA lending commitments	93.8	129.8
Precautionary 3/	64.9	89.7
Non-precautionary	29.0	40.1
III. Uncommitted usable resources (I - II)	261.2	361.5
IV. Repurchases one-year forward	4.5	6.2
V. Repayments of borrowed resources one-year forward	3.1	4.2
VI. Prudential balance	80.0	110.7
VII. Forward commitment capacity (III + IV - V - VI) 4/	182.6	252.8
(a) From Quota resources	182.6	252.8
(b) From NAB resources	--	--
(c) From Bilateral Borrowed resources	--	--



PRGT Lending and Resources	SDR	USD
I. Total Lending Commitments, of which:	7.2	9.9
Ia. Undrawn lending commitments	0.9	1.2
Ib. Loans Outstanding	6.3	8.7
II. Undrawn Loan Resources	14.8	20.5
III. Uncommitted Loan Resources (II. - Ia.)	13.9	19.3



Rates	Percent
1 SDR = USD	1.38388
SDR Interest Rate	0.999
Adjusted Rate of Charge	2.003
Adjusted Rate of Remuneration	0.995



1/ -- Indicates zero value, zero indicates amounts less than SDR 0.05 billion. Totals may not add due to rounding.

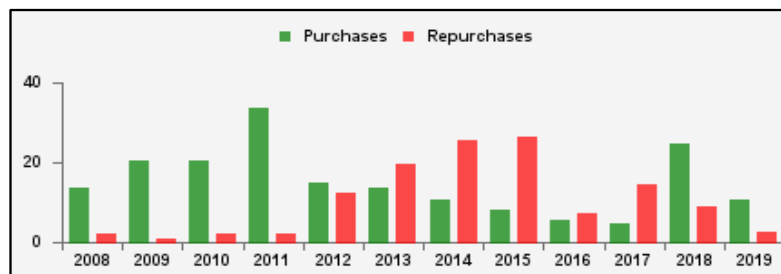
2/ Excludes 20% prudential balance and borrowing lines of participants/members that are currently not in the FTP; for the NAB, also excludes borrowing lines of participants that have not yet adhered to the NAB as well as any outstanding NAB claims and undrawn committed resources under current NAB-eligible arrangements.

3/ Undrawn balances under arrangements treated as precautionary by the authorities.

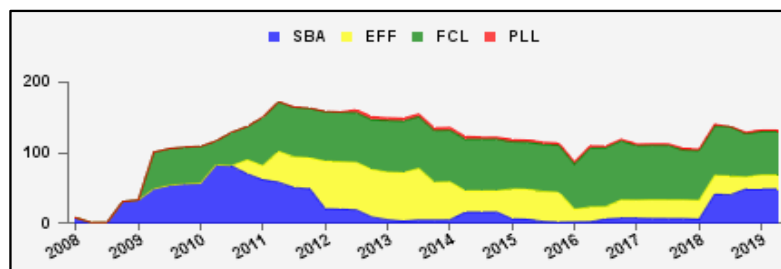
4/ Does not include the Bilateral Borrowing Agreements (activated only if the modified FCC is below SDR 100 billion).

Table 2a. Use of GRA Resources 1/
as of July 05, 2019
(In billions of SDRs, unless indicated otherwise)

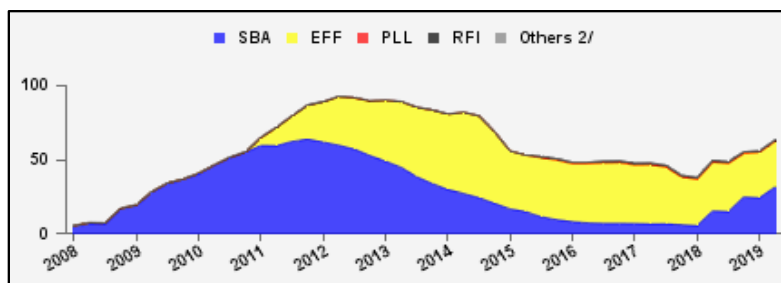
GRA Lending (Calendar year to date)	SDR	USD
Purchases	10.6	14.7
Financed by Quota Resources	10.6	14.7
Financed by Borrowings	--	--
Repurchases	2.6	3.5
Commitments Approved	7.5	10.4



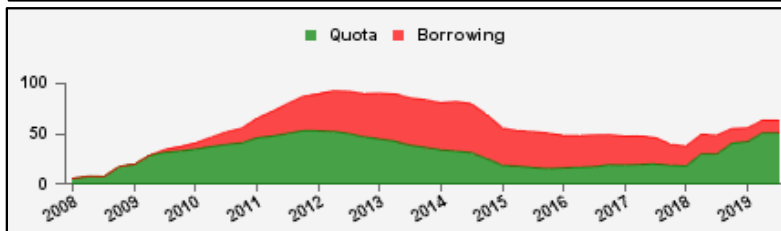
Commitments Under Current GRA Arrangements	Number of	SDR	USD
Standby Arrangement (SBA)	5	48.7	67.4
Extended Fund Facility (EFF)	14	24.3	33.6
Flexible Credit Line (FCL)	2	61.3	84.9
Precautionary and Liquidity Line (PLL)	1	2.2	3.0
Total Current Arrangements	22	136.5	188.9



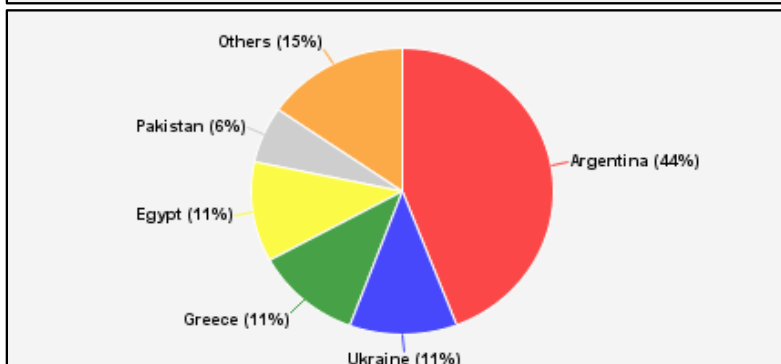
Credit Outstanding by Facility	SDR	USD
Standby Arrangement (SBA)	31.4	43.5
Extended Fund Facility (EFF)	31.2	43.1
Flexible Credit Line (FCL)	--	--
Precautionary and Liquidity Line (PLL)	--	--
Rapid Financing Instrument (RFI)	0.8	1.1
Others 2/	0.0	0.0
Total Credit Outstanding	63.4	87.8



Credit Outstanding by Financing Sources	SDR	USD
Financed by Quota Resources	50.9	70.5
Financed by Borrowings	12.5	17.3
Total Credit Outstanding	63.4	87.8



Credit Outstanding		
Largest 5 Exposures 3/	SDR	As a % of quota
Argentina	28.0	879
Ukraine	7.3	362
Greece	7.2	297
Egypt	7.2	352
Pakistan	4.0	199



1/ -- Indicates zero value, zero indicates amounts less than SDR 0.05 billion. Totals may not add due to rounding.

2/ Includes outstanding credit under the former Compensatory Financing Facility; for the chart also includes outstanding credit under the former Emergency Post Conflict and Natural Disaster Assistance policy.

3/ Members with current arrangements are bolded.

Table 2b. Current Financial Arrangements (GRA)

as of July 05, 2019
(In millions of SDRs, unless indicated otherwise) 1/

Member	Amount Committed	Amount Undrawn	Amount Drawn	Credit Outstanding		Period of Arrangement	
				Amount 2/	As a % of Quota	Effective Date	Expiration Date
Standby Arrangement (5)	48,720	18,212	30,508	37,975			
Argentina	40,714	12,700	28,014	28,014	879	20-Jun-18	19-Jun-21
Armenia 3/	180	180	--	138	107	17-May-19	16-May-22
Iraq	3,831	2,337	1,494	2,051	123	07-Jul-16	06-Jul-19
Jamaica 3/	1,195	1,195	--	480	125	11-Nov-16	10-Nov-19
Ukraine	2,800	1,800	1,000	7,293	362	18-Dec-18	17-Feb-20
Extended Fund Facility (14)	24,271	12,131	12,140	16,951			
Angola	2,673	1,779	894	894	121	07-Dec-18	06-Dec-21
Barbados	208	138	70	70	74	01-Oct-18	30-Sep-22
Bosnia-Herzegovina	443	316	127	127	48	07-Sep-16	06-Sep-20
Cote d'Ivoire	434	65	369	369	57	12-Dec-16	11-Dec-19
Ecuador	3,035	2,385	650	912	131	11-Mar-19	10-Mar-22
Egypt	8,597	1,433	7,164	7,164	352	11-Nov-16	10-Nov-19
Gabon	464	179	286	286	132	19-Jun-17	18-Jun-20
Georgia	210	60	150	165	78	12-Apr-17	11-Apr-20
Jordan	515	292	223	493	144	24-Aug-16	23-Mar-20
Moldova	86	32	54	116	67	07-Nov-16	06-Nov-19
Mongolia	315	157	157	157	217	24-May-17	23-May-20
Pakistan	4,268	4,268	--	4,033	199	03-Jul-19	02-Oct-22
Sri Lanka	1,071	237	834	834	144	03-Jun-16	02-Jun-20
Tunisia	1,952	791	1,162	1,332	244	20-May-16	19-May-20
Flexible Credit Line (2)	61,324	61,324	--	--			
Colombia 3/	7,848	7,848	--	--	--	25-May-18	24-May-20
Mexico 3/	53,476	53,476	--	--	--	29-Nov-17	28-Nov-19
Precautionary and Liquidity Line (1)	2,151	2,151	--	--			
Morocco 3/	2,151	2,151	--	--	--	17-Dec-18	16-Dec-20
Total Current GRA Arrangements (21)	136,466	93,818	42,648	54,927			
Memorandum Items:							
Credit outstanding from members without current arrangement and outright disbursements.				8,515			
Total Credit Outstanding.				63,442			

1/ -- Indicates zero value, zero indicates amounts less than SDR 0.5 million. Totals may not add due to rounding.

2/ Includes Credit Outstanding under expired arrangements and outright disbursements.

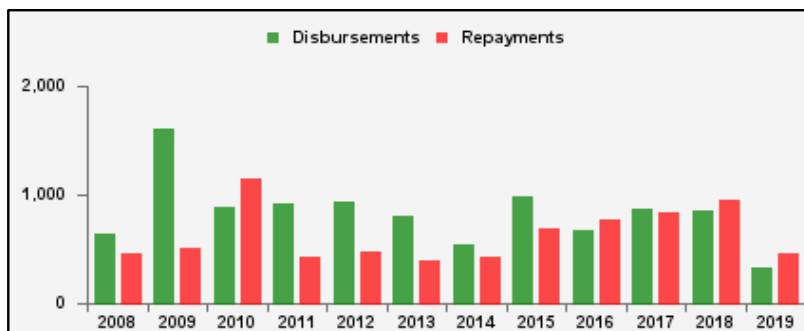
3/ The undrawn commitment of the arrangement is treated as precautionary by the authorities.

Table 3a. Use of Concessional PRGT Resources 1/

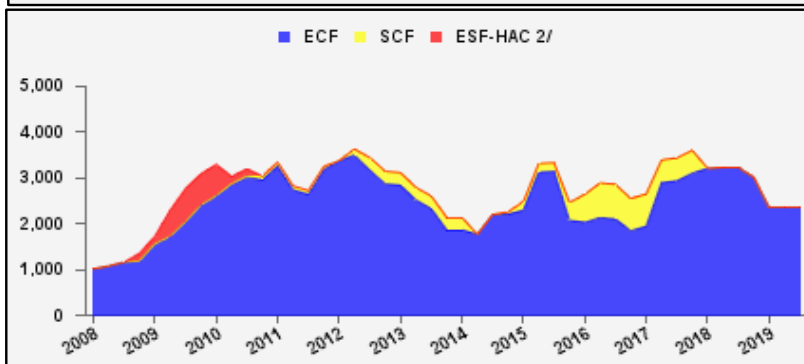
as of July 05, 2019

(In millions of SDRs, unless indicated otherwise)

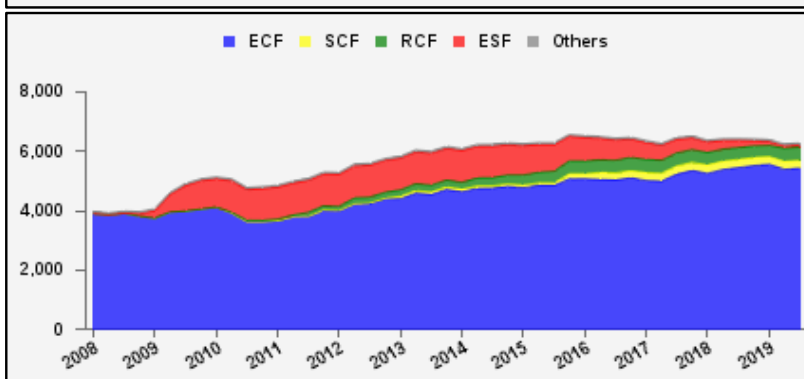
PRGT Lending (Calendar year to date)	SDR	USD
Disbursements	370.6	512.9
Repayments	507.9	702.9
Commitments Approved	85.2	117.9



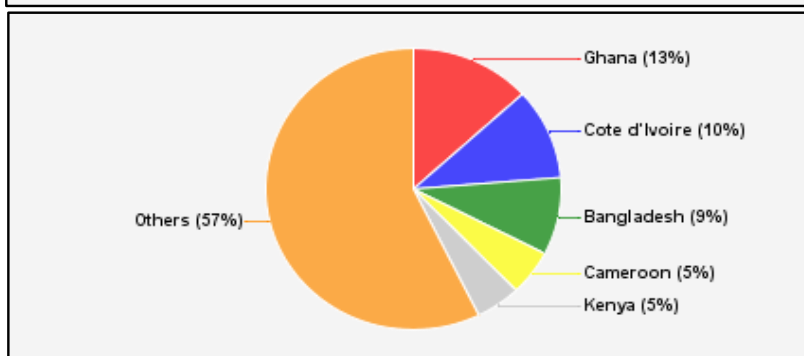
Commitments Under Current PRGT Arrangements	Number of	SDR	USD
Extended Credit Facility (ECF)	16	2,359.9	3,265.8
Standby Credit Facility (SCF)	--	--	--
Total Current Arrangements	16	2,359.9	3,265.8



Loans Outstanding by Facility	SDR	USD
Extended Credit Facility (ECF)	5,432.7	7,518.2
Standby Credit Facility (SCF)	262.9	363.8
Rapid Credit Facility (RCF)	449.7	622.4
(former) Exogenous Shocks Facility (ESF)	69.0	95.5
Others 3/	74.5	103.1
Total Loans Outstanding	6,288.8	8,732.9



Loans Outstanding		
Largest 5 Exposures 4/	SDR	As a % of quota
Ghana	824.3	112
Cote d'Ivoire	659.0	101
Bangladesh	557.7	52
Cameroon	326.7	118
Kenya	305.3	56



1/ -- Indicates zero value, zero indicates amounts less than SDR 0.05 million. Totals may not add due to rounding.

2/ The last commitment under the old ESF-HAC Facility expired on December 3, 2011.

3/ Includes outstanding and overdue loans under the (former) Structural Adjustment Facility and Trust Fund.

4/ Members with current arrangements are bolded.

Table 3b. Current Financial Arrangements (PRGT)
as of July 05, 2019
(In millions of SDRs, unless indicated otherwise) 1/

Member	Amount Committed	Amount Undrawn	Amount Drawn	Loans Outstanding		Period of Arrangement	
				Amount 2/	As a % of Quota	Effective Date	Expiration Date
Extended Credit Facility (16)	2,360	886	1,474	3,084			
Afghanistan	32	5	27	43	13	20-Jul-16	31-Dec-19
Benin	111	32	80	125	101	07-Apr-17	06-Apr-20
Burkina Faso	108	72	36	142	118	14-Mar-18	13-Mar-21
Cameroon	483	166	317	327	118	26-Jun-17	25-Jun-20
Central African Rep.	134	23	111	142	128	20-Jul-16	19-Jul-19
Chad	224	84	140	230	164	30-Jun-17	29-Jun-20
Cote d'Ivoire	217	32	185	659	101	12-Dec-16	11-Dec-19
Guinea	120	69	52	231	108	11-Dec-17	10-Dec-20
Guinea-Bissau	23	6	17	23	83	10-Jul-15	09-Jul-19
Madagascar	251	63	188	249	102	27-Jul-16	26-Nov-19
Malawi	78	56	22	154	111	30-Apr-18	29-Apr-21
Mauritania	116	50	66	106	82	06-Dec-17	05-Dec-20
Moldova	43	16	27	93	54	07-Nov-16	06-Nov-19
Niger	118	28	90	192	146	23-Jan-17	22-Apr-20
Sierra Leone	124	109	16	253	122	30-Nov-18	29-Jun-22
Togo	176	75	101	115	78	05-May-17	04-May-20
Total Current PRGT Arrangements (16)	2,360	886	1,474	3,084			
Memorandum Items:							
Credit outstanding from members without current arrangement and outright loans.				3,205			
Total Credit Outstanding.				6,289			

1/ -- Indicates zero value, zero indicates amounts less than SDR 0.5 million. Totals may not add due to rounding.

2/ Includes Loans Outstanding under expired arrangements and outright loans.