



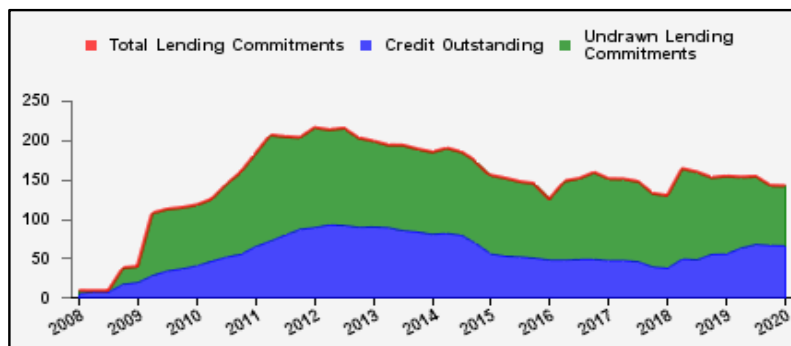
Weekly Report on Key Financial Statistics

Table 1. Key Indicators 1/

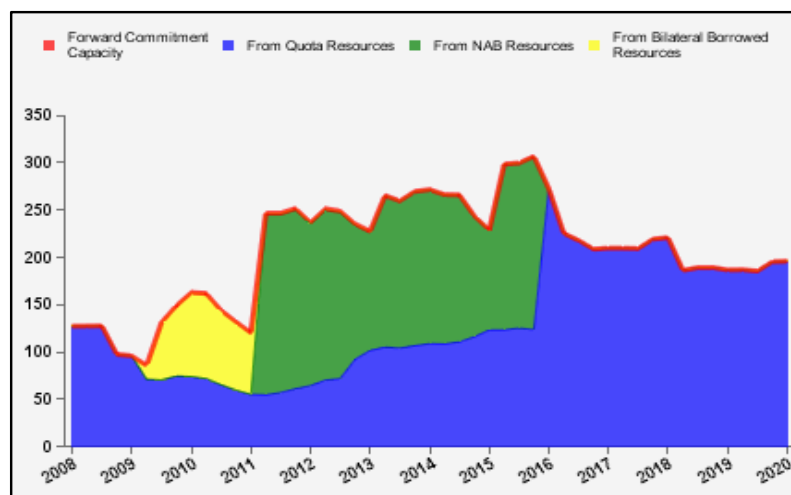
as of February 13, 2020

(In billions of SDRs, unless indicated otherwise)

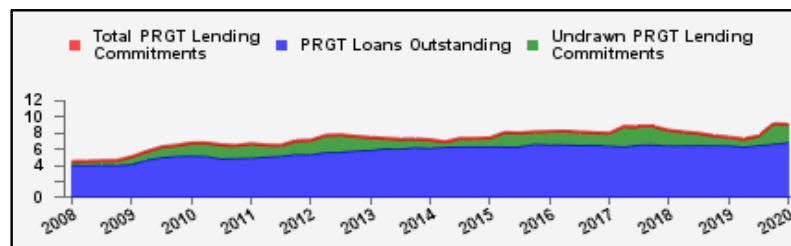
GRA Lending and Resources	SDR	USD
I. Total Lending Commitments, of which:	141.9	194.1
Undrawn Lending Commitments	75.4	103.1
Credit Outstanding	66.5	91.0
II. Forward Commitment Capacity (FCC)	196.0	268.1
III. Unactivated Borrowed Resources, of which: 2/	383.4	524.6
NAB	133.2	182.2
Bilateral Borrowing Agreements	250.2	342.3
IV. Total GRA Resources (I. + II. + III.)	721.3	986.8



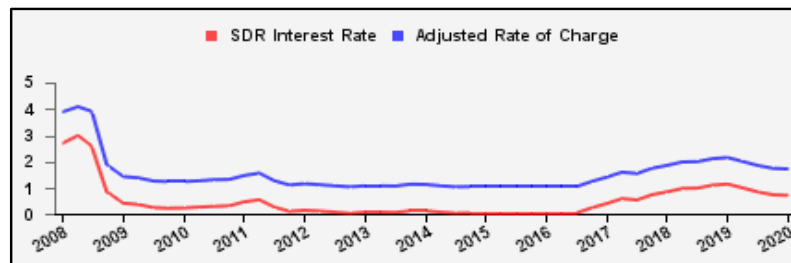
Forward Commitment Capacity (FCC)	SDR	USD
I. Usable resources (a) + (b)	349.9	478.7
(a) Fund quota resources	349.9	478.7
(b) Fund borrowed resources	--	--
II. Undrawn balances under GRA lending commitments	75.4	103.1
Precautionary 3/	54.9	75.1
Non-precautionary	20.5	28.0
III. Uncommitted usable resources (I - II)	274.6	375.6
IV. Repurchases one-year forward	3.2	4.3
V. Repayments of borrowed resources one-year forward	1.8	2.4
VI. Prudential balance	80.0	109.5
VII. Forward commitment capacity (III + IV - V - VI) 4/	195.9	268.1
(a) From Quota resources	195.9	268.1
(b) From NAB resources	--	--
(c) From Bilateral Borrowed resources	--	--



PRGT Lending and Resources	SDR	USD
I. Total Lending Commitments, of which:	9.0	12.3
Ia. Undrawn lending commitments	2.2	3.1
Ib. Loans Outstanding	6.8	9.3
II. Undrawn Loan Resources	13.8	18.9
III. Uncommitted Loan Resources (II. - Ia.)	11.6	15.8



Rates	Percent
1 SDR = USD	1.36808
SDR Interest Rate	0.715
Adjusted Rate of Charge	1.719
Adjusted Rate of Remuneration	0.713



1/ -- Indicates zero value, zero indicates amounts less than SDR 0.05 billion. Totals may not add due to rounding.

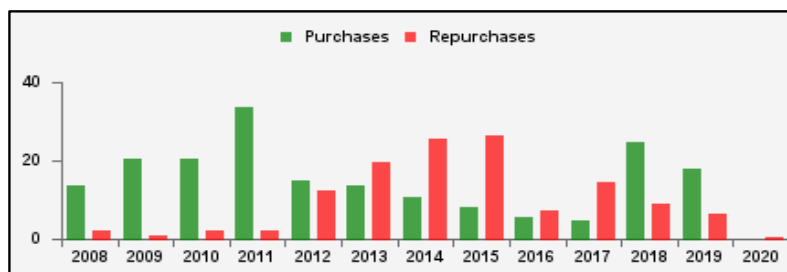
2/ Excludes 20% prudential balance and borrowing lines of participants/members that are currently not in the FTP; for the NAB, also excludes borrowing lines of participants that have not yet adhered to the NAB as well as any outstanding NAB claims and undrawn committed resources under current NAB-eligible arrangements.

3/ Undrawn balances under arrangements treated as precautionary by the authorities.

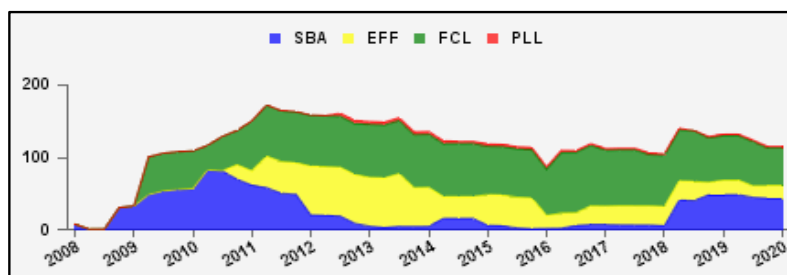
4/ Does not include the Bilateral Borrowing Agreements (activated only if the modified FCC is below SDR 100 billion).

Table 2a. Use of GRA Resources 1/
as of February 13, 2020
(In billions of SDRs, unless indicated otherwise)

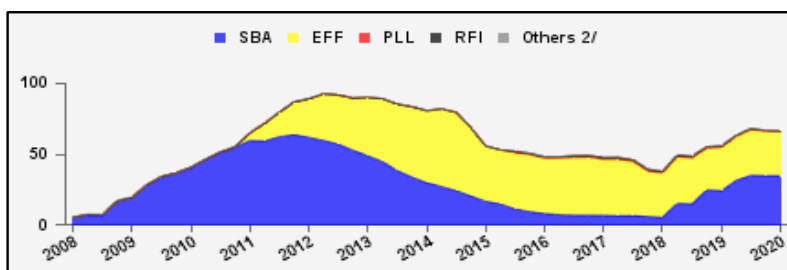
GRA Lending (Calendar year to date)	SDR	USD
Purchases	--	--
Financed by Quota Resources	--	--
Financed by Borrowings	--	--
Repurchases	0.4	0.6
Commitments Approved	--	--



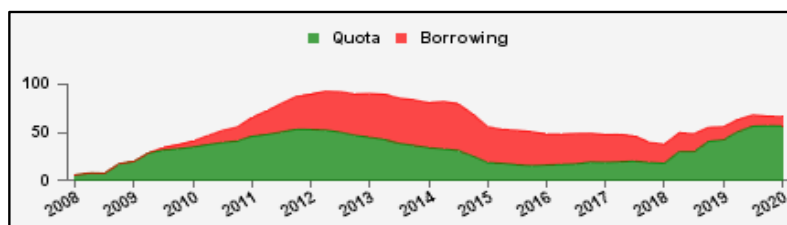
Commitments Under Current GRA Arrangements	Number of	SDR	USD
Standby Arrangement (SBA)	4	43.8	60.0
Extended Fund Facility (EFF)	15	16.9	23.1
Flexible Credit Line (FCL)	2	52.4	71.7
Precautionary and Liquidity Line (PLL)	1	2.2	2.9
Total Current Arrangements	22	115.3	157.8



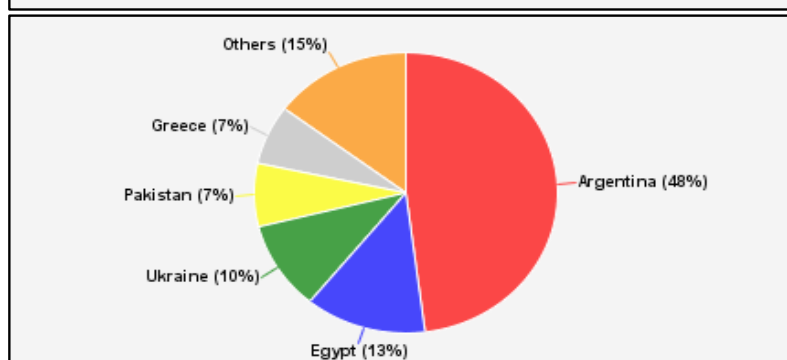
Credit Outstanding by Facility	SDR	USD
Standby Arrangement (SBA)	34.8	47.6
Extended Fund Facility (EFF)	31.3	42.8
Flexible Credit Line (FCL)	--	--
Precautionary and Liquidity Line (PLL)	--	--
Rapid Financing Instrument (RFI)	0.4	0.6
Others 2/	0.0	0.0
Total Credit Outstanding	66.5	91.0



Credit Outstanding by Financing Sources	SDR	USD
Financed by Quota Resources	56.8	77.6
Financed by Borrowings	9.8	13.4
Total Credit Outstanding	66.5	91.0



	Credit Outstanding	
Largest 5 Exposures 3/	SDR	As a % of quota
Argentina	31.9	1,001
Egypt	8.6	422
Ukraine	6.8	337
Pakistan	4.8	238
Greece	4.6	188



1/ -- Indicates zero value, zero indicates amounts less than SDR 0.05 billion. Totals may not add due to rounding.

2/ Includes outstanding credit under the former Compensatory Financing Facility; for the chart also includes outstanding credit under the former Emergency Post Conflict and Natural Disaster Assistance policy.

3/ Members with current arrangements are bolded.

Table 2b. Current Financial Arrangements (GRA)

as of February 13, 2020
(In millions of SDRs, unless indicated otherwise) 1/

Member	Amount Committed	Amount Undrawn	Amount Drawn	Credit Outstanding		Period of Arrangement	
				Amount 2/	As a % of Quota	Effective Date	Expiration Date
Standby Arrangement (4)	43,844	10,930	32,914	38,822			
Argentina	40,714	8,800	31,914	31,914	1,001	20-Jun-18	19-Jun-21
Armenia 3/	180	180	--	125	97	17-May-19	16-May-22
Honduras 3/	150	150	--	--	--	15-Jul-19	14-Jul-21
Ukraine	2,800	1,800	1,000	6,784	337	18-Dec-18	17-Feb-20
Extended Fund Facility (15)	16,910	9,871	7,040	11,239			
Angola	2,673	1,600	1,073	1,073	145	07-Dec-18	06-Dec-21
Barbados	208	103	105	105	111	01-Oct-18	30-Sep-22
Bosnia-Herzegovina	443	316	127	127	48	07-Sep-16	06-Sep-20
Cote d'Ivoire	563	129	434	434	67	12-Dec-16	11-Dec-20
Ecuador	3,035	2,023	1,012	1,208	173	11-Mar-19	10-Mar-22
Equatorial Guinea	205	176	29	29	19	18-Dec-19	17-Dec-22
Ethiopia	902	812	90	90	30	20-Dec-19	19-Dec-22
Gabon	464	89	375	375	174	19-Jun-17	18-Jun-20
Georgia	210	30	180	180	86	12-Apr-17	11-Apr-21
Jordan	515	292	223	312	91	24-Aug-16	23-Mar-20
Moldova	86	10	77	117	68	07-Nov-16	20-Mar-20
Mongolia	315	157	157	157	217	24-May-17	23-May-20
Pakistan	4,268	3,224	1,044	4,837	238	03-Jul-19	02-Oct-22
Sri Lanka	1,071	119	952	952	165	03-Jun-16	02-Jun-20
Tunisia	1,952	791	1,162	1,242	228	20-May-16	19-May-20
Flexible Credit Line (2)	52,412	52,412	--	--			
Colombia 3/	7,848	7,848	--	--	--	25-May-18	24-May-20
Mexico 3/	44,564	44,564	--	--	--	22-Nov-19	21-Nov-21
Precautionary and Liquidity Line (1)	2,151	2,151	--	--			
Morocco 3/	2,151	2,151	--	--	--	17-Dec-18	16-Dec-20
Total Current GRA Arrangements (22)	115,316	75,363	39,953	50,061			
Memorandum Items:							
Credit outstanding from members without current arrangement and outright disbursements.				16,459			
Total Credit Outstanding.				66,520			

1/ -- Indicates zero value, zero indicates amounts less than SDR 0.5 million. Totals may not add due to rounding.

2/ Includes Credit Outstanding under expired arrangements and outright disbursements.

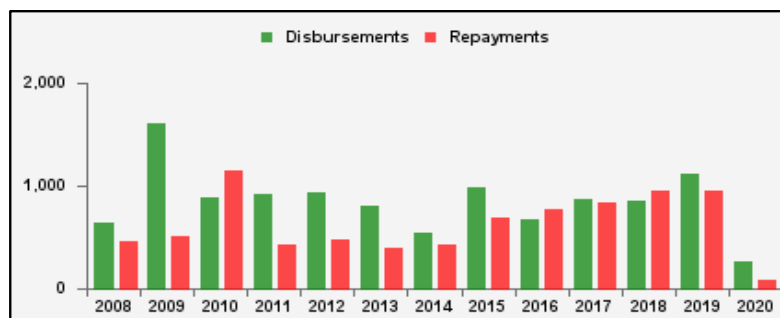
3/ The undrawn commitment of the arrangement is treated as precautionary by the authorities.

Table 3a. Use of Concessional PRGT Resources 1/

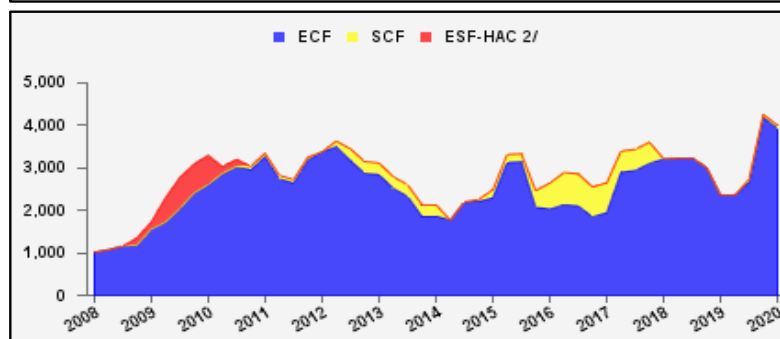
as of February 13, 2020

(In millions of SDRs, unless indicated otherwise)

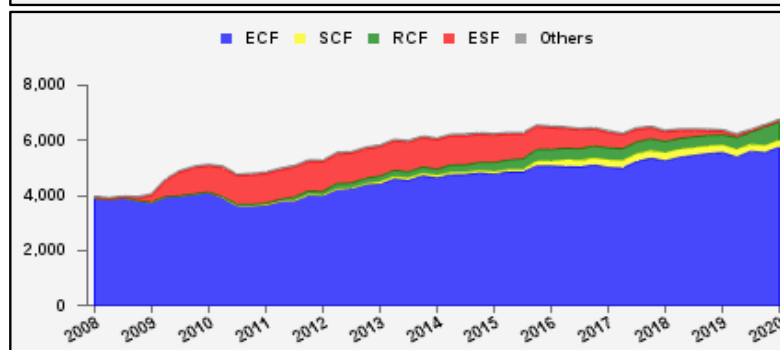
PRGT Lending (Calendar year to date)	SDR	USD
Disbursements	266.3	364.3
Repayments	80.8	110.6
Commitments Approved	--	--



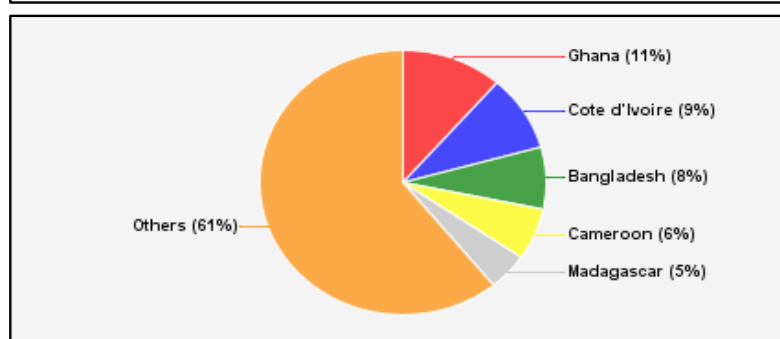
Commitments Under Current PRGT Arrangements	Number of	SDR	USD
Extended Credit Facility (ECF)	18	3,931.4	5,378.5
Standby Credit Facility (SCF)	1	74.9	102.5
Total Current Arrangements	19	4,006.4	5,481.0



Loans Outstanding by Facility	SDR	USD
Extended Credit Facility (ECF)	5,756.2	7,874.9
Standby Credit Facility (SCF)	244.8	334.9
Rapid Credit Facility (RCF)	682.1	933.1
(former) Exogenous Shocks Facility (ESF)	18.8	25.7
Others 3/	74.5	102.0
Total Loans Outstanding	6,776.3	9,270.6



	Loans Outstanding	
Largest 5 Exposures 4/	SDR	As a % of quota
Ghana	773.6	105
Cote d'Ivoire	628.5	97
Bangladesh	512.0	48
Cameroon	427.8	155
Madagascar	308.6	126



1/ -- Indicates zero value, zero indicates amounts less than SDR 0.05 million. Totals may not add due to rounding.

2/ The last commitment under the old ESF-HAC Facility expired on December 3, 2011.

3/ Includes outstanding and overdue loans under the (former) Structural Adjustment Facility and Trust Fund.

4/ Members with current arrangements are bolded.

Table 3b. Current Financial Arrangements (PRGT)

as of February 13, 2020

(In millions of SDRs, unless indicated otherwise) 1/

Member	Amount Committed	Amount Undrawn	Amount Drawn	Loans Outstanding		Period of Arrangement	
				Amount 2/	As a % of Quota	Effective Date	Expiration Date
Extended Credit Facility (18)	3,931	2,156	1,776	3,641			
Benin	111	16	96	134	108	07-Apr-17	31-Jul-20
Burkina Faso	108	36	72	165	137	14-Mar-18	13-Mar-21
Cameroon	483	55	428	428	155	26-Jun-17	25-Jun-20
Central African Rep.	84	72	12	172	155	20-Dec-19	19-Dec-22
Chad	224	28	196	286	204	30-Jun-17	29-Jun-20
Congo, Rep. of	324	292	32	34	21	11-Jul-19	10-Jul-22
Cote d'Ivoire	281	65	217	629	97	12-Dec-16	11-Dec-20
Ethiopia	1,203	1,069	134	146	48	20-Dec-19	19-Dec-22
Guinea	120	52	69	244	114	11-Dec-17	10-Dec-20
Liberia	155	138	17	160	62	11-Dec-19	10-Dec-23
Malawi	106	52	54	177	127	30-Apr-18	29-Apr-21
Mali	140	100	40	251	135	28-Aug-19	27-Aug-22
Mauritania	116	33	83	114	88	06-Dec-17	05-Dec-20
Moldova	43	5	38	75	44	07-Nov-16	20-Mar-20
Niger	118	14	104	201	153	23-Jan-17	22-Apr-20
Sao Tome-Principe	13	11	2	6	44	02-Oct-19	01-Feb-23
Sierra Leone	124	93	31	263	127	30-Nov-18	29-Jun-22
Togo	176	25	151	158	108	05-May-17	04-May-20
Standby Credit Facility (1)	75	75	--	--			
Honduras 3/	75	75	--	--	--	15-Jul-19	14-Jul-21
Total Current PRGT Arrangements (19)	4,006	2,231	1,776	3,641			
Memorandum Items:							
Credit outstanding from members without current arrangement and outright loans.				3,135			
Total Credit Outstanding.				6,776			

1/ -- Indicates zero value, zero indicates amounts less than SDR 0.5 million. Totals may not add due to rounding.

2/ Includes Loans Outstanding under expired arrangements and outright loans.

3/ The undrawn commitment of the arrangement is treated as precautionary by the authorities.