



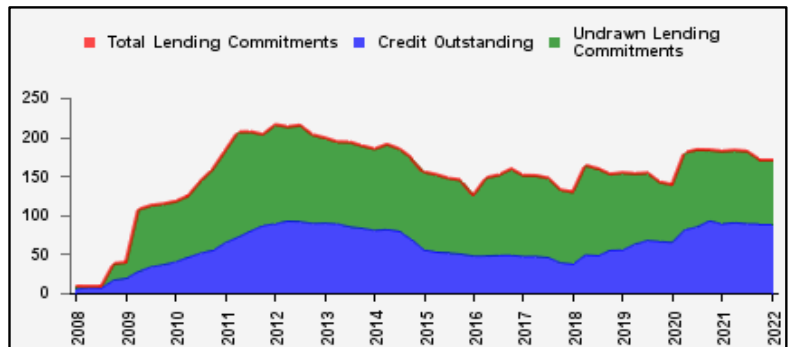
Weekly Report on Key Financial Statistics

Table 1. Key Indicators 1/

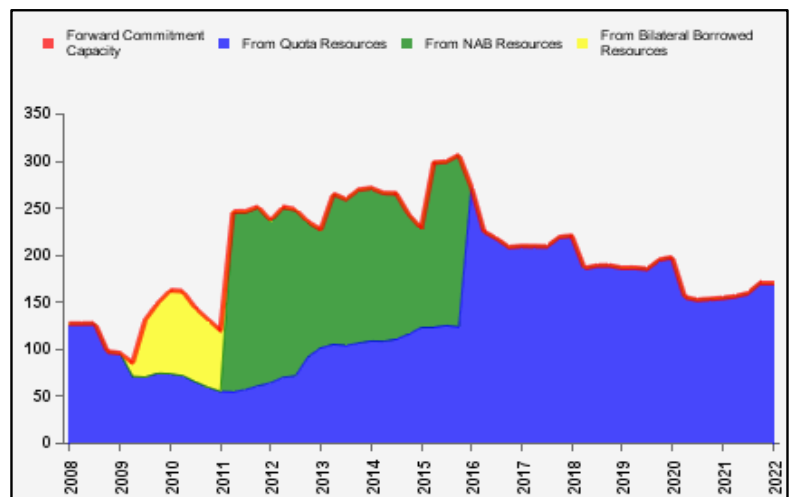
as of January 07, 2022

(In billions of SDRs, unless indicated otherwise)

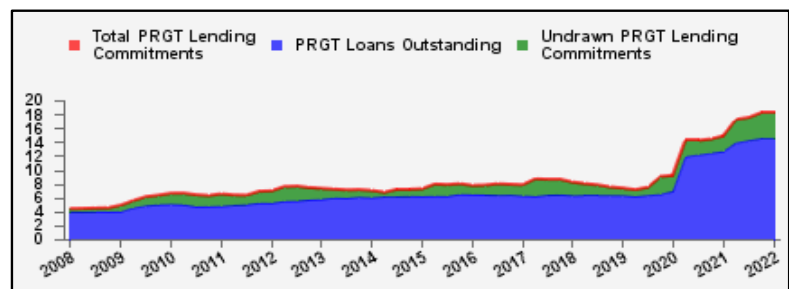
GRA Lending and Resources	SDR	USD
I. Total Lending Commitments, of which:	171.4	239.6
Undrawn Lending Commitments	81.9	114.5
Credit Outstanding	89.5	125.1
II. Forward Commitment Capacity (FCC)	170.8	238.8
III. Unactivated Borrowed Resources, of which: 2/	389.3	544.3
NAB	281.1	393.1
Bilateral Borrowing Agreements	108.1	151.2
IV. Total GRA Resources (I. + II. + III.)	731.4	1,022.7



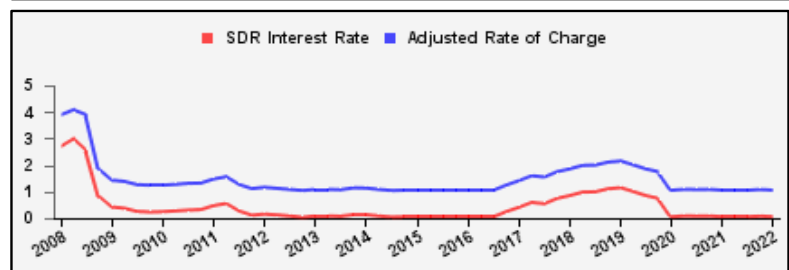
Forward Commitment Capacity (FCC)	SDR	USD
I. Usable resources (a) + (b)	316.6	442.7
(a) Fund quota resources	316.6	442.7
(b) Fund borrowed resources	--	--
II. Undrawn balances under GRA lending commitments	81.9	114.5
Precautionary 3/	71.5	100.0
Non-precautionary	10.4	14.6
III. Uncommitted usable resources (I - II)	234.7	328.2
IV. Repurchases one-year forward	16.5	23.1
V. Repayments of borrowed resources one-year forward	1.5	2.1
VI. Prudential balance	79.0	110.4
VII. Forward commitment capacity (III + IV - V - VI) 4/	170.8	238.8
(a) From Quota resources	170.8	238.8
(b) From NAB resources	--	--
(c) From Bilateral Borrowed resources	--	--



PRGT Lending and Resources	SDR	USD
I. Total Lending Commitments, of which:	18.2	25.5
Ia. Undrawn lending commitments	3.7	5.1
Ib. Loans Outstanding	14.6	20.3
II. Undrawn Loan Resources	19.3	27.0
III. Uncommitted Loan Resources (II. - Ia.)	15.7	21.9



Rates	Percent
1 SDR = USD	1.39818
SDR Interest Rate	0.050
Adjusted Rate of Charge	1.050
Adjusted Rate of Remuneration	0.050



1/ -- Indicates zero value, zero indicates amounts less than SDR 0.05 billion. Totals may not add due to rounding.

2/ Excludes 20% prudential balance and borrowing lines of participants/members that are currently not in the FTP; for the NAB, also excludes borrowing lines of participants that have not yet adhered to the NAB as well as any outstanding NAB claims and undrawn committed resources under current NAB-eligible arrangements.

3/ Undrawn balances under arrangements treated as precautionary by the authorities.

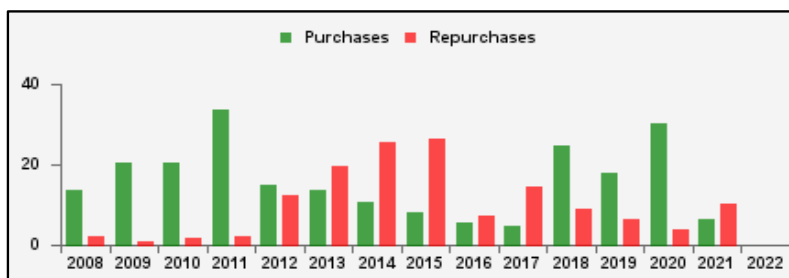
4/ In the event of activation of the NAB and/or bilateral borrowed resources, the FCC is modified to take account of additional usable resources under these arrangements (which exclude a prudential balance and non-FTP members).

Table 2a. Use of GRA Resources 1/

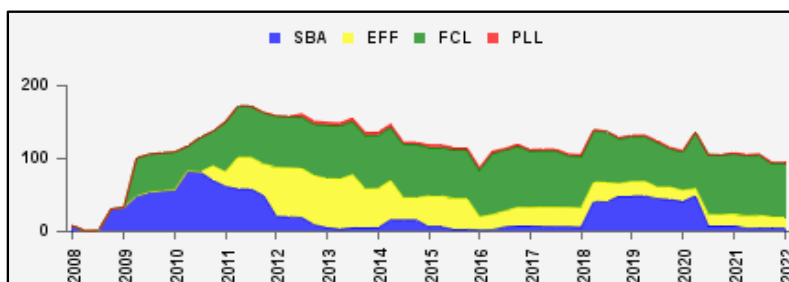
as of January 07, 2022

(In billions of SDRs, unless indicated otherwise)

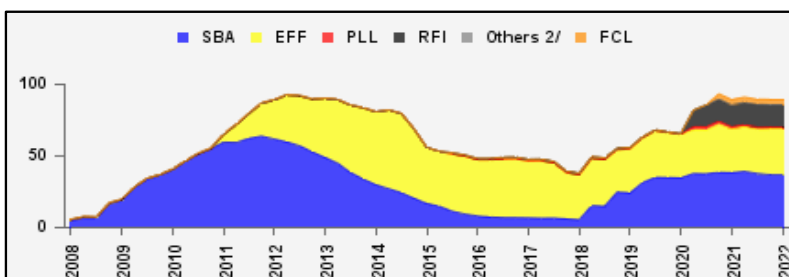
GRA Lending (Calendar year to date)	SDR	USD
Purchases	--	--
Financed by Quota Resources	--	--
Financed by Borrowings	--	--
Repurchases	--	--
Commitments Approved	--	--



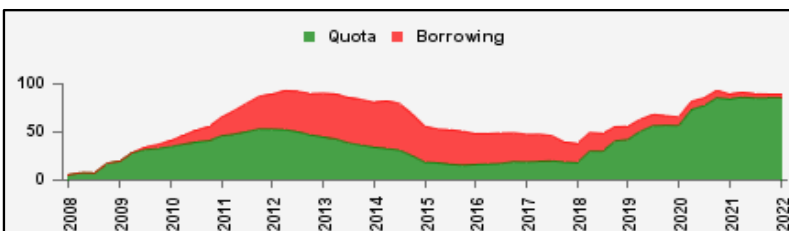
Commitments Under Current GRA Arrangements	Number of	SDR	USD
Standby Arrangement (SBA)	4	4.6	6.4
Extended Fund Facility (EFF)	13	15.2	21.3
Flexible Credit Line (FCL)	4	73.4	102.6
Precautionary and Liquidity Line (PLL)	1	1.9	2.6
Short-Term Liquidity Line (SLL)	--	--	--
Total Current Arrangements	22	95.1	132.9



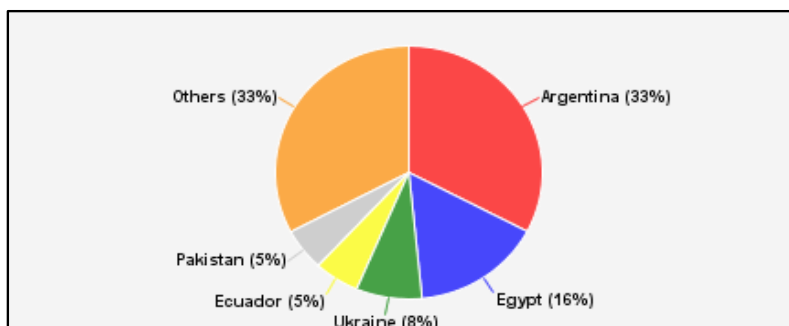
Credit Outstanding by Facility	SDR	USD
Standby Arrangement (SBA)	36.9	51.5
Extended Fund Facility (EFF)	31.9	44.6
Flexible Credit Line (FCL)	3.8	5.2
Precautionary and Liquidity Line (PLL)	1.5	2.1
Short-Term Liquidity Line (SLL)	--	--
Rapid Financing Instrument (RFI)	15.5	21.7
Others 2/	--	--
Total Credit Outstanding	89.5	125.1



Credit Outstanding by Financing Sources	SDR	USD
Financed by Quota Resources	85.2	119.2
Financed by Borrowings	4.2	5.9
Total Credit Outstanding	89.5	125.1



Largest 5 Exposures 3/	Credit Outstanding	
	SDR	As a % of quota
Argentina	29.3	918
Egypt	14.1	691
Ukraine	7.1	354
Ecuador	4.9	701
Pakistan	4.8	237



1/ -- Indicates zero value, zero indicates amounts less than SDR 0.05 billion. Totals may not add due to rounding.

2/ Includes outstanding credit under the former Compensatory Financing Facility; for the chart also includes outstanding credit under the former Emergency Post Conflict and Natural Disaster Assistance policy.

3/ Members with current arrangements are bolded.

Table 2b. Current Financial Arrangements (GRA)

as of January 07, 2022
(In millions of SDRs, unless indicated otherwise) 1/

Member	Amount Committed	Amount Undrawn	Amount Drawn	Credit Outstanding		Period of Arrangement	
				Amount 2/	As a % of Quota	Effective Date	Expiration Date
Standby Arrangement (4)	4,569	1,969	2,599	8,011			
Armenia	309	77	232	301	234	17-May-19	16-May-22
Honduras	358	77	281	281	113	15-Jul-19	14-Jan-22
Senegal	302	216	86	302	93	07-Jun-21	06-Dec-22
Ukraine	3,600	1,600	2,000	7,126	354	09-Jun-20	30-Jun-22
Extended Fund Facility (13)	15,242	8,455	6,787	13,729			
Barbados	322	17	305	305	323	01-Oct-18	30-Sep-22
Cameroon	322	239	83	83	30	29-Jul-21	28-Jul-24
Costa Rica	1,237	1,031	206	576	156	01-Mar-21	29-Feb-24
Ecuador	4,615	1,207	3,408	4,889	701	30-Sep-20	29-Dec-22
Equatorial Guinea	205	176	29	77	49	18-Dec-19	17-Dec-22
Ethiopia	752	662	90	391	130	20-Dec-19	19-Dec-22
Gabon	389	308	81	666	308	28-Jul-21	27-Jul-24
Jordan	1,070	480	590	1,092	318	25-Mar-20	24-Mar-24
Kenya	1,248	773	475	475	88	02-Apr-21	01-Jun-24
Moldova	267	229	38	244	142	20-Dec-21	19-Apr-25
Pakistan	4,268	2,874	1,394	4,810	237	03-Jul-19	02-Oct-22
Seychelles	74	26	48	82	356	29-Jul-21	28-Mar-24
Suriname	473	433	39	39	31	22-Dec-21	21-Dec-24
Flexible Credit Line (4)	73,368	69,618	3,750	3,750			
Chile 3/	17,443	17,443	--	--	--	29-May-20	28-May-22
Colombia 3/	12,267	8,517	3,750	3,750	183	01-May-20	30-Apr-22
Mexico 3/	35,651	35,651	--	--	--	19-Nov-21	18-Nov-23
Peru 3/	8,007	8,007	--	--	--	28-May-20	27-May-22
Precautionary and Liquidity Line (1)	1,884	1,884	--	377			
Panama 3/	1,884	1,884	--	377	100	19-Jan-21	18-Jan-23
Total Current GRA Arrangements (22)	95,063	81,926	13,137	25,866			
Memorandum Items:							
Credit outstanding from members without current arrangement and outright disbursements.				63,608			
Total Credit Outstanding.				89,475			

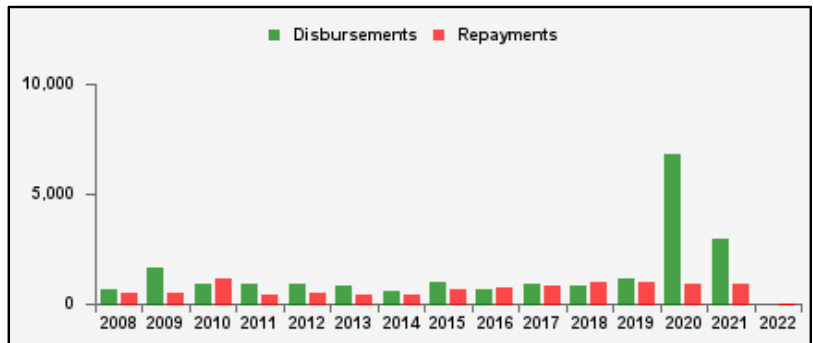
1/ -- Indicates zero value, zero indicates amounts less than SDR 0.5 million. Totals may not add due to rounding.

2/ Includes Credit Outstanding under expired arrangements and outright disbursements.

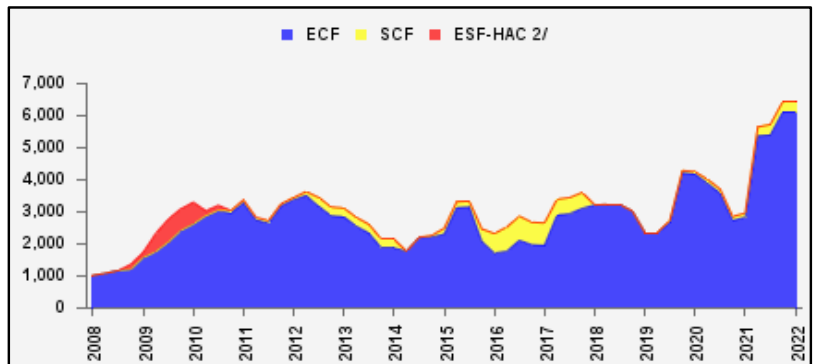
3/ The undrawn commitment of the arrangement is treated as precautionary by the authorities.

Table 3a. Use of Concessional PRGT Resources 1/
as of January 07, 2022
(In millions of SDRs, unless indicated otherwise)

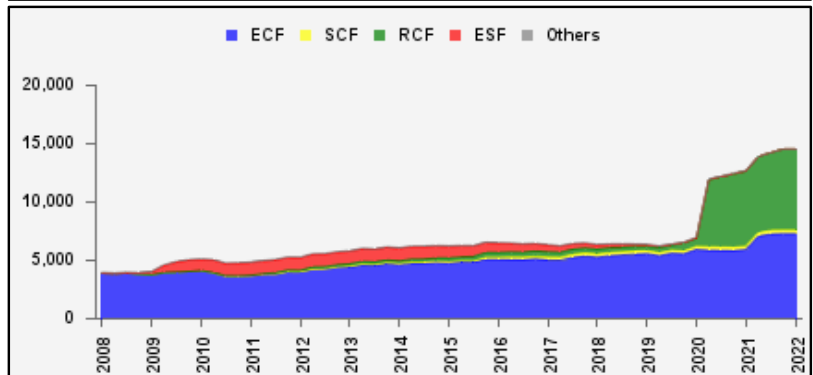
PRGT Lending (Calendar year to date)	SDR	USD
Disbursements	--	--
Repayments	.4	.6
Commitments Approved	--	--



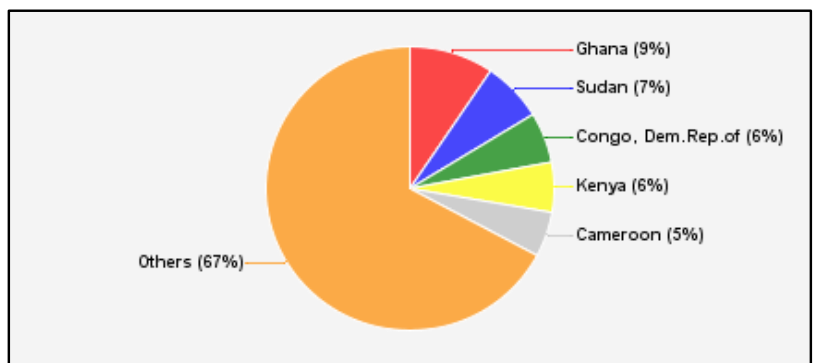
Commitments Under Current PRGT Arrangements	Number of	SDR	USD
Extended Credit Facility (ECF)	17	6,117.0	8,552.7
Standby Credit Facility (SCF)	2	330.0	461.4
Total Current Arrangements	19	6,447.0	9,014.1



Loans Outstanding by Facility	SDR	USD
Extended Credit Facility (ECF)	7,276.7	10,174.1
Standby Credit Facility (SCF)	318.3	445.0
Rapid Credit Facility (RCF)	6,959.4	9,730.6
(former) Exogenous Shocks Facility (ESF)	--	--
Others 3/	--	--
Total Loans Outstanding	14,554.4	20,349.7



Largest 5 Exposures 4/	Loans Outstanding	
	SDR	As a % of quota
Ghana	1,376.2	186
Sudan	991.6	157
Congo, Dem.Rep.of	837.6	79
Kenya	826.4	152
Cameroon	745.2	270



1/ -- Indicates zero value, zero indicates amounts less than SDR 0.05 million. Totals may not add due to rounding.

2/ The last commitment under the old ESF-HAC Facility expired on December 3, 2011.

3/ Includes outstanding and overdue loans under the (former) Structural Adjustment Facility and Trust Fund.

4/ Members with current arrangements are bolded.

Table 3b. Current Financial Arrangements (PRGT)
as of January 07, 2022
(In millions of SDRs, unless indicated otherwise) 1/

Member	Amount Committed	Amount Undrawn	Amount Drawn	Loans Outstanding		Period of Arrangement	
				Amount 2/	As a % of Quota	Effective Date	Expiration Date
Extended Credit Facility (17)	6,117	3,511	2,606	7,312			
Afghanistan	259	74	185	381	118	06-Nov-20	05-May-24
Cameroon	161	120	41	745	270	29-Jul-21	28-Jul-24
Central African Rep.	84	48	36	210	189	20-Dec-19	19-Dec-22
Chad	393	336	56	465	332	10-Dec-21	09-Dec-24
Congo, Dem.Rep.of	1,066	761	305	838	79	15-Jul-21	14-Jul-24
Gambia	55	15	40	73	118	23-Mar-20	22-Jun-23
Kenya	407	195	212	826	152	02-Apr-21	01-Jun-24
Liberia	155	87	68	199	77	11-Dec-19	10-Dec-23
Madagascar	220	171	49	580	237	29-Mar-21	28-Jul-24
Mali	140	60	80	408	219	28-Aug-19	27-Aug-22
Moldova	133	114	19	124	72	20-Dec-21	19-Apr-25
Niger	197	158	39	302	229	08-Dec-21	07-Dec-24
Sao Tome-Principe	15	6	9	22	148	02-Oct-19	01-Feb-23
Sierra Leone	124	47	78	387	187	30-Nov-18	29-Jun-23
Somalia	253	35	218	218	133	25-Mar-20	24-Mar-23
Sudan	1,733	742	992	992	157	29-Jun-21	28-Sep-24
Uganda	722	542	181	542	150	28-Jun-21	27-Jun-24
Standby Credit Facility (2)	330	144	186	294			
Honduras	179	36	143	143	57	15-Jul-19	14-Jan-22
Senegal	151	108	43	151	47	07-Jun-21	06-Dec-22
Total Current PRGT Arrangements (19)	6,447	3,654	2,793	7,606			
Memorandum Items:							
Credit outstanding from members without current arrangement and outright loans.				6,948			
Total Credit Outstanding.				14,554			

1/ -- Indicates zero value, zero indicates amounts less than SDR 0.5 million. Totals may not add due to rounding.

2/ Includes Loans Outstanding under expired arrangements and outright loans.