



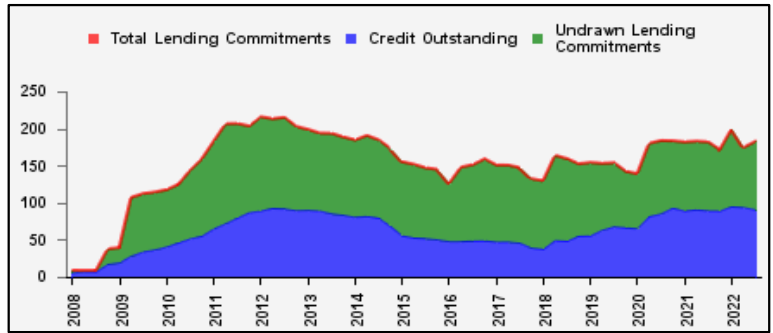
Weekly Report on Key Financial Statistics

Table 1. Key Indicators 1/

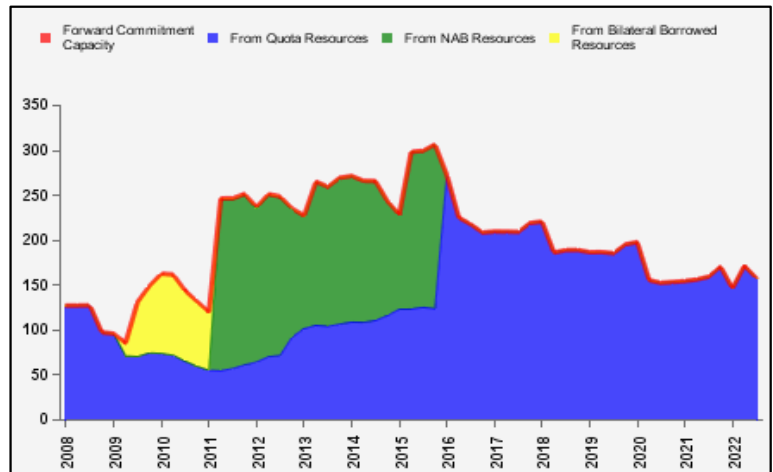
as of September 23, 2022

(In billions of SDRs, unless indicated otherwise)

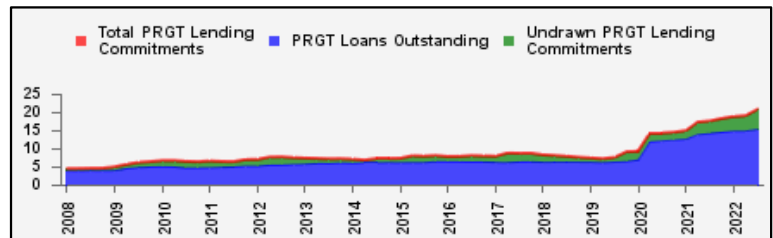
GRA Lending and Resources	SDR	USD
I. Total Lending Commitments, of which:	182.6	233.7
Undrawn Lending Commitments	91.3	116.9
Credit Outstanding	91.2	116.8
II. Forward Commitment Capacity (FCC)	158.0	202.3
III. Unactivated Borrowed Resources, of which: 2/	381.3	488.1
NAB	273.8	350.4
Bilateral Borrowing Agreements	107.6	137.7
IV. Total GRA Resources (I. + II. + III.)	721.9	924.0



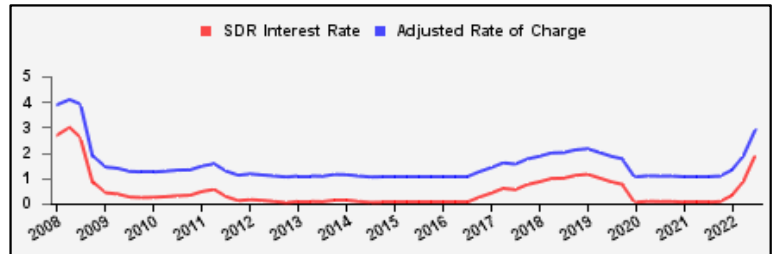
Forward Commitment Capacity (FCC)	SDR	USD
I. Usable resources (a) + (b)	307.6	393.7
(a) Fund quota resources	307.6	393.7
(b) Fund borrowed resources	--	--
II. Undrawn balances under GRA lending commitments	91.3	116.9
Precautionary 3/	62.9	80.5
Non-precautionary	28.5	36.5
III. Uncommitted usable resources (I - II)	216.3	276.8
IV. Repurchases one-year forward	20.3	26.0
V. Repayments of borrowed resources one-year forward	1.4	1.7
VI. Prudential balance	77.2	98.8
VII. Forward commitment capacity (III + IV - V - VI) 4/	158.0	202.3
(a) From Quota resources	158.0	202.3
(b) From NAB resources	--	--
(c) From Bilateral Borrowed resources	--	--



PRGT Lending and Resources	SDR	USD
I. Total Lending Commitments, of which:	20.7	26.5
Ia. Undrawn lending commitments	5.3	6.8
Ib. Loans Outstanding	15.4	19.7
II. Undrawn Loan Resources	22.7	29.0
III. Uncommitted Loan Resources (II. - Ia.)	17.4	22.2



Rates	Percent
1 SDR = USD	1.27995
SDR Interest Rate	1.932
Adjusted Rate of Charge	2.932
Adjusted Rate of Remuneration	1.932



1/ Figures highlighted in blue changed from previous issued report; -- Indicates zero value, zero indicates amounts less than SDR 0.05 billion. Totals may not add due to rounding.

2/ Excludes 20% prudential balance and borrowing lines of participants/members that are currently not in the FTP; for the NAB, also excludes borrowing lines of participants that have not yet adhered to the NAB as well as any outstanding NAB claims and undrawn committed resources under current NAB-eligible arrangements.

3/ Undrawn balances under arrangements treated as precautionary by the authorities.

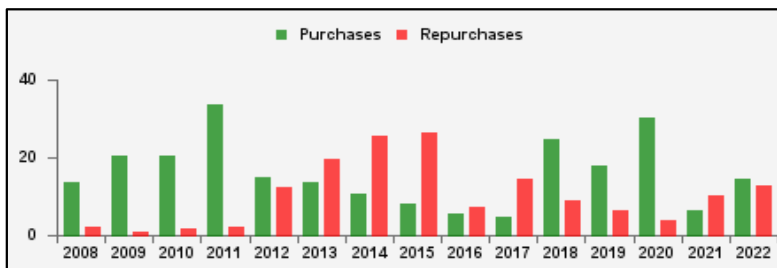
4/ In the event of activation of the NAB and/or bilateral borrowed resources, the FCC is modified to take account of additional usable resources under these arrangements (which exclude a prudential balance and non-FTP members).

Table 2a. Use of GRA Resources 1/

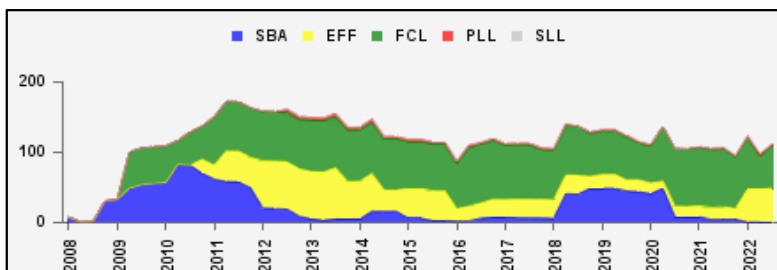
as of September 23, 2022

(In billions of SDRs, unless indicated otherwise)

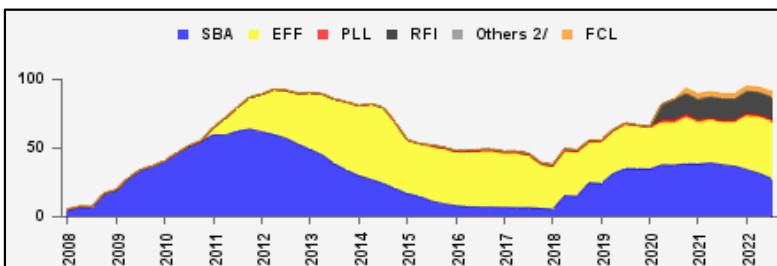
GRA Lending (Calendar year to date)	SDR	USD
Purchases	14.5	18.6
Financed by Quota Resources	14.5	18.6
Financed by Borrowings	--	--
Repurchases	12.7	16.3
Commitments Approved	62.1	79.5



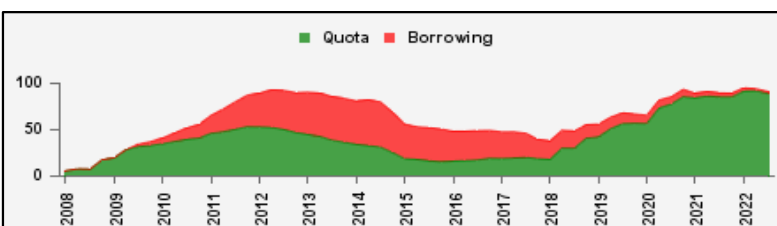
Commitments Under Current GRA Arrangements	Number of	SDR	USD
Standby Arrangement (SBA)	2	0.6	0.8
Extended Fund Facility (EFF)	14	48.1	61.5
Flexible Credit Line (FCL)	4	60.8	77.8
Precautionary and Liquidity Line (PLL)	1	1.9	2.4
Short-Term Liquidity Line (SLL)	--	--	--
Total Current Arrangements	21	111.3	142.5



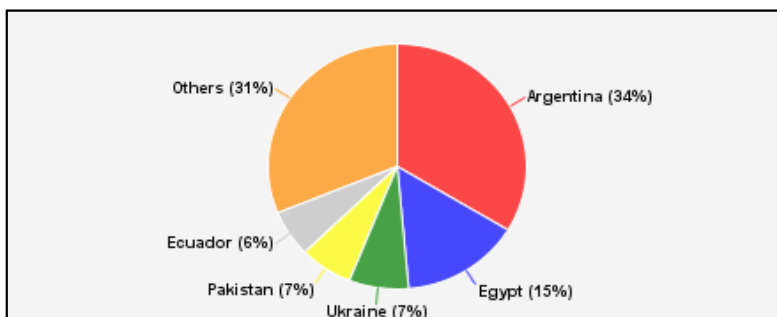
Credit Outstanding by Facility	SDR	USD
Standby Arrangement (SBA)	28.0	35.8
Extended Fund Facility (EFF)	41.5	53.1
Flexible Credit Line (FCL)	3.8	4.8
Precautionary and Liquidity Line (PLL)	1.5	1.9
Short-Term Liquidity Line (SLL)	--	--
Rapid Financing Instrument (RFI)	16.5	21.1
Others 2/	--	--
Total Credit Outstanding	91.2	116.8



Credit Outstanding by Financing Sources	SDR	USD
Financed by Quota Resources	88.9	113.8
Financed by Borrowings	2.3	3.0
Total Credit Outstanding	91.2	116.8



Largest 5 Exposures 3/	Credit Outstanding	
	SDR	As a % of quota
Argentina	30.7	963
Egypt	13.6	669
Ukraine	6.8	337
Pakistan	6.1	298
Ecuador	5.6	803



1/ Figures highlighted in blue changed from previous issued report; -- Indicates zero value, zero indicates amounts less than SDR 0.05 billion. Totals may not add due to rounding.

2/ Includes outstanding credit under the former Compensatory Financing Facility; for the chart also includes outstanding credit under the former Emergency Post Conflict and Natural Disaster Assistance policy.

3/ Members with current arrangements are bolded.

Table 2b. Current Financial Arrangements (GRA)

as of September 23, 2022

(In millions of SDRs, unless indicated otherwise) 1/

Member	Amount Committed	Amount Undrawn	Amount Drawn	Credit Outstanding		Period of Arrangement	
				Amount 2/	As a % of Quota	Effective Date	Expiration Date
Standby Arrangement (2)	599	318	280	973			
Georgia 3/	210	210	--	477	226	15-Jun-22	14-Jun-25
Senegal	388	108	280	496	153	07-Jun-21	06-Dec-22
Extended Fund Facility (14)	48,082	28,381	19,702	46,999			
Argentina	31,914	21,914	10,000	30,705	963	25-Mar-22	24-Sep-24
Benin	323	251	72	155	125	08-Jul-22	07-Jan-26
Cameroon	322	147	175	175	63	29-Jul-21	28-Jul-24
Costa Rica	1,237	825	413	782	212	01-Mar-21	31-Jul-24
Ecuador	4,615	497	4,118	5,599	803	30-Sep-20	29-Dec-22
Equatorial Guinea	205	176	29	77	49	18-Dec-19	17-Dec-22
Ethiopia	752	662	90	391	130	20-Dec-19	19-Dec-22
Gabon	389	192	197	770	357	28-Jul-21	27-Jul-24
Jordan	1,146	419	727	1,216	354	25-Mar-20	24-Mar-24
Kenya	1,248	632	616	616	114	02-Apr-21	01-Jun-24
Moldova	396	304	93	290	168	20-Dec-21	19-Apr-25
Pakistan	4,988	1,950	3,038	6,058	298	03-Jul-19	30-Jun-23
Seychelles	74	20	55	86	374	29-Jul-21	28-Mar-24
Suriname	473	394	79	79	61	22-Dec-21	21-Dec-24
Flexible Credit Line (4)	60,764	60,764	--	3,750			
Chile 3/	13,954	13,954	--	--	--	29-Aug-22	28-Aug-24
Colombia 3/	7,156	7,156	--	3,750	183	29-Apr-22	28-Apr-24
Mexico 3/	35,651	35,651	--	--	--	19-Nov-21	18-Nov-23
Peru 3/	4,004	4,004	--	--	--	27-May-22	26-May-24
Precautionary and Liquidity Line (1)	1,884	1,884	--	377			
Panama 3/	1,884	1,884	--	377	100	19-Jan-21	18-Jan-23
Total Current GRA Arrangements (21)	111,329	91,347	19,982	52,098			
Memorandum Items:							
Credit outstanding from members without current arrangement and outright disbursements.				39,143			
Total Credit Outstanding.				91,242			

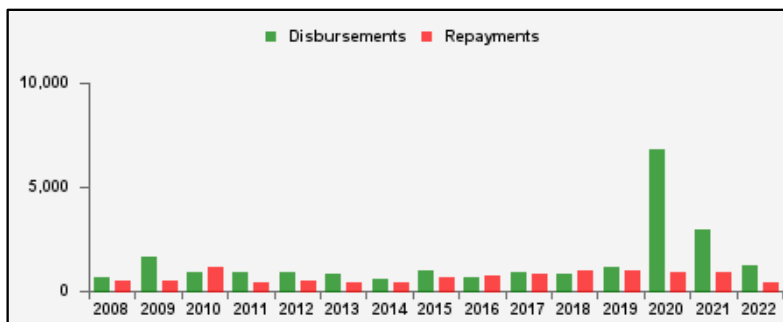
1/ -- Indicates zero value, zero indicates amounts less than SDR 0.5 million. Totals may not add due to rounding.

2/ Includes Credit Outstanding under expired arrangements and outright disbursements.

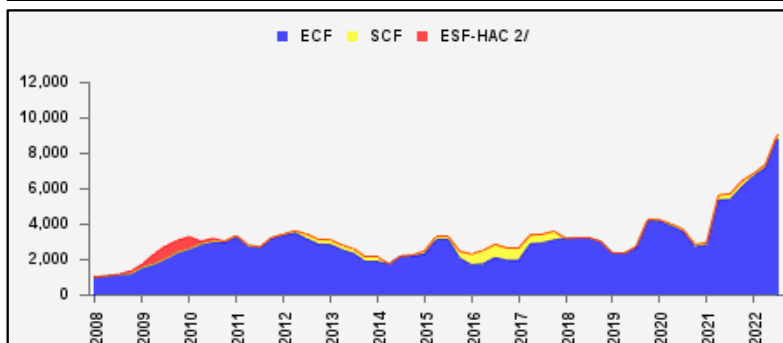
3/ The undrawn commitment of the arrangement is treated as precautionary by the authorities.

Table 3a. Use of Concessional PRGT Resources 1/
as of September 23, 2022
(In millions of SDRs, unless indicated otherwise)

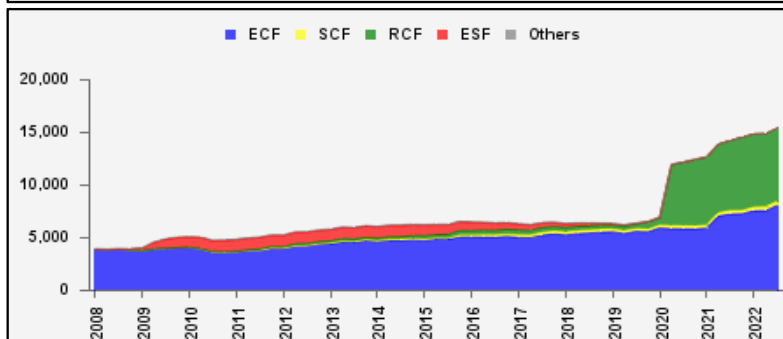
PRGT Lending (Calendar year to date)	SDR	USD
Disbursements	1,251.8	1,602.3
Repayments	411.8	527.1
Commitments Approved	3,042.2	3,893.9



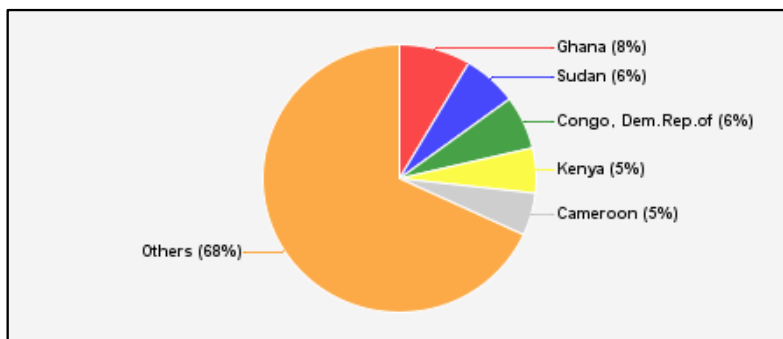
Commitments Under Current PRGT Arrangements	Number of	SDR	USD
Extended Credit Facility (ECF)	22	8,885.7	11,373.2
Standby Credit Facility (SCF)	1	194.2	248.5
Total Current Arrangements	23	9,079.8	11,621.7



Loans Outstanding by Facility	SDR	USD
Extended Credit Facility (ECF)	8,067.5	10,326.0
Standby Credit Facility (SCF)	389.9	499.0
Rapid Credit Facility (RCF)	6,937.4	8,879.5
(former) Exogenous Shocks Facility (ESF)	--	--
Others 3/	--	--
Total Loans Outstanding	15,394.8	19,704.6



Largest 5 Exposures 4/	Loans Outstanding	
	SDR	As a % of quota
Ghana	1,302.6	177
Sudan	991.6	157
Congo, Dem.Rep.of	989.9	93
Kenya	835.6	154
Cameroon	791.2	287



1/ Figures highlighted in blue changed from previous issued report; -- Indicates zero value, zero indicates amounts less than SDR 0.05 million. Totals may not add due to rounding.

2/ The last commitment under the old ESF-HAC Facility expired on December 3, 2011.

3/ Includes outstanding and overdue loans under the (former) Structural Adjustment Facility and Trust Fund.

4/ Members with current arrangements are bolded.

Table 3b. Current Financial Arrangements (PRGT)

as of September 23, 2022

(In millions of SDRs, unless indicated otherwise) 1/

Member	Amount Committed	Amount Undrawn	Amount Drawn	Loans Outstanding		Period of Arrangement	
				Amount 2/	As a % of Quota	Effective Date	Expiration Date
Extended Credit Facility (22)	8,886	5,247	3,638	8,962			
Afghanistan	259	74	185	378	117	06-Nov-20	05-May-24
Benin	161	125	36	272	220	08-Jul-22	07-Jan-26
Cabo Verde	45	34	11	35	148	15-Jun-22	14-Jun-25
Cameroon	161	74	87	791	287	29-Jul-21	28-Jul-24
Chad	393	336	56	457	326	10-Dec-21	09-Dec-24
Congo, Dem.Rep.of	1,066	609	457	990	93	15-Jul-21	14-Jul-24
Congo, Rep. of	324	194	130	162	100	21-Jan-22	20-Jan-25
Gambia	55	10	45	77	124	23-Mar-20	22-Jun-23
Kenya	407	157	250	836	154	02-Apr-21	01-Jun-24
Liberia	155	70	85	206	80	11-Dec-19	10-Dec-23
Madagascar	220	98	122	644	264	29-Mar-21	28-Jul-24
Moldova	198	105	93	194	113	20-Dec-21	19-Apr-25
Mozambique	341	273	68	409	180	09-May-22	08-May-25
Nepal	282	204	79	257	164	12-Jan-22	11-Mar-25
Niger	197	118	79	334	254	08-Dec-21	07-Dec-24
Sao Tome-Principe	15	2	13	25	172	02-Oct-19	01-Feb-23
Sierra Leone	124	31	93	386	186	30-Nov-18	29-Jun-23
Somalia	253	21	232	232	142	25-Mar-20	24-Dec-23
Sudan	1,733	742	992	992	157	29-Jun-21	28-Sep-24
Tanzania	796	680	115	513	129	18-Jul-22	17-Nov-25
Uganda	722	451	271	632	175	28-Jun-21	27-Jun-24
Zambia	978	838	140	140	14	31-Aug-22	30-Oct-25
Standby Credit Facility (1)	194	54	140	248			
Senegal	194	54	140	248	77	07-Jun-21	06-Dec-22
Total Current PRGT Arrangements (23)	9,080	5,301	3,779	9,210			
Memorandum Items:							
Credit outstanding from members without current arrangement and outright loans.				6,185			
Total Credit Outstanding.				15,395			

1/ -- Indicates zero value, zero indicates amounts less than SDR 0.5 million. Totals may not add due to rounding.

2/ Includes Loans Outstanding under expired arrangements and outright loans.