

Seychelles: First Review Under the Extended Arrangement, Request for Modification of Performance Criteria, and Financing Assurances Review—Staff Report; Staff Supplement; and Press Release

In the context of the First Review Under the Extended Arrangement, request for Modification of Performance Criteria, and Financing Assurances Review with Seychelles, the following documents have been released and are included in this package:

- The staff report for the First Review Under the Extended Arrangement, Request for Modification of Performance Criteria, and Financing Assurances Review, prepared by a staff team of the IMF, following discussions that ended on May 17, 2010, with the officials of Seychelles on economic developments and policies. Based on information available at the time of these discussions, the staff report was completed on June 15, 2010. The views expressed in the staff report are those of the staff team and do not necessarily reflect the views of the Executive Board of the IMF.
- A Press Release summarizing the views of the Executive Board.

The documents listed below have been or will be separately released.

Letter of Intent sent to the IMF by the authorities of Seychelles*
Supplementary Memorandum of Economic, Financial and Structural Reform Policies by the authorities of Seychelles *
Technical Memorandum of Understanding*

*Also included in Staff Report

The policy of publication of staff reports and other documents allows for the deletion of market-sensitive information.

Copies of this report are available to the public from

International Monetary Fund • Publication Services
700 19th Street, N.W. • Washington, D.C. 20431
Telephone: (202) 623-7430 • Telefax: (202) 623-7201
E-mail: publications@imf.org • Internet: <http://www.imf.org>

**International Monetary Fund
Washington, D.C.**

INTERNATIONAL MONETARY FUND

SEYCHELLES

First Review Under the Extended Arrangement, Request for Modification of Performance Criteria, and Financing Assurances Review

Prepared by the African Department
(In consultation with other Departments)

Approved by Roger Nord and Aasim Husain

June 15, 2010

A three-year arrangement under the Extended Fund Facility (EFF) for 225 percent of quota (SDR 19.8 million) was approved by the Executive Board on December 18, 2009.

SDR 3.08 million (35 percent of quota) has been disbursed, and SDR 2.2 million (25 percent of quota) is available upon completion of the first EFF review.

The program is on track. All quantitative performance criteria (PCs) at end-March 2010 were met and the two structural benchmarks at end-March and end-April 2010 were met.

Policy discussions were held in Victoria May 4–17, 2010. Staff met with President James Michel, Minister of Finance Danny Faure, Governor Pierre Laporte of the Central Bank of Seychelles (CBS), other senior government officials, and representatives of parliament, the private sector, civil society, and the diplomatic community. The mission comprised Jean Le Dem (head), Marie-Therese Trasino, Nikoloz Gigineishvili (all AFR), and Nkunde Mwase (SPR).

In the attached letter from President Michel and accompanying Supplementary Memorandum of Economic and Financial Policies (SMEFP) for 2010–12, the authorities request completion of the first program review under the EFF. The program has been updated in part to reflect better-than-expected government revenue outcome in the first quarter of 2010. New fiscal targets lock in half of projected additional revenue, while allowing additional spending in priority areas. The authorities are requesting modification of the quantitative performance criteria on the fiscal primary balance.

The authorities have implemented most of the recommendation of the 2008 safeguards assessment. The published 2009 CBS financial statements were prepared and audited in accordance with international standards. The update safeguards assessment, which is substantially complete, has found an improved safeguards framework at the CBS. Some vulnerabilities remain, however, that the CBS plans to address expeditiously.

Contents	Page
Executive Summary	3
I. Recent Developments and Performance Under the Program	4
II. Program for the Rest of 2010	6
A. Macroeconomic Framework	6
B. Fiscal Policy	6
C. Monetary, Exchange Rate, and Financial Sector Policies.....	7
D. Public Enterprise Sector Reforms	9
III. Program Financing, Design, and Risks.....	9
IV. Staff Appraisal	10
 Tables	
1. Selected Economic and Financial Indicators, 2007–12	12
2. Balance of Payments, 2008–12.....	13
3. Consolidated Government Operations, 2008–12	14
4. Monetary Survey and Central Bank Accounts, 2008–10.....	16
5. Financial Soundness Indicators for the Banking Sector, 2007–10	17
6. Fund Disbursements and Timing of Reviews Under the Proposed Three-Year EFF, 2009–12.....	18
7. Structural Benchmarks, 2009–10.....	19
 Figures	
1. Macroeconomic Developments	20
2. Fiscal Sector.....	21
 Appendices	
I. Letter of Intent.....	22
Attachment I. Supplementary Memorandum of Economic, Financial and Structural Reform Policies for 2010–12	24
Attachment II. Technical Memorandum of Understanding.....	42

EXECUTIVE SUMMARY

Macroeconomic performance under the program has been good. The Seychelles economy has proved remarkably resilient to the recent global crisis. Real GDP grew by 0.7 percent in 2009 and is projected to recover further to 4 percent in 2010. Low inflation, a stable exchange rate and a steady rise in reserves, have boosted domestic confidence, further entrenching hard-won macroeconomic stabilization gains. All quantitative performance criteria at end-March 2010 were met.

The fiscal policy stance continues to be appropriate, facilitating a reduction in public debt. Revenue projections for 2010 were revised upwards by SR 124 million or 1.1 percent of GDP, and the primary balance target for 2010 was raised by SR 62 million to 7.4 percent of GDP, saving half the projected additional revenue. With the phased release of the contingency, additional capital expenditure is being directed towards much-needed infrastructural upgrading. Tax reforms are progressing: revised business tax legislation was enacted in January 2010, reducing rates and broadening the tax base; the sales tax base was expanded, cascading effects were reduced and concessional rates are being phased out. The introduction of a withholding-based personal income tax and VAT are on track for, respectively, July 2010 and January 2012.

Monetary policy is suitably designed to maintain inflation in low single digits. Within its operational framework of reserve money targeting, the central bank will continue to rely on repurchase agreements and deposit and credit auctions to guide short-term interest rates. However, the monetary transmission mechanism remains challenged by banks' excess reserves. Changes to the T-bill auction calendar are planned to enhance banks' ability to manage liquidity and strengthen the interbank market.

Structural reforms have progressed well, and program benchmarks were implemented as scheduled. Although quasi-fiscal risks stemming from public enterprises are currently contained, the government has commissioned a study of the optimal tariff policy, subjected the public utility to an independent operational audit, and engaged an international consulting firm to carry out a strategic assessment of the national airline. Efforts to enhance transparency and governance in state-owned entities are ongoing and their financial audits are subject to parliamentary oversight.

Good progress has been achieved in external public debt restructuring. The private debt exchange offer was successfully closed in February 2010, and the authorities are continuing good faith negotiations with the remaining non-Paris Club bilateral and other creditors. **The program is financed for 2010.**

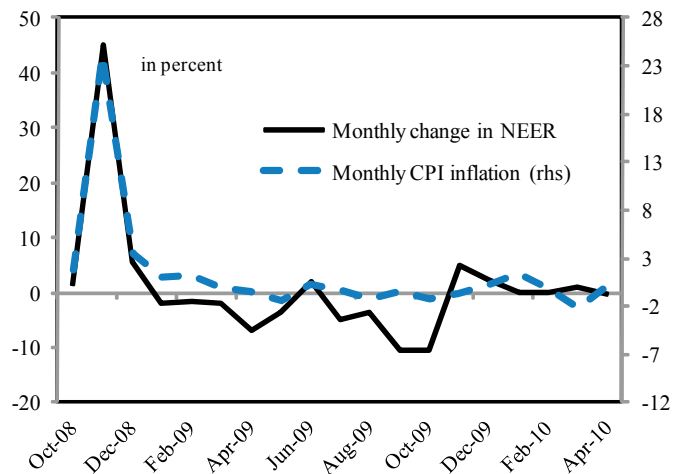
In light of strong performance through end-April 2010, compliance with the performance criteria, consistency with the Fund's Lending into Arrears policy, and satisfactory progress with the update safeguards assessment, staff recommends completion of the first EFF arrangement program and financing assurances reviews.

I. RECENT DEVELOPMENTS AND PERFORMANCE UNDER THE PROGRAM

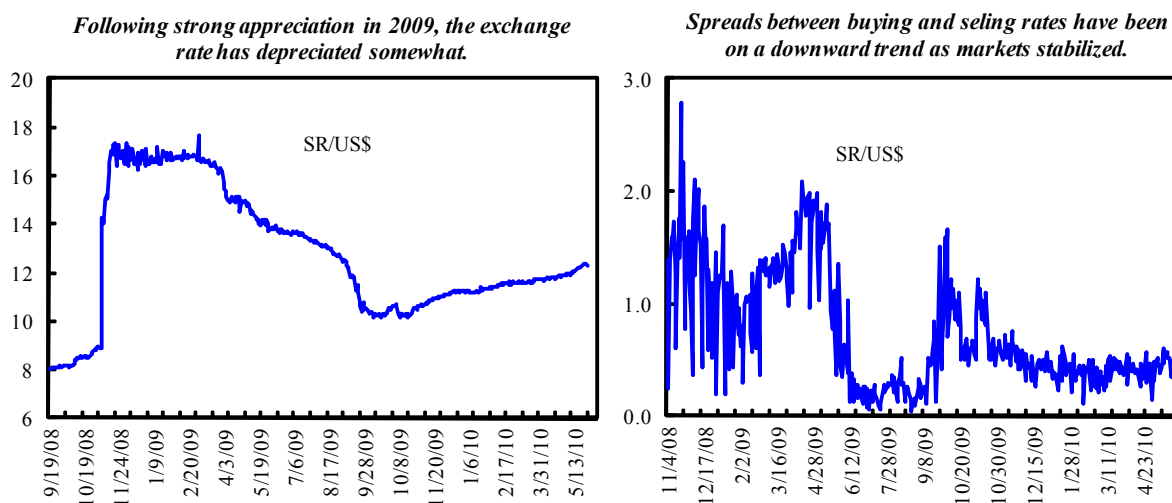
1. Seychelles has weathered both the 2008 debt crisis and the 2009 global crisis.

Aggressive discounting in the tourism industry, accounting for a quarter of economic activity, helped real GDP growth recover to 0.7 percent in 2009, a significant turnaround from the 7.6 percent contraction expected at the onset of the program. The current account deficit narrowed by a third to reach 35 percent of GDP in 2009. Imports contracted almost twice as fast as exports because of reduced domestic demand and a sharp decline in foreign direct investment (FDI) inflows from their 2008 peak.

2. **Macroeconomic stabilization appears to be taking hold on the back of rebounding domestic confidence.** Higher visitor arrivals and a longer average stay through April 2010, by 13 percent and 5 percent respectively, point to a further recovery in activity. The rupee recovered strongly in 2009 from its overshooting following the 2008 float. Since October 2009, the nominal effective exchange rate has roughly stabilized, the depreciation against the US dollar being offset by the appreciation against the euro and the British pound. After the exchange rate pass-through triggered a rapid disinflation in 2009, monthly inflation gradually returned to positive territory, although in May 2010 consumer prices were 3.6 percent below their level a year ago. Gross reserves increased to USD 183 million, or 1.9 months of prospective imports in May 2010.



Source: Seychelles authorities and Fund staff estimates.



Source: Seychelles authorities and Fund staff estimates

3. **The fiscal policy stance is in line with the targeted public debt reduction.** The primary surplus for the first quarter of 2010 exceeded the program target by 0.3 percentage points of GDP. Business tax receipts were driven by stronger-than-expected growth in 2009 while the rupee's depreciation against the dollar boosted trade and sales taxes on imports. On the expenditure side, delays in implementing the new wage grid and scheme of service for health and education and stricter controls on spending such as social programs led to significant savings. Domestic interest payments were, however, larger than anticipated due to the unforeseen upfront cost of converting 20-year government bonds into treasury bills.

4. **Monetary policy has been appropriate.** Targets for reserve money and net international reserves for March 2010 were met with margins. Interest rates on three-month government securities declined to 2.4 percent in May 2010. The rapid reduction of domestic debt left commercial banks with significant excess reserves despite increased central bank sterilization. Relatively low central bank rates, ample liquidity conditions, and signs of economic recovery did not boost credit growth significantly, partly reflecting high lending rates and limited competition among banks.

Main Quantitative Performance Criteria Under the EFF, December 2009 - March 2010
(end-of-period)

	2009		2010		
	December		March		
	Program	Adjusted Actual	Program	Adjusted	Actual
Net international reserves of the CBS, millions of U.S. dollars (floor)	130	138 153	133	137	192
Reserve money, millions of Seychelles rupees (ceiling)	1,480	... 1,296	1,537	...	1,424
Fiscal primary balance, millions of Seychelles rupees (cumulative floor)	1,375	... 1,586	261	...	298

5. **The banking system is well capitalized and profitable (Table 5).** Although credit quality worsened marginally, banks remain fully provisioned under current standards. They

have three years to comply with the doubling of the minimum capital requirement (from SR 10 million to SR 20 million) of December 29, 2009.

6. **Structural reforms have progressed satisfactorily (Table 8).** Following their Cabinet approval on March 17 (end-March benchmark), the customs reform strategy and implementation plan are at the implementation stage, although submission of the new Customs Management Act to parliament (end-June benchmark) is delayed to end-September 2010 since more time was required to adjust the initial draft to the needs of a small island economy. General government finance statistics were published on April 23 (end-April benchmark). The rest of the structural reform agenda was implemented as scheduled, except for delays in initiating the privatization of state-owned banks.

7. **Public external debt restructuring has advanced further.** To date, the authorities reached agreements with external creditors covering around 85 percent of the debt eligible for restructuring (SMEFP ¶37). Reflecting recent agreements, the external debt stock declined from 92 percent of GDP in 2009 to 54 percent in March 2010.¹ Since the successful completion of the commercial debt exchange offer in February 2010, discussions with non-Paris Club bilateral and commercial creditors have also progressed. All but one bilateral creditor and one commercial creditor have either signed agreements or otherwise indicated their willingness to accept terms at least as concessional as those of the Paris Club. Discussions with remaining creditors are ongoing.

II. PROGRAM FOR THE REST OF 2010

A. Macroeconomic Framework

8. **The outlook is favorable.** With better than expected growth in 2009, the projected real GDP growth rates of 4 percent for 2010 and 5 percent for 2011 and 2012 are within reach. End-year inflation is expected to be contained to low single digits. The current account deficit will widen to 39 percent of GDP in 2010 owing to the recovery of domestic demand, resumption of FDI, and rising costs of insurance premiums because of the piracy threat, but will gradually narrow thereafter as exports of tourism services will benefit from the global economic recovery and additional hotel accommodations. Official external reserves are projected to reach 2.2 months of imports at end-2010.

B. Fiscal Policy

9. **Higher revenue projections ensure the targeted public debt reduction and create space for financing additional priority expenditure.** Revenue projections for 2010 were

¹ This represents a stronger reduction in the external debt stock than projected in the most recent Debt Sustainability Analysis (Country Report No. 10/3, January 5, 2010) mainly on account of the cancellation of a large late payment penalty related to the Eurobond debt exchange.

revised upwards by SR 124 million or 1.1 percent of GDP as a result of the strong first quarter outcome and higher dividends expected from public enterprises. About half the additional revenue is to be saved, leading to an upwards revision of the 2010 primary balance target by SR 62 million to 7.4 percent of GDP. Savings will also be generated from faster reimbursement of government loans by two public enterprises. Additional budget appropriations mainly will finance higher-than-anticipated costs related to the introduction of a new wage grid and scheme of service for health and education (designed to reverse the loss of qualified professionals to the private sector) and termination fees for outsourced noncore workers in budget-dependent agencies. Revenue overperformance allows for the phased release of the contingency, leading to an increase in expenditure on much-needed infrastructure investment (SMEFP ¶12).

	Revisions to Fiscal Targets			
	2010		Diff.	
	Prog.	Proj.	SR m%	GDP ¹
<i>(Millions of Seychelles rupees)</i>				
Total revenue and grants	3,723	3,866	143	1.3
Total revenue	3,390	3,514	124	1.1
Tax	3,067	3,090	23	0.2
Nontax	323	424	101	0.9
External grants	333	352	19	0.2
Primary expenditure and net lending	2,952	3,033	81	0.7
Primary current expenditure	2,415	2,489	74	0.7
Capital expenditure ²	867	893	26	0.2
Net lending	-330	-349	-19	-0.2
Primary balance	771	833	62	0.6
% of GDP	7.0	7.4
Nominal GDP	11,057	11,206

Source: Ministry of Finance and IMF estimates and projections.

¹ As a share of projected GDP

² Includes the release of the contingency

10. **Tax reforms are on track** (SMEFP ¶13). Revised business tax legislation was enacted in January 2010, reducing rates and broadening the tax base. The Goods and Services Tax (GST) base was expanded, cascading effects were eliminated, and concessional rates are being phased out. The introduction of a withholding-based personal income tax to replace the current system of social security contributions is on track for July 2010. The authorities have hired an external expert to help them replace the current multiple-rate GST with VAT in 2012; the EU will help finance technical assistance during the implementation phase.

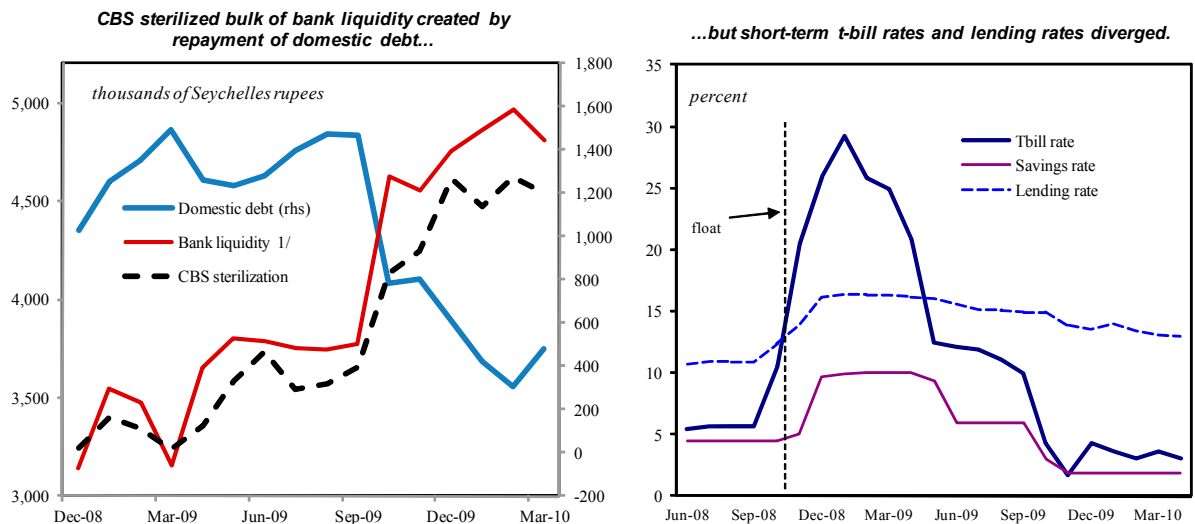
11. **Public financial management will be further improved.** Expenditure monitoring, facilitated by the Treasury Single Account set up in late 2009, will be further strengthened with ongoing tightening of internal controls and the new chart of accounts planned for 2011 (SMEFP ¶16). Starting with the 2011 cycle, the government is also reinforcing budget processes (¶17) and preparing comprehensive budget documentation (¶18). Comprehensive financial and management assessments of the Social Security and Pension Funds will be undertaken with the assistance of the World Bank.

C. Monetary, Exchange Rate, and Financial Sector Policies

12. **A prudent monetary policy, based on reserve money targeting, remains key to anchoring inflation expectations.** As monthly inflation turns positive (reflecting the recent

exchange rate depreciation against the dollar), reserve money targets continue to be appropriate. The CBS will continue to rely on repurchase agreements and deposit and credit auctions to achieve its targets and guide short-term rates.

13. **The authorities will pursue efforts to strengthen liquidity management.** Excess reserves of banks (on average 7 percent of rupee deposits over the last six months, and 3 percent of GDP) may undermine interbank market development and shift banks' focus on foreign exchange transactions. Last-minute changes in the volume of T-bill auctions create uncertainty, further complicating banks' ability to manage liquidity and weakening interest rate pass-through. To address this, the T-bill auction calendar will be announced weekly for the next four weeks, with information on volumes disclosed three days before each auction (SMEFP ¶19). The CBS will also improve liquidity forecasting.



Source: Seychelles authorities and Fund staff estimates.

1/ Bank liquidity is excess reserves plus CBS sterilization

14. **The authorities intend to maintain a flexible exchange rate regime, which has played a key role in adjusting to shocks since the start of the reform program.** They do not intend to intervene in the foreign exchange market except for smoothing out excessive volatility (SMEFP ¶25).

15. **A direct securitized injection will replenish the CBS' capital to statutory levels (¶27) in 2010.** The injection of T-bills amounting to 1.7 percent of GDP in three equal quarterly installments will strengthen the central bank balance sheet and enhance its portfolio of tradable securities for open market operations.

16. **Other central bank operations are undergoing extensive modernization with the Fund technical assistance.** The CBS promptly reformed monetary operations, banking supervision, reserve management and internal procedures and controls. Key priorities will

now be to adopt risk-based banking supervision and best supervisory practices (SMEFP ¶31–32); implement integrated (core) banking to improve efficiency and minimize operational risks (¶26); strengthen reserve management capabilities (with World Bank and Bank for International Settlement assistance) (¶28); and develop business continuity and crisis preparedness plans (¶30).

17. **The authorities are assessing the timing for and modalities of the divestiture of publicly-owned financial institutions, with the assistance of the World Bank Group.** The government invited IFC to conduct a detailed analysis of Nouvobanq and asked FIRST to help determine the optimal strategy for the Development Bank of Seychelles and the Housing Finance Corporation (SMEFP ¶42). Meanwhile, both are under CBS regulatory oversight and contracts for comprehensive financial audits were tendered in April 2010.

D. Public Enterprise Sector Reforms

18. **The authorities intend to put in place a comprehensive monitoring of the public enterprise sector and address the large quasi-fiscal risks.** Although risks stemming from Air Seychelles and the Public Utilities Company (PUC) are currently contained, both entities should be closely monitored. An international consulting firm was engaged to carry out a strategic assessment of the national airline (SMEFP ¶41); a study of the optimal tariff policy will be commissioned and PUC has been subjected to an independent operational audit (¶19). To enhance transparency and governance, the Ministry of Finance also has submitted the financial audits of several public enterprises to the scrutiny of the Public Accounts Committee of the National Assembly (¶41).

III. PROGRAM FINANCING, DESIGN, AND RISKS

19. **The program for 2010 is financed.** The commercial debt exchange and recent bilateral agreements with commercial banks and one bilateral creditor have significantly reduced program financing needs. The residual financing gap for 2010 is expected to be closed by restructuring the rest of public external debt.

20. **Primary surplus targets (quantitative performance criteria) for June, September and December 2010 have been revised upwards to reflect updated revenue projections.** The new targets lock in half the additional revenue.

21. **The CBS was subject to an update safeguards assessment in the context of the new arrangement.** The assessment, which is substantially complete, has found continued improvement in the safeguards framework of the central bank. The bank's 2009 financial statements were prepared and audited in accordance with international standards and have been published, and governance oversight has been strengthened. Nevertheless, some vulnerabilities remain concerning internal audit and controls, and the legal framework, which the authorities are committed to addressing. The recommendations in the draft assessment

report do not require action in the context of the first review and will be closely monitored going forward.

22. **The main risks to the outlook and the program stem from the volatile external environment and the run-up to the 2011 presidential elections.** A protracted slowdown in Europe—the main source market for tourism—and further depreciation of the euro would undermine export proceeds and economic activity. Piracy in the Indian Ocean could impinge upon tourism and fishing. Political opposition and vested interests could slow tax reforms and public enterprise restructuring. These risks appear manageable in view of the strong program ownership and track record of policy adjustment to external shocks under the previous arrangement, ongoing international anti-piracy efforts, and broad political support for the reforms.

IV. STAFF APPRAISAL

23. **Seychelles has made a good start on its second stage of reforms under an EFF-supported program, despite a difficult international environment, showing strong resilience to the double crisis it confronted.** Less than two years into a spectacular turnaround in its economic policies to address an external debt crisis and a global crisis, the country appears to have emerged from the recession earlier than initially expected.

24. **The economy is reaping the benefits of strong macroeconomic stabilization policies.** The continuation of prudent fiscal and monetary policies has granted credibility to the currency float introduced in November 2008; inflation has virtually disappeared; international reserves are being rebuilt, and key policy interest rates have been reduced.

25. **Seychelles remains highly exposed to external shocks.** Because piracy threats, risks to the European economic outlook (by far the main market for tourism), and further depreciation of the euro may affect the country's still fragile external position, the authorities should continue to stand ready to adjust policies as needed. Their decision to save half the upward revision in government revenue projected in 2010 is commendable. These savings will secure the targeted government debt reduction and contribute to strengthening the external position despite an adverse global environment.

26. **Progress on the ambitious program of tax and public finance management reforms is encouraging, but important steps still lie ahead.** The imminent replacement of the social security contribution by the PIT is an opportunity to eliminate concessional rates, broaden the tax base, and reduce tax rates. The introduction of VAT in 2012 will further eliminate cascading effects of the existing sales tax and set the proper incentives for exporters. The modernization of customs is an important step toward establishing a business-friendly environment. The authorities are also encouraged to further improve the budget preparation and execution cycle.

27. **Seychelles has made an excellent use of the Fund technical assistance, particularly in the modernization of central bank operations.** Progress in ensuring an independent monetary policy, strengthening supervision, and implementing the Fund's safeguard assessment recommendations is commendable. Further coordination with the treasury on the issuance of T-bills is needed to improve liquidity management and provide a more predictable environment for banks, facilitating the transmission of monetary policy signals.

28. **Restructuring the public enterprise sector is an essential condition to achieving high medium-term growth, driven by the development of a competitive private sector.** The recommendations of the ongoing financial and management audits for all key public enterprises should be implemented timely. Privatization should be actively pursued when market conditions permit, including for state-owned financial institutions. Staff welcomes the launch of preparatory work to put the public utilities company on a sound footing (including through proper tariff policies), to reform the social security institutions, and to establish an actuarially sound pension system.

29. **Staff encourages the authorities to complete the discussions on the restructuring of its external debt while ensuring strict comparability of treatment among creditors.** The strong track record of policy implementation has convinced most external creditors to bring back external debt to sustainable levels, including through successful debt exchange with private creditors.

30. **In light of strong performance through end-April 2010, compliance with the performance criteria, consistency with the Fund's Lending into Arrears policy, and satisfactory update safeguards assessment, staff recommends completion of the first EFF arrangement program and of financing assurances reviews.** Staff supports the modification of the quantitative performance criterion on the fiscal primary balance for end-June, end-September, and end-December 2010.

Table 1. Seychelles: Selected Economic and Financial Indicators, 2008–12

	2008	2009		2010		2011	2012
		Prog.	Prel.	Prog.	Proj.	Proj.	Proj.
National income and prices ¹		(Percentage change, unless otherwise indicated)					
Nominal GDP (millions of Seychelles rupees)	8,710	10,402	10,726	11,057	11,206	12,091	13,059
Real GDP	-1.3	-7.6	0.7	4.0	4.0	5.0	5.0
CPI (annual average)	37.0	32.9	31.8	2.3	-2.4	2.5	3.1
CPI (end-of-period)	63.3	1.9	-2.5	2.2	1.1	2.9	3.0
GDP deflator average	29.3	28.5	22.3	2.2	0.4	2.8	2.9
Money and credit		(Percentage change, unless otherwise indicated)					
Net claims on private sector	48.6	-12.1	-11.4	27.3	22.2
Broad money	27.2	-0.7	7.5	25.6	19.1
Reserve money	0.6	32.2	15.7	18.4	35.3
Velocity (GDP/broad money)	1.5	1.8	1.7	1.5	1.5
Money multiplier (broad money/reserve money)	5.3	4.0	4.9	4.2	4.3
Savings-Investment balance		(In percent of GDP)					
External savings	51.8	22.6	35.0	32.7	39.5	35.5	30.2
Gross national savings	-11.7	6.8	-5.8	-0.9	6.0	11.9	13.3
Of which: government savings	7.9	2.8	7.8	2.7	5.6	9.2	9.3
Gross investment	40.1	29.4	29.3	31.8	45.4	47.3	43.5
Of which: government investment	2.1	5.3	5.7	6.8	8.0	7.3	8.5
Government budget							
Total revenue, excluding grants	32.9	35.6	35.4	30.7	31.4	31.2	31.0
Expenditure and net lending	40.0	35.1	33.8	32.8	33.8	31.3	32.3
Current expenditure	28.7	32.8	31.0	28.0	28.9	24.2	23.8
Capital expenditure and net lending ¹	11.2	2.3	2.7	4.9	4.9	7.1	8.5
Overall balance, including grants	-3.4	2.8	5.0	0.9	0.7	2.1	0.8
Primary balance	3.9	13.3	14.8	7.0	7.4	6.0	4.7
Total public debt ^{2, 3}	136.7	140.1	128.2	109.5	82.4	76.7	65.4
Domestic	53.9	41.6	36.0	37.4	28.8	23.6	19.0
External ^{2, 3}	82.8	98.5	92.2	72.2	53.6	53.1	46.4
External sector		(In percent of GDP, unless otherwise indicated)					
Current account balance including official transfers	-51.8	-22.6	-35.0	-32.7	-39.5	-35.5	-30.2
Total stock of arrears (millions of U.S. dollars) ^{2, 3}	317	239	244	231	86	86	86
Total public external debt outstanding (millions of U.S. dollars) ^{2, 3}	759	755	729	708	492	516	551
(in percent of GDP)	82.8	98.5	92.2	72.2	53.6	52.9	53.4
Terms of trade (= - deterioration)	0.7	-2.1	-3.2
Real effective exchange rate (average, percent change)	-7.1	...	-6.6
Gross official reserves (end of year, millions of U.S. dollars)	51	153	169	202	224	274	324
In months of imports, c.i.f.	0.6	1.5	1.7	1.9	2.3	2.7	3.0
Exchange rate							
Seychelles rupees per US\$1 (end of period)	16.6	10.6	11.3
Seychelles rupees per US\$1 (period average)	9.5	14.1	13.6

Sources: Central Bank of Seychelles; Ministry of Finance; and IMF staff estimates and projections.

¹ In 2010 includes contingency spending.

² Reflects the impact of agreed debt restructuring including the Paris Club debt agreement of May 2009, and the commercial debt exchange in 2010Q1.

³ Includes arrears and the external debt of the central bank.

Table 2. Seychelles: Balance of Payments, 2008–12
(Millions of U.S. dollars)

	2008	2009	2010									2011	2012		
			Q1		Q2		Q3		Q4		Year			Year	Year
			Prel.	Prel.	Prog.	Prel.	Prog.	Prog.	Prog.	Prog.	Prog.			Prog.	Proj.
Current account	-475	-277	-56	-21	-51	-85	-40	-116	-173	-156	-321	-362	-346	-312	
(Percent of GDP)	-52	-35	-6	-2	-5	-9	-4	-13	-18	-17	-33	-39	-35	-30	
Trade balance	-412	-228	-52	-27	-31	-58	-27	-94	-152	-137	-263	-301	-278	-252	
Exports of goods	502	427	129	139	119	107	149	115	143	100	540	460	455	466	
<i>Of which: oil re-exports</i>	258	149	73	55	68	39	75	50	76	62	292	206	222	235	
<i>Of which: tuna exports</i>	214	165	47	58	37	51	61	48	58	25	203	181	200	195	
Imports of goods	-1,009	-748	-213	-190	-178	-177	-190	-222	-297	-237	-878	-826	-845	-867	
<i>of which: Oil imports</i>	-364	-203	-88	-66	-78	-50	-83	-63	-84	-70	-333	-249	-252	-275	
FDI-related imports	-288	-176	-41	-24	-45	-38	-49	-57	-68	-57	-204	-177	-182	-147	
Other	-352	-353	-83	-100	-54	-89	-59	-101	-144	-111	-341	-399	-411	-445	
Exports of services	486	398	112	107	109	93	120	108	121	102	462	410	446	497	
<i>Of which: tourism earnings</i>	270	205	61	65	56	47	64	56	69	47	250	215	250	290	
Imports of services	-391	-305	-81	-84	-81	-81	-106	-95	-120	-102	-387	-346	-333	-349	
Income, net	-120	-91	-18	-2	-30	-28	-25	-22	-33	-21	-106	-74	-72	-63	
<i>Of which: transfers of profits and dividends</i>	-51	-47	-15	-8	-15	-7	-20	-13	-17	-9	-67	-37	-42	-34	
<i>Of which: interest payments due^{1,3}</i>	-70	-48	-2	-3	-14	-21	-2	-7	-15	-7	-32	-41	-38	-38	
<i>of which: Public sector²</i>	-33	-37	-2	0	-14	-19	-2	-3	-15	-3	-32	-29	-14	-18	
Current transfers, net	57	41	15	9	10	1	12	0	12	2	48	12	4	4	
<i>of which: General government, net</i>	32	39	10	10	2	0	4	0	1	3	17	13	15	15	
Capital and financial account	366	121	58	70	30	45	57	117	144	153	291	385	374	355	
Capital account^{4,5}	5	56	4	234	4	6	46	57	8	7	62	304	0	17	
Financial account	361	64	54	-164	26	40	11	59	136	146	229	80	374	338	
Direct investment, net ³	166	113	50	26	54	26	57	40	84	40	245	133	126	100	
Portfolio investment, net ²	125	1	0	0	0	0	0	0	0	0	1	1	1	1	
Other investment, net	70	-50	4	-191	-29	13	-46	19	52	106	-17	-53	247	237	
<i>Of which: Government and government-guaranteed</i>	19	-110	-12	-236	-14	-8	-42	-37	11	11	-55	-270	12	32	
Disbursements	84	12	1	9	1	3	9	12	24	13	36	37	30	40	
Project loans	84	1	1	1	1	3	9	3	4	3	16	10	10	20	
Program loans	0	11	0	9	0	0	0	9	20	10	20	27	20	20	
Amortization (Principal payments) ²	-65	-79	-13	-13	-16	-11	-13	-9	-13	-2	-52	-35	-16	-7	
Debt forgiveness ⁵	...	-45	0	-231	0	0	-39	-39	0	0	-39	-270	0	0	
<i>Of which: Other liabilities</i>	54	89	4	33	-10	25	6	66	22	76	22	201	225	201	
<i>of which: foreign loans for investment³</i>	185	110	6	26	-9	26	8	38	23	38	25	128	121	98	
Net errors and omissions	-102	133	0	-29	0	0	0	0	0	0	0	-29	0	0	
Overall balance	-212	-24	2	20	-22	-40	17	1	-29	-3	-30	-7	28	44	
Financing	212	24	-1	-20	5	25	-14	-11	-29	-14	-39	-21	-43	-50	
Change in net international reserves (increase: -)	38	-43	-1	-41	5	25	-14	-11	-29	-14	-39	-42	-43	-50	
Change in gross official reserves (increase: -)	28	-50	-5	-41	2	18	-18	-14	-29	-17	-49	-54	-50	-50	
Liabilities to IMF, net	10	8	3	0	3	7	3	3	0	3	10	12	7	0	
Other Net Foreign Assets (increase: -)	0	-13	0	10	0	0	0	0	0	0	0	10	0	0	
Exceptional financing	174	79	0	11	0	0	0	0	0	0	0	11	0	0	
Change in arrears (increase: +) ^{4,6}	174	-74	0	-159	0	0	0	0	0	0	0	-159	0	0	
Clearance of arrears	0	153	0	170	0	0	0	0	0	0	0	170	0	0	
Financing gap	0	0	0	0	16	15	-2	10	57	18	69	28	14	6	
Memorandum items:															
Exports growth, percent	28.1	-14.9	23.5	34.2	24.3	23.6	25.6	-6.5	30.8	-12.7	26.1	7.8	-1.2	2.4	
Tourism growth, percent	-4.8	-24.3	3.4	10.7	21.5	12.2	-7.2	6.5	7.2	-8.8	4.9	5.0	16.2	16.2	
Imports growth, percent	37.5	-25.9	24.6	13.9	17.6	12.8	22.8	11.4	28.7	5.3	24.0	10.4	2.4	2.5	
<i>o/w non-FDI and domestic-oil imports</i>	13.3	-11.2	3.9	4.9	9.3	
Exports, percent of GDP	54.8	54.0	0.0	0.0	0.0	12.8	0.0	11.4	0.0	5.3	45.6	40.2	46.6	45.1	
Imports, percent of GDP	110.1	94.6	0.0	0.0	0.0	0.0	0.0	0.0	0.0	0.0	74.1	72.1	86.7	84.0	
FDI (incl. loans), USD million ³	350	223	56	52	45	52	65	78	107	78	270	260	247	198	
FDI (incl. loans), percent of GDP	38.2	28.2	25.0	28.3	25.3	19.2	
Gross international reserves (stock, e.o.p.) ⁷	51	169	158	210	156	192	174	207	202	224	202	224	274	324	
Months of prospective imports of goods and services	0.6	1.7	1.5	2.1	1.5	2.0	1.6	2.1	1.9	2.3	1.9	2.3	2.7	3.0	
o.w. Valuation change (+gain)		68													
Scheduled public external debt service ^{1,5}	221	125	16	17	29	32	15	17	27	8	86	78	54	46	
(Percent of exports of goods and services)	22.41	15.13	6.64	6.90	12.88	16.17	5.68	7.59	10.20	4.10	8.54	8.90	6.04	4.73	
Public external debt ^{1,5}	759	729	...	504	708	492	516	551	
(Percent of GDP)	82.8	92.2	...	54.8	72.2	53.6	52.9	53.4	
GDP	916	790	981	919	981	919	981	919	981	919	981	919	975	1,032	

Sources: Central Bank of Seychelles; Ministry of Finance; and IMF staff estimates and projections.

¹ Reflects the restructuring with Paris Club (with exception of a mortgaged oil tanker); three non-Paris Club creditors (South Africa, Malaysia, and Libya); and the commercial debt exchange (which included amortizing notes, bond, a commercial bank, and a land settlement) and some other commercial debt. The Paris Club agreement includes deferral of some interest during 2008 and June 2009.

² The eurobonds and amortizing notes as well as the bonds issued after the commercial debt exchange were classified as portfolio flows instead of other investment loans.

³ Reclassification of FDI. Preliminary findings suggest that a significant portion of FDI is foreign loans from non-parents.

⁴ Debt forgiveness contributed to the sharp increase in capital inflows in 2009 and 2010.

⁵ Debt forgiveness for Paris Club and some non-Paris Club creditors is two-stage (in 2009 and 2010).

⁶ In 2008, includes accelerated promissory notes.

⁷ Refers to CBS gross international reserves net of blocked deposits and project accounts.

Table 3. Seychelles: Consolidated Government Operations, 2008–2012 ¹

(Millions of Seychelles rupees; cumulative from the start of the year)

	2008	2009	2010								2011	2012
			Q1		Q2		Q3		Q4			
			Prog.	Prel.	Prog.	Proj.	Prog.	Proj.	Prog.	Proj.		
Total revenue and grants	3,190	4,165	835	848	1,679	1,796	2,685	2,829	3,723	3,866	4,039	4,330
Total revenue	2,868	3,793	776	822	1,559	1,694	2,444	2,576	3,390	3,514	3,778	4,048
Tax	2,456	3,318	712	747	1,425	1,513	2,222	2,265	3,067	3,090	3,376	3,622
Personal Income Tax		0	0	0	0	0	79	69	197	190	450	486
Social security tax	295	384	109	105	201	200	230	233	230	233	0	0
Trade tax	410	437	104	145	210	297	333	444	491	620	669	723
Goods and services tax (GST)	951	1,349	284	258	603	565	922	832	1,282	1,160	1,290	1,410
Business tax	524	802	136	126	268	284	454	467	599	602	649	666
Other	277	346	80	112	143	167	204	220	269	286	318	337
Nontax	412	474	64	75	133	181	222	311	323	424	401	426
Fees and charges	145	182	44	55	87	101	131	148	174	195	194	202
Dividends from parastatals	64	148	10	8	30	31	59	87	99	129	104	112
Other	203	143	10	12	17	50	32	76	50	101	103	111
External grants	321	373	59	26	121	101	242	253	333	352	261	282
Expenditure and net lending	3,483	3,625	670	767	1,571	1,849	2,449	2,826	3,628	3,788	3,781	4,220
Current expenditure	2,503	3,329	655	690	1,494	1,679	2,191	2,502	3,091	3,244	2,922	3,113
Primary current expenditure	1,875	2,283	556	473	1,162	1,166	1,760	1,831	2,415	2,489	2,457	2,612
Wages and salaries	688	766	176	158	352	347	528	541	704	735	717	775
Goods and services	489	715	150	133	344	366	535	578	754	777	838	905
Transfers	692	783	227	180	460	446	688	702	945	966	890	919
Social program of central government	192	290	75	49	157	145	234	237	339	341	298	320
Transfers to public sector from central government	220	199	64	51	127	131	191	203	255	273	251	230
Benefits and programs of Social Security Fund	279	295	88	80	175	171	263	261	351	352	342	369
Other	6	19	3	2	6	6	9	9	12	12	12	12
Interest payments due	629	1,046	100	217	333	513	430	671	676	755	465	501
Foreign interest	344	430	24	16	180	238	198	275	367	316	168	228
Domestic interest	285	616	75	201	150	275	230	396	308	439	226	199
Capital expenditure	183	608	104	78	241	293	478	552	747	833	888	1,107
Net lending	796	-315	-90	-1	-190	-123	-290	-263	-330	-349	-30	0
Contingency		3	0	0	25	0	70	35	120	60	0	0
Primary balance	336	1,586	265	298	441	460	667	675	771	833	723	611
Overall balance, commitment basis	-293	540	165	81	108	-53	237	4	95	78	258	110
Change in arrears	31	96	-25	-8	-50	-38	-75	-69	-100	-100	0	0
External interest	167	321	0	0	0	0	0	0	0	0	0	0
Budget	-136	-224	-25	-8	-50	-38	-75	-69	-100	-100	0	0
Overall balance, cash basis (after grants)	-262	637	140	73	58	-92	162	-66	-5	-22	258	110
Financing	262	-637	-140	-73	-58	92	-162	66	5	22	-258	-110
Foreign financing	233	-174	-132	-45	-288	-134	-324	-98	-194	42	153	400
Disbursements	672	135	11	107	28	146	135	290	405	442	368	512
Project loans	672	14	11	8	28	46	135	83	181	118	123	253
Program/budget support	0	120	0	99	0	99	0	206	224	324	245	259
Scheduled amortization	-1,630	-1,090	-143	-152	-322	-286	-465	-394	-611	-413	-228	-125
Change in amortization arrears	1,191	-1,213	0	-1,945	0	-1,945	0	-1,945	0	-1,945	0	0
Clearance of arrears	0	1,938	0	1,945	0	1,945	0	1,945	0	1,945	0	0
Debt service relief	0	56	0	0	6	6	6	6	12	12	13	13
Domestic financing, net	-70	-706	-59	-131	125	-89	-8	-307	-52	-733	-753	-743
Bank financing	-100	-823	-53	-140	112	-40	-7	-173	-46	-494	-715	-706
CBS	-3	-376	-18	-177	237	-177	198	-177	185	-177	-377	-372
CBS recapitalization	63	...	125	200	188
Commercial banks	-96	-447	-35	37	75	74	-5	-122	-31	-505	-339	-334
Nonbank financing	30	117	-6	9	12	13	-1	-9	-5	-51	-38	-37
Privatization and long-term lease of fixed assets	219	222	50	51	105	86	170	119	250	152	163	155
Statistical discrepancy	-120	22	0	52	0	52	0	52	0	52	0	0
Fiscal financing gap	0	0	-42	0	44	177	-21	298	465	510	179	78
<i>Memorandum item:</i>												
External debt service due	1,974	1,521	167	168	501	524	663	669	978	729	397	353

Table 3. Seychelles: Consolidated Government Operations, 2008–2012¹ (continued)
(Percent of GDP; cumulative from the start of the year)

	2008	2009	2010								2011	2012
			Q1		Q2		Q3		Q4			
			Prog.	Prel.	Prog.	Proj.	Prog.	Proj.	Prog.	Proj.		
Total revenue and grants	36.6	38.8	7.6	7.7	15.2	16.0	24.3	25.2	33.7	34.5	33.4	33.2
Total revenue	32.9	35.4	7.0	7.4	14.1	15.1	22.1	23.0	30.7	31.4	31.2	31.0
Tax	28.2	30.9	6.4	6.8	12.9	13.5	20.1	20.2	27.7	27.6	27.9	27.7
Personal Income Tax			0.0	0.0	0.0	0.0	0.7	0.6	1.8	1.7	3.7	3.7
Social security tax	3.4	3.6	1.0	1.0	1.8	1.8	2.1	2.1	2.1	2.1	0.0	0.0
Trade tax	4.7	4.1	0.9	1.3	1.9	2.6	3.0	4.0	4.4	5.5	5.5	5.5
Goods and services tax (GST)	10.9	12.6	2.6	2.3	5.4	5.0	8.3	7.4	11.6	10.3	10.7	10.8
Business tax	6.0	7.5	1.2	1.1	2.4	2.5	4.1	4.2	5.4	5.4	5.4	5.1
Other	3.2	3.2	0.7	1.0	1.3	1.5	1.8	2.0	2.4	2.6	2.6	2.6
Nontax	4.7	4.4	0.6	0.7	1.2	1.6	2.0	2.8	2.9	3.8	3.3	3.3
Fees and charges	1.7	1.7	0.4	0.5	0.8	0.9	1.2	1.3	1.6	1.7	1.6	1.5
Dividends from parastatals	0.7	1.4	0.1	0.1	0.3	0.3	0.5	0.8	0.9	1.1	0.9	0.9
Other	2.3	1.3	0.1	0.1	0.1	0.4	0.3	0.7	0.5	0.9	0.9	0.9
External grants	3.7	3.5	0.5	0.2	1.1	0.9	2.2	2.3	3.0	3.1	2.2	2.2
Expenditure and net lending	40.0	33.8	6.1	6.9	14.2	16.5	22.1	25.2	32.8	33.8	31.3	32.3
Current expenditure	28.7	31.0	5.9	6.2	13.5	15.0	19.8	22.3	28.0	28.9	24.2	23.8
Primary current expenditure	21.5	21.3	5.0	4.3	10.5	10.4	15.9	16.3	21.8	22.2	20.3	20.0
Wages and salaries	7.9	7.1	1.6	1.4	3.2	3.1	4.8	4.8	6.4	6.6	5.9	5.9
Goods and services	5.6	6.7	1.4	1.2	3.1	3.3	4.8	5.2	6.8	6.9	6.9	6.9
Transfers	7.9	7.3	2.1	1.6	4.2	4.0	6.2	6.3	8.5	8.6	7.4	7.0
Social program of central government	2.2	2.7	0.7	0.4	1.4	1.3	2.1	2.1	3.1	3.0	2.5	2.5
Transfers to public sector from central government	2.5	1.9	0.6	0.5	1.2	1.2	1.7	1.8	2.3	2.4	2.1	1.8
Benefits and programs of Social Security Fund	3.2	2.7	0.8	0.7	1.6	1.5	2.4	2.3	3.2	3.1	2.8	2.8
Other	0.1	0.2	0.0	0.0	0.1	0.1	0.1	0.1	0.1	0.1	0.1	0.1
Interest payments due	7.2	9.8	0.9	2.0	3.0	4.6	3.9	6.0	6.1	6.7	3.8	3.8
Foreign interest	3.9	4.0	0.2	0.1	1.6	2.1	1.8	2.5	3.3	2.8	1.4	1.7
Domestic interest	3.3	5.7	0.7	1.8	1.4	2.5	2.1	3.5	2.8	3.9	1.9	1.5
Capital expenditure	2.1	5.7	0.9	0.7	2.2	2.6	4.3	4.9	6.8	7.4	7.3	8.5
Net lending	9.1	-2.9	-0.8	0.0	-1.7	-1.1	-2.6	-2.4	-3.0	-3.1	-0.2	0.0
Contingency	0.0	...	0.2	0.0	0.6	0.3	1.1	0.5	0.0	0.0
Primary balance	3.9	14.8	2.4	2.7	4.0	4.1	6.0	6.0	7.0	7.4	6.0	4.7
Overall balance, commitment	-3.4	5.0	1.5	0.7	1.0	-0.5	2.1	0.0	0.9	0.7	2.1	0.8
Change in arrears	0.4	0.9	-0.2	-0.1	-0.5	-0.3	-0.7	-0.6	-0.9	-0.9	0.0	0.0
External interest	1.9	3.0	0.0	0.0	0.0	0.0	0.0	0.0	0.0	0.0	0.0	0.0
Budget	-1.6	-2.1	-0.2	-0.1	-0.5	-0.3	-0.7	-0.6	-0.9	-0.9	0.0	0.0
Overall balance, cash basis (after grants)	-3.0	5.9	1.3	0.7	0.5	-0.8	1.5	-0.6	0.0	-0.2	2.1	0.8
Financing	3.0	-5.9	-1.3	-0.7	-0.5	0.8	-1.5	0.6	0.0	0.2	-2.1	-0.8
Foreign financing	2.7	-1.6	-1.2	-0.4	-2.6	-1.2	-2.9	-0.9	-1.8	0.4	1.3	3.1
Disbursements	7.7	1.3	0.1	1.0	0.3	1.3	1.2	2.6	3.7	3.9	3.0	3.9
Project loans	7.7	0.1	0.1	0.1	0.3	0.4	1.2	0.7	1.6	1.1	1.0	1.9
Program/budget support	0.0	1.1	0.0	0.9	0.0	0.9	0.0	1.8	2.0	2.9	2.0	2.0
Scheduled amortization	-18.7	-10.2	-1.3	-1.4	-2.9	-2.6	-4.2	-3.5	-5.5	-3.7	-1.9	-1.0
Change in amortization arrears	13.7	-11.3	0.0	-17.6	0.0	-17.4	0.0	-17.4	0.0	-17.4	0.0	0.0
Clearance of arrears	0.0	18.1	0.0	17.6	0.0	17.4	0.0	17.4	0.0	17.4	0.0	0.0
Debt service relief	0.0	0.5	0.0	0.0	0.1	0.1	0.1	0.1	0.1	0.1	0.1	0.1
Domestic financing	-0.8	-6.6	-0.5	-1.2	1.1	-0.8	-0.1	-2.7	-4.7	-6.5	-6.2	-5.7
Bank financing	-1.1	-7.7	-0.5	-1.3	1.0	-0.4	-0.1	-1.5	-4.2	-4.4	-5.9	-5.4
CBS	...	-3.5	-0.2	-1.6	2.1	-1.6	1.8	-1.6	0.4	-1.6	-3.1	-2.8
CBS recapitalization	0.0	-1.8	0.6	-1.8	1.1	-1.8	1.7
Commercial banks	...	-4.2	-0.3	0.3	0.7	0.7	0.0	-1.1	-2.8	-4.5	-2.8	-2.6
Nonbank	0.3	1.1	-0.1	0.1	0.1	0.1	0.0	-0.1	-0.5	-0.5	-0.3	-0.3
Privatization and long-term lease of fixed assets	2.5	2.1	0.5	0.5	0.9	0.8	1.5	1.1	2.3	1.4	1.3	1.2
Statistical discrepancy	-1.4	0.2	0.0	0.5	0.0	0.5	0.0	0.5	0.0	0.5	0.0	0.0
Fiscal financing gap	0.0	0.0	-0.4	0.0	0.4	1.6	-0.2	2.7	4.2	4.5	1.5	0.6
<i>Memorandum items:</i>												
Nominal GDP	8,710	10,726	11,057	11,206	11,057	11,206	11,057	11,206	11,057	11,206	12,091	13,059
Domestic debt (percent of revised GDP)	53.9	36.0	37.4	28.8	23.6	19.0

Sources: The Seychelles authorities and IMF staff estimates and projections.

¹ Includes the central government and the social security system.

Table 4. Seychelles: Monetary Survey and Central Bank Accounts, 2008–10

	2008		2009		2010							
					Mar.		June ⁴		Sep. ⁴		Dec. ⁴	
	Prog.	Act.	Prog.	Act.	Prog.	Act.	Prog.	Proj.	Prog.	Proj.	Prog.	Proj.
(Seychelles rupees millions, unless otherwise indicated)												
Monetary survey												
Net foreign assets	2,105	2,363	2,897	2,388	3,345	2,373	3,079	2,563	3,244	2,956	3,408	
Central bank	1,050	1,777	1,998	1,802	2,397	1,759	2,140	1,942	2,304	2,271	2,469	
Deposit money banks	1,055	586	899	586	947	614	939	621	941	684	939	
Net domestic assets	3,848	3,547	3,504	3,834	3,223	4,182	3,684	4,451	3,952	4,466	4,216	
Domestic credit	5,949	4,410	4,796	4,518	4,811	4,948	5,028	5,069	5,018	4,878	4,866	
Net claims on the government	3,082	1,722	2,255	1,707	2,115	1,995	2,216	1,934	2,082	1,457	1,761	
Credit to the economy	2,867	2,688	2,540	2,811	2,695	2,954	2,813	3,135	2,936	3,421	3,105	
Other items, net	-2,102	-863	-1,292	-684	-1,587	-766	-1,344	-618	-1,066	-413	-650	
Broad money	5,952	5,910	6,401	6,222	6,568	6,555	6,763	7,015	7,197	7,421	7,623	
Currency in circulation	478	503	500	509	497	528	519	558	549	587	577	
Foreign currency deposits	1,913	1,514	1,610	1,600	1,682	1,687	1,655	1,808	1,762	1,914	1,867	
Local currency deposits	3,562	3,893	4,291	4,113	4,388	4,339	4,589	4,648	4,886	4,921	5,179	
Central bank												
Net foreign assets	1,050	1,777	1,998	1,802	2,397	1,759	2,140	1,942	2,304	2,271	2,469	
Foreign assets	1,207	1,982	2,207	2,044	2,648	2,040	2,468	2,264	2,675	2,627	2,908	
Of which: official reserves	843	1,689	1,907	1,740	2,470	1,735	2,267	1,954	2,473	2,302	2,704	
Foreign liabilities	157	205	210	242	250	281	329	322	372	355	439	
Net domestic assets	70	-297	-702	-266	-973	-168	-548	-268	-630	-518	-716	
Domestic credit	851	-260	-657	-279	-779	27	-295	-48	-302	-274	-311	
Government (net) ¹	1,099	60	724	55	547	284	609	264	672	105	735	
Commercial banks	-22	-198	-1,266	-212	-1,202	-135	-781	-190	-851	-257	-922	
Other (parastatals)	-226	-122	-114	-122	-123	-122	-123	-122	-123	-122	-123	
Other items, net	-780	-37	-45	13	-195	-196	-254	-221	-328	-245	-405	
Reserve money	1,120	1,480	1,296	1,536	1,424	1,591	1,591	1,674	1,674	1,753	1,753	
Currency in circulation	478	503	500	509	497	528	519	558	549	587	577	
Commercial bank reserves (includes cash in vault) ²	642	977	796	1,028	927	1,063	1,072	1,116	1,125	1,166	1,176	
o.w. required reserves in foreign currency	...	150	170	161	176	172	188	183	200	195	212	
required reserves in domestic currency	745	...	441	...	453	...	473	...	502	...	532	
Memorandum items:												
Gross international reserves (US\$ millions) ³	51	153	169	158	210	156	192	174	207	202	224	
Foreign Currency Deposits (US\$ millions)	115	137	143	145	143	152	140	161	147	168	154	
Broad money growth (12-month percent change)	27.2	-0.7	7.5	15.0	21.4	29.4	33.5	29.6	33.0	25.6	19.1	
Credit to the economy (12-month percent change)	48.6	-12.1	-11.4	-2.7	2.9	10.1	14.3	19.3	19.1	27.3	22.2	
Reserve money (12-month percent change)	0.6	32.2	15.7	46.2	35.5	42.1	42.2	43.2	43.1	18.4	35.3	
Money multiplier (broad money/reserve money)	5.3	4.0	4.9	4.1	4.6	4.1	4.3	4.2	4.3	4.2	4.3	
Velocity (GDP/broad money; end of period)	1.5	1.8	1.7	1.5	1.5	1.5	1.5	1.5	1.5	1.5	1.5	
Change in Net Credit to Government (change in quarter)	-158	-386	148	-15	-140	287	100	-60	-133	-478	-321	

Sources: Central Bank of Seychelles and IMF staff estimates and projections.

¹ The difference compared to the program was due to unplanned large repayment in Q4 of Tbills to the private sector out of government deposits at the CBS.

² Reserve requirements were lowered from 13% to 10% in Q4 2009.

³ Reflects an increase in SDR holdings following SDR allocation of SDR 7.9 million in Q3 2009.

⁴ Assumes recapitalization of the CBS by SR 188 million in three equal quarterly installments.

Table 5. Seychelles: Financial Soundness Indicators for the Banking Sector, 2007–10¹
(Percent, end of period)

	2007				2008				2009				2010
	Q1	Q2	Q3	Q4	Q1	Q2	Q3	Q4	Q1	Q2	Q3	Q4	Q1
Capital adequacy²													
Regulatory capital to risk weighted assets	20.4	21.0	18.2	18.2	18.4	17.6	17.9	19.4	13.6	17.8	22.0	21.7	21.4
Regulatory tier 1 capital to risk weighted assets	14.8	16.1	14.8	12.9	12.9	14.0	13.4	10.4	12.9	17.1	21.3	21.0	20.7
Capital to assets (net worth)	6.2	6.5	6.4	6.4	6.9	6.6	7.0	8.4	9.6	8.7	9.7	9.9	10.3
Net tangible capitalization ³	6.2	6.6	6.5	6.5	7.0	6.6	7.1	8.4	9.6	8.7	9.8	9.9	10.4
Asset quality													
Foreign exchange loans to total loans	24.1	25.1	28.7	30.8	32.7	32.9	31.6	50.8	50.5	43.0	41.1	37.2	34.3
Nonperforming loans to gross loans	3.7	2.9	2.5	2.3	2.0	2.1	2.0	2.0	2.3	4.3	4.2	3.8	4.1
Provisions as percentage of nonperforming loans	38.2	44.1	45.6	45.9	51.2	50.3	59.6	58.3	56.8	35.2	32.6	33.8	41.7
Earnings and profitability													
Return on assets (annualized)	3.9	3.4	5.0	6.6	4.3	3.4	2.8	16.1	5.3	3.0	-0.2	3.2	3.4
Return on equity (annualized)	59.1	50.4	68.3	93.0	59.5	47.9	39.3	199.4	55.1	35.4	-2.8	32.4	33.6
Interest margin to gross income	60.0	66.1	57.9	46.0	58.7	62.8	58.3	24.2	62.1	83.7	105.5	68.6	56.5
Noninterest expense to gross income	35.5	39.7	33.3	32.3	33.2	43.5	49.4	17.8	36.4	48.7	116.5	49.1	44.0
Net interest margin (annualized) ⁴	3.6	3.7	4.3	4.5	3.8	3.8	3.1	4.8	5.1	4.8	4.2	4.0	3.2
Net noninterest margin (annualized) ⁵	0.3	-0.3	0.6	2.1	0.5	-0.4	-0.4	11.4	0.1	-1.9	-4.9	-1.0	0.0
Expense to income	48.5	53.5	44.8	42.2	46.6	55.9	62.5	25.5	52.3	62.2	111.2	58.0	53.0
Interest expense to gross income	25.2	29.5	20.8	17.2	25.0	28.0	35.0	10.2	33.2	35.8	47.1	21.2	19.0
Liquidity													
Core liquid assets to total assets ⁶	19.2	18.6	11.4	10.0	30.8	34.6	36.4	37.8	36.0	35.0	37.7	43.2	45.2
Broad liquid assets to total assets ⁷	54.8	55.8	44.3	39.4	59.2	60.9	60.0	55.7	50.8	53.0	57.6	58.4	61.0
Liquid assets (broad) to short term liabilities	57.3	57.5	46.7	40.8	59.3	61.6	87.1	56.5	53.2	56.2	62.1	62.7	65.0
Liquid assets (broad) to total liabilities	58.7	60.1	47.8	42.3	63.9	65.5	64.8	61.2	56.2	58.0	63.8	64.7	68.0
Liquid assets to deposit liabilities	64.0	64.5	52.5	46.0	68.3	72.4	71.7	66.4	63.1	63.8	71.4	69.4	72.4
Foreign exchange exposure													
Net open foreign exchange position to capital	2.6	14.1	28.3	28.5	24.9	31.3	21.3	58.9	44.4	32.4	21.9	33.1	20.9

Source: Central Bank of Seychelles.

¹ Excluding purely offshore banks.

² Under new standards of provisioning and capital adequacy.

³ Defined as: equity capital/(assets-interest in suspense-provisions).

⁴ Defined as: (Interest income - interest expense)/average assets.

⁵ Defined as: (Noninterest income - noninterest expense)/average assets

⁶ Core liquid assets include cash, balances with CBS and deposits with other banks.

⁷ Broad liquid assets include core liquid assets plus investments in government securities.

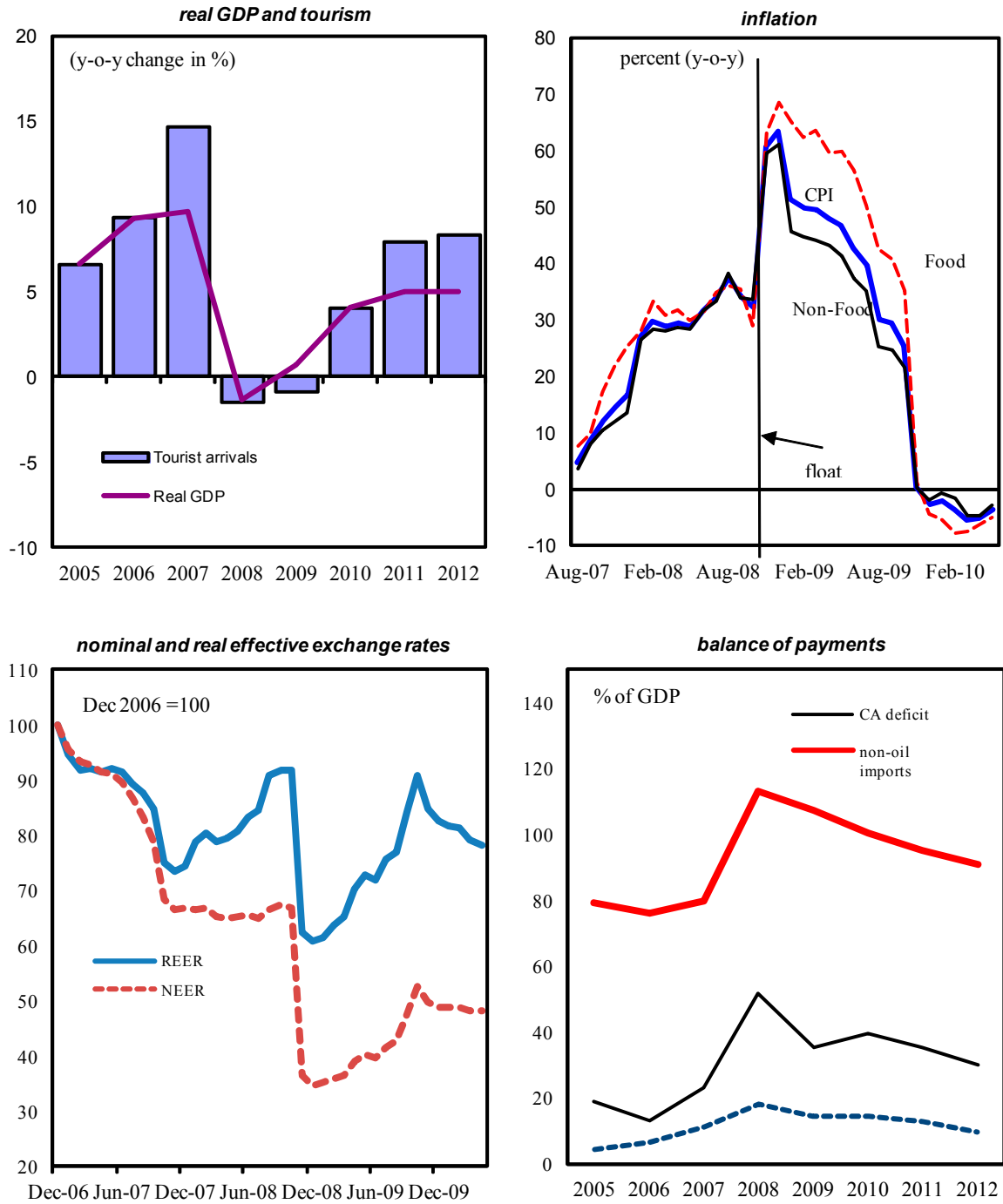
**Table 6. Seychelles: Fund Disbursements and Timing of Reviews
Under the Proposed Three-Year EFF, 2009–12**

Program Review	Date of availability	Conditions	<i>Amount</i>	
			(millions of SDR)	(percent of quota)
	December 22, 2009	Board approval of the EFF arrangement.	0.88	10
	March 15, 2010	Compliance with end-December 2009 quantitative performance criteria and completion of a financing assurances review (if needed)	2.20	25
First	June 15, 2010	Completion of first program review and financing assurances review (if needed) and compliance with end-March 2010 quantitative performance criteria.	2.20	25
	September 15, 2010	Compliance with end-June 2010 quantitative performance criteria and completion of a financing assurances review (if needed)	2.20	25
Second	December 15, 2010	Completion of second program review and financing assurances review (if needed) and compliance with end-September 2010 quantitative performance criteria.	1.76	20
	March 15, 2011	Compliance with end-December 2010 quantitative performance criteria and completion of a financing assurances review (if needed).	1.76	20
Third	June 15, 2011	Completion of third program review and a financing assurances review (if needed) and compliance with end-March 2011 quantitative performance criteria)	1.76	20
	September 15, 2011	Compliance with end-June 2011 quantitative performance criteria and completion of a financing assurances review (if needed)	1.76	20
Fourth	December 15, 2011	Completion of fourth program review and a financing assurances review (if needed) and compliance with end-September 2011 quantitative performance criteria)	1.32	15
	March 15, 2012	Compliance with end-December 2011 quantitative performance criteria and completion of a financing assurances review (if needed)	1.32	15
Fifth	June 15, 2012	Completion of fifth program review and a financing assurances review (if needed) and compliance with end-March 2012 quantitative performance criteria)	1.32	15
	September 15, 2012	Compliance with end-June 2012 quantitative performance criteria and completion of a financing assurances review (if needed)	1.32	15
Total			19.8	225

Table 7. Seychelles: Structural Benchmarks, 2009–10

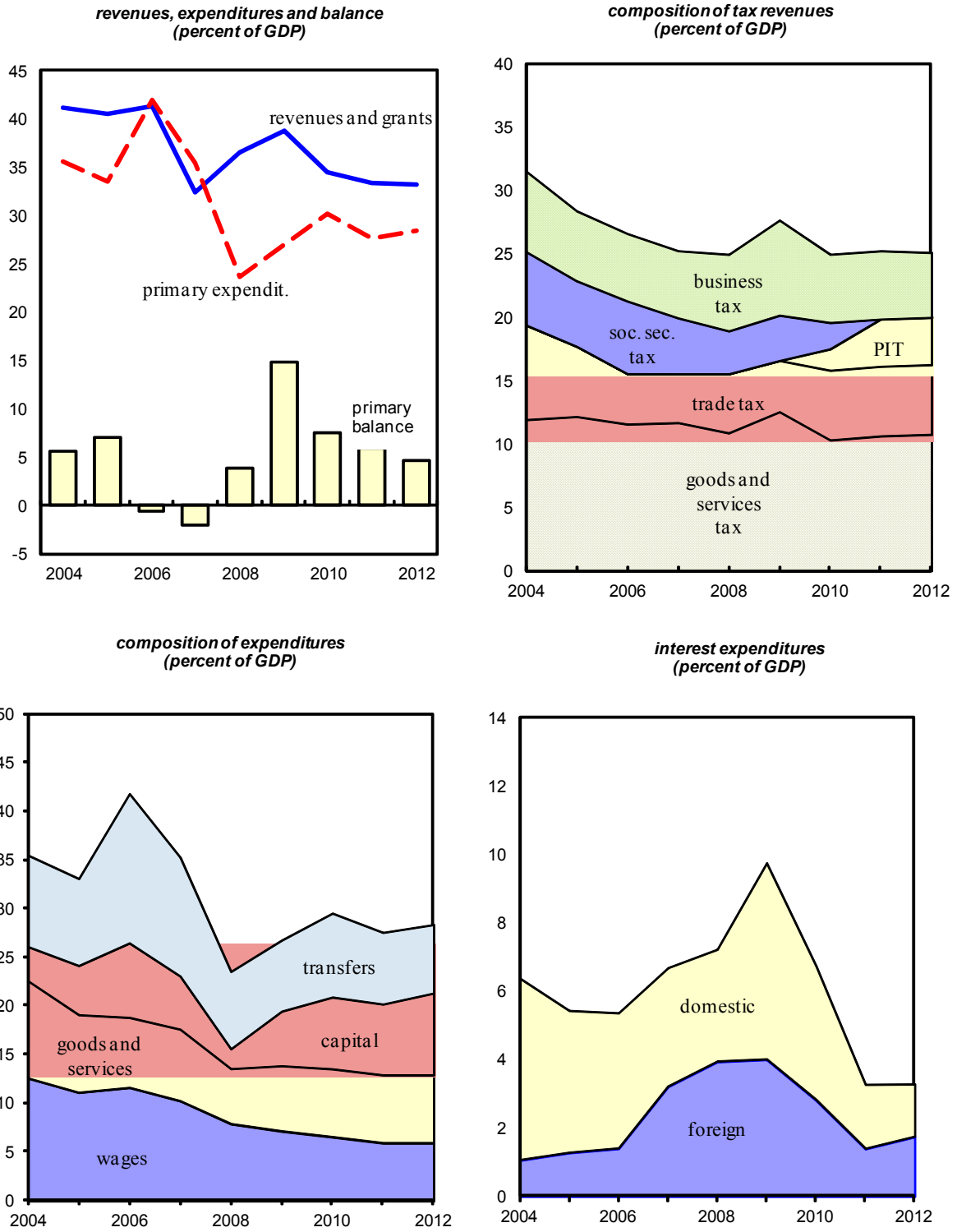
Measure	Target date	Macroeconomic rationale	Status
Introduce a treasury single account.	End-September 2009	To strengthen public finances, key to sustainability efforts.	Met. The TSA is leveraging progress on PFM.
Adopt foreign reserves management investment guidelines.	End-September 2009	To ensure management of foreign reserves in line with best international practice.	Met. The CBS Board adopted guidelines on September 25, 2009.
Adopt Public Enterprise Monitoring and Control act.	End-September 2009	To improve oversight over public enterprises and reduce quasi-fiscal risks.	Met. Parliamentary approval secured on September 28, 2009.
Complete CBS procedures manual (MEFP, ¶46).	End-December 2009	To support improved efficiency and transparency in monetary policy.	Met. The manual was approved on December 29, 2009.
CBS to publish commercial bank supervision report (MEFP, ¶46).	End-December 2009	To promote competition and transparency in the banking system.	Met. Published on the CBS website on December 29, 2009
Amend the Business Tax Act in line with the tax reform strategy (MEFP, ¶22).	End-December 2009	To broaden the tax base, modernize tax policy, and remove distortions.	Met.
Cabinet approval of customs reform strategy and implementation plan (MEFP, ¶23).	End-March 2010	To transform customs into a modern and efficient entity.	Met. The approval was secured on March 17, 2010.
Publish general government fiscal statistics (MEFP, ¶29).	End-April 2010	To enhance transparency and coverage of public finance.	Met. Fiscal statistics were published on April 23, 2010
Submit to National Assembly a new customs management act (MEFP, ¶23).	End-June 2010	To institutionalize best international practice and a better business climate.	Moved to end-September 2010, to address regional harmonization issues.
Introduce Personal Income Tax (MEFP, ¶22).	July 1, 2010	To broaden the tax base and provide for more equitable taxation.	
Introduce budget submissions protocols and procedures (MEFP, ¶28).	End-July 2010	To strengthen budget preparation.	
Adopt a new chart of account for the 2011 budget (MEFP, ¶29).	End-November 2010	To ensure proper classification and increase efficiency of the budget as a policy tool.	
Submit to National Assembly a bill creating a national clearing house and settlement system (MEFP, ¶44).	End-December 2010	To introduce necessary financial infrastructure for improved efficiency and reduced risks.	

Figure 1. Seychelles: Macroeconomic Developments



Source: Seychelles authorities and Fund staff estimates.

Figure 2. Seychelles: Fiscal Sector



Source: Seychelles authorities and Fund staff estimates.

APPENDIX I

SEYCHELLES: LETTER OF INTENT

June 1, 2010

Mr. Dominique Strauss-Kahn
Managing Director
International Monetary Fund
Washington , D.C. 20431

Dear Mr. Strauss-Kahn:

1. The attached Supplementary Memorandum of Economic and Financial Policies for 2010–12 (MEFP) describes Seychelles' performance through end-April 2010 and updates macroeconomic and structural policies for the remainder of 2010, as well as our priorities through 2012. This MEFP complements and updates the MEFP of December 3, 2009 which set out the objectives of our three-year program supported by an arrangement under the Extended Fund Facility (EFF).
2. **We request completion of the first review under our EFF arrangement and the release of the third tranche of SDR 2.2 million (25 percent of quota) there under.** All the quantitative performance criteria (PCs) at end-March 2009 were met and the two structural benchmarks for end-March and end-April 2010 respectively were observed. We also request the modification of the quantitative performance criterion on the fiscal primary balance.
3. **We believe that the economic and financial policies set forth in the MEFP are sufficient to ensure that the objectives of the program will be met.** We stand ready to take any further measures that may prove necessary to meet our objectives. We will consult with the Fund on the adoption of these measures, and in advance of revisions to the policies contained in the MEFP, in accordance with the Fund's policies on such consultations.
4. **The completion of the second review under the EFF will be based on meeting the quantitative PCs at end-September 2010 and is scheduled to be completed by end-December 2010.** Quarterly financing assurance reviews will continue as long as public debt arrears remain outstanding.

5. **In line with our commitment to transparency, we request that the IMF publish this letter, the MEFP, and the Technical Memorandum of Understanding.** We will simultaneously publish these documents in Seychelles.

Sincerely yours,

/s/

James Alix Michel
President
Republic of Seychelles

Attachments: SMEFP and TMU

ATTACHMENT I

SEYCHELLES: SUPPLEMENTARY MEMORANDUM OF ECONOMIC, FINANCIAL AND STRUCTURAL REFORM POLICIES FOR 2010–12

I. INTRODUCTION

This document:

- Reviews macroeconomic and financial performance under our Extended Fund Facility (EFF) arrangement through end-April 2010.
- Updates the MEFP of December 3, 2009, detailing our policy commitments through the remainder of 2010 to support completion of the second EFF review, as well as for the three year period 2010-2012 under the EFF arrangement.

II. MACROECONOMIC AND FINANCIAL CONTEXT

1. **Macroeconomic trends continue to evolve favorably, with recent developments generally exceeding expectations.** Economic activity was flat in 2009, rather than the anticipated contraction, consistent with early signs of recovery in the second half of the year. This positive momentum has continued into the first quarter of 2010, underpinned by an increase in tourist arrivals. Tourism activity has been maintained through deep discounting that has contributed to a significant decline in the terms of trade. Since December 2009 the nominal effective exchange rate has stabilized, with the rupee depreciating against the US dollar and appreciating against the Euro in similar proportions. Inflationary pressures remain well-contained, with the year-on-year inflation rate falling to -5.1 percent in April. T-Bill rates have declined to around 3 percent (91 day), consistent with tight fiscal policy and a measured easing in monetary conditions. However, credit growth has been slow to pick up despite adequate liquidity conditions, consistent with the slight recovery in domestic activity to date and with commercial lending rates adjusting only gradually to the financial sector's lower cost of borrowing. The reconstitution of gross international reserves has progressed strongly to \$US190 million (2 months of imports) at end April 2010.

2. **Commercial banks remain well capitalized and there are no signs of deterioration in asset quality in the financial sector.** Based on first quarter 2010 data, the capitalization level of banks stood at 21.5 percent measured according to the Basel 1 capitalization standard and 10.4 percent on a net tangible capitalization basis. Total assets of the banking sector increased by 1 percent from December 2009 to March 2010. Relative to total assets, total credit remained at a low level, growing by a modest 3 percent. Notwithstanding the economic slowdown, nonperforming loans as a percentage of total loans have remained at 4 percent, indicating that credit remains of a high quality.

3. **There was no significant change in interest rates over the quarter.** The average weighted interest rate on savings deposits has remained stable at around 1.85 percent, which is a reflection of the high liquidity in the banking system. On the lending side, despite the reduction in prime lending rate by 1.9 percentage points to 10.9 percent in March, the average lending rate fell by only 43 basis points. The margin between the average lending and savings rates stood at 11.2 percent, highlighting the need for strengthened competition in our banking sector.

4. **The outlook is for economic recovery to gain traction from 2010 as activity responds to our first generation of reforms.** We are projecting that real GDP will grow by 4 percent in 2010, building on the momentum in the second half of 2009, and driven by a projected 8 percent rise in tourism arrivals. Deflationary pressures are expected to wane as economic activity picks up and the pass through of the rupee appreciation experienced in 2009 abates. Risks to the improved economic outlook include the potential impact on tourism and related investment of economic developments in Europe and any further disruption to air services arising from volcanic activity in Iceland. Piracy in the Indian Ocean has had a negative impact on both our fishing and tourism sectors, with any further escalation presenting both economic and fiscal risks.

III. Program Implementation and 2010 Program Update

5. **The major objectives of our EFF-supported program are to:**

- a. consolidate macroeconomic stability;
- b. complete debt restructuring and achieve external sustainability; and
- c. improve economic efficiency and durably raise growth through the implementation of a second generation of structural reforms.

6. **Our ambitious structural reform agenda aims to transform the economy by institutionalizing higher governance standards, rationalizing the public sector and improving the business environment.** As detailed below, we are making good progress against the three structural reform pillars established under our EFF arrangement - public enterprise restructuring, tax reform, and strengthened public financial management. Our EFF arrangement also provides the macroeconomic framework for working with other development partners (such as the World Bank, African Development Bank and European Union) on enhancing the role of the private sector in the economy.

7. **The government has continued to exceed its fiscal targets and is determined to maintain its strong track record in this regard.** The primary fiscal surplus in 2009 was 14.9 percent of GDP, representing a fiscal contraction of some 11 percentage points of GDP compared to 2008. The primary surplus for the first quarter was 2.7 percent of GDP, exceeding the target established at the commencement of our EFF arrangement by

0.3 percentage points. This result was driven by both lower expenditures and higher revenue collection, in part due to stronger than anticipated economic activity in 2009 and the recent depreciation of the rupee (boosting GST on imports).

8. **Price stability remains the primary objective of monetary policy.** Our success in containing inflation over the past year, and the significant appreciation of the rupee, allowed for a loosening of monetary policy from the third quarter of 2009, which has arrested the decline in prices in April 2010. While a buildup of liquidity - due in part to faster-than-expected repayment of domestic debt by the government - has made monetary policy more challenging, we have succeeded in meeting both our reserve money and net international reserves targets with margins. We remain committed to the float of the rupee and to completing the move to indirect monetary instruments as conditions allow. The CBS continues to closely monitor credit and price developments and stands ready to tighten monetary policy should inflationary pressures emerge.

9. **We have made significant progress in normalizing relations with external creditors.** Reflecting this, the external debt stock declined from 92 percent of GDP in 2009 to 54 percent of GDP in March 2010. Fitch Ratings assigned a single-B rating with a positive outlook to external debt, and declared that it considered the Seychelles default to be cured.

10. **All quantitative PCs at end-March were met with margins (Table 1) and we have implemented all structural benchmarks scheduled for completion prior to the first EFF review (Table 2).** Table 4 provides an update of our broader economic reform program, both adding to and updating the timing of measures detailed in our previous MEFP.

FISCAL POLICY

11. **The overarching goal of fiscal policy remains to put public finances on a sustainable path, while creating the fiscal space to raise public investment and support our targeted social safety net.** At the onset of the program, primary fiscal surpluses were targeted at 13.4 of GDP in 2009, 7 percent of GDP in 2010, declining to about 4½ percent by 2012. We have exceeded the 2009 target and plan to also exceed the program target for 2010, which will accelerate progress toward fiscal sustainability, assuming full external debt restructuring, and allow us to further reduce domestic public debt, releasing resources to support private sector development.

2010 BUDGET

12. **Based on the outcome of the first four months, we now project higher government revenue by the equivalent of 1 percent of GDP, half of which will be saved.** Higher projected revenue comes from a combination of higher dividends from several public enterprises and revenue over performance in the first four months of 2010. Additional

current spending includes the cost of termination benefits associated with extending our program of outsourcing noncore functions beyond ministries and departments to all budget-dependent agencies, the higher-than-budgeted cost of the new wage grid and scheme of service for teachers and health professionals (with a view to arresting the ongoing exodus to the private sector), as well as urgent but unforeseen spending on goods and services. The fiscal margin freed by the accelerated repayment to the government of loans to public entities and the partial release of the capital expenditure contingency agreed at the commencement of our EFF arrangement will fund additional infrastructure as well as the increased cost of some investment projects. Looking ahead, SR 35 million will be released from the contingency provided the primary balance through June 2010 remains on track; and the remaining 25 million will be released provided the primary balance through end-September 2010 remains on track.

TAX REFORM

13. **We launched a comprehensive reform of the tax system with the 2010 budget.** Our objective is to have a simple, fair and equitable system, which will promote growth, improve self compliance, and level the playing field for investors. Our tax reform comprises three pillars:
- a. The first stage was the introduction of a **revised Business Tax Act** from January 1, 2010. The business tax reform broadened the tax base and provided for a step-wise reduction in rates to promote competitiveness and achieve harmonization across sectors. As a first step, the maximum rate has been revised downward by 7 percentage points, to 33 percent. The tax-free threshold was abolished for companies and reduced for sole traders and partnerships.
 - b. The second stage will be the **introduction of a withholding-based personal income tax (PIT)** from 1 July, 2010 on wages to replace social security contributions, expanding the labor income tax base to resident expatriates and eliminating existing sectoral concessions. Government policy is to broaden the application of the PIT to other sources of domestic-sourced income (e.g., dividends and interest on savings) once the PIT becomes established and the new system has been assessed. PIT rates will be harmonized at 15 percent, for all categories of workers, effective January 1, 2011. The PIT legislation has been approved by Cabinet and will be introduced in the National Assembly in June 2010.
 - c. The third pillar of the Government's tax reform strategy is the **introduction of a Value Added Tax (VAT)** from January 1, 2012. The VAT will replace the current multiple rate GST, broadening the indirect tax base and improving both the efficiency of the indirect tax system and external competitiveness. Important steps in this direction were taken in the 2010 Budget, including expanding the GST base to a broader range of services and the reduction of cascading effects through the option of

levying GST either on imports or sales. The concessional 10 percent GST rate that currently applies in the tourism sector will be raised to 12 percent in November 2010, prior to alignment with the general GST rate of 15 percent by November 2011 in preparation for the introduction of the VAT. The design of and preparation for the VAT will be supported by technical assistance financed by the EU (€1 million has been set aside for this purpose in 2010).

14. **The reforms are expected to be broadly revenue neutral over the medium-term and will be accompanied by efforts to modernize and reinforce revenue administration.** With a view to establishing a level playing field for all businesses by the time of the VAT introduction, we have also maintained our policy of not providing new tax incentives and exemptions and made progress on our goal to phase out existing ones.

15. **Several steps have been taken to improve SRC governance, including Cabinet approval of a new organizational structure in December 2009 and the passing of the Revenue Administration Act and the Business Number Act.** We plan now to accelerate the restructuring of SRC operations through the setting up of an audit group focused on large taxpayers. The new structure is expected to be fully operational by July 2010. On customs, we are starting to implement the customs reform strategy and implementation plan that the Cabinet approved in March. We also plan to submit to National Assembly a new Customs Management Act by end- September 2010.

PUBLIC FINANCIAL MANAGEMENT AND EXPENDITURE REFORM

16. **We are making considerable progress towards strengthening public financial management, in line with recommendations from the IMF's Fiscal Affairs Department.** The introduction of a Treasury Single Account (TSA) in late 2009 represented a major step forward in our capacity to both monitor and control public expenditure and manage the government's cash balances. We will also introduce a new chart of accounts in the 2011 Budget with the Fund's technical assistance. We have set up a monitoring committee to follow up on the recommendations arising from audits conducted by the Auditor General (statutory) and internal auditors (ad hoc) in each government department on internal controls and procedures.

17. **Our fiscal policy objectives will be supported by strengthened budget processes.** Starting with the 2011 Budget, we will move to a medium-term budgeting framework, presenting the government's fiscal and economic projections over a three-year horizon. The 2011 budget process will commence in June 2010 with Cabinet's discussion of a budget strategy document, setting the fiscal context and establishing the government's priorities. Ministries and other budget dependent entities will then submit their recurrent and capital expenditure proposals to the Ministry of Finance using a standard template that will detail the costing. The Ministry of Finance's capacity to scrutinize these expenditure proposals will also be enhanced through increased resources, the introduction of formal expenditure

review procedures and detailed reconciliation of budget estimates with quarterly and year-end outcomes. In parallel, our macroeconomic and revenue forecasting capacity has been enhanced through the establishment of a dedicated branch within the Ministry of Finance which is now fully operational.

18. We are also working towards a more complete presentation of the budget.

The 2010 Budget document presented to National Assembly was more detailed than in previous years, including for the first time a full presentation of revenues, expenditure and financing, an annual borrowing plan and a medium-term debt strategy. The 2011 Budget will build on these achievements by presenting a more comprehensive analysis of the fiscal position and macroeconomic context and incorporating the Pension Fund into the general government accounts. A related work stream is the review of the operations of all public sector agencies, based on a classification by type of economic activity. Based on this classification, we have started to compile and publish consolidated general government accounts, consistent with international standards. It is also anticipated that this analysis will lead to the commercialization of some existing public sector agencies, in line with our broader strategy of reducing the role of the state in the economy.

19. We are committed to improving public infrastructure, including addressing urgent needs in the utilities sector. We will develop a memorandum of understanding between the government and Public Utilities Company (PUC) to promote strengthened collaboration on investment plans and tariff schedules in the utilities sector and will enhance financial oversight of PUC through the Public Enterprise Monitoring Division (PEMD) in the Ministry of Finance. While further work is required to identify priority investments in the utilities sector (e.g., electricity, water and sewage), following several years of under-investment, the government's preliminary estimate is an investment need of over SR 2 billion over the next three years. The Public Utilities Company (PUC) has limited capacity to finance this investment internally, with the existing tariff structure – specifically, a substantial subsidy for household electricity consumption – insufficient to meet the costs of supply. The government's objective is to improve the quality of service provision in the utilities sector, which over the medium-term will require PUC to implement a tariff policy that is consistent with full cost recovery and meeting future investment needs. To this effect, we will commission a comprehensive study of the tariff structure, production costs and the quality of service provision in the utilities sector that will make recommendations to government on the optimal tariff policy in July 2011. The study will also include a social impact statement to inform the government's response. Meanwhile, most of the capital expenditure contingency is being directed to urgent utilities investment in 2010.

20. Our social safety net is successfully delivering targeted income support without undermining incentives to work. The number of income support recipients has decreased over the last year, in line with strengthened compliance and is expected to decline further as the economy recovers and job prospects improve. We have expanded training programs for the unemployed and those exiting the public service through the voluntary departure scheme

to ensure that any period of unemployment is transitory. We are also working with the World Bank to fine-tune the targeting of our social safety net, including establishing a relationship to the minimum wage that preserves work incentives over time.

21. We will strengthen the Ministry of Finance’s budgetary oversight of the Social Security Fund (SSF), improve the management of its assets , and initiate work on a medium-term strategy that will put our social security institutions (including the Pension Fund) on an actuarially sound basis. Today, the SSF has substantial financial assets, including sizeable cash balances with commercial banks. The financial operations of the SSF will change when the current social security contribution is replaced with the personal income tax. The Ministry of Finance will conduct a financial audit of the SSF, strengthen budgetary oversight of the SSF’s financial operations and will help the SSF to rationalize its cash management. Concurrently, the World Bank is providing technical assistance on the institutional arrangements for merging the Social Security Fund and the Social Welfare Agency, reviewing the functions of the SSF and advising on the transfer of its assets and liabilities. Furthermore, as part of our medium-term reform program, we will also initiate an actuarial audit of the SSF as well as work on a comprehensive asset management strategy for the general government sector that aligns with the government’s debt management strategy and takes into account accruing liabilities.

22. Efforts to improve transparency and strengthen institutional capacity in the area of fishing licenses remain a work in progress. There has been a marked decline in the number of licensed fishing vessels operating in our waters since 2008, when piracy in the Indian Ocean became more prevalent. Work is continuing on the disclosure of fishing license agreements and the construction of an economic and financial model to support more informed fishing licensing and natural resource management policies (see ¶27 of previous MEFP).

A. Monetary and Exchange Rate Policies

23. Monetary policy will continue to be based on reserve money targeting through the use of indirect instruments. We will continue to use repos to guide short-term interest rates. Furthermore, we will be lengthening the maturity structure of the Deposit Auction Arrangement (DAA), which will provide for more flexibility in open market operations.

24. We are continuing to enhance coordination between monetary and fiscal policy to promote sound liquidity management and financial sector deepening. To this end, we will continue to make extensive use of the liquidity forecasting and reserve money programming framework. The CBS and the Ministry of Finance will continue to work closely on the T-bill issuance profile to promote the smooth functioning of the market and provide for the development of a yield curve. We will also communicate the calendar of T-bill issuance weekly for the following four week period and inform the market of the quantity of paper to be issued three days ahead of the auction to improve predictability and

assist banks in better managing their liquidity. The CBS will also formalize the arrangements for its use of government securities as a monetary policy instrument through a memorandum of understanding with the Ministry of Finance by end-June 2010.

25. **We remain committed to a floating exchange rate regime, which has served Seychelles well during the initial phases of our economic reforms.** The CBS will maintain its policy of intervening in the foreign exchange market only to smooth out excessive volatility and ensure orderly market conditions. The CBS will continue to work closely with banks and make use of technical assistance from the IMF, to improve the efficiency of the inter-bank foreign exchange market. Within this context, we are working on a code of conduct which will guide all participants in the foreign exchange as well as in the money market.

B. CBS Governance and Capitalization

26. **The implementation of an integrated (core) banking system is on course for completion by the fourth quarter of 2010.** This project will assist the CBS to (i) significantly improve the efficiency of its operations; (ii) modernize banking services; and (iii) significantly minimize IT risks. The implementation and license agreements have been signed by CBS and the selected vendor and a detailed project plan has been agreed to by the two parties. Work has already started and a complete gap analysis is being conducted by the selected vendor with the assistance of the external auditors.

27. **The CBS is undercapitalized, which if left unaddressed, could constrain its ability to implement prudent monetary policies.** Significant valuation losses in 2009, due to the appreciation of the rupee, have affected CBS's distributable profits (R40.0 million). With the 2009 results, 50 percent of the distributable profit equivalent to R20.0 million was retained to build up CBS capital which currently stands at 2.68 percent of monetary liabilities. As per the CBS Act, the government will implement a one-time recapitalization in 2010, boosting CBS capitalization to 10 percent of monetary liabilities by the end of the year. This will strengthen the balance sheet of the CBS and enhance its portfolio of tradable securities to be used in open market operations.

28. **As external reserves continue to accumulate, the CBS will need to continue to strengthen its reserve management activities.** Given its internal capacity constraints, we consider it premature at this stage to use commercial asset managers to manage a portion of our reserves, and instead will use the services of the World Bank's Reserve Advisory and Management Program (RAMP) and the Asset Management services of the Bank for International Settlement (BIS). The World Bank and the BIS have been approached to conduct a peer review of the CBS' reserve management activities (investment guidelines, investment committee etc). These institutions are expected to provide technical assistance in the area of capacity building, training of CBS internal managers in order to adequately manage the Bank's reserves, as well as investing a portion of CBS' external reserves.

29. **A reputable international audit firm is conducting a thorough risk assessment of the central bank to improve its internal controls.** As part of the assessment the team will also provide training to CBS officers in the way forward to address these risks. CBS management is committed to monitor risks on a permanent basis and to ensure that high risk areas are properly mitigated, and that the internal audit functions of the Bank are strengthened.

30. **CBS plans to complete the introduction of a business continuity plan (BCP) by end-2010.** A contract will be tendered by mid-June to a consulting firm to assist it in this exercise. The first BCP will cover the priority services offered by the CBS and this will later be expanded to incorporate all other services.

C. Financial Sector Reforms

31. **We will continue our efforts towards implementing a risk-based approach to supervision, in line with the Fund technical assistance recommendations.** This is expected to be fully operational by mid 2011. Frequent onsite examinations are being conducted as per the manuals developed with the IMF's technical assistance. Minimum capital for banks has been doubled, with a three year transition period granted to existing banks.

32. **We remain committed to adopt the best supervisory practices in the region. CBS will implement the Banking Supervision Application software²** to strengthen its supervisory process, especially offsite supervision. This is expected to be fully operational beginning 2011.

33. **The CBS continues to be proactive in its effort to safeguard the financial sector stability.** At the request of CBS, the Toronto Centre³ has agreed to provide training on crisis preparedness, tentatively in August when the main sections of the crisis preparedness plan will be drafted. This will document the process to manage financial crises and promote coordination between authorities.

34. **Seychelles will continue its efforts to promote transparency in the offshore financial sector** through strengthened supervision by the central bank in coordination with the Seychelles International Business Authority, and the Financial Intelligence Unit. To that effect a two phase review is being conducted by the Global Forum on Transparency and Exchange of Information for Tax Purposes which is expected to be completed by September 2010.

² Developed initially by ESAF/SADC, which is continuously being upgraded.

³ This is an institution that provides technical assistance in the area of financial supervision. Both the IMF and the World Bank are represented at the Board of the Toronto Centre.

35. **We are committed to encouraging a sound and efficient insurance sector that promotes policyholder confidence.** The CBS has submitted to First Initiative a project proposal for technical assistance to strengthen the supervisory process of insurance supervision. This will include review of the regulatory framework and preparation of manuals for conducting examination of insurance and insurance-related companies.

36. **We will continue to modernize the national payment system.** Several important steps were taken in 2009 and in the first quarter of 2010, including the establishment of a complete requirements and standards document for electronic funds transfers that replaced the manual settlement system. The adoption of the new cheque standard documents in July 2009; the new clearing house rules in April 2010; and the introduction of the National Clearing and Settlement system bill in June 2010 will facilitate the introduction of the Electronic clearing house system. The CBS will continue to promote the use of electronic funds transfer and the use of plastic card, as well as implement a real time gross settlement system in 2011/2012.

D. External Sector Policies

EXTERNAL DEBT RESTRUCTURING

37. **We are making considerable progress in normalizing relations with external creditors.** To date, restructuring agreements covering approximately US\$575 million, or around 85% of the debt eligible for restructuring have been reached. In aggregate, these agreements have cancelled approximately US\$310 million in principal, accrued interest, and other charges. Remaining balances have by and large been rescheduled over periods exceeding 17 years at low rates of interest.

38. **In February 2010, the country's commercial debt exchange offer closed successfully with a 50% debt cancellation.** The transaction, which was launched in December 2009 following a period of discussions with key affected creditors, sought to restructure the bulk of Seychelles's external commercial debt. Claims with a face value of US\$320 million were eligible to participate in the exchange offer, including the US\$230 million Eurobond, the €55 million Amortizing Notes and two commercial bank loans held by three banks. The debt exchange was supported by a guarantee from the African Development Bank. Upon the expiry of the exchange offer period, 84% of the face value of the Eurobond had been tendered, along with 100% of the Amortizing Notes and the two bank loans. After the triggering of the collective action clause in the Eurobond by bondholders, Seychelles achieved 100% participation for the exchange. This transaction alone cancelled approximately US\$225 million in principal, accrued interest, and other charges.

39. **Seychelles will persevere with its efforts to conclude restructuring agreements on comparable terms with the few remaining commercial bank and non-Paris Club official bilateral creditors holding claims.** Since the approval of the Extended Fund

Facility, bilateral restructuring agreements have been reached with four commercial banks covering eight facilities. The three smallest loans in this category were bought back by Seychelles at steep discounts to face value, with the remainder being rescheduled at par over the long term at low interest rates. The vast majority of these claims were converted into new rupee-denominated loans or bonds. The Government has reached comprehensive restructuring agreements with Libya and Malaysia, and is close to reaching agreements with two other non-Paris Club official bilateral creditors. The Government expects to sign its remaining Paris Club bilateral agreements ahead of the second tranche of Paris Club debt cancellation on 1 July 2010.

TRADE POLICIES

40. **We remain committed to further liberalize our foreign trade policies.** We remain on track for the implementation of the COMESA common external tariff by 2013. As a preliminary step, we have introduced in the 2010 budget a common excise tax on petroleum, motor vehicles, alcohol and cigarettes that applies equally to imports and locally-produced items. A roadmap has been established and a chief negotiator has been appointed to prepare for the negotiations to accede to the World Trade Organization.

E. Public Enterprise Reforms

41. **The government is pursuing a public enterprise reform strategy aimed at achieving greater efficiency, transparency and accountability.** The Cabinet has approved a detailed work plan for the Public Enterprise Monitoring Division (PEMD) directed at reinforcing the monitoring and control of public enterprises, strengthening governance, reducing dependence on public funding and minimizing financial risks to the state. The legal basis for this work was established with the approval of the Public Enterprise Monitoring and Control Act (the Act) by the National Assembly in late 2009, mandating strengthened oversight and reporting arrangements for public enterprises and setting uniform governance rules. Financial audits will continue to be regularly examined by the Public Accounts Committee of the National Assembly, in line with the Act. The Public Enterprise Monitoring Division has finalized strategic assessments for the largest public entities—drawing on recently concluded external financial audits and management audits. All these public entities have submitted statements of intent and action plans. They have taken the necessary steps to establish the following committees: procurement and investment, audit and finance, and remuneration, in line with audit recommendations. We have also commissioned an international aviation consultant to conduct a strategic assessment of the future of Air Seychelles and its ancillary services. The consultant is scheduled to report findings to the government in August 2010.

42. **The government, together with the CBS, is strengthening the management and oversight of public financial institutions and assessing the case for continued state ownership.** It is government's policy to privatize Nouvobanq in the context of our medium-

term strategy. Regulatory oversight of the Development Bank of Seychelles (DBS) and the Housing Finance Company (HFC) has shifted from the Ministry of Finance to the CBS, leveraging off the CBS' financial sector expertise. The First Initiative is scheduled to assess the government's strategic options with regard to both DBS and HFC in the second half of 2010. We recognize that, in the longer term, privatization of the two publically-owned deposit taking institutions - Seychelles Savings Bank and Nouvobanq - could bring new technology, strengthen management and fresh capital to our banking system, stimulate competition and enhance the quality of bank services. In the near-term, however, both institutions are performing well financially, present limited risk to the government's balance sheet and are playing a leading role in promoting financial intermediation and credit creation. An IFC mission is scheduled for August to explore the government's options with regard to Nouvobanq and add more definition to the time of its future sale.

F. National Statistics

43. **We remain strongly committed to improving the quality, periodicity, and timeliness of macroeconomic and financial statistics.** A new National Statistics Act (NSA) which will be presented to the Cabinet in June 2010, reinforcing the National Statistics Bureau's (NSB) independence and strengthening its mandate to collect data. We are moving to address deficiencies in key macroeconomic data – especially GDP estimates, and external sector statistics –to improve their usefulness for economic analysis and policy formulation. To this effect, a strategic plan will be adopted by end-January 2011. We will bring Seychelles in line with international best practice, by aiming to implement the IMF's Special Data Dissemination Standard (SDDS) and the Balance of Payments and International Investment Position Manual 6 by 2011. The Ministry of Employment will reinforce its efforts to produce high-frequency labor market data. We have requested technical assistance from the IMF Statistics Department (on fiscal and national accounts) and the World Bank (to strengthen the management and operations of the NSB).

G. Program Monitoring

44. **The EFF-supported program will be monitored by semi-annual program reviews, with quarterly quantitative performance criteria and disbursements.** The quarterly quantitative performance criteria (QPCs) for 2010 are shown in Table 1. The structural benchmarks for 2010 are shown in Table 2. The nonzero ceilings on the contracting or guaranteeing of external debt are to allow for budgeted public project finance and program support from multilateral institutions exclusively.

45. **The completion of the second review under the EFF will be based on meeting the QPCs at end-September 2010.** The second program review will be based on meeting the end-September 2010 QPCs and is scheduled to be completed by end-December 2010. It will focus on the 2011 Budget, progress in implementing the tax reform, and in strengthening

public financial management. Quarterly financing assurance reviews will continue as long as public debt arrears remain outstanding.

46. **The attached Technical Memorandum of Understanding (TMU) defines the quantitative performance criteria, indicative targets and adjusters under the program.** Seychelles will avoid introducing new exchange restrictions, multiple currency practices, or bilateral payments agreements in contradiction with Article VIII of the IMF's Articles of Agreement and imposing any import restrictions for balance of payments reasons. We stand ready to adopt any additional measures, in consultation with IMF staff, which may become necessary to ensure program success.

Table 1. Seychelles: Quantitative Performance Criteria Under the EFF, December 2009–December 2010
(Millions of Seychelles rupees; end-of-period)

	2009			2010								
	December			March			June		September		December	
	Program	Adjusted	Actual	Program	Adjusted	Prel.	Program	Rev.prog.	Program	Rev.prog.	Program	Rev.prog.
Performance criteria												
Net international reserves of the CBS, millions of U.S. dollars (floor) ¹	130	138	153	133	137	192	128	128	142	142	168	168
Reserve money (ceiling)	1,480	...	1,296	1,537	...	1,424	1,592	1,592	1,676	1,676	1,753	1,753
Primary balance of the consolidated government (cumulative floor) ^{2,3}	1,375	...	1,586	261	...	298	437	455	659	668	761	823
The contracting or guaranteeing of new external debt by the public sector (Millions of U.S. dollars; cumulative ceiling) ²	39	...	30	2	...	0	3	3	13	13	37	37
The contracting or guaranteeing of new short-term external debt by the public sector (Millions of U.S. dollars; cumulative ceiling) ²	0.0	...	0.0	0.0	...	0.0	0.0	0.0	0.0	0.0	0.0	0.0
The accumulation of external payments arrears by the public sector (ceiling) ³	0.0	...	0.0	0.0	...	0.0	0.0	0.0	0.0	0.0	0.0	0.0
The accumulation of domestic payment arrears by the public sector (ceiling)	0.0	...	0.0	0.0	...	0.0	0.0	0.0	0.0	0.0	0.0	0.0
Memorandum items:												
External non project financing (millions of U.S. dollars; cumulative) ²	-17.2	...	-9.3	1.7	...	5.6	1.8	1.8	9.0	9.0	31.8	31.8
Program financing support	19.6	...	11.2	0.0	...	8.7	0.0	0.0	0.0	0.0	19.6	19.6
Cash payments on foreign debt service	48.1	...	32.0	1.8	...	3.9	5.8	5.8	6.9	6.9	9.2	9.2
External budget grants	11.3	...	11.5	3.5	...	0.8	7.6	7.6	15.9	15.9	21.4	21.4
Program accounting exchange rates												
SR/US\$ (end-of-quarter)	11.00	...	11.25	11.00	...	11.00	11.00	11.75	11.00	11.75	11.00	11.75
US\$/Euro (end-of-quarter)	1.48	...	1.43	1.48	...	1.48	1.48	1.27	1.48	1.27	1.48	1.27
US\$/UK pound (end-of-quarter)	1.65	...	1.62	1.65	...	1.65	1.65	1.48	1.65	1.48	1.65	1.48
US\$/SDR (end-of-quarter)	1.59	...	1.57	1.59	...	1.59	1.59	1.49	1.59	1.49	1.59	1.49

Sources: Seychelles authorities and IMF staff estimates and projections.

¹ The floor will be adjusted downward (upward) for any shortfall (excess) in external nonproject financial support from that assumed in the program.

² Cumulative flows from the beginning of the calendar year.

³ The nonaccumulation of new external payment arrears constitutes a continuous performance criterion. Excludes arrears for which a rescheduling agreement is sought.

Table 2. Seychelles: Structural Benchmarks, 2009–10

Measure	Target date	Macroeconomic rationale	Status
Introduce a treasury single account.	End-September 2009	To strengthen public finances, key to sustainability efforts.	Met. The TSA is leveraging progress on PFM.
Adopt foreign reserves management investment guidelines.	End-September 2009	To ensure management of foreign reserves in line with best international practice.	Met. The CBS Board adopted guidelines on September 25, 2009.
Adopt Public Enterprise Monitoring and Control act.	End-September 2009	To improve oversight over public enterprises and reduce quasi-fiscal risks.	Met. Parliamentary approval secured on September 28, 2009.
Complete CBS procedures manual (MEFP, ¶46).	End-December 2009	To support improved efficiency and transparency in monetary policy.	Met. The manual was approved on December 29, 2009.
CBS to publish commercial bank supervision report (MEFP, ¶46).	End-December 2009	To promote competition and transparency in the banking system.	Met. Published on the CBS website on December 29, 2009
Amend the Business Tax Act in line with the tax reform strategy (MEFP, ¶22).	End-December 2009	To broaden the tax base, modernize tax policy, and remove distortions.	Met.
Cabinet approval of customs reform strategy and implementation plan (MEFP, ¶23).	End-March 2010	To transform customs into a modern and efficient entity.	Met. The approval was secured on March 17, 2010.
Publish general government fiscal statistics (MEFP, ¶29).	End-April 2010	To enhance transparency and coverage of public finance.	Met. Fiscal statistics were published on April 23, 2010
Submit to National Assembly a new customs management act (MEFP, ¶23).	End-June 2010	To institutionalize best international practice and a better business climate.	Moved to end-September 2010, to address regional harmonization issues.
Introduce Personal Income Tax (MEFP, ¶22).	July 1, 2010	To broaden the tax base and provide for more equitable taxation.	
Introduce budget submissions protocols and procedures (MEFP, ¶28).	End-July 2010	To strengthen budget preparation.	
Adopt a new chart of account for the 2011 budget (MEFP, ¶29).	End-November 2010	To ensure proper classification and increase efficiency of the budget as a policy tool.	
Submit to National Assembly a bill creating a national clearing house and settlement system (MEFP, ¶44).	End-December 2010	To introduce necessary financial infrastructure for improved efficiency and reduced risks.	

Table 3. Seychelles: Principal Structural Reform Measures Implemented in November 2009–April 2010

Action	Timing
Fiscal Policy	
Increase in GST on tourism to 10 per cent	November 2009
Extend budget coverage for 2010 to include: full presentation of revenues, expenditure, and financing; discussion of macroeconomic assumptions and objectives; fiscal targets and objectives; and an annual borrowing plan.	December 2009
Publish a medium term debt strategy with the 2010 Budget	December 2009
Introduction of Revenue Administration Act and Business Number Act.	December 2009
Introduction of a revised Business Tax Act	December 2009
Reduction in cascading through levying GST on either imports or sales	December 2009
Partial conversion of Trade Taxes to Excise Duties (petroleum, cigarettes and alcohol)	January 2010
Extend partial excise on petroleum to PUC	January 2010
Introduction of a new public sector wage grid	January 2010
Introduction of a new Budget calendar	March 2010
Publication of monthly fiscal report on the Ministry of Finance website	March 2010
Cabinet approval of the Customs Reform Strategy and implementation plan	March 2010
Public Enterprise Reform	
Secure services of aviation consultant for strategic assessment of Air Seychelles	November 2009
Cabinet approval of a public enterprise reform strategy and work plan for PEMD	December 2009
Commence establishment of performance benchmarks for public enterprises	December 2009
CBS Governance and Capitalization	
Completion of the CBS Procedures Manual	December 2009
Publication of the Commercial Bank Supervision Report	December 2009
Introduction of new methodology for calculating application and annual license fees for domestic and offshore banks	March 2010
Adopt IFRS for 2009 CBS Accounts	March 2010
National Statistics	
Publication of the General Government Fiscal Statistics	April 2010

Table 4. Seychelles: Principal Structural Reform Measures in Progress at May 2010

Action	Timing
Fiscal Policy	
Cabinet approval of 2011 Budget Strategy	June 2010
Introduction of a new Auditor General's Act	June 2010
Establish guidelines for government guarantees	June 2010
Introduce standardized tender bidding document for all public procurement	June 2010
Half-yearly budget review of expenditure by all government departments	July 2010
Establish a comprehensive Government Assets Register	August 2010
Adopt a new chart of accounts for the 2011 Budget	November 2010
Determine budget treatment of all budget dependent agencies	December 2010
Budget management training for departmental budget officers	Jan – Dec 2010
Revise Financial Instructions and Accounting Manual	March 2011
Introduction of a new Public Finance Law	September 2011
Review the Accounting Standards of Financial Statement to follow International Public Sector Accounting Standards (IPSAS)	September 2011
Build capacity in the Ministry of Finance to analyze capital expenditure proposals	2010-11
Tax Reforms	
Set up an audit group to focus on large taxpayers	July 2010
Submit a new Customs Management Act to National Assembly	September 2010
Increase GST on tourism to 12%	November 2010
Public Enterprise Reform	
Commission external financial audit of DBS and HFC	June 2010
Engage FIRST Initiative on strategic options assessment of DBS and HFC	July 2010
Engagement of IFC to advise on the government's options on Nouvobanq	August 2010
Implementation plan in response to external strategic assessment of Air Seychelles	October 2010
Commission a comprehensive study of the tariff structure, production costs, and quality of service provision in the utilities sector	2010
Implement completed reform action plans for major public enterprises	2010–11
CBS Governance and Capitalization	
Present Electronic Clearing and Settlement System Bill to National Assembly	June 2010
Produce financial survey encompassing bank and nonbank financial institutions	December 2010
Introduce integrated IT-based accounting framework at CBS (core banking system)	December 2010
Introduce a business continuity plan at CBS	December 2010
Adopt a crisis preparedness plan for financial system	December 2010
Progressively raise capitalization of CBS to 10 percent of monetary liabilities	December 2010
Gradually raise minimum capital requirements for domestic banks.	2010–12

Implementation of real time gross settlement system. 2011–12

National Statistics

Adopt a strategic plan to upgrade national statistics September 2010

Implement Balance of Payments and International Investment Position Manual 6 2011

Implement SDDS 2011

ATTACHMENT II**SEYCHELLES: TECHNICAL MEMORANDUM OF UNDERSTANDING**

1. This technical memorandum of understanding presents the definitions of variables included in the quantitative performance criteria and indicative targets set out in the memorandum of economic and financial policies (SMEFP), the key assumptions, and the reporting requirements of the Government and the Central Bank of Seychelles (CBS) needed to adequately monitor economic and financial developments. The quantitative performance criteria and indicative targets, and the benchmarks for 2010 are listed in Tables 1 and 2 of the SMEFP, respectively.

I. QUANTITATIVE PERFORMANCE CRITERIA**A. Net International Reserves of the CBS (Floor)****Definition**

2. Net international reserves (NIR) of the CBS are defined for program monitoring purposes as reserve assets of the CBS, minus reserve liabilities of the CBS (including liabilities to the IMF). Reserve assets of the CBS are claims on nonresidents that are readily available (i.e., liquid and marketable assets, free of any pledges or encumbrances and excluding project balances and blocked or escrow accounts, and bank reserves in foreign currency maintained for the purpose of meeting the reserve requirements), controlled by the CBS, and held for the purpose of intervening in foreign exchange markets. They include holdings of SDRs, holdings of foreign exchange, demand and short-term deposits at foreign banks abroad, fixed-term deposits abroad that can be liquidated without penalty, and any holdings of investment-grade securities. Reserve liabilities of the CBS comprise liabilities to nonresidents contracted by the CBS, any net off-balance sheet position of the CBS (futures, forwards, swaps, or options) with either residents or nonresidents, including those to the IMF.

Calculation method

3. For program monitoring purposes, reserves assets and liabilities at each test date, must be converted into U.S. dollars using the end of period exchange rates assumed in the program.

Adjusters

4. The floor on the CBS's NIR will be adjusted upward (downward) by the amount by which the external nonproject loans and cash grants exceeds (falls short of) the amounts assumed in the program (SMEFP Table 1). The floors will also be adjusted upwards (downwards) by the amount that external debt service payments fall short (exceed) the amounts assumed in the program.

B. Reserve Money (Ceiling)

Definition

5. Reserve money is equivalent to currency issued and deposits held by financial institutions at the central bank (bank reserves), including those denominated in foreign currencies. Evaluation of performance of reserve money with respect to the program ceiling will be done at the program accounting exchange rate.

C. Primary Balance of the Consolidated Government (Cumulative Floor)

6. The consolidated government primary balance from above the line on a commitment basis is defined as total consolidated government and social security fund revenues (excluding privatization and long-term lease income receipts) less all noninterest (primary) expenditures of the government and social security fund.

D. Public External Debt (Ceiling)

7. The ceiling applies to the contracting or guaranteeing of new external liabilities by the public sector (including the central government, the CBS, and all public agencies and parastatals for operations that are not directly linked to commercial activities). The ceiling does not apply to the use of Fund resources, operations related to external debt restructuring; normal import related credits; purchases of treasury securities by nonresidents; or borrowing by parastatals in the conduct of normal commercial operations. The non zero ceilings on the contracting or guaranteeing of external debt are to allow for normal public project finance and program support from multilateral institutions exclusively. Debt shall be valued in U.S. dollars at program exchange rates. A zero sub-ceiling on short-term external debt applies continuously to the contracting or guaranteeing of short-term external debt by the public sector, with an original maturity of up to and including one year.

8. For the purpose of this performance criterion, external debt is defined as foreign currency denominated debt, and the term “debt” has the meaning set forth in point No. 9 of the Executive Board’s Guidelines on Performance Criteria with Respect to Foreign Debt (Decision No. 12274-(00/85)). Debt is understood to mean a current, non contingent liability, created under a contractual arrangement through the provision of value in the form of assets (including currency) or services, and which requires the obligor to make one or more payments in the form of assets (including currency) or services, at some future points in time; these payments will discharge the principal and/or interest liabilities incurred under the contract. The ceiling on contracting official and officially guaranteed external debt includes all form of debt, including:

- (i) loans, i.e., advances of money to the obligor by the lender made on the basis of an undertaking that the obligor will repay the funds in the future (including deposits, bonds, debentures, commercial loans, and buyers credits) and temporary exchanges of

assets that are equivalent to fully collateralized loans under which the obligor is required to repay the funds, and usually pay interest, by repurchasing the collateral from the buyer in the future (such as repurchase agreements and official swap arrangements);

(ii) suppliers credits, i.e., contracts where the supplier permits the obligor to defer payments until some time after the date on which the goods are delivered or services are provided;

(iii) leases, i.e., arrangements under which property is provided which the lessee has the right to use for one or more specified period(s) of time that are usually shorter than the total expected service life of the property, while the lessor retains title to the property. The debt is the present value (at the inception of the lease) of all lease payments expected to be made during the period of the agreement excluding those payments that cover the operation, repair, or maintenance of the property; and

(iv) Arrears, penalties, and judicially awarded damages arising from the failure to make payment under a contractual obligation that constitutes debt are debt.

E. External Arrears of the Public Sector

9. The nonaccumulation of arrears to external creditors will be a continuous performance criterion under the program. External payments arrears for program monitoring purposes are defined as the amount of external debt service due and not paid within the contractually agreed period, including contractual and late interest. Arrears resulting from the nonpayment of debt service for which a clearance framework has been agreed or a rescheduling agreement is sought are excluded from this definition.

F. Budget Expenditure Arrears

10. The nonaccumulation of budget expenditure arrears will be a continuous performance criterion under the program. Budget expenditure arrears are defined as the sum of (1) any invoice that has been received by a spending agency from a supplier of goods, services, and capital goods delivered and verified, and for which payment has not been made within the contractually agreed period, or in the absence of a grace period, within 30 days; (2) unpaid wages, pensions, or transfers, pending for longer than 30 days to domestic or foreign residents, irrespective of the currency denomination of the debt.

II. DATA AND INFORMATION

11. The Seychelles authorities (government and CBS) will provide Fund staff with the following data and information according to the schedule provided.

The CBS will report

Weekly (within one week from the end of the period)

- Reserve money.
- Foreign exchange reserves position.
- A summary table on the foreign exchange market transactions.
- The results of the liquidity deposit auctions, primary treasury bill auctions, and secondary auctions.

Monthly (within four weeks from the end of the month)

- The monetary survey in the standardized report form format.
- The foreign exchange cash flow, actual and updated.
- Financial soundness indicators.
- Stock of government securities in circulation by holder (banks and nonbanks) and by original maturity and the debt service profile report.

The Ministry of Finance will report

Monthly (within two weeks from the end of the month):

- Consolidated government operations on a commitment basis and cash basis in the IMF-supported program format.
- The detailed revenues and expenditures of the central government and social security fund.
- Monthly accounts of the public nonbank financial institutions.
- Import and export data from the customs department.
- Monthly public debt report.

The government and CBS will consult with Fund staff on all economic and financial measures that would have an impact on program implementation, and will provide any additional relevant information as requested by Fund staff.

INTERNATIONAL MONETARY FUND

SEYCHELLES

**First Review Under the Extended Arrangement, Request for Modification of
Performance Criteria, and Financing Assurances Review—Informational Annex**

Prepared by the African Department
(In consultation with other departments)

June 15, 2010

Contents	Page
I. Seychelles: Relations with the Fund.....	2
II. Seychelles: Joint World Bank-IMF Work Program, 2010.....	6
III. Seychelles: Relations with the African Development Bank Group.....	8

I. SEYCHELLES: RELATIONS WITH THE FUND

(As of April 30, 2010)

I. Membership Status: Joined 6/30/77. Article VIII.

II. General Resources Account	<u>SDR Million</u>	<u>% Quota</u>
Quota	8.80	100.0
Fund holdings of currency	22.88	259.97
Reserve Position in Fund	0.00	0.04
III. SDR Department	<u>SDR Million</u>	<u>% Allocations</u>
Net cumulative allocation	8.28	100.0
Holdings	7.80	94.20
IV. Outstanding Purchases and Loans:		
Stand-by Arrangement	11.00	125.00
Extended Arrangement	3.08	35.00

V. Financial Arrangements:

<u>Type</u>	<u>Arrangement</u>	<u>Expiration</u>	<u>SDR Million</u>	
			<u>Amount Approved</u>	<u>Amount Drawn</u>
EFF	Dec 23, 2009	Dec. 22, 2012	19.80	3.08
Stand-By	Nov.14, 2008	Dec. 22, 2009	17.60	11.00

VI. Projected Obligations to the Fund (SDR Million: based on existing use of resources and present holdings of SDRs):

	<i>Forthcoming</i>				
	2010	2011	2012	2013	2014
Principal			3.41	5.50	2.42
Charges/interest	0.13	0.18	0.17	0.11	0.06
Total	0.13	0.18	3.58	5.61	2.48

VII. Implementation of HIPC Initiative: Not applicable**VIII. Safeguards Assessments:**

The Central Bank of Seychelles (CBS) was subject to a safeguards assessment with respect to the Stand-By Arrangement for Seychelles. The assessment completed in 2008 found high risks in all areas of the CBS's safeguards framework, and several measures were included in the program. An update assessment in relation to the Extended Fund Facility, which is underway, has found that the authorities have implemented most of the measures recommended by the 2008 assessment. In particular, governance oversight at the CBS is now exercised by the Board and management committees, and transparency improved through application of International Financial Reporting Standards and the publication of financial statements that have been audited in accordance with international standards. Some vulnerability remains, however, for which remedial measures are proposed.

IX. Exchange Rate Arrangement:

The exchange market was liberalized in November 2008 and resulted in elimination of all the restrictions on the making of payments and transfers for current international transactions that are subject to Fund approval under Article VIII Sections 2, 3, and 4. The exchange rate policy is floating. On May 27, 2010, US\$ 1 = SR 12.33 (mid rate).

X. Article IV Consultations:

Seychelles is currently under a three year Extended Arrangement, with semi-annual reviews.

XI. Technical Assistance (2004–March 2010):

Department	Head of Mission	Subject	Date
STA	Mr. Freeman	National Accounts/CPI	May/June 2005
MFD/LEG	Mr. Lonnberg	Strengthening Capacity in Critical Central Banking Areas, including AML/CFT-Legal, Institutional, and Supervisory Frameworks	July 2006
LEG	Mr. Beekarry	Advise on AML/CFT measures and the establishment of the FIU	September/October 2006
STA	Mr. Alexander	National accounts/CPI/GDDS	October/ November 2006
MCM	Mr. Bartholomew	Multipurpose mission: Monetary operations, monetary research, banking supervision, payment systems, foreign exchange markets, and nonbank financial institution supervision.	November/ December 2007
STA	Mr. Dessart	Dissemination of GDDS National Summary Data Page	April 2008
STA	Mr. Armknecht	Consumer price index	April 2008
MCM	Mr. Faulk	Banking supervision, drafting of new financial sector related regulations	April 2008
MCM	Mr. Robotham	National payment systems project	May/June 2008
FAD	Mr. Khemani	Strengthening expenditure rationalization and budget management	July 2008
LEG	Mr. Baban	Exchange Rate and Exchange Control Regimes	September 2008

Department	Head of Mission	Subject	Date
FIN	Mr. Hauge	Safeguards assessment	October 2008
FAD	Mr. Krelove	Reform of Tax Policy	January/February 2009
MCM	Mr. Bartholomew	Central Bank Capacity Building after the 2008 Float	February 2009
LEG	Mr. Baban	Reform of Exchange Rate Law	May 2009
STA	Mr. Jones	Government Finance Statistics	May 2009
MCM	Mr. Faulk	Bank Supervision	June 2009
MCM	Mr. Vollan	Monetary Operations	June 2009
MCM	Mr. Robotham	Payments Systems	June 2009
FAD	Mr. Ljungman	Public Financial Management	July 2009
LEG	Mr. Burns	Fiscal Law	July 2009
FAD	Mr. Kloeden	Tax Administration	September 2009
MCM	Mr. Sullivan	Accounting	October 2009
MCM	Mr. Faulk	Bank Supervision	October 2009
MCM	Mr. Robotham	Payments Systems	November 2009
STA	Ms. Razin	BoP Statistics	December 2009
MCM	Mr. Bartholomew	Central Bank Capacity Building	March 2010

XII. Resident Representative

None

II. SEYCHELLES: JOINT WORLD BANK-IMF WORK PROGRAM, 2010

(As of May 31, 2010)

Title	Products	Provisional timing of mission	Expected delivery date
A. Mutual Information on Relevant Work Programs			
Bank	<p>A. Strategy and analytical work</p> <p>Public Expenditure Review (PER, Phase 2)</p> <p>Joint Country Procurement Assessment Report (CPAR) and Country Financial Accountability Assessment (CFAA)</p> <p>Tuna industry management (TA – P118247)</p> <p>National Climate Change Strategy (TA – P118246)</p> <p>B. Ongoing and new projects</p> <p>GEF grant implementation (tsunami reconstruction, disaster management)</p> <p>Development Policy Loan (DPL 2)</p> <p>Statistical Capacity Building Project (STATCAP)</p> <p>Technical assistance on social security net and enhancing targeting of social assistance</p>	<p>October 2009</p> <p>July 2010</p> <p>n.a.</p> <p>March 2010</p> <p>March 2010</p> <p>March 2010</p> <p>June 2010</p>	<p>June 2010</p> <p>Ongoing</p> <p>September 2010</p> <p>April 2011</p> <p>October 2010</p> <p>October 2012</p> <p>July 2010</p>
Fund	<p>Program and surveillance work</p> <p>1. First Review under EFF</p> <p>2. Article IV Consultation and Second Review under EFF, including Debt Sustainability Analysis</p> <p>Technical assistance and capacity building</p> <p>1. FAD technical assistance on tax and customs reform</p> <p>2. MCM technical assistance on reforming the monetary policy framework (long-term monetary advisor, automation of interbank market, reserve money management) strengthening bank supervision, payments systems, and CBS governance.</p>	<p>May 2010</p> <p>October 2010</p> <p>Ongoing</p> <p>Ongoing</p>	<p>June 2010</p> <p>December 2010</p> <p>Ongoing</p> <p>Ongoing</p>
Title	Products	Provisional timing of mission	Expected delivery date
B. Requests for Work Program inputs			
Bank request to Fund	1. Medium-term macro-economic and fiscal framework to inform Public Expenditure Reviews	n.a.	Ongoing

Fund request to Bank	1. IFC assistance on strategic plans for Nouvobanq 2. FIRST Initiative support for strategic reform of government owned non-bank financial institutions 4. Strategy on improving business environment and promoting private sector investment 5. Develop strategy and policy recommendations to improve transparency and management of the fisheries sector	August 2010 Ongoing	December 2010 2010 June 2011 2010
C. Agreement on Joint Products and Missions			
Joint products	Joint mission in the context of the second review under the EFF to discuss a medium-term structural reform agenda focusing on: social safety net targeting; civil service reform, parastatal reform; and promoting private sector investment	October 2010	December 2010

III. SEYCHELLES: RELATIONS WITH THE AFRICAN DEVELOPMENT BANK GROUP

(As of May 31, 2010)

The African Development Bank Group commenced operations with the Republic of Seychelles in 1978 and has since approved 19 operations comprising 15 projects, one study and three lines of credit for the country. Cumulative approvals as of May 2010 (there were no approvals between 2001 and 2006 when the country was under sanctions) amounted to UA 84.87 million,¹ of which 73 percent was from the African Development Bank (ADB), 14 percent from the Nigeria Trust Fund (NTF), and the remaining 13 percent from the African Development Fund (ADF) (Table 1). Reflecting government priorities, most of the operations were in the social sector (46 percent). This was followed by the financial sector (16 percent), agricultural sector (15 percent), transportation (13 percent), water supply and sanitation (10 percent) and industrial sector (1 percent). Before sanctions were imposed, about 76.8 percent of the total commitments on all approved loans had been disbursed and the balance of 23.2 percent was cancelled after sanctions were applied.

The country was under sanctions with the African Development Bank Group since February 16, 2000 due to the arrears situation. The country cleared all the arrears (amounting to US\$46.75 million) in November 2006 and the African Development Bank Group consequently lifted all sanctions and started discussions on possible reengagement with the country. The process was boosted by the launching of a comprehensive reform program by the Government in November 2008. Following this, an Interim Strategy Note was approved by the Board on April 22, 2009. The ISN covers 2009 and 2010 and focuses on a single pillar namely supporting the Government's reform program to achieve sustainable growth. The lending program during this period consists of a policy-based operation in the form of a budget support loan amounting to €15 million, to be disbursed in two equal tranches of €7.5 million in 2009 and 2010. The operation was approved in July 2009 and the first tranche was disbursed in November 2009 while the second and final tranche is expected to be disbursed in the third quarter of 2010. In addition, there is an ongoing non-lending program under which the Bank Group is providing grant resources to the country, from the African Water Facility and the Middle Income Countries' (MIC) Technical Assistance Fund. Under the African Water Facility, a grant amounting to € 955,000 was signed in May 2008 to finance the preparation of the Water Development Plan aimed at improved water management and governance, and identifying priority investment projects for funding, in order to meet Seychelles' water needs up to 2030. The study is expected to be completed by December 2010. Under the MIC Technical Assistance Fund two grants have been approved to finance:

¹ UA 1 = US\$ 1.51112 as at May 31, 2010.

(i) a study (amounting to UA 600,000) approved in December 2008 aimed mainly to support human resource development, training and capacity building as well as the establishment of the Seychelles University Foundation; and (ii) a study (amounting to US\$ 500,000) approved in February 2009 to undertake the feasibility on a Submarine Cable System to link Seychelles to East Africa has already been completed. Another study on the Development of a Mariculture Master Plan (amounting to UA 280,000) is being processed.

The Bank approved an unprecedented policy based partial guarantee operation for US\$10 million on December 12, 2009 in support of an exchange bond offered to external commercial creditors in the context of the public debt restructuring effort. The guarantee was instrumental in generating a high participation in the debt exchange offer.

Table 1. Operations Summary as at 31 May 2010*

Operations since: 1978

Total Number of operations 19: 15 Projects, 1 Study; 3 Lines of Credit

Source of Financing	Commitments (UA million)	Percentage Share	Disbursed	
			Amount (UA million)	Percentage Disbursed
ADB	62.19	73	44.12	70.9
ADF/TAF	10.68	13	10.68	100.0
NTF	12.00	14	10.39	86.6
Total	84.87	100	65.19	76.8

* Excludes the grants from the African Water Facility and the MIC Technical Assistance Facility due to their unique nature and small magnitude.



Press Release No. 10/269
FOR IMMEDIATE RELEASE
June 30, 2010

International Monetary Fund
Washington, D.C. 20431 USA

IMF Completes the First Review Under the Extended Fund Facility Arrangement for Seychelles and Approves US\$3.3 Million Disbursement

The Executive Board of the International Monetary Fund (IMF) has completed the first review of the Seychelles' economic performance under the three-year Extended Fund Facility Arrangement (EFF). The completion of the review makes available a disbursement of SDR 2.2 million (about US\$3.3 million dollars), bringing total disbursements under the arrangement to SDR 5.28 million (about US\$7.8 million). The Board's decision was taken on a lapse of time basis.¹ The EFF for Seychelles became effective on December 23, 2009 in the amount of SDR 19.8 million (about US\$29.3 million, or 225 percent of Seychelles' quota in the Fund (see [Press Release No. 09/472](#)).

The Seychelles economy has proved remarkably resilient to the double crisis it experienced. Following a turnaround in its economic policies to address an external debt crisis and a global financial crisis in 2008, the country appears to have emerged from the recession. Real gross domestic product (GDP) grew by 0.7 percent in 2009 and growth is projected to recover further to 4 percent in 2010.

The program remains fully on track and all quantitative performance criteria at end-March 2010 were met. Economic policies continue to be anchored by prudent fiscal policies. Government revenue is exceeding expectations in 2010, facilitating the implementation of key public infrastructure projects, while the decision to save part of the revenue overperformance will strengthen fiscal and external sustainability. The maintenance of prudent policies has given credibility to the currency float introduced in November 2008. Inflation has virtually disappeared, allowing a reduction in key policy interest rates, and international reserves are being rebuilt.

Progress on structural reforms is also good. On tax reforms, the business tax was rationalized and a personal income tax introduced. The next challenges will be to further broaden the tax base, reduce tax rates, modernize customs, and introduce a value-added tax in 2012. The

¹ The Executive Board takes decisions under its lapse of time procedure when it is agreed by the Board that a proposal can be considered without convening formal discussions.

authorities have also strengthened public finance and central bank management and are starting to address the restructuring of several key public enterprises and financial institutions, with a view to reducing the risks to the government budget and fostering sustained private sector-led growth.

Restructuring of Seychelles' external debt is progressing well. Strong policy implementation has convinced most external creditors to bring back external debt to sustainable levels, including through the completion of a debt exchange with private creditors in February 2010.