



STATISTICS

Proposals for Dealing with Newly Identified Research Topics

**GFSAC MEETING
MAY 13-15, 2025**

David Bailey
IMF, Government Finance Division

Background

- Two framework documents for GFSM Update were agreed in September 2024
 - ▶ Process and Timeline for Updating the *GFSM 2014*
 - ▶ List of Research Projects for Updating the *GFSM 2014*
- This has resulted in 4 Task Teams and 68 GFS research projects
 - ▶ 36 research projects related to the SNA/BPM update
 - ▶ 32 GFS-specific research projects
 - ▶ **A heavy research program!**
- However, new topics for research keep arising
 - Further clarifications around GFS aspects of SNA/BPM changes
 - Additional compilation / practical guidance and examples
 - Entirely new topics not previously considered
 -

The Challenge

- **How do we decide which newly identified research topics are critical to progress when we already have such a large research program?**
- New research areas vary in size, so we could consider **only advancing the smaller less resource intensive topics**, but...
 - ▶ they will not always be critical
 - ▶ several smaller topics can be as or more resource intensive as one large one
- We could instead decide to **not take on any more research topics**, but
 - ▶ this could impair the usability of the new manual
 - ▶ some existing topics might not be implementable without further research
- **To address this challenge, we need a light-touch assessment process for deciding which newly identified research topics to advance**

Proposed Decision Tree

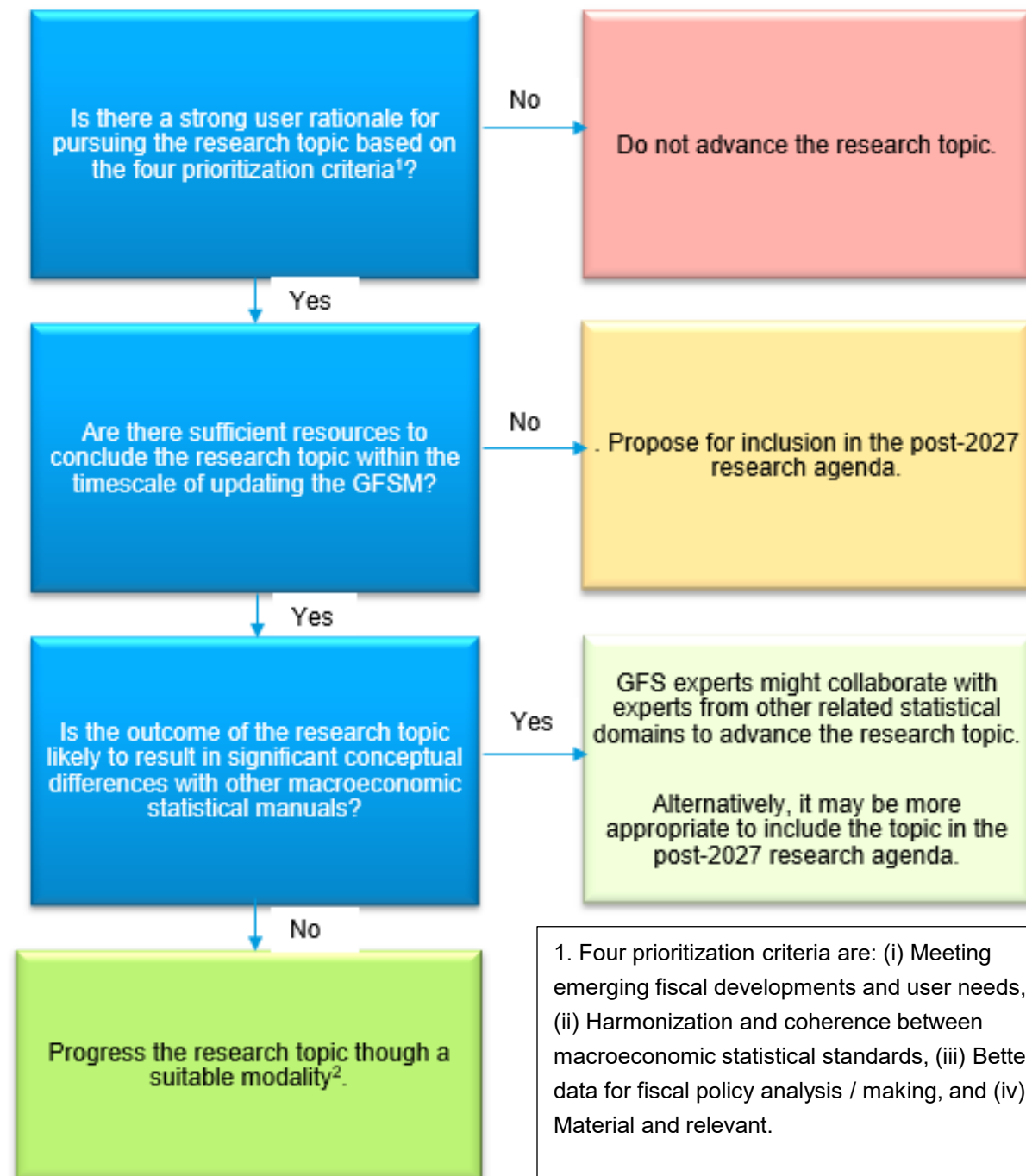
Three questions:

1. Is there a strong user need?
2. Are there sufficient resources?
3. Might outcome result in conceptual differences with other statistical manuals?

Governance:

- STA will make assessment and share with the GFSAC for optional comment

Decision tree addresses whether to advance a research topic, but not how to advance a research topic.



How to Advance New Research Topics

- Advance topic **within an existing research project**
 - minimal overheads (if project at an early stage)
 - appropriate when linkages / synergies with research project
- Advance topic **via an IMF-led “clarification note”**
 - resource implications are largely limited to IMF
 - appropriate when issues of clarification rather than concepts
- Advance topic **via an existing team of experts** (e.g., COFOG, MFS updates)
 - limits GFS resource implications
 - appropriate when topic already included in other research program
- Advance topic **via a new research project**
 - significant overheads involved and may increase TT pressures
 - **least favored option** – only to be used when no other options are feasible

Time Period for Taking on New Research

- It is expected that most potential new research topics will emerge from SNA/BPM-related research topics
 - should know these by early Autumn 2025
- **Cut-off date of March 2026**
 - no new research topics considered after this date
- Important to tightly control new research topics
 - could impact on delivery of overall work program

Application of this approach (1)

Research topic	Source	Strong user rationale?	Estimated resource requirements	Possible conceptual differences with SNA/BPM?	Proposal
Lease guidance - IPSAS vs GFSM	PR 1.6	Yes	Medium	No	Include in <i>GFSM Research Project 2.27</i> (existing mention in PID to be further clarified).
Market test implications from inclusion of rent and depletion	PR 1.27	Yes	Low	No	Include in <i>GFSM Research Project 2.1</i> (PID to be updated to include reference to this aspect).
Mandatory regulatory licenses: taxes vs. services	PR 1.24	Yes	Low	No	IMF-led clarification note.
Crypto assets created, issued and/or used by governments	PR 1.18	Yes	Low/Medium	No	IMF-led clarification note.

Application of this approach (2)

Research topic	Source	Strong user rationale?	Estimated resource requirements	Possible conceptual differences with SNA/BPM?	Proposal
Identifying and Measuring Government Data Assets	PR 1.11	Yes	Medium	No	New research project to advance with assistance of experts who worked on <i>Handbook on Measuring Data in the SNA</i> .
Emission trading schemes: free permits and cross border schemes	PR 1.22	Yes	Medium	Yes	Post-2027 Research Agenda. Joint research with SNA and BPM experts.
Recording of UN peacekeeping payments	IMF CD	Yes	Low	Yes	Post-2027 Research Agenda. Joint research with SNA and BPM experts.

Questions for the GFS Advisory Committee

1. Do you agree with the proposed approach for assessing and advancing identified new possible areas for research?
 - Are there any further refinements you would like to make?
 - Comments you would like to provide?
2. Do you agree with the proposed outcomes described in Annex 2 for the seven newly identified research topics?
 - If not, what changes would you propose?

Thank you!