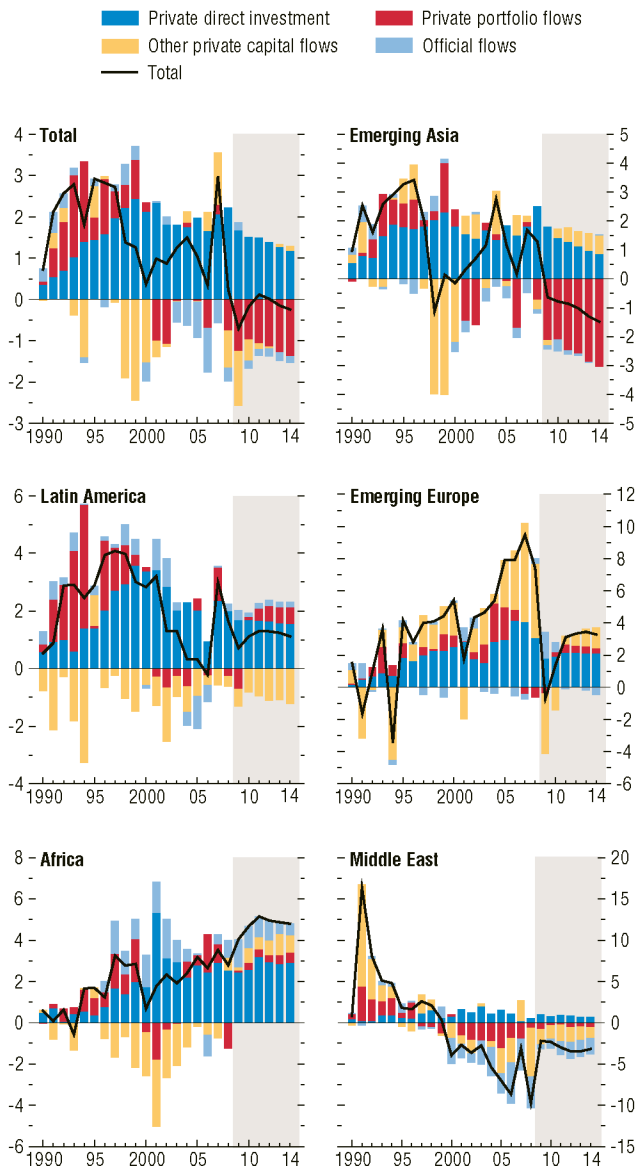


Figure 1.13. Net Capital Flows to Emerging and Developing Economies

(Percent of GDP)

Net capital flows to emerging and developing economies are projected to remain subdued for many years as global deleveraging continues. Emerging Asia and the Middle East are expected to see significant outflows related to investment of current account surpluses, while other regions are generally expected to see much lower rates of inflows than in recent years.



Source: WEO database.