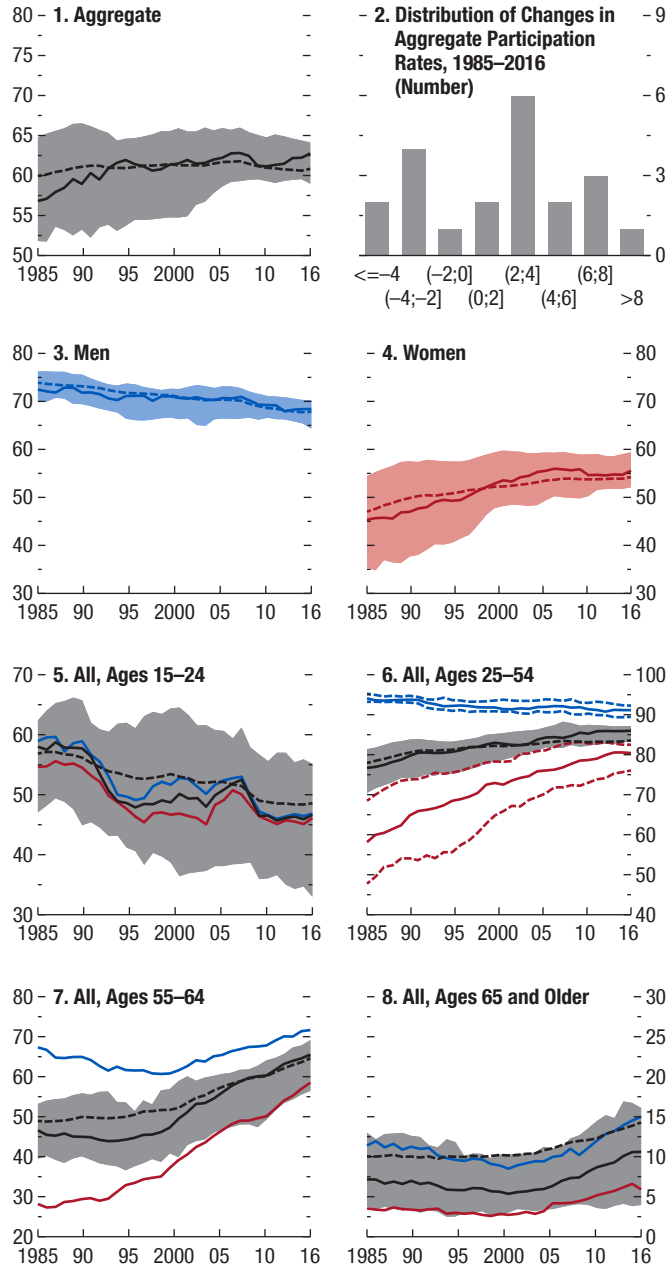


Figure 2.3. Labor Force Participation Rates by Gender and Age
(Percent, unless noted otherwise)

Trends in participation rates in advanced economies also differ dramatically by gender and age groups.



Sources: Organisation for Economic Co-operation and Development; and IMF staff calculations.

Note: In panels 1, 3, and 4, lines show median; shaded areas show interquartile range; and dotted lines denote population-weighted average. In panels 5–8, black lines show median; gray shaded areas show interquartile range; and black dotted lines show population-weighted average for total age group, respectively. Blue and red lines show median for men and women, respectively. In panel 6, dotted blue and red lines show interquartile range for men and women, respectively. Figure is based on a balanced panel of 21 advanced economies.