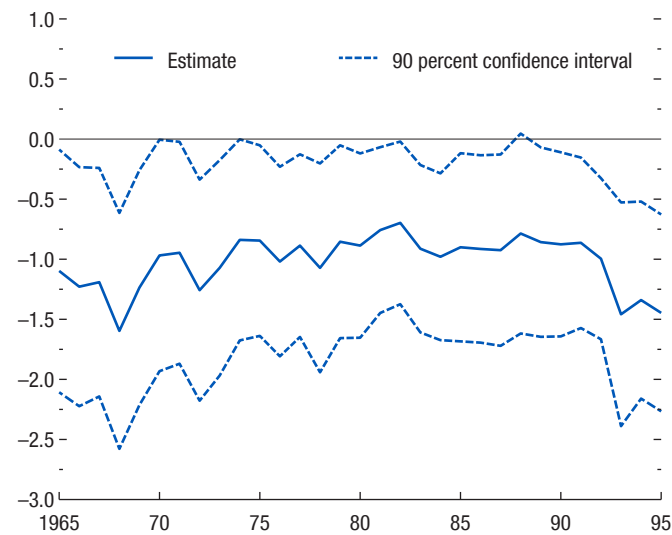


Figure 3.11. Effect of Temperature Increase on Real per Capita Output Estimated at the Temperature of the Median Low-Income Developing Country over Time
(Percent; years on x-axis)

The contemporaneous effect of temperature shocks on per capita output has remained relatively constant over time.



Source: IMF staff calculations.

Note: The figure depicts the effect of a 1°C increase in temperature at horizon 0 estimated at the median low-income developing country temperature (25°C), over a 20-year rolling window. Each point estimate is for a period ($t, t + 20$).