

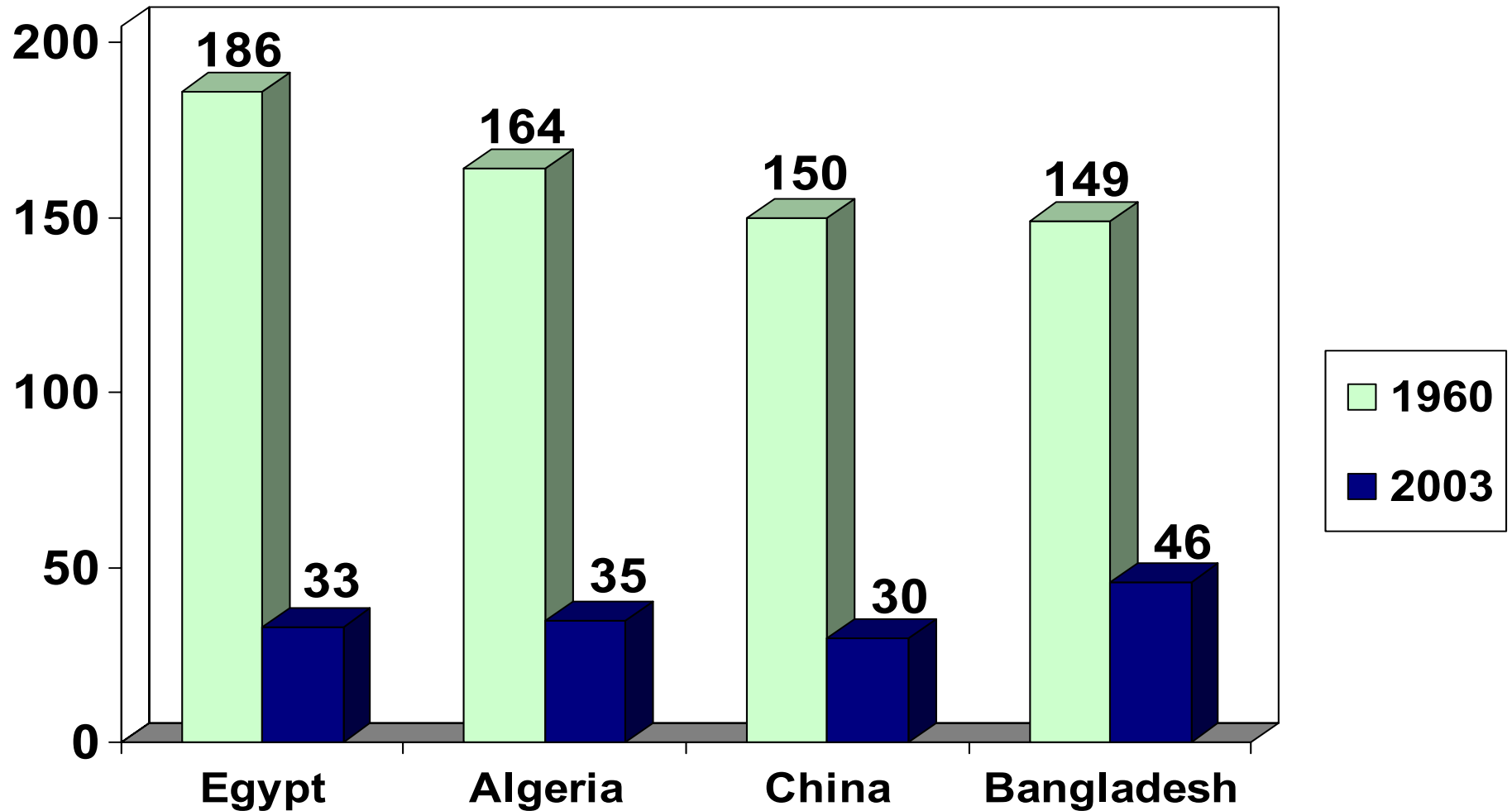
# The Growth of World Trade and GDP: 1951-2005

(Annual percent change)



Source: WTO (World Merchandise Export Growth 1951-2005), Maddison (GDP growth 1951-1970), IMF WEO (GDP growth 1971-2005)

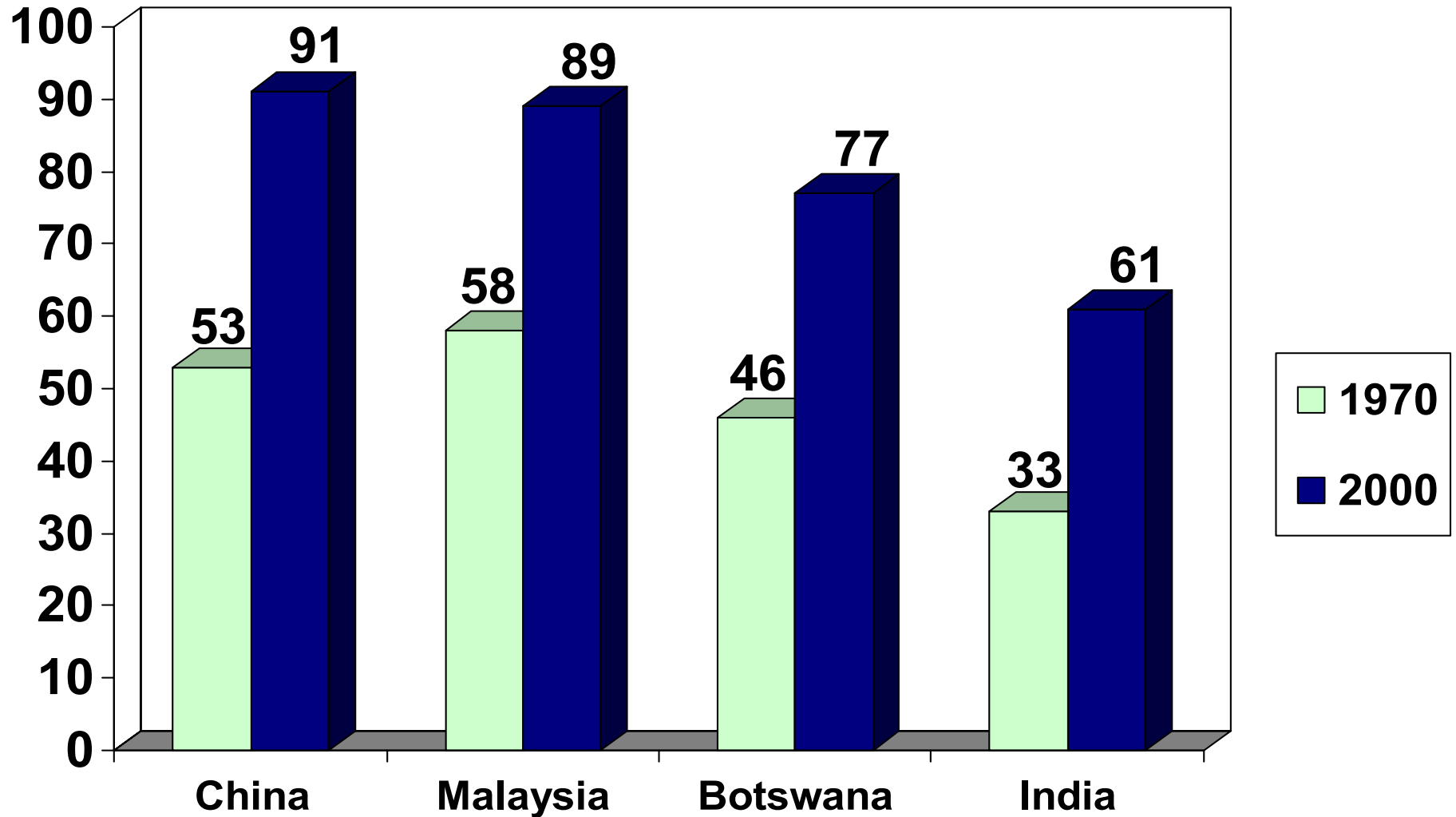
## Infant Mortality (deaths per 1,000 live births)



Source: World Bank World Development Indicators

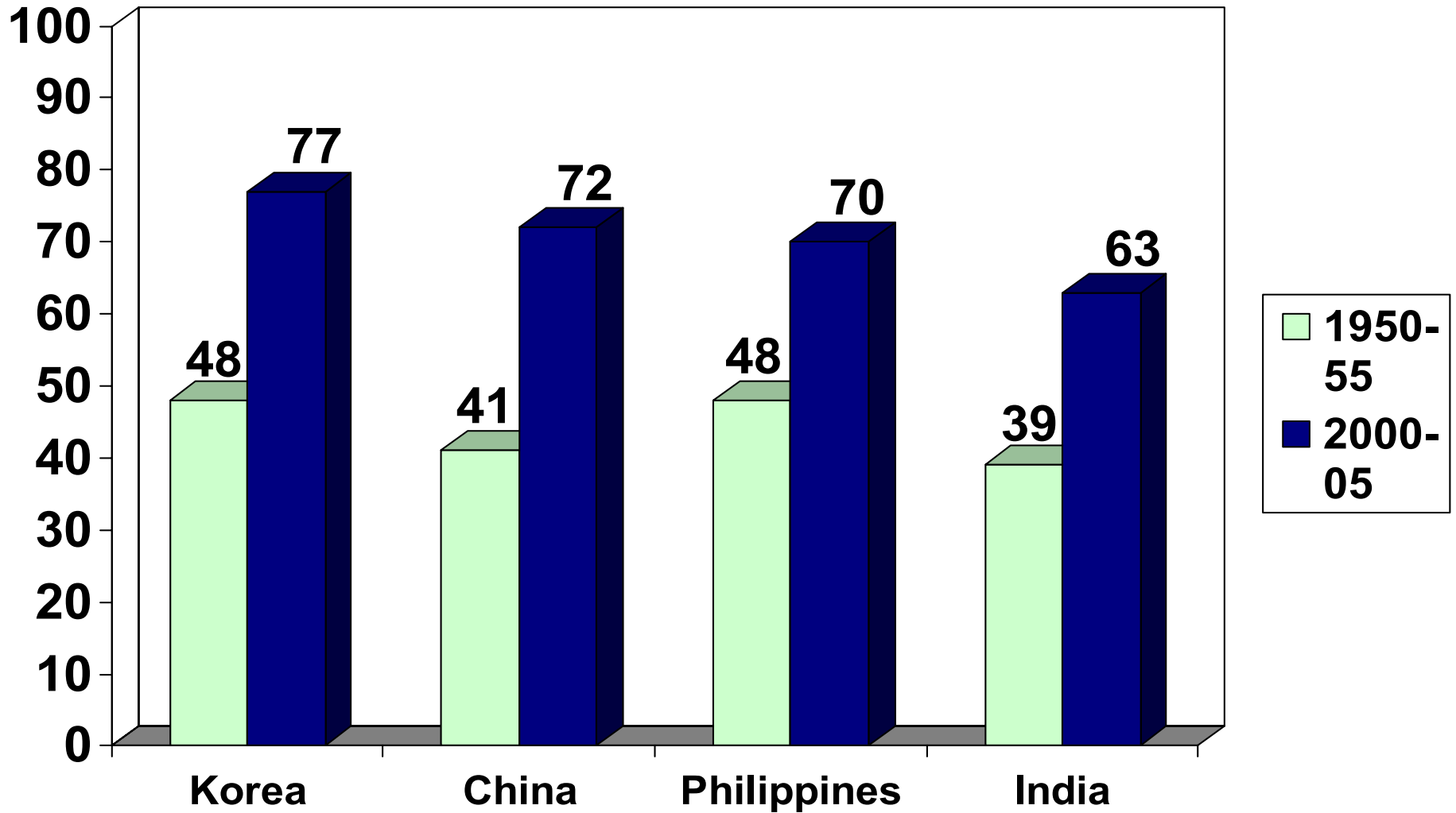
# Literacy Rates

(percent of people aged 15 and over who are literate)



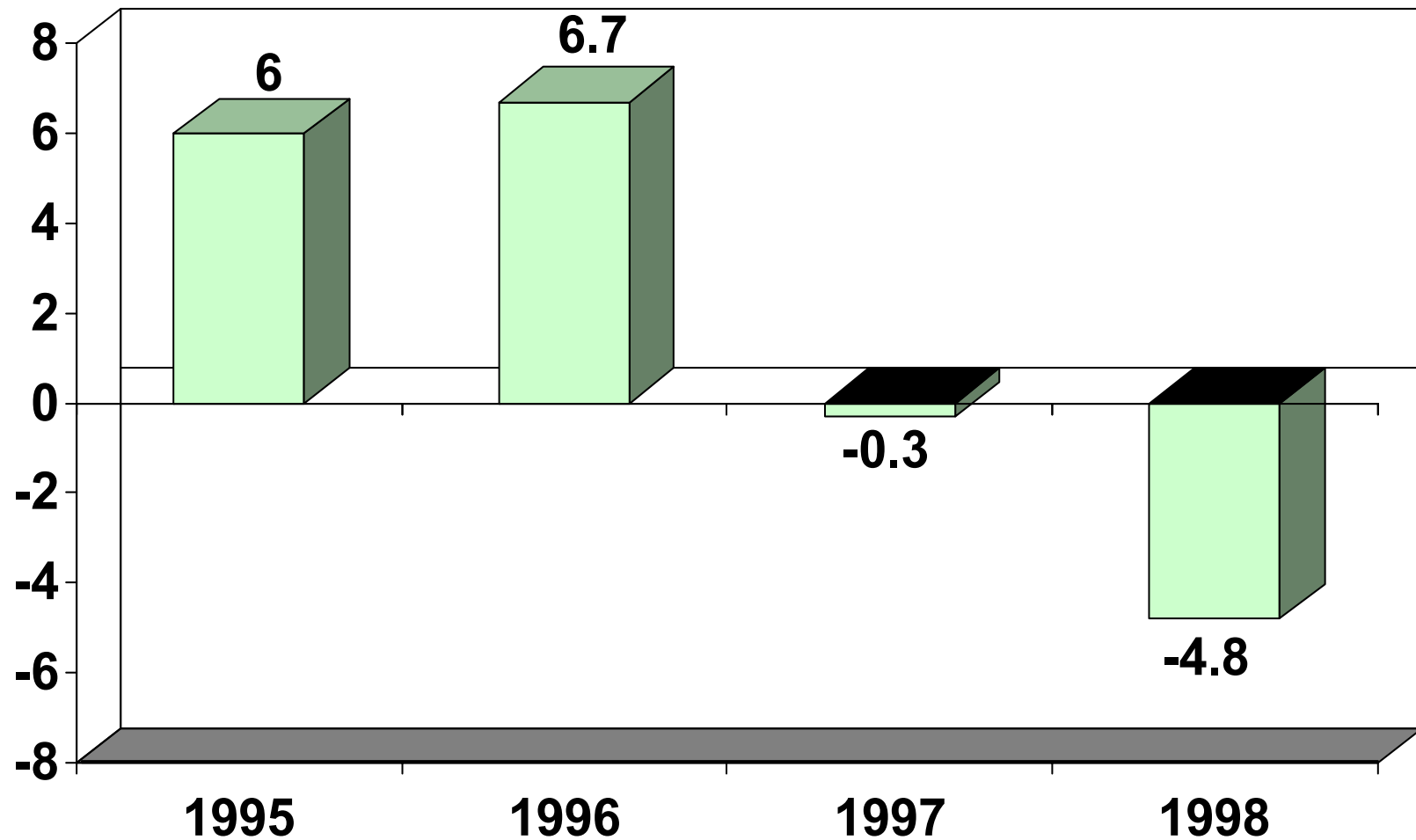
Source: World Bank World Development Indicators, Unesco Statistics Of Educational Attainment and Literacy

# Life Expectancy at Birth (years)



Source: UN World Population Prospects

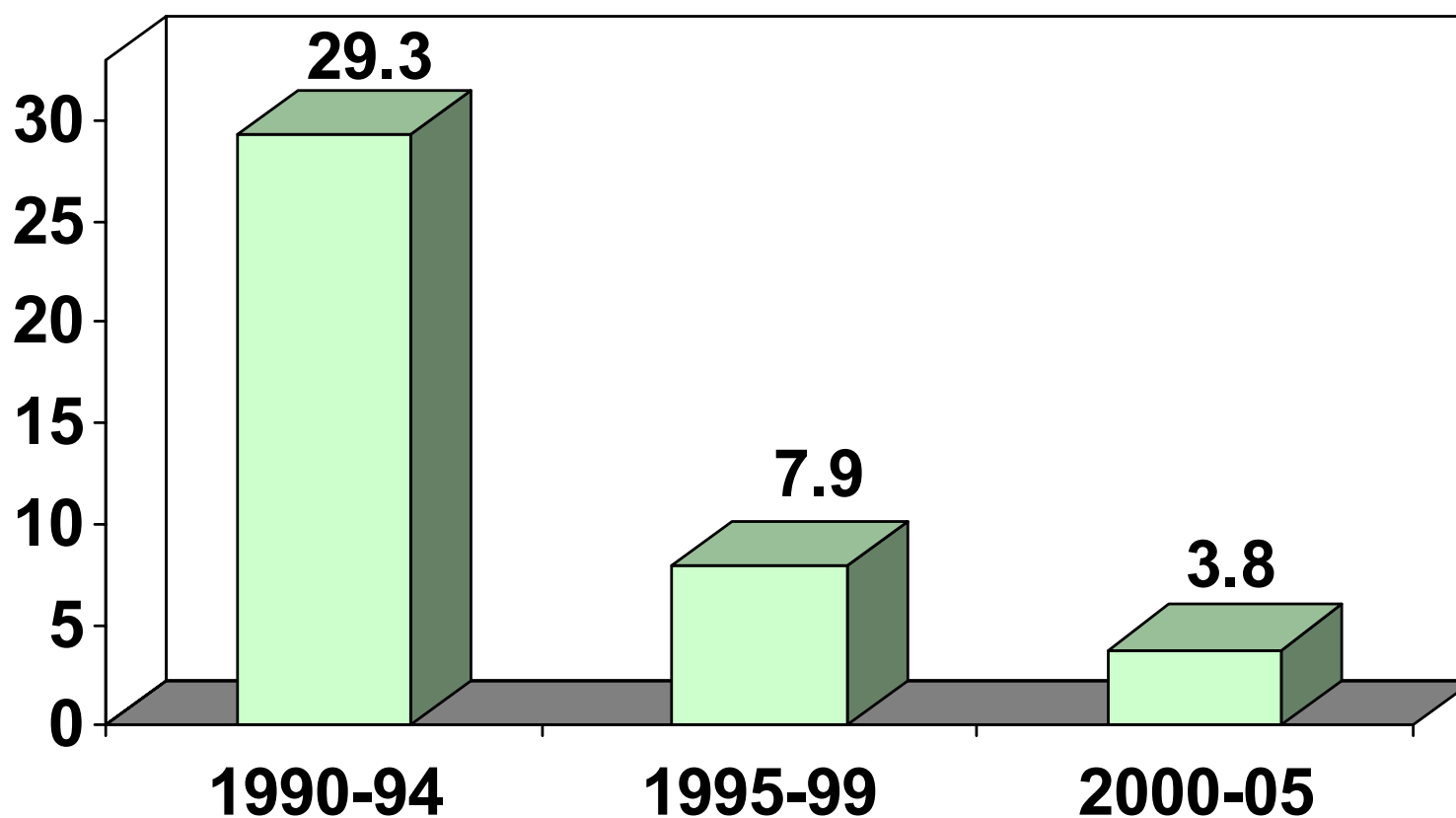
# Private Capital Flows to Asian Crisis Countries as a percentage of GDP: 1995 - 1998



Source: IMF World Economic Outlook

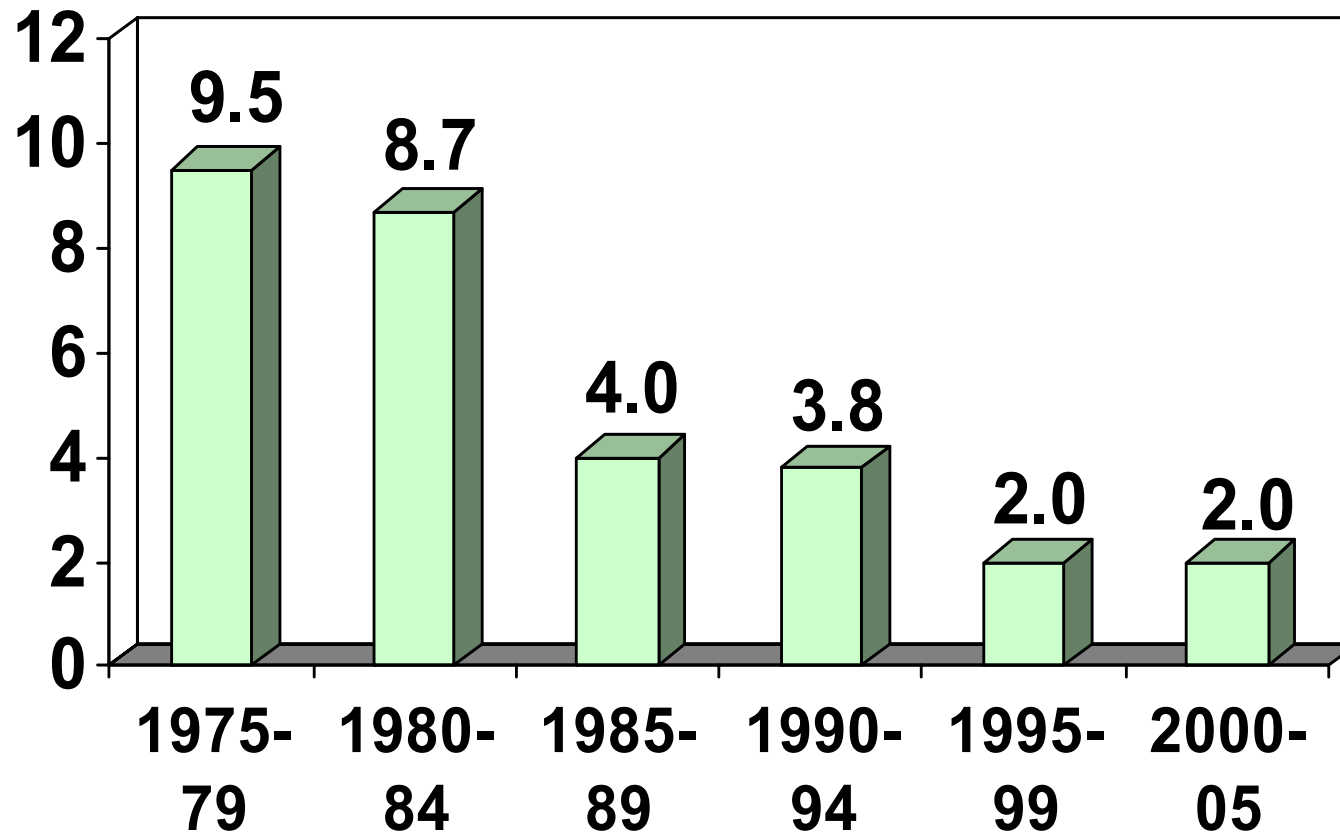
# Global Disinflation

(annual average change in CPI)



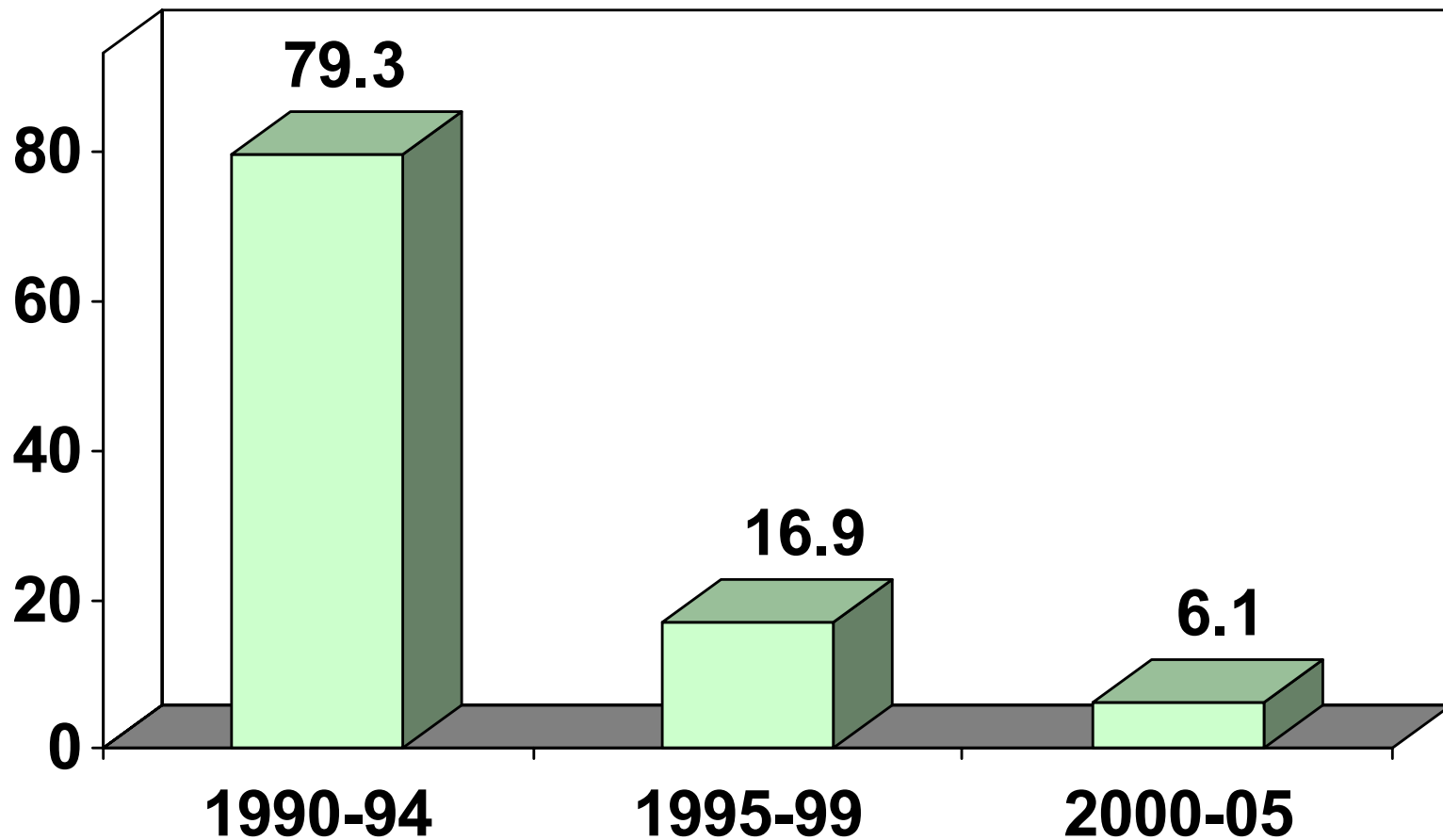
Source: IMF World Economic Outlook

# Industrial Country Disinflation (annual average change in CPI)



Source: IMF World Economic Outlook

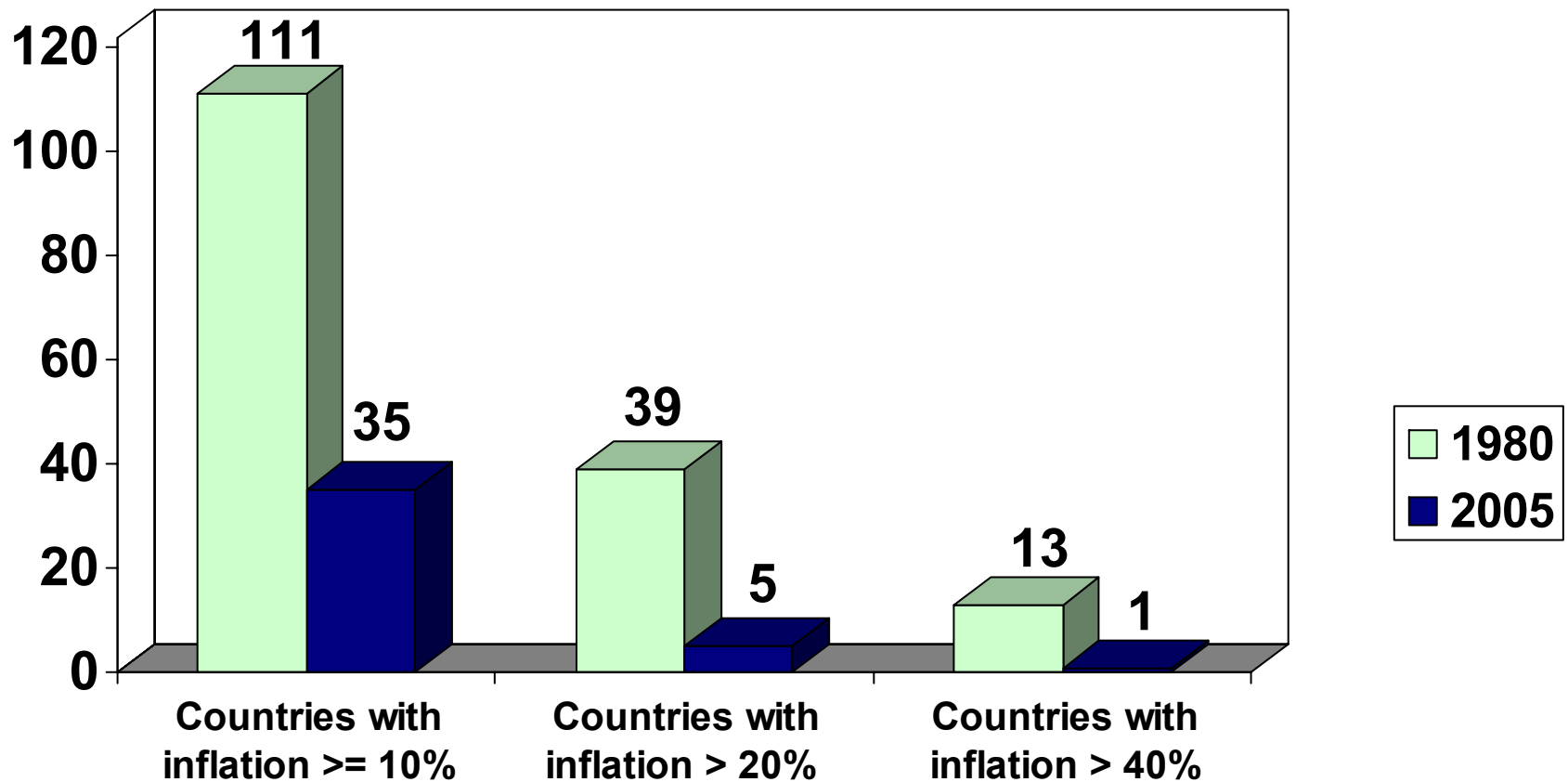
# Developing Country Disinflation (annual average change in CPI)



Source: IMF World Economic Outlook



# Numbers of High Inflation Countries: 1980 and 2005



**Source: IMF World Economic Outlook**

Note: 175 countries reported CPI data in 1980 and 180 countries reported CPI data in 2005