



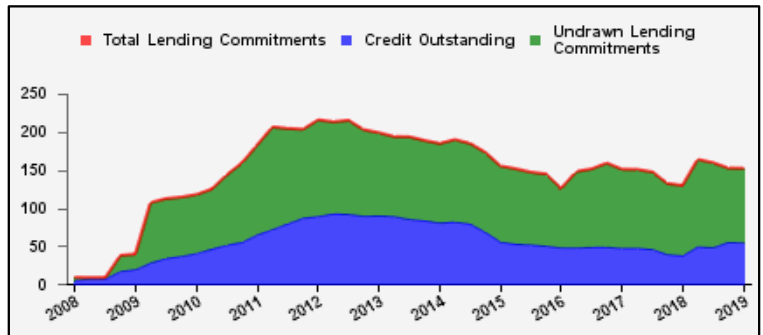
Weekly Report on Key Financial Statistics

Table 1. Key Indicators 1/

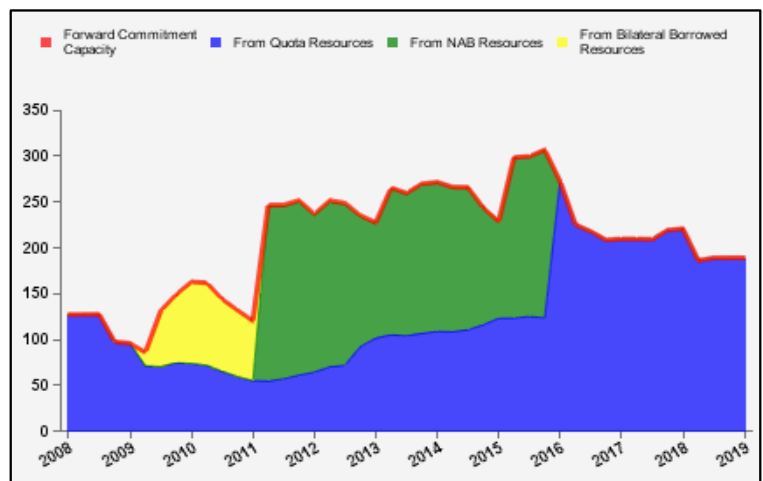
as of January 24, 2019

(In billions of SDRs, unless indicated otherwise)

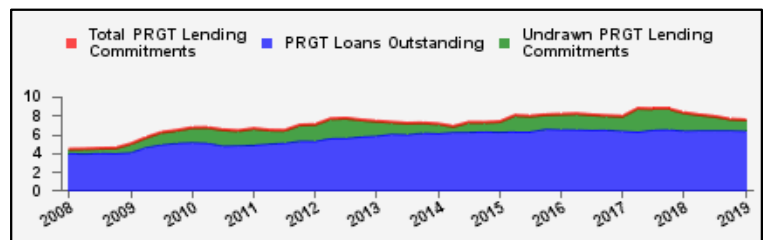
GRA Lending and Resources	SDR	USD
I. Total Lending Commitments, of which:	152.1	211.7
Undrawn Lending Commitments	97.0	135.0
Credit Outstanding	55.1	76.7
II. Forward Commitment Capacity (FCC)	189.3	263.3
III. Unactivated Borrowed Resources, of which: 2/	379.5	527.9
NAB	128.6	178.9
Bilateral Borrowing Agreements	250.9	349.1
IV. Total GRA Resources (I. + II. + III.)	720.9	1,002.9



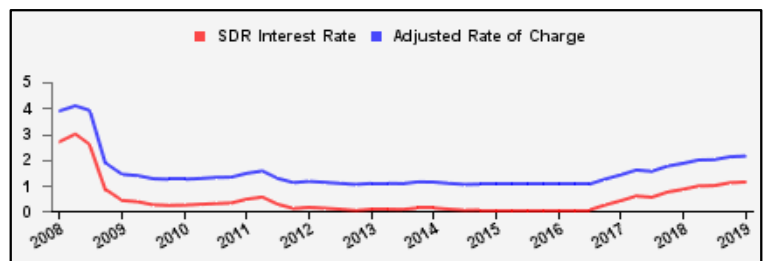
Forward Commitment Capacity (FCC)	SDR	USD
I. Usable resources (a) + (b)	365.0	507.8
(a) Fund quota resources	365.0	507.8
(b) Fund borrowed resources	--	--
II. Undrawn balances under GRA lending commitments	97.0	135.0
Precautionary 3/	64.7	90.0
Non-precautionary	32.4	45.0
III. Uncommitted usable resources (I - II)	267.9	372.8
IV. Repurchases one-year forward	4.7	6.5
V. Repayments of borrowed resources one-year forward	3.4	4.7
VI. Prudential balance	80.0	111.3
VII. Forward commitment capacity (III + IV - V - VI) 4/	189.3	263.3
(a) From Quota resources	189.3	263.3
(b) From NAB resources	--	--
(c) From Bilateral Borrowed resources	--	--



PRGT Lending and Resources	SDR	USD
I. Total Lending Commitments, of which:	7.5	10.5
Ia. Undrawn lending commitments	1.2	1.6
Ib. Loans Outstanding	6.4	8.9
II. Undrawn Loan Resources	15.2	21.1
III. Uncommitted Loan Resources (II. - Ia.)	14.0	19.5



Rates	Percent
1 SDR = USD	1.39121
SDR Interest Rate	1.133
Adjusted Rate of Charge	2.138
Adjusted Rate of Remuneration	1.129



1/ -- Indicates zero value, zero indicates amounts less than SDR 0.05 billion. Totals may not add due to rounding.

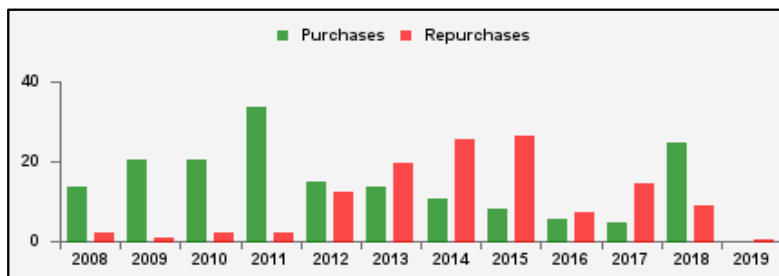
2/ Excludes 20% prudential balance and borrowing lines of participants/members that are currently not in the FTP; for the NAB, also excludes borrowing lines of participants that have not yet adhered to the NAB as well as any outstanding NAB claims and undrawn committed resources under current NAB-eligible arrangements.

3/ Undrawn balances under arrangements treated as precautionary by the authorities.

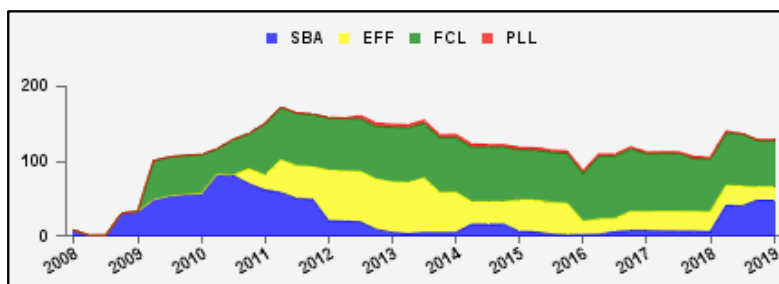
4/ Does not include the Bilateral Borrowing Agreements (activated only if the modified FCC is below SDR 100 billion).

Table 2a. Use of GRA Resources 1/
as of January 24, 2019
(In billions of SDRs, unless indicated otherwise)

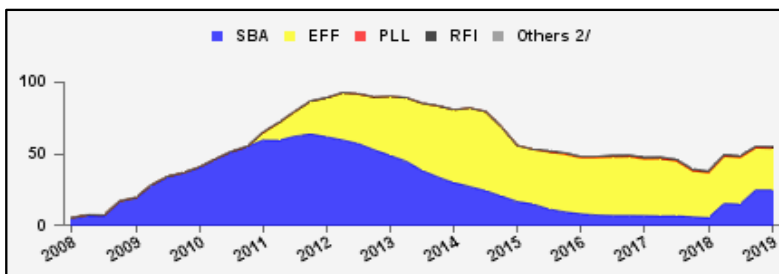
GRA Lending (Calendar year to date)	SDR	USD
Purchases	--	--
Financed by Quota Resources	--	--
Financed by Borrowings	--	--
Repurchases	0.3	0.4
Commitments Approved	--	--



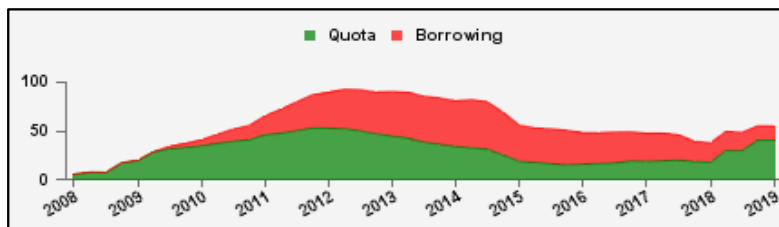
Commitments Under Current GRA Arrangements	Number of	SDR	USD
Standby Arrangement (SBA)	4	48.5	67.5
Extended Fund Facility (EFF)	12	17.1	23.7
Flexible Credit Line (FCL)	2	61.3	85.3
Precautionary and Liquidity Line (PLL)	1	2.2	3.0
Total Current Arrangements	19	129.1	179.6



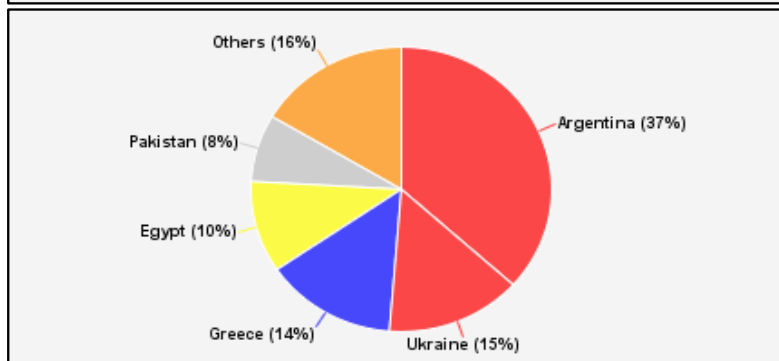
Credit Outstanding by Facility	SDR	USD
Standby Arrangement (SBA)	24.8	34.5
Extended Fund Facility (EFF)	29.2	40.7
Flexible Credit Line (FCL)	--	--
Precautionary and Liquidity Line (PLL)	--	--
Rapid Financing Instrument (RFI)	1.0	1.5
Others 2/	0.0	0.0
Total Credit Outstanding	55.1	76.7



Credit Outstanding by Financing Sources	SDR	USD
Financed by Quota Resources	40.7	56.6
Financed by Borrowings	14.4	20.0
Total Credit Outstanding	55.1	76.7



Largest 5 Exposures 3/	Credit Outstanding	
	SDR	As a % of quota
Argentina	20.2	634
Ukraine	8.0	399
Greece	7.8	322
Egypt	5.7	281
Pakistan	4.2	207



1/ -- Indicates zero value, zero indicates amounts less than SDR 0.05 billion. Totals may not add due to rounding.

2/ Includes outstanding credit under the former Compensatory Financing Facility; for the chart also includes outstanding credit under the former Emergency Post Conflict and Natural Disaster Assistance policy.

3/ Members with current arrangements are bolded.

Table 2b. Current Financial Arrangements (GRA)

as of January 24, 2019
(In millions of SDRs, unless indicated otherwise) 1/

Member	Amount Committed	Amount Undrawn	Amount Drawn	Credit Outstanding		Period of Arrangement	
				Amount 2/	As a % of Quota	Effective Date	Expiration Date
Standby Arrangement (4)	48,540	25,832	22,708	31,034			
Argentina	40,714	20,500	20,214	20,214	634	20-Jun-18	19-Jun-21
Iraq	3,831	2,337	1,494	2,274	137	07-Jul-16	06-Jul-19
Jamaica 3/	1,195	1,195	--	510	133	11-Nov-16	10-Nov-19
Ukraine	2,800	1,800	1,000	8,036	399	18-Dec-18	17-Feb-20
Extended Fund Facility (12)	17,061	7,728	9,333	10,281			
Angola	2,673	1,958	715	715	97	07-Dec-18	06-Dec-21
Barbados	208	173	35	35	37	01-Oct-18	30-Sep-22
Bosnia-Herzegovina	443	316	127	174	66	07-Sep-16	06-Sep-20
Cote d'Ivoire	434	129	305	305	47	12-Dec-16	11-Dec-19
Egypt	8,597	2,866	5,731	5,731	281	11-Nov-16	10-Nov-19
Gabon	464	179	286	286	132	19-Jun-17	18-Jun-20
Georgia	210	90	120	155	74	12-Apr-17	11-Apr-20
Jordan	515	412	103	543	158	24-Aug-16	23-Aug-19
Moldova	86	32	54	124	72	07-Nov-16	06-Nov-19
Mongolia	315	157	157	157	217	24-May-17	23-May-20
Sri Lanka	1,071	356	715	715	124	03-Jun-16	02-Jun-19
Tunisia	2,046	1,061	985	1,340	246	20-May-16	19-May-20
Flexible Credit Line (2)	61,324	61,324	--	--			
Colombia 3/	7,848	7,848	--	--	--	25-May-18	24-May-20
Mexico 3/	53,476	53,476	--	--	--	29-Nov-17	28-Nov-19
Precautionary and Liquidity Line (1)	2,151	2,151	--	--			
Morocco 3/	2,151	2,151	--	--	--	17-Dec-18	16-Dec-20
Total Current GRA Arrangements (19)	129,076	97,035	32,041	41,315			
Memorandum Items:							
Credit outstanding from members without current arrangement and outright disbursements.				13,787			
Total Credit Outstanding.				55,101			

1/ -- Indicates zero value, zero indicates amounts less than SDR 0.5 million. Totals may not add due to rounding.

2/ Includes Credit Outstanding under expired arrangements and outright disbursements.

3/ The undrawn commitment of the arrangement is treated as precautionary by the authorities.

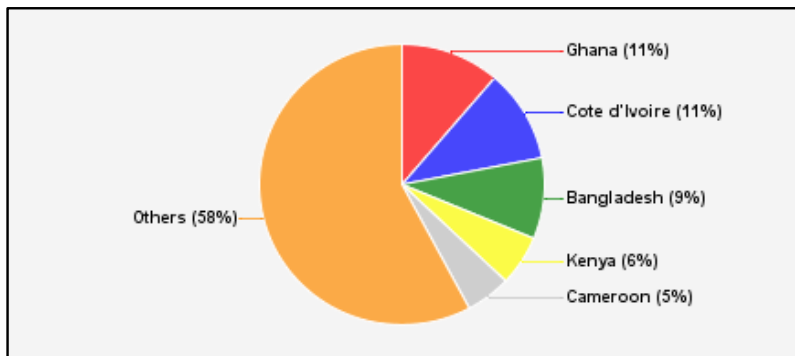
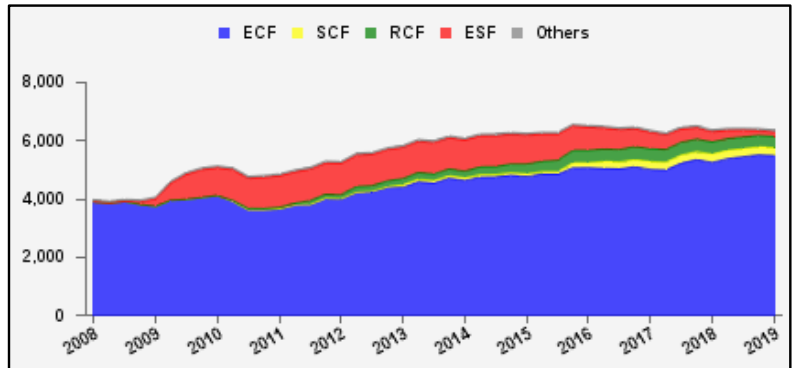
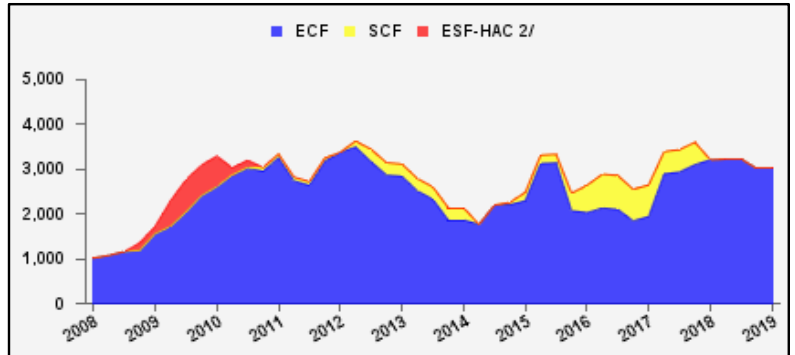
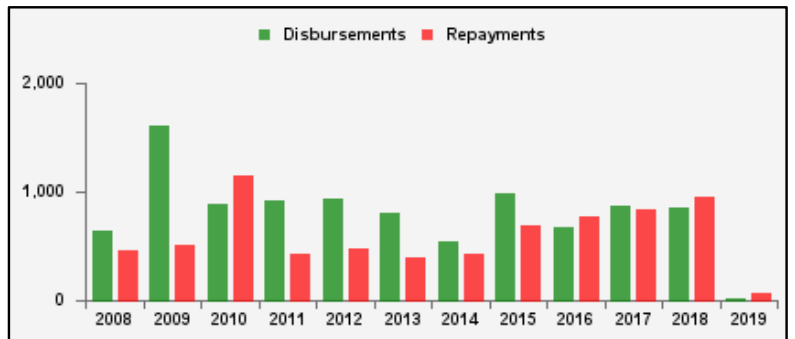
Table 3a. Use of Concessional PRGT Resources 1/
as of January 24, 2019
(In millions of SDRs, unless indicated otherwise)

PRGT Lending (Calendar year to date)	SDR	USD
Disbursements	18.1	25.1
Repayments	70.5	98.1
Commitments Approved	--	--

Commitments Under Current PRGT Arrangements	Number of	SDR	USD
Extended Credit Facility (ECF)	17	3,024.1	4,207.1
Standby Credit Facility (SCF)	--	--	--
Total Current Arrangements	17	3,024.1	4,207.1

Loans Outstanding by Facility	SDR	USD
Extended Credit Facility (ECF)	5,496.0	7,646.0
Standby Credit Facility (SCF)	271.9	378.2
Rapid Credit Facility (RCF)	378.8	527.0
(former) Exogenous Shocks Facility (ESF)	152.6	212.3
Others 3/	74.5	103.7
Total Loans Outstanding	6,373.7	8,867.2

Largest 5 Exposures 4/	Loans Outstanding	
	SDR	As a % of quota
Ghana	718.3	97
Cote d'Ivoire	680.7	105
Bangladesh	594.2	56
Kenya	367.7	68
Cameroon	326.7	118



1/ -- Indicates zero value, zero indicates amounts less than SDR 0.05 million. Totals may not add due to rounding.

2/ The last commitment under the old ESF-HAC Facility expired on December 3, 2011.

3/ Includes outstanding and overdue loans under the (former) Structural Adjustment Facility and Trust Fund.

4/ Members with current arrangements are bolded.

Table 3b. Current Financial Arrangements (PRGT)
as of January 24, 2019
(In millions of SDRs, unless indicated otherwise) 1/

Member	Amount Committed	Amount Undrawn	Amount Drawn	Loans Outstanding		Period of Arrangement	
				Amount 2/	As a % of Quota	Effective Date	Expiration Date
Extended Credit Facility (17)	3,024	1,153	1,871	3,787			
Afghanistan	32	10	23	40	12	20-Jul-16	31-Dec-19
Benin	111	48	64	117	94	07-Apr-17	06-Apr-20
Burkina Faso	108	72	36	154	128	14-Mar-18	13-Mar-21
Cameroon	483	166	317	327	118	26-Jun-17	25-Jun-20
Central African Rep.	134	23	111	145	130	20-Jul-16	19-Jul-19
Chad	224	84	140	230	164	30-Jun-17	29-Jun-20
Cote d'Ivoire	217	65	152	681	105	12-Dec-16	11-Dec-19
Ghana	664	133	531	718	97	03-Apr-15	02-Apr-19
Guinea	120	69	52	231	108	11-Dec-17	10-Dec-20
Guinea-Bissau	23	6	17	24	85	10-Jul-15	09-Jul-19
Madagascar	251	94	156	217	89	27-Jul-16	26-Nov-19
Malawi	78	56	22	159	115	30-Apr-18	29-Apr-21
Mauritania	116	66	50	96	75	06-Dec-17	05-Dec-20
Moldova	43	16	27	108	63	07-Nov-16	06-Nov-19
Niger	118	62	56	161	122	23-Jan-17	22-Jan-20
Sierra Leone	124	109	16	259	125	30-Nov-18	29-Jun-22
Togo	176	75	101	120	81	05-May-17	04-May-20
Total Current PRGT Arrangements (17)	3,024	1,153	1,871	3,787			
Memorandum Items:							
Credit outstanding from members without current arrangement and outright loans.				2,586			
Total Credit Outstanding.				6,374			

1/ -- Indicates zero value, zero indicates amounts less than SDR 0.5 million. Totals may not add due to rounding.

2/ Includes Loans Outstanding under expired arrangements and outright loans.