



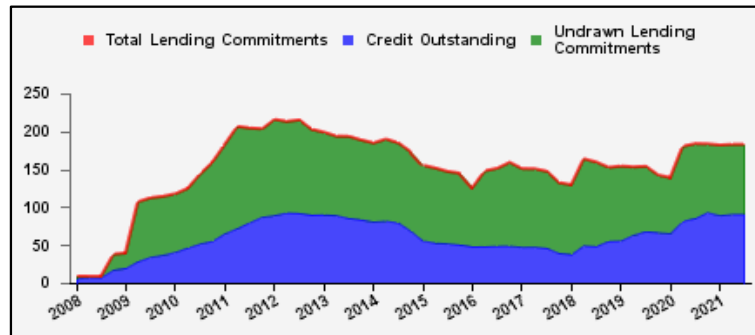
# Weekly Report on Key Financial Statistics

## Table 1. Key Indicators 1/

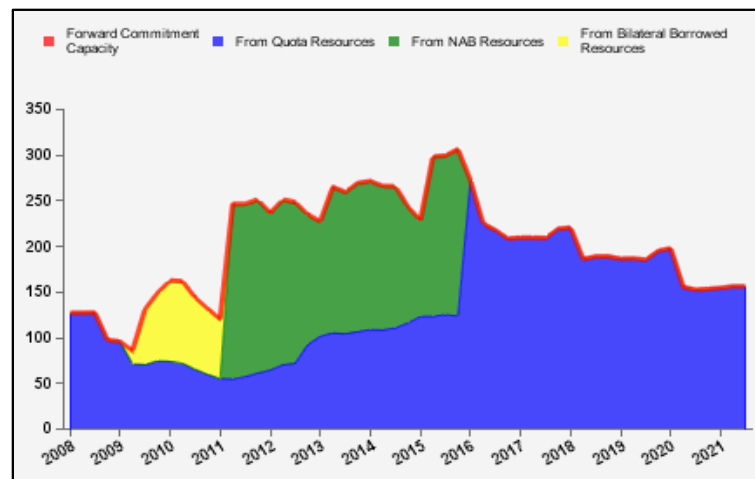
as of July 02, 2021

(In billions of SDRs, unless indicated otherwise)

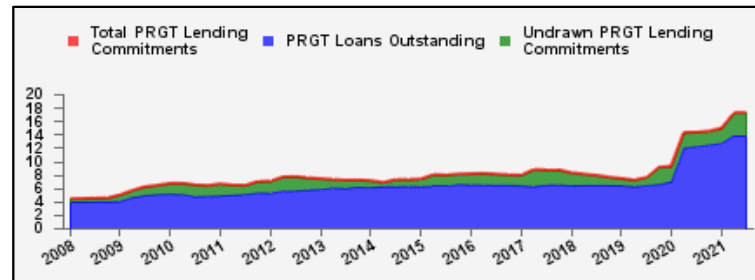
GRA Lending and Resources	SDR	USD
I. Total Lending Commitments, of which:	182.9	260.4
Undrawn Lending Commitments	91.8	130.7
Credit Outstanding	91.1	129.8
II. Forward Commitment Capacity (FCC)	156.4	222.7
III. Unactivated Borrowed Resources, of which: 2/	386.9	551.0
NAB	280.4	399.3
Bilateral Borrowing Agreements	106.5	151.7
IV. Total GRA Resources (I. + II. + III.)	726.3	1,034.2



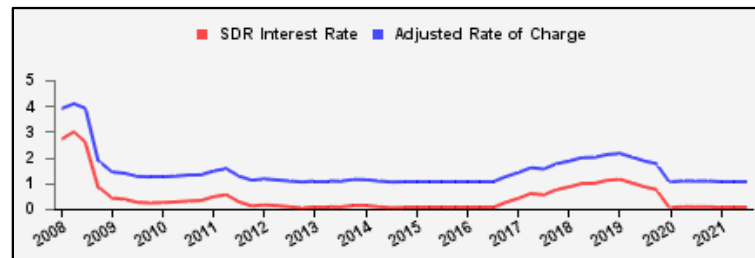
Forward Commitment Capacity (FCC)	SDR	USD
I. Usable resources (a) + (b)	317.4	451.9
(a) Fund quota resources	317.4	451.9
(b) Fund borrowed resources	--	--
II. Undrawn balances under GRA lending commitments	91.8	130.7
Precautionary 3/	80.4	114.5
Non-precautionary	11.4	16.2
III. Uncommitted usable resources ( I - II )	225.6	321.3
IV. Repurchases one-year forward	11.2	15.9
V. Repayments of borrowed resources one-year forward	1.4	2.0
VI. Prudential balance	79.0	112.5
VII. Forward commitment capacity ( III + IV - V - VI ) 4/	156.4	222.7
(a) From Quota resources	156.4	222.7
(b) From NAB resources	--	--
(c) From Bilateral Borrowed resources	--	--



PRGT Lending and Resources	SDR	USD
I. Total Lending Commitments, of which:	17.2	24.5
Ia. Undrawn lending commitments	3.3	4.7
Ib. Loans Outstanding	13.9	19.8
II. Undrawn Loan Resources	20.4	29.1
III. Uncommitted Loan Resources (II. - Ia.)	17.1	24.4



Rates 5/	Percent
1 SDR = USD	1.42393
SDR Interest Rate	0.050
Adjusted Rate of Charge	1.050
Adjusted Rate of Remuneration	0.050



1/ -- Indicates zero value, zero indicates amounts less than SDR 0.05 billion. Totals may not add due to rounding.

2/ Excludes 20% prudential balance and borrowing lines of participants/members that are currently not in the FTP; for the NAB, also excludes borrowing lines of participants that have not yet adhered to the NAB as well as any outstanding NAB claims and undrawn committed resources under current NAB-eligible arrangements.

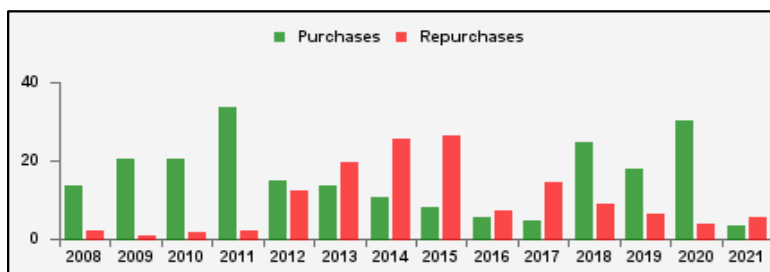
3/ Undrawn balances under arrangements treated as precautionary by the authorities.

4/ Does not include the Bilateral Borrowing Agreements (activated only if the modified FCC is below SDR 100 billion).

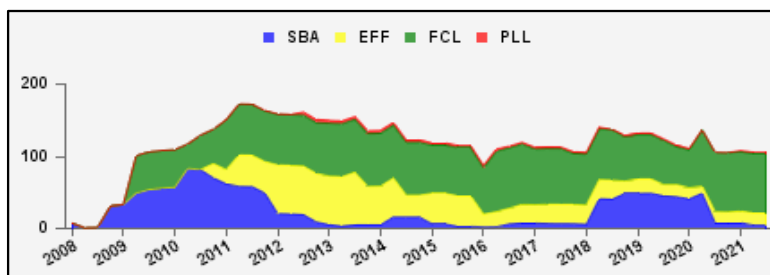
5/ Due to the Fund's closure on Friday July 2, 2021, the USD per SDR exchange rate and USD equivalent amounts are based on the exchange rates as of Thursday July 1, 2021.

**Table 2a. Use of GRA Resources 1/**  
as of July 02, 2021  
(In billions of SDRs, unless indicated otherwise)

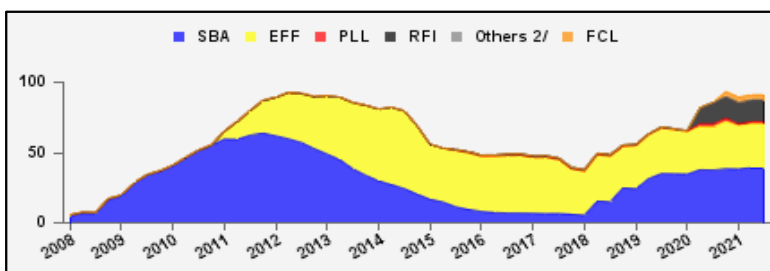
GRA Lending (Calendar year to date)	SDR	USD
Purchases	3.4	4.9
Financed by Quota Resources	3.4	4.9
Financed by Borrowings	--	--
Repurchases	5.7	8.1
Commitments Approved	5.2	7.4



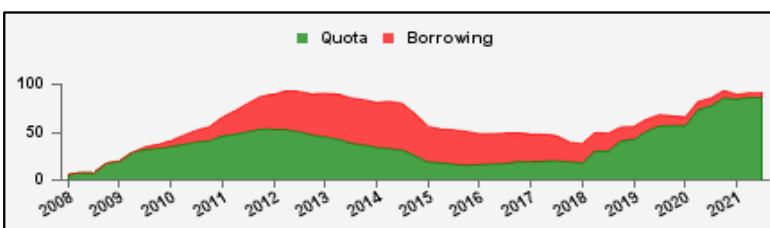
Commitments Under Current GRA Arrangements	Number of	SDR	USD
Standby Arrangement (SBA)	4	4.5	6.4
Extended Fund Facility (EFF)	9	16.9	24.1
Flexible Credit Line (FCL)	4	82.3	117.2
Precautionary and Liquidity Line (PLL)	1	1.9	2.7
Short-Term Liquidity Line (SLL)	--	--	--
Total Current Arrangements	18	105.6	150.3



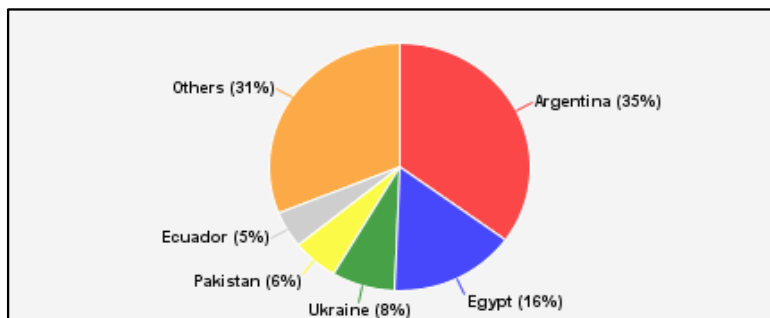
Credit Outstanding by Facility	SDR	USD
Standby Arrangement (SBA)	39.3	55.9
Extended Fund Facility (EFF)	31.1	44.3
Flexible Credit Line (FCL)	3.8	5.3
Precautionary and Liquidity Line (PLL)	1.5	2.1
Short-Term Liquidity Line (SLL)	--	--
Rapid Financing Instrument (RFI)	15.5	22.1
Others 2/	--	--
Total Credit Outstanding	91.1	129.8



Credit Outstanding by Financing Sources	SDR	USD
Financed by Quota Resources	86.2	122.7
Financed by Borrowings	4.9	7.0
Total Credit Outstanding	91.1	129.8



Largest 5 Exposures 3/	Credit Outstanding	
	SDR	As a % of quota
Argentina	31.9	1,001
Egypt	14.2	699
<b>Ukraine</b>	7.1	355
<b>Pakistan</b>	5.2	255
<b>Ecuador</b>	4.4	624



1/ -- Indicates zero value, zero indicates amounts less than SDR 0.05 billion. Totals may not add due to rounding.

2/ Includes outstanding credit under the former Compensatory Financing Facility; for the chart also includes outstanding credit under the former Emergency Post Conflict and Natural Disaster Assistance policy.

3/ Members with current arrangements are bolded.

## Table 2b. Current Financial Arrangements (GRA)

as of July 02, 2021

(In millions of SDRs, unless indicated otherwise) 1/

Member	Amount Committed	Amount Undrawn	Amount Drawn	Credit Outstanding		Period of Arrangement	
				Amount 2/	As a % of Quota	Effective Date	Expiration Date
<b>Standby Arrangement (4)</b>	<b>4,469</b>	<b>2,428</b>	<b>2,041</b>	<b>7,981</b>			
Armenia	309	77	232	314	244	17-May-19	16-May-22
Honduras	258	35	223	223	89	15-Jul-19	14-Nov-21
Senegal	302	216	86	302	93	07-Jun-21	06-Dec-22
Ukraine	3,600	2,100	1,500	7,141	355	09-Jun-20	08-Dec-21
<b>Extended Fund Facility (9)</b>	<b>16,932</b>	<b>8,923</b>	<b>8,009</b>	<b>14,486</b>			
Angola	3,213	535	2,678	2,678	362	07-Dec-18	06-Dec-21
Barbados	322	34	288	288	305	01-Oct-18	30-Sep-22
Costa Rica	1,237	1,237	--	369	100	01-Mar-21	29-Feb-24
Ecuador	4,615	1,775	2,840	4,354	624	30-Sep-20	29-Dec-22
Equatorial Guinea	205	176	29	29	19	18-Dec-19	17-Dec-22
Ethiopia	752	662	90	391	130	20-Dec-19	19-Dec-22
Jordan	1,070	721	350	860	251	25-Mar-20	24-Mar-24
Kenya	1,248	909	339	339	63	02-Apr-21	01-Jun-24
Pakistan	4,268	2,874	1,394	5,176	255	03-Jul-19	02-Oct-22
<b>Flexible Credit Line (4)</b>	<b>82,281</b>	<b>78,531</b>	<b>3,750</b>	<b>3,750</b>			
Chile 3/	17,443	17,443	--	--	--	29-May-20	28-May-22
Colombia 3/	12,267	8,517	3,750	3,750	183	01-May-20	30-Apr-22
Mexico 3/	44,564	44,564	--	--	--	22-Nov-19	21-Nov-21
Peru 3/	8,007	8,007	--	--	--	28-May-20	27-May-22
<b>Precautionary and Liquidity Line (1)</b>	<b>1,884</b>	<b>1,884</b>	<b>--</b>	<b>377</b>			
Panama 3/	1,884	1,884	--	377	100	19-Jan-21	18-Jan-23
<b>Total Current GRA Arrangements (18)</b>	<b>105,565</b>	<b>91,765</b>	<b>13,800</b>	<b>26,593</b>			
Memorandum Items:							
Credit outstanding from members without current arrangement and outright disbursements.				64,541			
Total Credit Outstanding.				91,134			

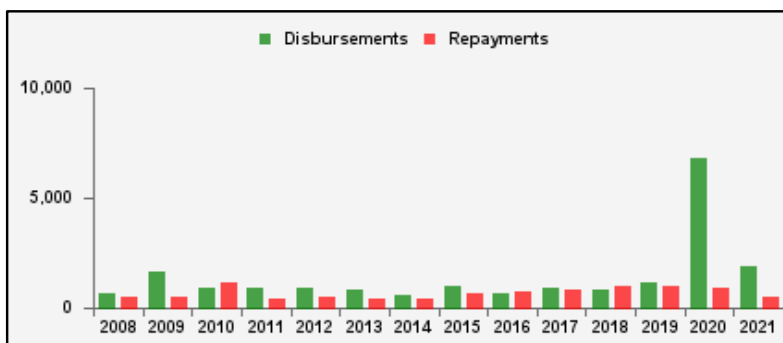
1/ -- Indicates zero value, zero indicates amounts less than SDR 0.5 million. Totals may not add due to rounding.

2/ Includes Credit Outstanding under expired arrangements and outright disbursements.

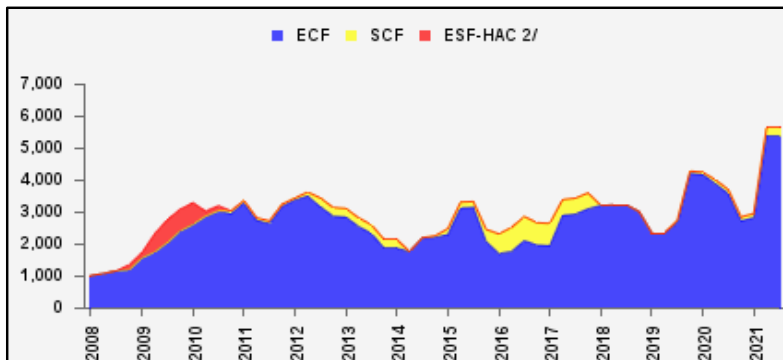
3/ The undrawn commitment of the arrangement is treated as precautionary by the authorities.

**Table 3a. Use of Concessional PRGT Resources 1/**  
as of July 02, 2021  
(In millions of SDRs, unless indicated otherwise)

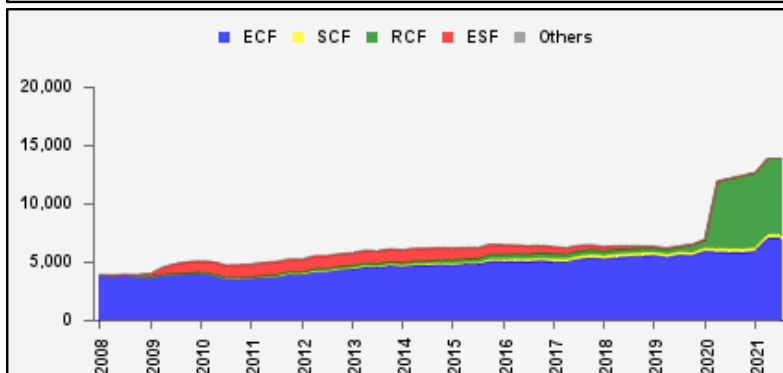
<b>PRGT Lending (Calendar year to date)</b>	SDR	USD
Disbursements	1,908.3	2,717.3
Repayments	484.6	690.0
Commitments Approved	3,526.8	5,021.9



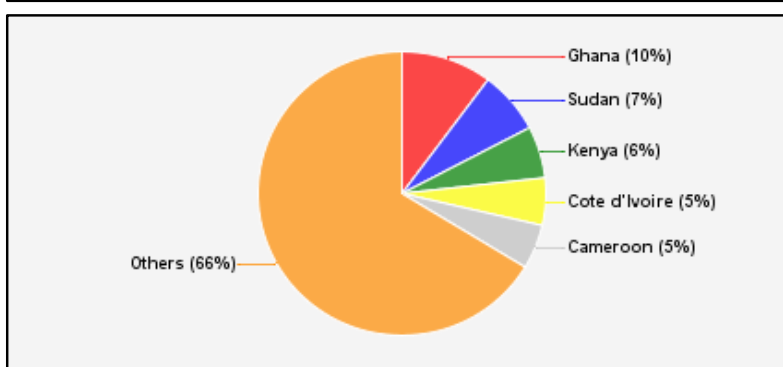
<b>Commitments Under Current PRGT Arrangements</b>	Number of	SDR	USD
Extended Credit Facility (ECF)	13	5,369.5	7,645.9
Standby Credit Facility (SCF)	2	280.1	398.8
Total Current Arrangements	15	5,649.6	8,044.6



<b>Loans Outstanding by Facility</b>	SDR	USD
Extended Credit Facility (ECF)	7,059.5	10,052.2
Standby Credit Facility (SCF)	314.6	448.0
Rapid Credit Facility (RCF)	6,531.4	9,300.3
(former) Exogenous Shocks Facility (ESF)	--	--
Others 3/	--	--
Total Loans Outstanding	13,905.5	19,800.5



<b>Loans Outstanding</b>		
<b>Largest 5 Exposures 4/</b>	SDR	As a % of quota
<b>Ghana</b>	1,419.0	192
<b>Sudan</b>	991.6	157
<b>Kenya</b>	819.9	151
Cote d'Ivoire	748.5	115
Cameroon	703.8	255



1/ -- Indicates zero value, zero indicates amounts less than SDR 0.05 million. Totals may not add due to rounding.

2/ The last commitment under the old ESF-HAC Facility expired on December 3, 2011.

3/ Includes outstanding and overdue loans under the (former) Structural Adjustment Facility and Trust Fund.

4/ Members with current arrangements are bolded.

### Table 3b. Current Financial Arrangements (PRGT)

as of July 02, 2021

(In millions of SDRs, unless indicated otherwise) 1/

Member	Amount Committed	Amount Undrawn	Amount Drawn	Loans Outstanding		Period of Arrangement	
				Amount 2/	As a % of Quota	Effective Date	Expiration Date
<b>Extended Credit Facility (13)</b>	<b>5,370</b>	<b>3,194</b>	<b>2,176</b>	<b>4,963</b>			
Afghanistan	259	74	185	382	118	06-Nov-20	05-May-24
Central African Rep.	84	48	36	214	192	20-Dec-19	19-Dec-22
Ethiopia	1,203	1,069	134	134	44	20-Dec-19	19-Dec-22
Gambia	55	20	35	70	113	23-Mar-20	22-Jun-23
Kenya	407	244	163	820	151	02-Apr-21	01-Jun-24
Liberia	155	104	51	193	75	11-Dec-19	10-Dec-23
Madagascar	220	171	49	590	241	29-Mar-21	28-Jul-24
Mali	140	60	80	415	223	28-Aug-19	27-Aug-22
Sao Tome-Principe	15	8	7	20	137	02-Oct-19	01-Feb-23
Sierra Leone	124	78	47	373	180	30-Nov-18	29-Jun-22
Somalia	253	35	218	218	133	25-Mar-20	24-Mar-23
Sudan	1,733	742	992	992	157	29-Jun-21	28-Sep-24
Uganda	722	542	181	542	150	28-Jun-21	27-Jun-24
<b>Standby Credit Facility (2)</b>	<b>280</b>	<b>123</b>	<b>157</b>	<b>265</b>			
Honduras	129	15	114	114	46	15-Jul-19	14-Nov-21
Senegal	151	108	43	151	47	07-Jun-21	06-Dec-22
<b>Total Current PRGT Arrangements (15)</b>	<b>5,650</b>	<b>3,317</b>	<b>2,333</b>	<b>5,228</b>			
Memorandum Items:							
Credit outstanding from members without current arrangement and outright loans.				8,678			
Total Credit Outstanding.				13,906			

1/ -- Indicates zero value, zero indicates amounts less than SDR 0.5 million. Totals may not add due to rounding.

2/ Includes Loans Outstanding under expired arrangements and outright loans.