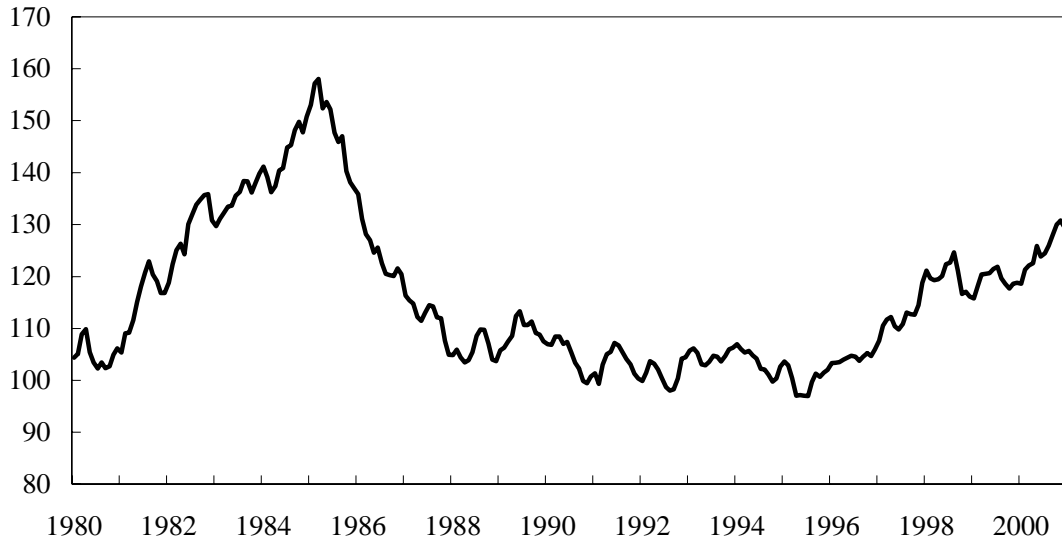
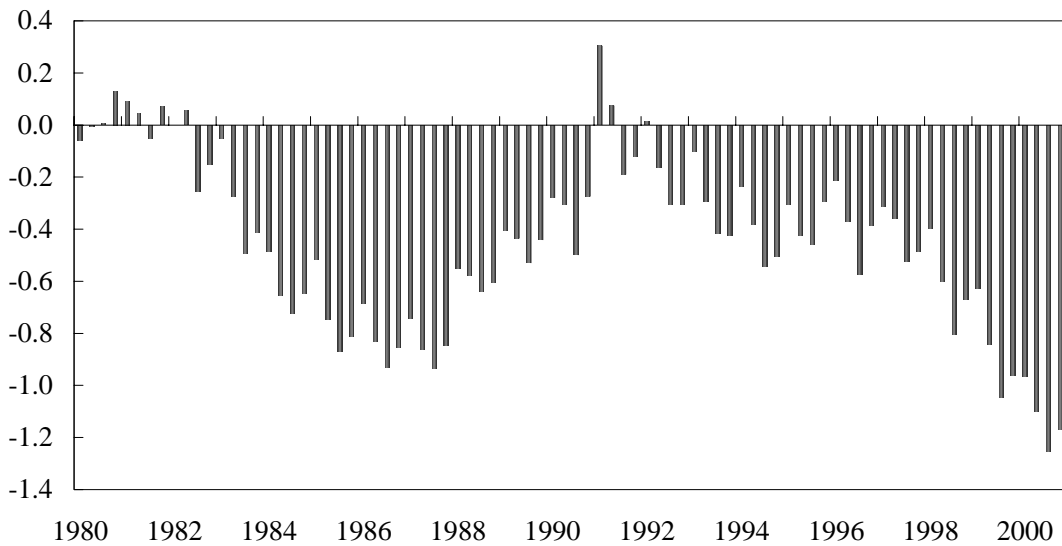


Figure 7e. *United States*

Real Effective Exchange Rate
(Index; 1990=100)



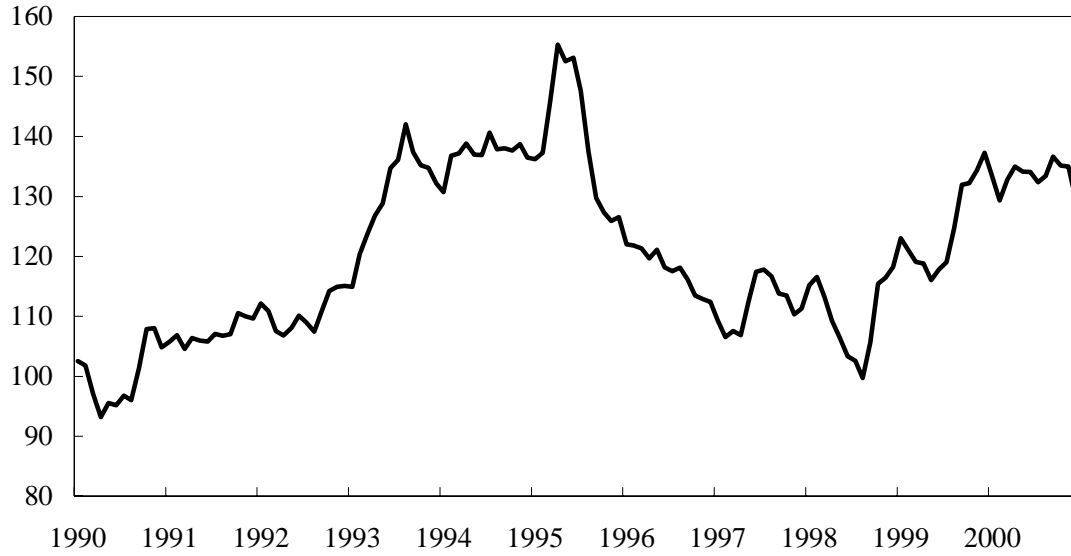
Current Account Balance
(Percent of GDP)



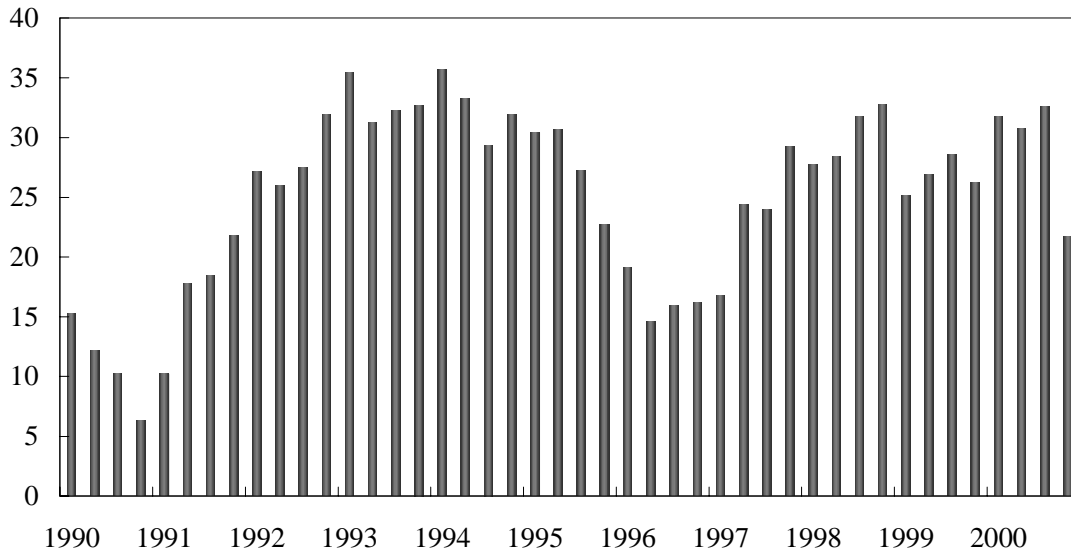
Sources: IMF, *International Financial Statistics*, and Information Notice System Database.

Figure 7f. Japan

Real Effective Exchange Rate
(Index; 1990=100)

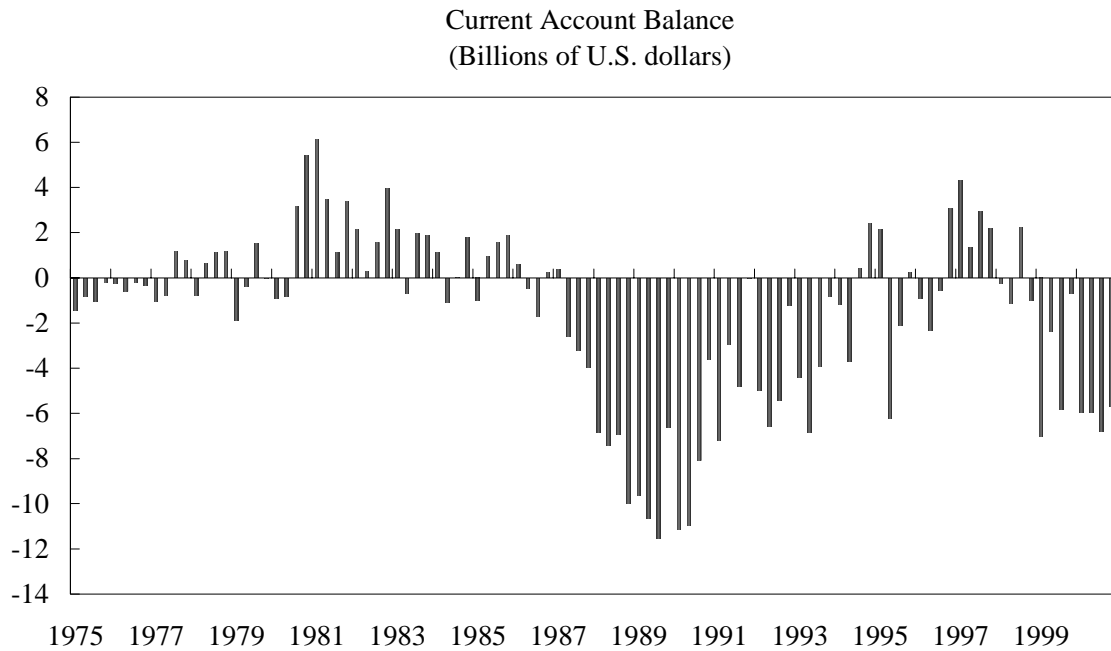
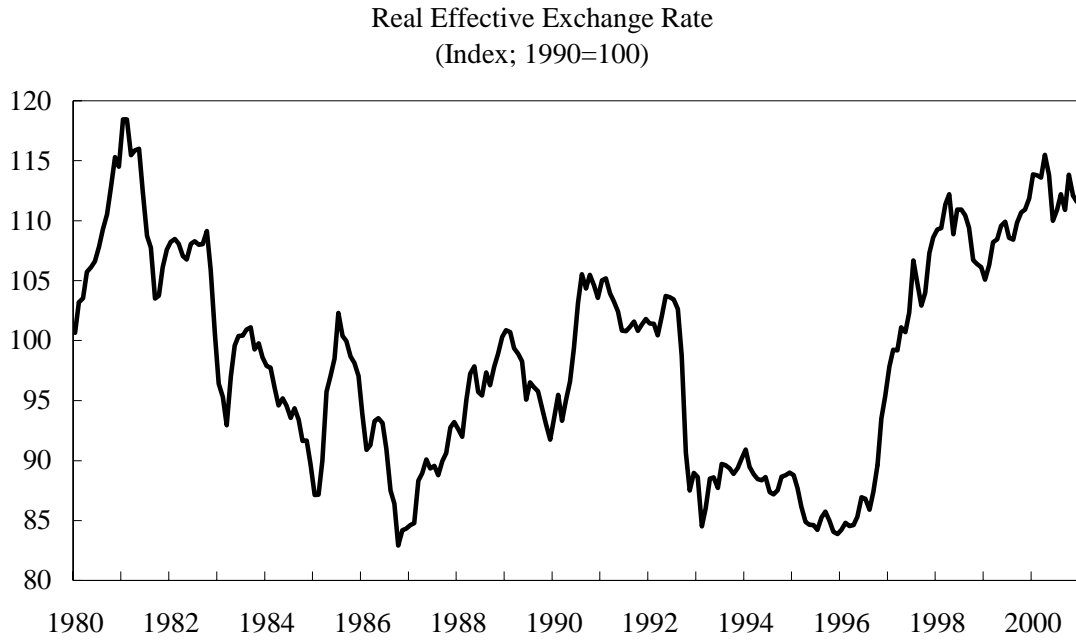


Current Account Balance
(Billions of U.S. dollars)



Sources: IMF, *International Financial Statistics*, and Information Notice System Database.

Figure 7g. *United Kingdom*



Sources: IMF, *International Financial Statistics*, and Information Notice System Database.