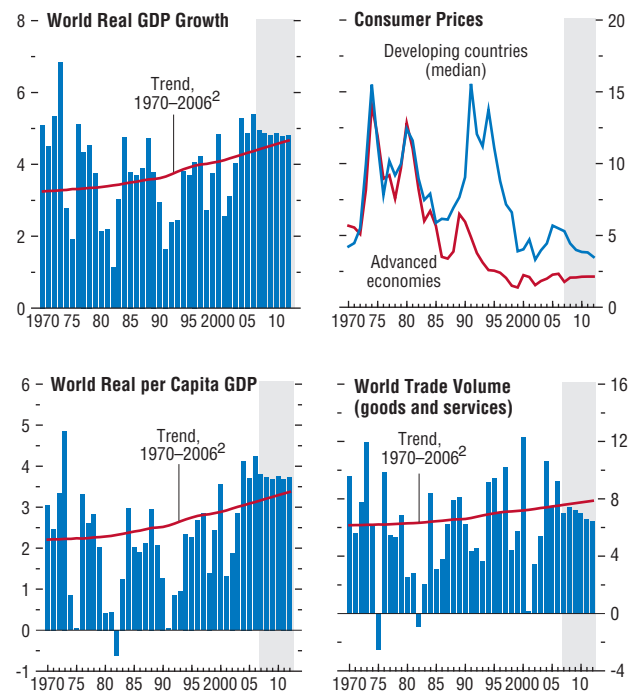


Figure 1.1. Global Indicators¹

(Annual percent change unless otherwise noted)

The global expansion remains above trend, although the pace is moderating, helping to contain inflationary pressures. World trade continues to grow significantly faster than output.



¹Shaded areas indicate IMF staff projections. Aggregates are computed on the basis of purchasing-power-parity (PPP) weights unless otherwise noted.

²Average growth rates for individual countries, aggregated using PPP weights; the aggregates shift over time in favor of faster-growing countries, giving the line an upward trend.