

**WP/15/260**

# **IMF Working Paper**

---

Interest Rate Pass-Through in the Dominican Republic

by Francesco Grigoli and José M. Mota

I N T E R N A T I O N A L M O N E T A R Y F U N D

## IMF Working Paper

Western Hemisphere Department

### Interest Rate Pass-Through in the Dominican Republic<sup>1</sup>

Prepared by Francesco Grigoli and José M. Mota<sup>2</sup>

Authorized for distribution by Valerie Cerra

December 2015

**IMF Working Papers describe research in progress by the author(s) and are published to elicit comments and to encourage debate.** The views expressed in IMF Working Papers are those of the author(s) and do not necessarily represent the views of the IMF, its Executive Board, or IMF management.

#### Abstract

A well-functioning monetary transmission mechanism is critical for monetary policy. As the Dominican Republic recently adopted an inflation targeting regime, it is even more relevant to guarantee that changes in the monetary policy rates are quickly and fully reflected in retail rates, to eventually influence aggregate demand and inflation. This paper estimates the interest rate pass-through of the monetary policy rate to retail rates and explores asymmetries in the adjustment. We find evidence of complete pass-through to retail rates, confirming the effectiveness of the monetary policy transmission mechanism. However, our results also suggest a faster pass-through to lending rates than to deposit rates and asymmetric adjustments of short-term rates, as deposit rates respond faster to policy rate cuts and lending rates respond faster to policy rate hikes. Measures to enhance competition in the financial system could help to achieve a symmetric adjustment of retail rates.

JEL Classification Numbers: E43, E52

Keywords: asymmetric, Dominican Republic, interest rate, pass-through, transmission mechanism.

Author's E-Mail Address: fgrigoli@imf.org; jmota@sb.gob.do.

---

<sup>1</sup> We thank Svetlana Cerovic, Przemek Gajdeczka, Metodij Hadzi-Vaskov, Hibiki Ichiue, Raul Ovalle, Evelio Paredes, Pau Rabanal, Andrew Swiston, and Apolinar Veloz for helpful comments and suggestions. We are also grateful for the suggestions made by participants in the seminars of the Western Hemisphere Department of the IMF, the Superintendency of Banks of the Dominican Republic, and the Ministry of Finance of the Dominican Republic, all held in November 2015.

<sup>2</sup> Superintendency of Banks of the Dominican Republic.

Contents	Page
Abstract.....	2
I. Introduction .....	4
II. The Pass-Through in the Dominican Republic .....	4
A. Theoretical Contributions .....	5
B. Characteristics of the Dominican Financial System and Empirical Evidence .....	7
III. Empirical Strategy .....	11
IV. Results.....	15
A. Baseline.....	15
B. Asymmetries.....	17
C. Simulation .....	19
V. Conclusions.....	20
Tables	
1. Literature for the Dominican Republic.....	10
2. ECM Estimation for Retail Rates .....	18
3. ADL Model Estimation for Government Bonds.....	19
4. Asymmetric M-TAR ECM Estimation for Retail Rates.....	21
A1. Unit Root, ADF Test.....	24
A2. Cointegration, Engle-Granger Test.....	24
A3. Cointegration, TAR and M-TAR Tests with Threshold Set to Zero .....	25
A4. Cointegration, TAR and M-TAR Tests with Endogenously Determined Threshold .....	25
Figures	
1. Monetary Policy and Retail Rates.....	8
2. Banks' Margins.....	9
3. Timing of One-Percentage Point Change in the Monetary Policy Rate .....	22
References.....	26

## I. INTRODUCTION

The global slowdown and recent price developments renewed the interest in evaluating the effectiveness of monetary policy. It is widely acknowledged that an effective monetary policy relies on a well-functioning transmission mechanism. If changes in monetary policy rates are quickly and fully transmitted to retail rates, the latter have a faster impact on domestic demand and therefore inflation (Mishkin, 1995; Becker et al., 2012). Conversely, if retail rates are sticky, the monetary policy goals take longer and are harder to achieve. As the Dominican Republic recently adopted an inflation targeting regime, it is even more relevant to ensure that changes in the monetary policy rates are quickly and fully reflected in retail rates to eventually affect inflation.

The theoretical literature advanced several possible explanations as to why the interest rate pass-through may be slow, incomplete, more than complete, or asymmetric. These include asymmetric information, menu costs, switching costs, risk sharing, ownership of the financial system, economic conditions, and bank concentration. While the empirical literature for advanced and emerging economies is vast, the evidence for the Dominican Republic remains limited.

In this paper we estimate the interest rate pass-through for retail rates in the Dominican Republic. The contribution to the existing literature is twofold. First, we provide a wide spectrum of results for retail rates at different maturities and for a recent period, with some analysis of the fiscal costs (i.e., public sector borrowing costs) associated with monetary policy. Second, we test for asymmetries in the adjustment to equilibrium and simulate the symmetric and asymmetric adjustment of retail rates to changes in the monetary policy rate.

We find evidence of complete pass-through to retail rates, confirming the effectiveness of the monetary policy transmission mechanism. Similarly, our results indicate that government domestic bond yields increase when monetary policy becomes more contractionary. However, we also find evidence of a faster pass-through to lending rates than to deposit rates. Moreover, short-term deposit rates respond faster to policy rate cuts with respect to hikes, while short-term lending rates respond faster to policy rate hikes with respect to cuts. The theoretical literature associates asymmetries in the speed of adjustment to collusive market behaviors. Thus, measures to boost competition in the financial system could help to achieve a symmetric adjustment of retail rates.

The paper is organized as follows. Section II reviews the theoretical contributions explaining rigidities and asymmetries in the interest rate pass-through, comments on the institutional features of the financial system of the Dominican Republic, and discusses the empirical evidence for the country. Section III presents the empirical strategy. Section IV discusses the results. Section V concludes.

## II. THE PASS-THROUGH IN THE DOMINICAN REPUBLIC

In this section we briefly review the main theoretical reasons for which retail rates may show stickiness or asymmetries when the monetary policy changes. Then, we describe the

institutional framework of the Dominican banking system and review the existing empirical literature on the interest-rate pass through for the Dominican Republic.

### **A. Theoretical Contributions**

Stiglitz and Weiss (1981) relate stickiness to asymmetric information. When banks perceive the default risk to be high, they are inclined to maintain a large spread between lending and deposit rates. However, given that borrowers that accept higher rates are likely to be of poor quality and borrowers with less risky investments are likely not to borrow if rates increase (i.e., adverse selection), and given that any increase of lending rates will give incentives for borrowers to choose riskier projects (i.e., moral hazard), any monetary policy rate increase would raise the probability of loan default. Thus, banks may decide not to raise their rates albeit their cost for getting funds increases, and reach the equilibrium in the loan market by rationing credit. As a result, lending rates may be rigid upwards and adjustment may turn out to be asymmetric.

Bernanke et al. (1996) show that financial frictions may cause large fluctuations in economic activity and, consequently, in retail rates. In presence of asymmetric information, lenders may require borrowers to collateralize their assets. In response to a monetary policy rate hike, for example, the balance sheets of firms deteriorate owing to the fall in asset prices. As a result, firms have less ability to borrow, which ultimately affects investment. This starts a vicious cycle (i.e., financial accelerator) where lower economic activity dampens asset prices, which further tightens financing conditions and reduces economic activity. This mechanism may induce overpass-through from the monetary policy rate to the retail rates.<sup>3</sup>

De Bondt (2005) uncovers another reason for which asymmetric information leads to overpass-through. Banks may react to risks involved in asymmetric information by raising interest rates beyond the size of the increase in the policy dictated rate, instead of rationing credit. In other words, lending rates must increase by an amount greater than the increase in the monetary policy rate to compensate for the decrease in the probability of repayment. However, there is a limit to this. Beyond some interest rate level, banks will not be able to increase the interest rate sufficiently to compensate for this risk and all lending will be made to the less risky borrowers. However, until this happens, the bank rate on these loans should be very sensitive to changes in the market interest rate.

Rotemberg and Saloner (1987) explain price rigidity by formulating the menu costs theory. This predicts that firms will change their prices only when the benefits from doing this are greater than the costs of changing prices (e.g., printing, advertising new price lists, communicating to customers, etc.). Hence, if the monetary policy rate change is perceived as

---

<sup>3</sup> See also Gertler and Karadi (2011) and Gerali et al. (2010).

small and temporary, and the costs associated to changing retail rates are higher than the benefits, banks may opt to delay the retail rate changes.<sup>4</sup>

Lowe and Rohling (1992) argue that switching costs can cause retail rates rigidity. Banks incur costs to collect information about the risk profile and behaviors of their customers, and these are generally passed on to them as one-off fees. If costs associated to switching to a different bank are high enough, customers may decide to accept a more penalizing interest rate by their current bank instead of incurring these costs. Thus, higher switching costs may imply stickiness of retail rates as well as asymmetric adjustment.

Fried and Howitt (1980) show that banks and customers are better off by sharing risk and this increases retail rates rigidity. More specifically, as movements in interest rates affect banks' and customers' earnings, banks could offer an equilibrium risk-sharing agreement (e.g., an insurance contract) for which banks agree to compensate customers in case of unfavorable interest rate movements against the payment of a fee. Customers would then hesitate to change banks because of this agreement. Similarly, Berger and Udell (1992) highlight the role played by implicit contracts for which banks interested in long-term relationships are willing to offer more stable interest rates. All these kinds of agreements result in stickier retail rates.

The ownership structure of the financial system also plays a role in shaping the transmission mechanism of monetary policy. State-owned financial institutions are often key in achieving policy objectives of governments, and as a result maximizing profit is not their primary aim. In this context, interest rates are likely to adjust with a delay due to inefficiencies and political considerations, hence causing stickiness in interest rate adjustment.

Égert et al. (2007) and Égert and Mac Donald (2009) highlight the role of macroeconomic conditions in affecting retail rates stickiness. If volatility is high, the information content of policy signals is reduced as noise increases. Consequently, banks would wait more to change their rates. Moreover, the pass-through is likely to be faster during high inflation periods as prices are adjusted more frequently. High economic growth also favors a quicker pass-through as banks find it easier to pass on changes when conditions are favorable.

The interest rate pass-through may be asymmetric because bank concentration leads to oligopolistic behaviors. On the one hand, the collusive behavior hypothesis of Hannan and Berger (1991) suggests that following an increase in the monetary policy rate, deposit rates could be rigid upwards because higher deposit rates represent an additional cost for banks. Similarly, the lending rates could exhibit downward rigidity in reaction to a reduction in the monetary policy rate as lower lending rates imply lower profits for banks. On the other hand, the adverse customer reaction hypothesis indicates that if customers have bargaining power

---

<sup>4</sup> De Bondt (2002) and De Bondt et al. (2003) further analyze the role of expectations of future interest rates, explaining that the current change in retail rates also depends on the extent to which the monetary policy rate change has been anticipated and how it changes future rates.

deposit rates could be rigid downwards when the monetary policy rate falls and lending rates may be rigid upwards when the monetary policy rate increases.

## **B. Characteristics of the Dominican Financial System and Empirical Evidence**

The recent history of the Dominican Republic's monetary policy starts with the Monetary and Financial Law of 2002. The law strengthened the institutional framework for the conduct of monetary policy by establishing price stability as the main central bank's mandate. Starting in 2004, the central bank moved away from exchange rate targeting and transitioned to monetary targeting. In this context, it introduced an overnight deposit window and a Lombard facility, which created a corridor for the interbank rate. The overnight rate served as signal of the monetary policy stance.

The monetary targeting anticipated the transition to the inflation targeting regime. While the central bank managed to significantly reduce inflation and stabilize the economy under the monetary targeting, financial innovation and deregulation as well as financial sector reforms generated a growing instability in money demand, weakening the relationship between money and inflation (Andújar, 2014). To strengthen monetary policy effectiveness, the BCRD adopted an inflation targeting regime in January 2012. Starting in February 2013, the authorities introduced the monetary policy rate as the benchmark rate, which is in the middle of a corridor bounded by the one-day deposit and expansion facilities.

Since the financial crisis of 2003-04, the financial system developed considerably but remains highly concentrated. As of June 2015, the system is composed of 65 financial entities with assets over 45 percent of GDP and a loan portfolio of 27 percent of GDP.<sup>5, 6</sup> Most of the loans go to the commercial sector (58.7 percent), while the remainder is split between personal consumption loans (24 percent) and mortgage loans (17.3 percent). Commercial and mortgage loans are usually backed by a collateral, which contributes to lower the interest rate, as can be seen in Figure 1. In June 2006 the three main banks used to represent 57.5 percent of deposits and 58.2 percent of loans, while as of June 2015 they represent 67.7 percent of deposits and 69.0 percent of loans.

As discussed, the degree of concentration is often associated with collusive behavior. This generally translates into high profits for banks as well as asymmetries in the adjustment of retail rates to the monetary policy rates. As shown in Figure 2, spreads are high at all maturities (6.5 percent on average for three-month spread over 2006-15) and vary significantly when the monetary policy rate changes<sup>7</sup>. This suggests that deposit and lending

---

<sup>5</sup> Ratios to GDP are calculated using the 2014 nominal GDP.

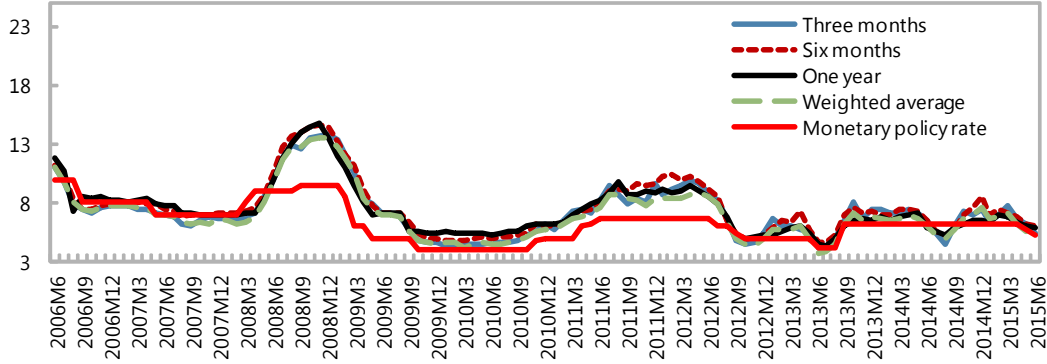
<sup>6</sup> The financial system consists of 17 commercial banks (85.8 percent of the system assets), 10 saving and credit institutions (11.1 percent of the system assets), 19 credit unions (1.9 percent of the system assets), several credit corporations (0.3 percent of the system assets), and a development bank (0.9 percent of the system assets).

<sup>7</sup> While this is true for spreads at all maturities, we present only the three-month spread in the chart for space reasons.

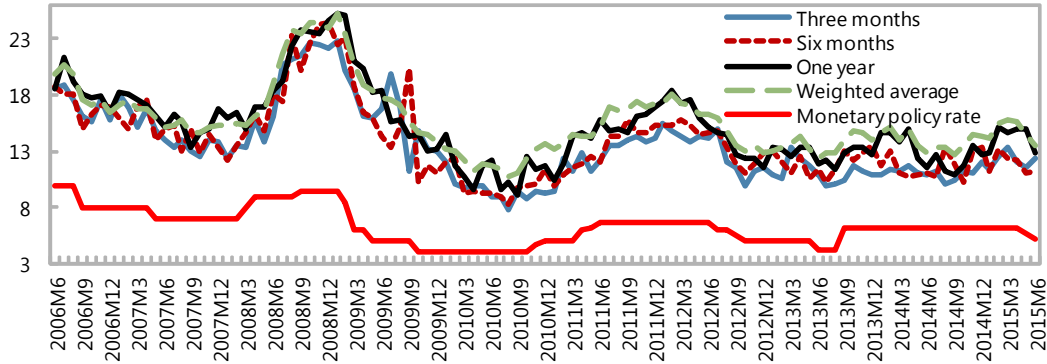
rates may either react differently to changes in the monetary policy rate, react asymmetrically to lifts and cuts in the monetary policy rate, or both.

**Figure 1. Monetary Policy and Retail Rates**  
(Percent)

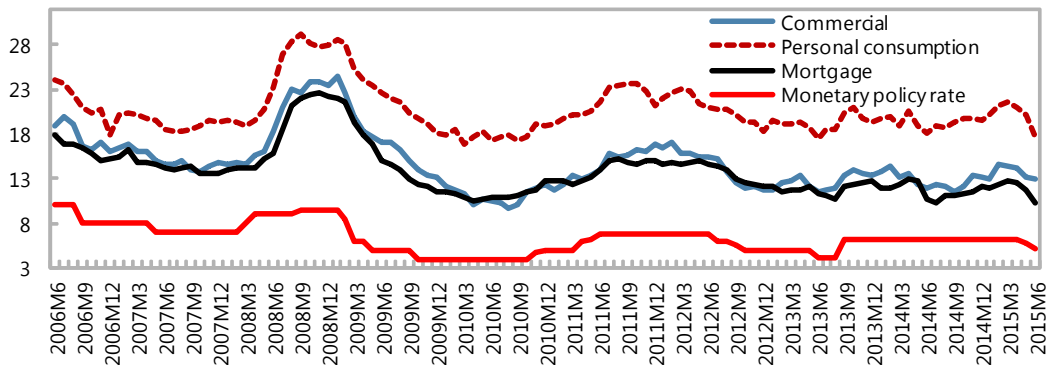
**Deposit Rates**



**Lending Rates**



**Lending Rates by Category**



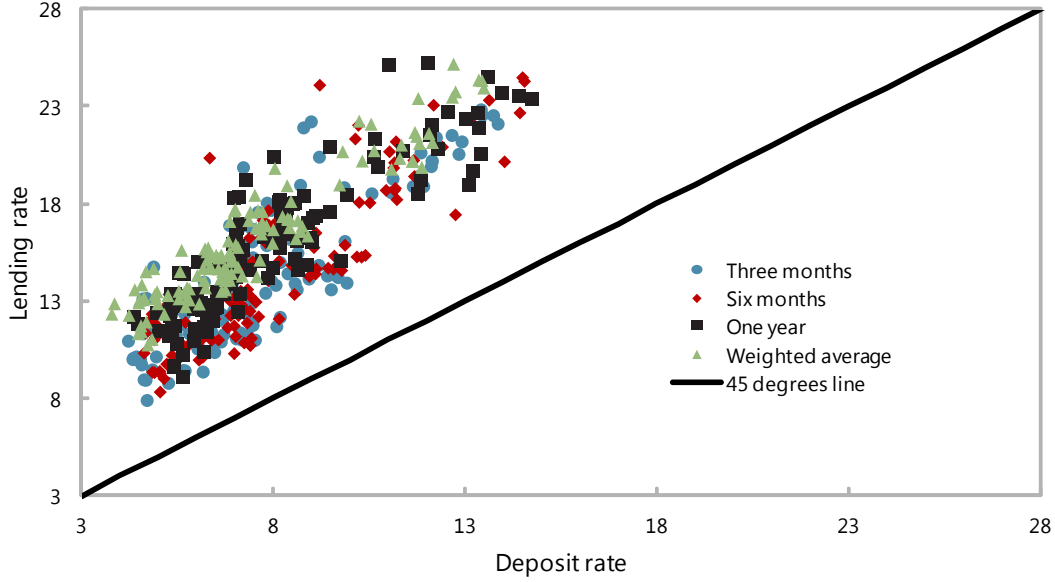
Notes: The monetary policy rate is a proxy of the average monetary policy rate for the month, which is equal to the last month's value of the monetary policy rate.

Source: Central Bank of the Dominican Republic.

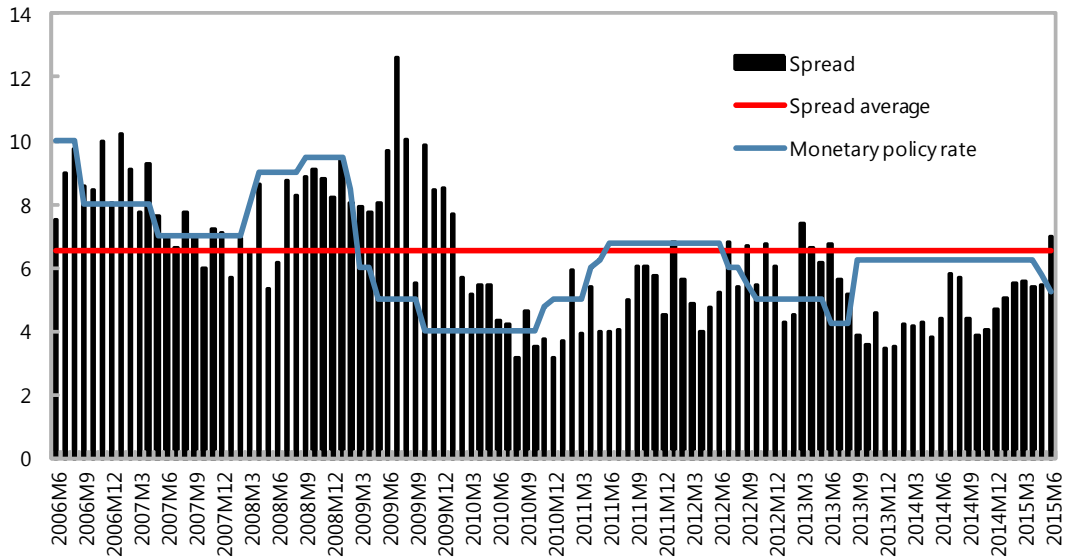


**Figure 2. Banks' Margins (Percent)**

**Banks' Margins at All Maturities (Percent)**



**Banks' Margins on Three-Month Deposits/Loans (Percent)**



Notes: The monetary policy rate is a proxy of the average monetary policy rate for the month, which is equal to the last month's value of the monetary policy rate.  
 Source: Authors' calculations.

Table 1 summarizes the findings of the empirical literature on interest rate pass-through for the Dominican Republic. Sample size, interest rate variables, model specifications, and estimation methodologies vary significantly across studies. Most of the literature finds evidence of overpass-through to lending rates, albeit the results present a significant variation in the estimated pass-through. As for the deposit rates, results are generally mixed, with estimates ranging from incomplete to overpass-through.

**Table 1. Literature for the Dominican Republic**

Author	Empirical approach	Sample period	Estimated long-run coefficient	Explanatory variables
González Pantaleón (2010)	ECM	Quarterly data (1996Q1-2010Q1) and monthly data (1996M1-2010M4), excluding 2003 and 2004	Loans: 0.96-1.44 Deposits: 0.91-1.23 Commercial loans: 1.04-1.25 Personal cons. loans: 0.96-1.13 Mortgage loans: 1.15-1.45	Interbank rate, external interest rate, EMBI spread, reserve requirement coefficient, Lombard window rate.
Rivas (2011)	Asymmetric ECM	Monthly data (1996M1-2011M8)	Loans: 0.90-1.42 Deposits: 1.00	Interbank rate
Medina, Carrión, and Frantischek (2011)	Panel S-GMM	Annual data (2004–10) for 40 countries	Loans (DR): 0.65	Monetary policy rate, financial dollarization, exchange rate flexibility, size of the banking sector, banking concentration, and interactions.
Andujar (2012)	ECM	Monthly data (1996M1-2007M12)	Loans: 0.94 Deposits: 0.73-0.77	Interbank rate
Aristy Escuder (2014)	ADL model	Monthly data (2008M1-2014M8)	Loans: 2.66 Deposits: 1.65	Monetary policy rate (overnight)
BCRD (2015)	N/A	N/A	Loans: 1.06-1.63 Deposits: 0.85-0.92	

Notes: The estimated long-run coefficient refers to different maturities depending on the paper.

González Pantaleón (2010) finds over pass-through of the interbank rate to both lending and deposit rates. He employs an error correction model (ECM) to estimate a specification that includes several explanatory variables. He finds that the Emerging Market Bond Index (EMBI) spread, the reserve requirement coefficient, and the Lombard window rate are significantly associated to increases in retail rates.

Rivas (2011) is the first to explore asymmetries in the interest rate pass-through for the Dominican Republic. With an asymmetric ECM applied to a parsimonious specification that includes only the interbank rate, he studies the adjustment of the retail rates to positive or negative changes in the monetary policy rate. He finds overpass-through for the six-month and one-year lending rates and complete pass-through for the same maturity deposit rates. He also finds evidence of increased efficiency of monetary transmission mechanism in the post-crisis period compared to the pre-crisis one. Finally, he does not find any evidence of asymmetric adjustment.

Medina et al. (2011) find a high degree of stickiness in the pass-through to deposit and lending rates. Using a 40-country panel data over the period 2004-10, the authors estimate a dynamic specification with system generalized method of moments (S-GMM) that includes interaction terms between the monetary policy rate and a set of explanatory variables. The authors find that although the estimated pass-through for the Dominican Republic is

incomplete owing to high dollarization and limited exchange rate flexibility, it is greater than for Central American countries.

By employing an ECM, Andujar (2012) finds a complete pass-through to lending rates and an incomplete one to deposit rates. Also, his results suggest that starting in 2005 the monetary transmission mechanism became more efficient and that changes in the interbank rate take from four to five months to be reflected in retail rates. Finally, using simulations the author shows that permanent changes in the policy rates are associated with a stronger reaction of retail rates compared to temporary changes.

Aristy (2014) finds evidence of overpass-through for both lending and deposit rates. More specifically, he estimates an autoregressive distributed lag (ADL) model with a parsimonious specification including only the overnight rate. His results suggest that the size of the overpass-through is much larger than in the existing literature.

BCRD (2015) also finds overpass-through to the lending rates, but incomplete or complete pass-through to the deposit rates. While estimation details are not available, the study presents results for a wide range of interest rates and for the calculations of the speed of adjustment in months. This ranges between one and two months for all interest rates, with the exception of the six-month lending rate, which adjusts in about four months.

### III. EMPIRICAL STRATEGY

Let  $rr_t$  denote the endogenously determined retail rate at time  $t$ . It can be modeled as:

$$rr_t = \alpha + \beta_1 mpr_t + \beta_2 X_t + u_t \quad (1)$$

where  $\alpha$  is an intercept which denotes a mark-up or mark-down on the retail rate to reflect market conditions,<sup>8</sup>  $mpr_t$  is the monetary policy rate,<sup>9</sup>  $X_t$  includes a set of factors influencing the retail rate beyond the monetary policy rate,  $\beta_1$  and  $\beta_2$  are the relative coefficients, and  $u_t$  is a stochastic error term that captures unobserved heterogeneity.<sup>10, 11</sup>

Departing from most papers in the literature, we employ a richer specification with the vector of exogenous covariates  $X_t$  encompassing four variables. First, we add the reserve requirement coefficient for commercial bank deposits at the central bank in local currency as

---

<sup>8</sup> See Marotta (2009).

<sup>9</sup> The monetary policy rate used in the regressions is a proxy of the average monetary policy rate for the month. Given that the decision to change or maintain the rate is taken during the last week of the month, we assume that the average for the current month is equal to the last month's value of the monetary policy rate.

<sup>10</sup> See Appendix I for a detailed description of the variables.

<sup>11</sup> A trend is excluded a priori because there is no theoretical reason for which interest rates should exhibit a deterministic time trend (see Hamilton, 1994).

increases in the coefficient correspond to withdrawals of liquidity in the financial system, resulting in higher retail rates. Second, we also add non-performing loans (NPLs) as a share of total loans with the aim of capturing increases in interest rates that compensate higher banks' losses when NPLs increase. Third, we include the EMBI spread as a time-varying measure of the risk premium. Fourth, we add the Volatility Index (VIX) to reflect external market's volatility (especially advanced economies) expectation for the next 30 days. The expected effect of the VIX is ambiguous. When volatility in advanced economies is high, interest rates may drop as capital flies toward emerging markets such as the Dominican Republic, or may go up if volatility is perceived as a global issue and capital flies to quality. Finally, we add two dummy variables for regime changes. The first one is for the inflation targeting period and the second is for the period in which the monetary policy rate was introduced as a benchmark.

Our attention falls on the fraction of the change in monetary policy rate reflected in changes in retail rates over the long run.<sup>12</sup> This is expressed by the parameter  $\beta_1$ , which is close to zero when the transmission mechanism is weak and takes value one when the pass-through is complete. As discussed, a bunch of factors may prevent the pass-through to be complete, and in some cases,  $\beta_1$  could be higher than one, implying overpass-through.

With the purpose of having a wide glance at the financial system, we analyze the impact of changes in monetary policy on several retail rates with monthly data over the period June 2006-June 2015. In particular,  $rr_t$  is, alternatively, the deposit or lending rate at 90, 180, 360 days, the weighted average rate, as well as the commercial, personal consumption, and mortgage lending rate of commercial banks.<sup>13</sup> Also, we explore the interest rate pass-through from the monetary policy rate to government domestic bond rates for instruments at five, seven, and ten years, as well as for ten-year government bonds issued in the sovereign market. However, since these kind of instruments are not issued every month, we rely on the interest rate in the secondary market. Given the reduced sample size, results need to be taken with caution.<sup>14</sup>

The literature often finds that interest rate series are non-stationary. In presence of unit roots, estimating equation (1) with ordinary least squares would result in spurious coefficients. Thus, we first test the levels and first differences of all series for unit root employing the Augmented Dickey Fuller (ADF) test. When the hypothesis of unit root cannot be rejected

---

<sup>12</sup> As we are interested in estimating the pass-through from the monetary policy rate—which is clearly exogenous—to retail rates, and to avoid relying on asymptotic properties of the maximum likelihood estimation, we opt for a single equation approach rather than a multivariate one.

<sup>13</sup> Due to data availability, we limit our analysis to commercial banks, which represent 85.8 percent of the financial system assets.

<sup>14</sup> Observations start in May 2009 for the five-year domestic bonds, February 2010 for the seven-year domestic bonds, August 2010 for the ten-year domestic bonds, and April 2010 for the ten-year sovereign bonds, and end in June 2015. However, the series contain some missing observations.

for the levels, we test for cointegration between the retail rates and the monetary policy rate using the Engle-Granger test.

In those groups of data for which cointegration is not found, we estimate the following ADL model:

$$\Delta rr_t = \eta + \gamma_1 \Delta mpr_t + \sum_{i=1}^n \gamma_i \Delta mpr_{t-i} + \delta_1 \Delta X_t + \sum_{k=1}^m \delta_k \Delta X_{t-k} + \sum_{j=1}^p \zeta_j \Delta rr_{t-j} + \varepsilon_t \quad (2)$$

where  $\Delta$  is the difference operator,  $\eta$  is the constant,  $\gamma_1$  is the short-run pass-through (i.e., within the same month),  $\delta_k$  are the coefficients for the changes in the variables of vector  $X_t$  and their lags,  $\zeta_j$  are the coefficients for the changes of the lags of the dependent variable,  $n$ ,  $m$ , and  $p$  are the maximum number of lags, and  $\varepsilon_t$  is a white noise error term. The long-run pass-through coefficient  $\beta_1$  can be retrieved as  $\sum_{i=1}^n \gamma_i / (1 - \sum_{j=1}^p \zeta_j)$ .

For groups of data sharing a long-run relationship (i.e., cointegrated), equation (2) can be re-parameterized into an error correction model (ECM) that ties the short-run disequilibrium to the long-run equilibrium as in Hendry and Nielsen (2007):

$$\Delta rr_t = \eta + \gamma_1 \Delta mpr_t + \sum_{i=1}^n \gamma_i \Delta mpr_{t-i} + \delta_1 \Delta X_t + \sum_{k=1}^m \delta_k \Delta X_{t-k} + \rho u_{t-1} + \varepsilon_t \quad (3)$$

where  $\rho$  is the percentage of the previous period deviation from to the long-run equilibrium  $u_{t-1}$  that is corrected in every period  $t$ . In other words, it represents the speed at which bank rates adjust back to equilibrium after a change in the monetary policy rate.<sup>15</sup>

Enders and Siklos (2001) show that the Engle-Granger cointegration test is misspecified if adjustment is asymmetric. In particular, they argue that it is a special case of the threshold autoregressive (TAR) model, which allows testing for asymmetric cointegration. The TAR model can be written as:

$$\Delta u_t = I_t \rho_1 u_{t-1} + (1 - I_t) \rho_2 u_{t-1} + \sum_{l=1}^q \gamma_l \Delta u_{t-l} + v_t \quad (4)$$

where  $I_t$  is the Heaviside indicator function such that:

---

<sup>15</sup> The literature (see Doornik and Hendry, 1994) also calculates the mean adjustment lag as  $(1 - \gamma_1)/\rho$ , which reveals how many months it takes for the change in the monetary policy rate to be fully reflected in retail rates. This measure, however, assumes that there is complete pass-through (i.e.,  $\beta_1 = 1$ ), and that the portion of adjustment  $\rho$  is the same every month (rather than being a percentage of previous year deviation from equilibrium).

$$I_t = \begin{cases} 1, & u_{t-1} \geq \tau \\ 0, & u_{t-1} < \tau \end{cases} \quad (5)$$

and  $\rho_1$  and  $\rho_2$  are the estimates if  $u_{t-1}$  is above or below the threshold  $\tau$ , respectively. The value of  $\tau$  is unknown and can be estimated using the method illustrated in Chan (1993). However, it can also be set *a priori*. In our case, we set it to zero and we also estimate it. Enders and Siklos (2001) propose the  $\Phi$  and the t-max statistics to test for asymmetric cointegration. The  $\Phi$  statistic is an  $F$ -statistic testing the null hypothesis that  $\rho_1 = \rho_2 = 0$ , while the t-max is a  $t$ -statistic testing the null hypothesis with the largest  $\rho_i = 0$ .<sup>16</sup> Hence, if the null hypothesis of no cointegration is rejected, we can test the null hypothesis that  $\rho_1 = \rho_2$  by a standard  $F$ -statistic. A rejection of this hypothesis implies asymmetric adjustment.

Policymakers may be interested in reducing large changes in the retail rates. Enders and Granger (1998) and Caner and Hansen (1998) propose a variation of the TAR model of equation (4), known as momentum TAR (M-TAR) model:

$$\Delta u_t = M_t \rho_1 u_{t-1} + (1 - M_t) \rho_2 u_{t-1} + \sum_{l=1}^q \gamma_l \Delta u_{t-l} + v_t \quad (6)$$

where  $M_t$  is an alternative Heaviside indicator function to the one in equation (5) such that:

$$M_t = \begin{cases} 1, & \Delta u_{t-1} \geq \tau \\ 0, & \Delta u_{t-1} < \tau \end{cases} \quad (7)$$

As in the case of the TAR model, we test for asymmetric cointegration both when  $\tau$  is set to zero and when it is endogenously determined within the M-TAR framework. The interpretation of the TAR and M-TAR models, however, differs. The TAR model tests if the deviation from the long-run equilibrium is persistent assuming equal magnitudes of positive and negative shocks, whereby the M-TAR model tests if the deviation from the long-run equilibrium is persistent irrespective of the magnitude of the disequilibrium.

If asymmetric cointegration is present, the ECM in equation (3) can be rewritten as the following TAR model:

$$\begin{aligned} \Delta rr_t = \eta + \gamma_1 \Delta mpr_t + \sum_{i=1}^n \gamma_i \Delta mpr_{t-i} + \delta_1 \Delta X_t + \sum_{k=1}^m \delta_k \Delta X_{t-k} + I_t \rho_{1,rr} u_{t-1} \\ + (1 - I_t) \rho_{2,rr} u_{t-1} + \varepsilon_t \end{aligned} \quad (8)$$

or the following M-TAR model:

---

<sup>16</sup> Note that the necessary conditions for convergence are for the parameters  $\rho_i$  to be negative.

$$\Delta rr_t = \eta + \gamma_1 \Delta mpr_t + \sum_{i=1}^n \gamma_i \Delta mpr_{t-i} + \delta_1 \Delta X_t + \sum_{k=1}^m \delta_k \Delta X_{t-k} + M_t \rho_{1,rr} u_{t-1} + (1 - M_t) \rho_{2,rr} u_{t-1} + \varepsilon_t \quad (9)$$

where  $\rho_{1,rr}$  and  $\rho_{2,rr}$  are the asymmetric speed of adjustment parameters.

#### IV. RESULTS

We first present the baseline results for the interest-rate pass-through. Then, we present the results accounting for the existence of asymmetries. Finally, we simulate the impact of a change in the monetary policy rate on retail rates over one year.

##### A. Baseline

We test for unit root and cointegration.<sup>17</sup> The results of the ADF test on the levels including both a constant and a trend suggest that the null hypothesis of unit root presence cannot be rejected at five percent significance level for all series, with the exception of the weighted average deposit rate. However, as the evidence of stationarity is not compelling, we proceed to test stationarity for first differences. After first-differencing, the null hypothesis of unit root presence is safely rejected for all series. The Engle-Granger test's null hypothesis of no cointegration is rejected for all series combinations except the government bond rates, suggesting that the monetary policy rate shares a long-run relationship only with the retail rates.

The results for the estimation of the error correction model for retail rates are reported in Table 2. The estimation of equation (1) reveals that the pass-through to deposit rates is complete, as the long-run coefficient ranges between 1.0 and 1.1. Similarly, the pass-through to lending rates is complete, with the long-run coefficient ranging from 1.1 to 1.2. To confirm the statistical validity of the finding of complete pass-through, we employ a Wald test with the null hypothesis of the long-run pass-through coefficient being equal to one. In all cases, we cannot reject the null hypothesis.

Other explanatory variables turn out significant. An increase in the EMBI spread is unequivocally reflected in higher deposit and lending rates. The effect is robust across maturities and lending categories. An increase in the reserve requirement coefficient is found to have a positive effect only on three-month lending rates, consistent with a reduction of liquidity. An increase in the NPL ratio is associated with lower deposit rates, possibly reflecting the need of banks to find liquidity. However, this is not significant in the regressions of one-year deposit rates. Finally, we find some evidence of lower lending rates owing to heightened advanced economies' volatility risk, proxied by the VIX. However, the effect is relatively small and not robust across maturities.

---

<sup>17</sup> See Appendix II for the test results.

The estimation of equation (3) provides information about the short-run effect on retail rates. The short-run effect of a one percentage point increase in the change of the monetary policy rate on the change of deposit rates ranges between 0.5 and 0.7 percentage points. In other words, 50 to 70 percent of the pass-through is transmitted to deposit rates within the same month. The short-run impact on the change in lending rates ranges between 0.5 and 0.8 percentage points, with the exception of the short-run impact for the six-month lending rate, which is 1.0 percentage points. The latter is abnormally high compared to other maturities and the reason may lie with the idiosyncratic movements in the six-month lending rate, therefore results should be taken with caution.<sup>18</sup> The only maturity for which the short-run impact on the lending rate is higher than the one on the deposit rate is the three-month one, implying a decrease in the spread in the short-run.

The speed of adjustment is higher for lending rates. In general, deviations from the long-run equilibrium are more quickly corrected in the case of lending rates as the relative speed of adjustment ranges between -0.3 and -0.7, compared to a coefficient range between -0.2 and -0.4 for deposit rates.

Other explanatory variables present results generally consistent with the long-term equation estimations. Changes in the EMBI spread are associated with increases in deposit rates and most of the lending rates. Changes in the reserve requirement also increase deposit and lending, however these effects are not robust across maturities and are not significant for lending categories. A positive change in the NPL ratio is associated with a fall in deposit rates and with increases in lending rates. While this finding is not robust for all rates, it underscores the banks' need to find liquidity when more loans become non-performing. Finally, changes in the VIX index turn out to be significant only in raising the change in the personal consumption rate and by a minor amount.

Table 3 presents the results of the ADL estimation in equation (2) for the government bond rates.<sup>19</sup> As expected, changes in the monetary policy rate only affect changes in the rates of domestically-issued bonds. More specifically, a change in the monetary policy rate by one percentage point is associated with a short-run impact on the change of domestically-issued bond rates by 0.5-0.6 percentage points, depending on the maturity of the instrument. By using the coefficient of the lagged differenced dependent variable, we can retrieve the long-run coefficient, which ranges between 0.8 and 0.9 percentage points. Thus, the pass-through in this case seems less than complete.

---

<sup>18</sup> Alternative estimations using dummy variables for September and October of 2009 present a short-run coefficient of 0.8. However, we opt to drop dummies in the baseline specifications as we have no clear reasons for including them.

<sup>19</sup> Given the short sample and the little variation in the monetary policy rate over it, we also estimate the ADL model replacing the monetary policy rate with the interbank rate. The results are similar and available from the authors upon request.



## B. Asymmetries

We employ the TAR and M-TAR tests to explore asymmetric cointegration between the monetary policy rate and all retail rates.<sup>20</sup> As a first step, we set the threshold to zero. In the case of the TAR test, the null hypothesis of symmetric cointegration cannot be rejected. The results are similar in the case of the M-TAR test, as we cannot find evidence of asymmetric cointegration. As a second step, we let the TAR and M-TAR threshold to be endogenously determined. When employing the TAR test, we find evidence of asymmetric cointegration for the following series: weighted average deposit rate, three-month, six-month, and one-year lending rates, and the mortgage lending rate. The M-TAR version of the test finds even stronger evidence of asymmetric cointegration, as it rejects the null hypothesis of symmetric cointegration for all series, except the six-month lending rate.

The results of the M-TAR cointegration tests with the endogenously determined threshold warrant the use of the asymmetric ECM. Table 4 reports the results of the estimation of equation (9) for all series but the six-month lending rate, for which the hypothesis of symmetric cointegration cannot be rejected. Our attention falls on the speed of adjustment above and below the threshold. If the retail rate is above its equilibrium value after a decrease in the monetary policy rate, then the retail rate will adjust by the coefficient of the speed of adjustment above  $\tau$  in every period. Conversely, if the retail rate is below its equilibrium value after an increase in the monetary policy rate, then the lending rate will adjust by the coefficient of the speed of adjustment below  $\tau$  in every period.

We find evidence of significant asymmetric adjustment for the three-month rates. In particular, we employ a Wald test with a null hypothesis for which the speed of adjustment above  $\tau$  is equal to the speed of adjustment below  $\tau$ . Our results suggest that the speed of adjustment for the three-month deposit rate is higher when the monetary policy rate falls. Conversely, the speed of adjustment for the three-month lending rate is higher when monetary policy rate increases. More specifically, the speed of adjustment for positive deviations is 1.4 times the one for negative deviations in the case of deposit rates, suggesting that negative deviations are more persistent, whereas the speed of adjustment for negative deviations is two times the one for positive deviations in the case of lending rates, suggesting that positive deviations are more persistent.

For rates at higher maturities the two speed of adjustment coefficients are not significantly different from each other. However, short maturities provide a better measure as loans are typically not collateralized and this allows isolating the balance sheet channel (Mishkin, 1995). In other words, the pass-through does not depend on market price variations that influence the value of collateral. This reinforces the evidence of the results on three-month rates.

---

<sup>20</sup> See Appendix II for the test results.

**Table 2. ECM Estimation for Retail Rates**

	Deposit rates				Lending rates				Loan category rates		
	Three months	Six months	One year	Weighted average	Three months	Six months	One year	Weighted average	Commercial	Personal consumption	Mortgage
<b>Long-run equation</b>											
Monetary policy rate	1.098*** (0.087)	1.115*** (0.112)	1.018*** (0.096)	1.036*** (0.087)	1.076*** (0.151)	1.175*** (0.111)	1.169*** (0.139)	1.164*** (0.127)	1.186*** (0.133)	1.014*** (0.154)	0.966*** (0.106)
Reserve requirement coefficient	-0.092 (0.108)	-0.067 (0.145)	-0.0940 (0.12)	-0.040 (0.119)	0.4** (0.17)	0.184 (0.152)	0.389** (0.174)	0.132 (0.143)	0.176 (0.14)	-0.141 (0.205)	0.202 (0.123)
NPLs	-0.401*** (0.144)	-0.393** (0.161)	-0.2410 (0.157)	-0.329** (0.151)	0.358 (0.263)	0.312 (0.238)	0.155 (0.199)	0.127 (0.214)	0.170 (0.21)	-0.212 (0.301)	0.102 (0.194)
EMBI	0.407*** (0.067)	0.329*** (0.08)	0.22*** (0.081)	0.345*** (0.074)	0.993*** (0.181)	0.688*** (0.11)	0.756*** (0.125)	0.699*** (0.141)	0.729*** (0.143)	0.56*** (0.167)	0.518*** (0.098)
VIX	-0.025* (0.013)	0.006 (0.018)	0.0190 (0.022)	-0.008 (0.016)	-0.13*** (0.044)	-0.043 (0.034)	-0.069*** (0.025)	-0.049* (0.029)	-0.053* (0.029)	0.002 (0.039)	-0.004 (0.022)
Dummy inflation targeting	-0.185 (0.511)	-0.056 (0.558)	-0.4620 (0.436)	-0.254 (0.421)	-0.144 (0.539)	0.673 (0.436)	0.483 (0.541)	-0.095 (0.35)	-0.155 (0.387)	-0.057 (0.425)	0.366 (0.257)
Dummy monetary policy rate introduction	-1.289** (0.544)	-1.208 (0.761)	-1.206** (0.555)	-0.916** (0.456)	0.709 (0.463)	-0.452 (0.385)	0.223 (0.731)	-0.066 (0.455)	0.164 (0.464)	-1.332** (0.531)	-0.665** (0.304)
Constant	2.383 (1.451)	1.786 (2.025)	2.5090 (1.702)	1.257 (1.59)	-3.071 (2.594)	-0.735 (2.098)	-1.494 (2.594)	3.587* (1.964)	1.575 (2.057)	15.139*** (2.658)	1.824 (1.696)
Observations	109	109	109	109	109	109	109	109	109	109	109
R-squared	0.862	0.859	0.847	0.871	0.862	0.847	0.855	0.884	0.892	0.776	0.898
Adjusted R-squared	0.852	0.849	0.837	0.862	0.849	0.837	0.845	0.876	0.885	0.760	0.891
S.E. of regression	0.855	0.899	0.863	0.802	1.316	1.387	1.355	1.083	1.083	1.340	0.939
Wald test (H0: pass-through = 1)	1.277	1.048	0.035	0.176	0.257	6.143*	1.467	1.674	1.973	0.009	0.102
<b>Short-run equation</b>											
Speed of adjustment	-0.417*** (0.087)	-0.232*** (0.076)	-0.335*** (0.116)	-0.318*** (0.083)	-0.534*** (0.094)	-0.691*** (0.097)	-0.547*** (0.08)	-0.291*** (0.078)	-0.288*** (0.078)	-0.265*** (0.093)	-0.269** (0.104)
Diff. monetary policy rate	0.668*** (0.107)	0.641*** (0.1)	0.474*** (0.162)	0.583*** (0.105)	0.528** (0.254)	1.025*** (0.251)	0.778*** (0.158)	0.781*** (0.127)	0.777*** (0.133)	0.758*** (0.174)	0.564*** (0.135)
Diff. reserve requirement coefficient	-0.010 (0.097)	0.235*** (0.059)	0.0300 (0.061)	0.174*** (0.038)	-0.018 (0.248)	0.405*** (0.12)	0.000 (0.209)	0.257* (0.133)	0.231 (0.144)	0.191 (0.148)	0.105 (0.188)
Diff. NPLs	-0.304** (0.139)	-0.269** (0.115)	-0.2710 (0.222)	-0.323*** (0.103)	0.718** (0.277)	-0.502 (0.429)	0.224 (0.317)	0.444*** (0.165)	0.260 (0.164)	0.705** (0.3)	0.117 (0.141)
Diff. EMBI	0.278*** (0.078)	0.234** (0.089)	0.199** (0.08)	0.22*** (0.08)	0.663*** (0.231)	0.244 (0.297)	0.150 (0.109)	0.276** (0.107)	0.307*** (0.11)	-0.004 (0.083)	0.188** (0.092)
Diff. VIX	-0.008 (0.015)	0.001 (0.011)	0.025* (0.015)	0.008 (0.011)	-0.044 (0.037)	-0.022 (0.188)	0.008 (0.032)	-0.005 (0.018)	-0.006 (0.02)	0.033** (0.016)	0.014 (0.015)
Dummy inflation targeting	-0.075 (0.286)	-0.149 (0.225)	-0.1420 (0.191)	-0.090 (0.202)	-0.146 (0.144)	-0.032 (0.25)	-0.125 (0.295)	-0.137 (0.131)	-0.140 (0.127)	-0.110 (0.116)	-0.106 (0.073)
Dummy monetary policy rate introduction	0.034 (0.305)	0.128 (0.238)	0.1260 (0.201)	0.071 (0.216)	0.208 (0.199)	0.119 (0.042)	0.170 (0.359)	0.108 (0.167)	0.111 (0.16)	0.071 (0.166)	0.071 (0.123)
Observations	108	108	108	108	108	108	108	108	108	108	108
R-squared	0.394	0.391	0.296	0.429	0.344	0.563	0.375	0.410	0.391	0.345	0.301
Adjusted R-squared	0.352	0.349	0.246	0.389	0.298	0.523	0.332	0.368	0.349	0.299	0.252
S.E. of regression	0.648	0.580	0.612	0.530	1.197	1.300	1.103	0.713	0.723	0.837	0.636

Notes: Standard errors in parentheses are corrected for heteroskedasticity and autocorrelation with the Newey-West estimator. \*\*\*, \*\*, \* next to a number indicate statistical significance at 1, 5 and 10 percent, respectively.

Source: Authors' calculations.

**Table 3. ADL Model Estimation for Government Bonds**

	Domestic			External
	Five years	Seven years	Ten years	Ten years
Diff. monetary policy rate	0.567*** (0.168)	0.48*** (0.109)	0.447*** (0.138)	-0.009 (0.073)
Lag diff. monetary policy rate	0.554*** (0.184)	0.759*** (0.181)	0.463** (0.195)	-0.104* (0.06)
Lag diff. dependent variable	-0.493*** (0.136)	-0.325** (0.137)	-0.210 (0.158)	-0.104* (0.06)
Diff. reserve requirement coefficient	0.040 (0.719)	0.073 (0.047)	-0.125** (0.057)	-0.010 (0.023)
Diff. EMBI	0.945** (0.44)	0.680 (0.459)	0.473 (0.347)	1.018*** (0.08)
Diff. VIX	-0.074* (0.04)	-0.019 (0.034)	-0.043** (0.02)	-0.026*** (0.007)
Dummy inflation targeting	-0.356 (0.289)	0.064 (0.273)	-0.086 (0.163)	0.035 (0.076)
Dummy monetary policy rate introduction	0.298 (0.232)	0.018 (0.183)	0.167 (0.181)	0.031 (0.058)
Constant	-0.120 (0.198)	-0.197 (0.212)	-0.180 (0.118)	-0.075 (0.062)
Observations	54	41	57	61
R-squared	0.398	0.341	0.255	0.682
Adjusted R-squared	0.291	0.176	0.131	0.633
S.E. of regression	0.867	0.593	0.565	0.186

Notes: Standard errors in parentheses are corrected for heteroskedasticity and autocorrelation with the Newey-West estimator. \*\*\*, \*\*, \* next to a number indicate statistical significance at 1, 5 and 10 percent, respectively. Source: Authors' calculations.

### C. Simulation

In order to evaluate the effect of an exogenous monetary policy shock, we conduct a simulation exercise to generate time paths for all the retail rates. The policy experiment consists of a policy tightening corresponding to an increase by one percentage point in the monetary policy rate, starting from a situation in which the system is in equilibrium and simulating the adjustment of the retail rates over the following year. Figure 3 presents the symmetric adjustment path for all retail rates, as well as the asymmetric adjustment path for the three-month rates.<sup>21</sup>

While the symmetric adjustment dynamics for different maturities are slightly different, they all imply changes in spreads between 0.0 and 0.2 percentage points when the adjustment is completed. On impact, an increase in the monetary policy rate generates a negative spread of about 0.1 percentage points only for the three-month rates. The spread, however, approaches zero after one month owing to the faster adjustment of the lending rate. As the simulated adjustment is symmetric by construction, any monetary policy easing implies a reduction in banks' profitability by the same amount during the first month.

Personal consumption and commercial loans are the fastest in incorporating monetary policy changes. However, given the lower pass-through for the former, the adjustment completes

<sup>21</sup> The law of motion for the retail rates is defined as  $rr_t = \gamma_1 + \rho(\beta_1 - \gamma_1)$ , where  $\gamma_1$  is the short-run impact of the monetary policy rate from equation (3),  $\rho$  is the speed of adjustment from equation (3), and  $\beta_1$  is the long-run impact of the monetary policy from equation (3). In the case of the asymmetric adjustment,  $\rho$  is alternatively  $\rho_1$  or  $\rho_2$  from equation (8).

earlier despite a lower speed of adjustment. Mortgage loans, possibly because of the higher frequency at which they are taken, display a small short-run effect from the monetary policy rate change, but their speed of convergence to long-run equilibrium is similar to the one of commercial loans.

Finally, we present the asymmetric adjustment path for the three-month rates. By construction, the short- and long-run impact is the same regardless of whether the shock generates a deviation above or below the threshold. However, the different speeds of adjustments imply that deviations above the threshold (i.e., monetary policy rate cuts) are corrected in a much faster fashion than deviations below it (i.e., monetary policy rate hikes) for deposit rates, while the opposite is true for lending rates.

## V. CONCLUSIONS

This paper investigates the interest rate pass-through of monetary policy rates to retail rates in the Dominican Republic. Based on a recent ten-year monthly sample from 2006 to 2015, we estimate the interest rate pass-through for deposit and lending rates at different maturities and for loan category rates. Also, we explore the costs associated with changes in the monetary policy stance by estimating the interest rate pass-through to government bond rates. Finally, we investigate whether the speed of the monetary transmission mechanism is conditional on whether the monetary policy becomes more contractionary or expansionary, and we simulate the impact of monetary policy rate changes on the retail rates.

We find that while the pass-through to deposit and lending rates is complete, confirming the effectiveness of the monetary policy transmission mechanism. Government domestic bond rates also react to monetary policy changes. Moreover, our results reveal that the pass-through to lending rates is generally faster than to deposit rates. Finally, we find some evidence of asymmetric adjustment as short-term deposit rates respond faster to monetary policy rate cuts than hikes, and short-term lending rates respond faster to monetary policy rate hikes than cuts.

The theoretical literature explains asymmetric adjustment in the speed of adjustment of retail rates with the collusive market hypothesis. In particular, the bargaining power of banks could explain why the lending rates exhibit downward rigidity to a monetary policy rate cut and upward flexibility to a monetary policy rate hike. From a policy perspective, measures to reduce bank concentration and boost competition in the financial system could be instrumental in enhancing the effectiveness of monetary policy transmission mechanism by reducing asymmetries in the adjustment of retail rates.

**Table 4. Asymmetric M-TAR ECM Estimation for Retail Rates**

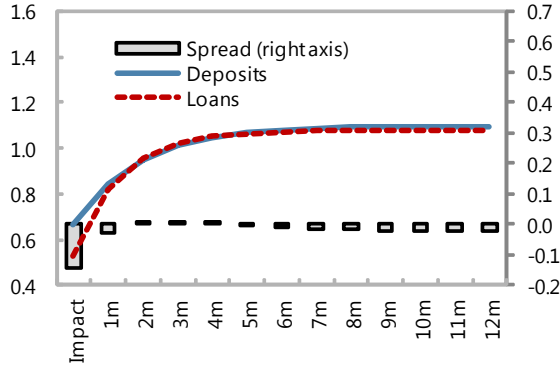
	Deposit rates				Lending rates			Loan category rates		
	Three months	Six months	One year	Weighted average	Three months	One year	Weighted average	Commercial	Personal consumption	Mortgage
Short-run equation										
Speed of adjustment above $\tau$	-0.493** (0.2)	-0.287** (0.122)	-0.268** (0.133)	-0.361** (0.181)	-0.372*** (0.107)	-0.531*** (0.099)	-0.292*** (0.096)	-0.112 (0.163)	-0.123 (0.135)	-0.309* (0.176)
Speed of adjustment below $\tau$	-0.361*** (0.086)	-0.117 (0.086)	-0.361** (0.165)	-0.257*** (0.082)	-0.789*** (0.153)	-0.519*** (0.123)	-0.284** (0.109)	-0.353*** (0.073)	-0.37*** (0.092)	-0.21*** (0.068)
Diff. monetary policy rate	0.668*** (0.102)	0.648*** (0.092)	0.466*** (0.166)	0.587*** (0.094)	0.553** (0.245)	0.784*** (0.16)	0.782*** (0.12)	0.763*** (0.156)	0.75*** (0.186)	0.57*** (0.125)
Diff. reserve requirement coefficient	-0.005 (0.092)	0.215*** (0.07)	0.0220 (0.067)	0.187*** (0.038)	-0.018 (0.248)	0.005 (0.207)	0.257* (0.133)	0.228* (0.128)	0.181 (0.146)	0.100 (0.185)
Diff. NPLs	-0.301** (0.142)	-0.273** (0.117)	-0.2560 (0.212)	-0.324*** (0.104)	0.744** (0.289)	0.199 (0.321)	0.438*** (0.165)	0.287* (0.164)	0.685** (0.309)	0.119 (0.136)
Diff. EMBI	0.277*** (0.08)	0.239*** (0.09)	0.2** (0.083)	0.215*** (0.079)	0.657*** (0.215)	0.139 (0.114)	0.272** (0.107)	0.326*** (0.114)	0.009 (0.077)	0.193** (0.096)
Diff. VIX	-0.010 (0.014)	0.000 (0.011)	0.0220 (0.016)	0.005 (0.01)	-0.044 (0.031)	0.009 (0.033)	-0.004 (0.019)	-0.008 (0.022)	0.04** (0.016)	0.014 (0.016)
Dummy inflation targeting	-0.067 (0.282)	-0.142 (0.214)	-0.1490 (0.183)	-0.090 (0.199)	-0.230 (0.177)	-0.126 (0.29)	-0.137 (0.131)	-0.163 (0.125)	-0.128 (0.115)	-0.103 (0.074)
Dummy monetary policy rate introduction	0.038 (0.3)	0.143 (0.23)	0.1270 (0.197)	0.078 (0.212)	0.227 (0.22)	0.121 (0.358)	0.170 (0.169)	0.178 (0.159)	0.095 (0.168)	0.077 (0.121)
Observations	108	108	108	108	108	108	108	108	108	108
R-squared	0.390	0.399	0.288	0.425	0.380	0.369	0.411	0.407	0.366	0.309
Adjusted R-squared	0.340	0.350	0.229	0.378	0.330	0.317	0.363	0.358	0.314	0.253
S.E. of regression	0.651	0.579	0.615	0.529	1.175	1.096	0.715	0.716	0.832	0.633
Wald test (H0: speed of adj. above $\tau$ = speed of adj. below $\tau$ )	6.423**	1.266	0.209	0.253	7.311***	0.005	0.004	1.582	2.131	0.324

Notes: Standard errors in parentheses are corrected for heteroskedasticity and autocorrelation with the Newey-West estimator. \*\*\*, \*\*, \* next to a number indicate statistical significance at 1, 5 and 10 percent,

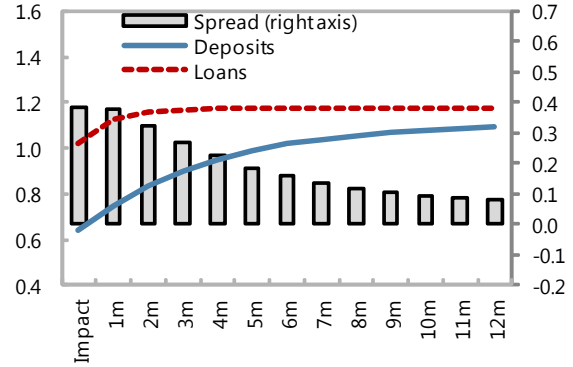
Source: Authors' calculations.

**Figure 3. Timing of One-Percentage Point Change in the Monetary Policy Rate (Percentage points)**

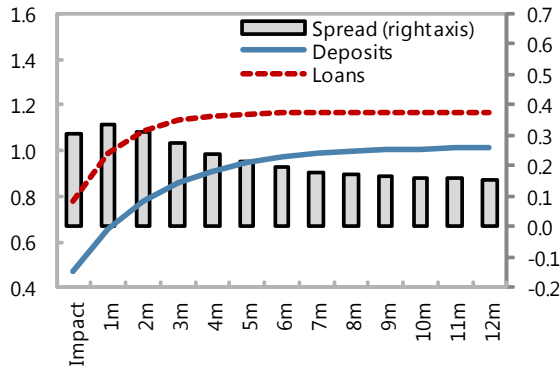
**Interest Rate Pass-Through on Three-Month Rates**



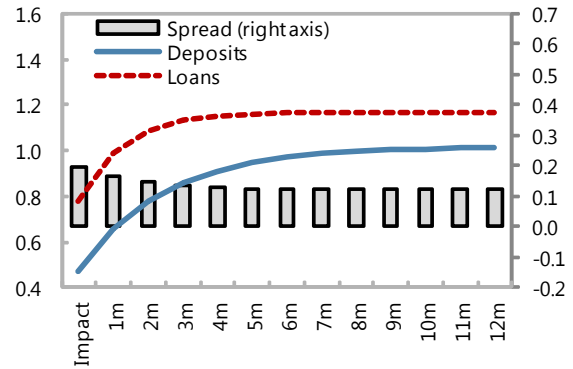
**Interest Rate Pass-Through on Six-Month Rates**



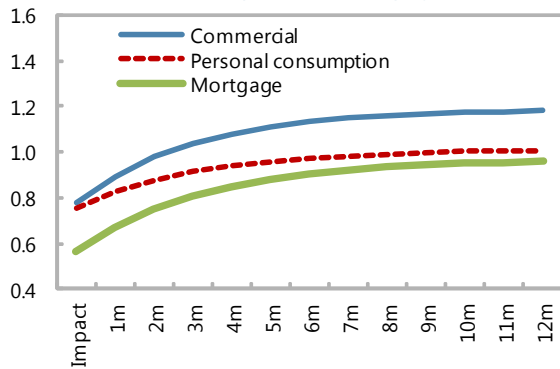
**Interest Rate Pass-Through on One-Year Rates**



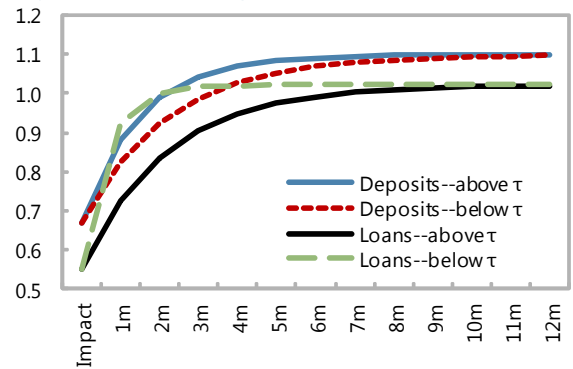
**Interest Rate Pass-Through on Weighted Average Rates**



**Interest Rate Pass-Through on Loan Category Rates**



**Asymmetric Pass-Through on Three-Month Rates**



Notes: Deviations above  $\tau$  correspond to monetary policy rate cuts, while deviations below  $\tau$  correspond to monetary policy rate hikes.  
Source: Authors' calculations.

## Appendix I. Variable Description and Source

Variable	Description	Source
Monetary policy rate	Previous month's interest rate for monetary policy operations.	Central Bank of the Dominican Republic
Three-month deposit rate	Simple average of interest rate on 90-day deposits of multiple banks	Central Bank of the Dominican Republic
Six-month deposit rate	Simple average of interest rate on 180-day deposits of multiple banks	Central Bank of the Dominican Republic
One-year deposit rate	Simple average of interest rate on 360-day deposits of multiple banks	Central Bank of the Dominican Republic
Weighted average deposit rate	Weighted average of interest rate on deposits of multiple banks	Central Bank of the Dominican Republic
Three-month lending rate	Simple average of interest rate on 90-day loans of multiple banks	Central Bank of the Dominican Republic
Six-month lending rate	Simple average of interest rate on 180-day loans of multiple banks	Central Bank of the Dominican Republic
One-year lending rate	Simple average of interest rate on 360-day loans of multiple banks	Central Bank of the Dominican Republic
Weighted average lending rate	Weighted average of interest rate on loans of multiple banks	Central Bank of the Dominican Republic
Commercial lending rate	Simple average of interest rate on commercial loans of multiple banks	Central Bank of the Dominican Republic
Personal consumption lending rate	Simple average of interest rate on personal consumption loans of multiple banks	Central Bank of the Dominican Republic
Mortgage lending rate	Simple average of interest rate on mortgage loans of multiple banks	Central Bank of the Dominican Republic
Interbank rate	Interest rate on interbank operations	Central Bank of the Dominican Republic
Five-year government bond rate	Weighted average of secondary market interest rate on five-year government bonds	Bloomberg
Seven-year government bond rate	Weighted average of secondary market interest rate on seven-year government bonds	Bloomberg
Ten-year government bond rate	Weighted average of secondary market interest rate on ten-year government bonds	Bloomberg
Reserve requirement coefficient	Reserve requirement coefficient on domestic currency deposits of commercial banks at the central bank	Central Bank of the Dominican Republic
NPLs	Share of loans being in default for over 30 days to total loans.	Superintendency of Banks of the Dominican Republic
EMBI	Emerging Market Bond Index of dollar-denominated sovereign bonds issued by the Dominican Republic	J.P. Morgan
VIX	Volatility index of market expectations of near-term volatility conveyed by S&P 500 stock index option prices	Chicago Board Options Exchange

## Appendix II. Unit Root and Cointegration Test Results

### Table A1. Unit Root, ADF Test

	Levels			First differences		
	No intercept, no trend	Intercept, no trend	Intercept, trend	No intercept, no trend	Intercept, no trend	Intercept, trend
Monetary policy rate	-1.490	-2.266	-2.399	-8.510***	-8.534***	-8.543***
Three-month deposit rate	-1.285	-2.910*	-2.999	-7.112***	-7.104***	-7.074***
Six-month deposit rate	-1.203	-3.212**	-3.328*	-5.567***	-5.558***	-5.541***
One-year deposit rate	-1.331	-3.114**	-3.275*	-6.546***	-6.540***	-6.526***
Weighted average deposit rate	-1.355	-3.537**	-3.696**	-5.214***	-5.207***	-5.192***
Three-month lending rate	-1.056	-2.516	-2.712	-11.970***	-11.938***	-11.907***
Six-month lending rate	-1.079	-2.242	-2.466	-15.009***	-14.971***	-14.907***
One-year lending rate	-1.119	-2.442	-2.579	-12.273***	-12.238***	-12.170***
Weighted average lending rate	-0.990	-2.314	-2.494	-7.407***	-7.398***	-7.360***
Commercial lending rate	-0.968	-2.231	-2.369	-7.576***	-7.561***	-7.531***
Personal consumption lending rate	-0.833	-2.468	-2.560	-7.804***	-7.792***	-7.746***
Mortgage lending rate	-1.175	-2.286	-2.790	-6.050***	-6.063***	-6.014***
Five-year government domestic bond	-1.962**	-3.113**	-3.414*	-12.655***	-13.009***	-12.787***
Seven-year government domestic bond	-2.002**	-2.182	-2.577	-6.808***	-7.053***	-6.966***
Ten-year government domestic bond	-1.458	-0.806	-2.000	-7.556***	-7.696***	-7.643***
Ten-year government external bond	-1.416	-1.559	-2.024	-6.451***	-6.534***	-6.497***

Notes: The null hypothesis is that the series has a unit root. The lagged differences are included in the specifications to obtain white noise residuals. The Schwartz Information Criterion is used to select the optimal lag length. \*\*\*, \*\*, \* next to a number indicate statistical significance at 1, 5 and 10 percent, respectively.

Source: Authors' calculations.

### Table A2. Cointegration, Engle-Granger Test

Three-month deposit rate	-5.489***
Six-month deposit rate	-5.531***
One-year deposit rate	-4.928**
Weighted average deposit rate	-6.185**
Three-month lending rate	-6.187***
Six-month lending rate	-8.774***
One-year lending rate	-6.806***
Weighted average lending rate	-6.741***
Commercial lending rate	-6.373***
Personal consumption lending rate	-6.158***
Mortgage lending rate	-7.324***
Five-year government domestic bond	-3.640
Seven-year government domestic bond	-3.224
Ten-year government domestic bond	-3.094
Ten-year government external bond	-3.040

Notes: The null hypothesis is that the series do not have a cointegration relationship. The Schwartz Information Criterion is used to select the optimal lag length. The critical values are from MacKinnon (1991). \*\*\*, \*\*, \* next to a number indicate statistical significance at 1, 5 and 10 percent, respectively.

Source: Authors' calculations.



**Table A3. Cointegration, TAR and M-TAR Tests with Threshold Set to Zero**

	TAR		M-TAR	
	$\Phi (\rho_1=\rho_2=0)$	$F (\rho_1=\rho_2)$	$\Phi (M) (\rho_1=\rho_2=0)$	$F(M) (\rho_1=\rho_2)$
Three-month deposit rate	14.588***	0.032	14.648***	0.124
Six-month deposit rate	15.649***	0.062	16.393***	1.202
One-year deposit rate	3.406	0.111	3.606	0.480
Weighted average deposit rate	18.225***	0.617	18.723***	1.355
Three-month lending rate	5.116*	0.481	6.975**	3.823
Six-month lending rate	8.884**	0.996	16.393***	1.202
One-year lending rate	20.237***	0.141	3.605	0.480
Weighted average lending rate	17.890***	0.015	18.055***	0.260
Commercial lending rate	19.294***	0.048	19.418***	0.228
Personal consumption lending rate	2.211	0.018	2.276	0.143
Mortgage lending rate	17.346***	1.393*	18.007***	2.392

Notes: The null hypothesis of the test statistic  $\Phi$  is that the series do not have a cointegration relationship, and the null hypothesis of the test statistic  $F$  is that the series have symmetric cointegration relationships. The critical values are generated via Monte Carlo simulations. \*\*\*, \*\*, \* next to a number indicate statistical significance at 1, 5 and 10 percent, respectively.

Source: Authors' calculations.

**Table A4. Cointegration, TAR and M-TAR Tests with Endogenously Determined Threshold**

	TAR			M-TAR		
	$\Phi (\rho_1=\rho_2=0)$	$F (\rho_1=\rho_2)$	$\tau$	$\Phi (\rho_1=\rho_2=0)$	$F (\rho_1=\rho_2)$	$\tau$
Three-month deposit rate	15.165***	0.929	-0.613	16.390***	2.835***	0.732
Six-month deposit rate	15.848***	0.367	-0.342	17.084***	2.260***	-0.316
One-year deposit rate	3.649	0.543	-0.727	5.338*	3.694***	0.089
Weighted average deposit rate	19.058***	1.851***	-0.525	19.848***	3.022***	0.341
Three-month lending rate	6.488**	2.948***	-1.292	7.932**	5.543***	-0.402
Six-month lending rate	9.334***	1.752***	0.505	8.806**	0.865	1.417
One-year lending rate	21.470***	1.908***	1.188	23.321***	4.562***	0.827
Weighted average lending rate	18.243***	0.538	0.853	19.547***	2.469***	-0.577
Commercial lending rate	19.916***	0.951	-0.889	20.300***	1.508**	-0.73
Personal consumption lending rate	2.295	0.178	-1.039	4.136	3.682***	0.082
Mortgage lending rate	18.416***	3.012***	-0.583	19.092***	4.033***	-0.024

Notes: The null hypothesis of the test statistic  $\Phi$  is that the series do not have a cointegration relationship, and the null hypothesis of the test statistic  $F$  is that the series have symmetric cointegration relationships.  $\tau$  is the estimated threshold. The critical values are generated via Monte Carlo simulations. \*\*\*, \*\*, \* next to a number indicate statistical significance at 1, 5 and 10 percent, respectively.

Source: Authors' calculations.

## References

- Andújar, Julio, 2012, “El Efecto Traspaso de las Tasas de Interés en República Dominicana”, Banco Central de la Republica Dominicana, Serie de Estudios Económicos, Vol. 4.
- Andújar, Julio, 2014, “La transición de la República Dominicana a metas de inflación”, *Revista Dominicana de Economía*, Vol. 5, pp. 99-120.
- Aristy Escuder, Jaime, 2014, “The Impact of Policy Interest Rate on Loan and Deposit Interest Rates,” *Ciencia y Sociedad*, Vol. 39, No. 4, pp. 683-702
- Becker, Ralf, Denise R. Osborn, and Dilem Yildirim, 2012, “A Threshold Cointegration Analysis of Interest Rate Pass-Through to UK Mortgage Rates,” *Economic Modeling*, Vol. 29, pp. 2504-2513.
- Berger, Allen N., and Gregory F. Udell, 1992, “Some Evidence on the Empirical Significance of Credit Rationing,” *Journal of Political Economy*, Vol.25, pp. 291-299.
- Bernanke, Ben, Mark Gertler, and Simon Gilchrist, 1996, “The Financial Accelerator and the Flight to Quality,” *Review of Economics and Statistics*, Vol. 78, No. 1, pp. 1-15
- Carner, Mehmet, and Bruce H. Hansen, 1998, “Threshold Autoregression With a Near Unit Root,” Working Paper, University of Wisconsin, Department of Economics.
- Banco Central de la Republica Dominicana, 2015, “Informe de Política Monetaria,” Mayo.
- De Bondt, Gabe J., 2002, “Retail Bank Interest Rate Pass-Through: New Evidence at the Euro Area Level,” Working Paper Series, Vol. 136, European Central Bank, Frankfurt, Germany.
- De Bondt, Gabe, Benoît Mojon, and Natacha Valla, 2003, “Term Structure and the Sluggishness of Retail Bank Rates in Euro Area Countries,” Mimeo, European Central Bank.
- De Bondt, Gabe J., 2005, “Interest Rate Pass-Through: Empirical Results for the Euro Area,” *Germany Economic Review*, Vol. 6, No. 1, pp. 37-78.
- Doornik, Jurgen, and David F. Hendry, 1994, *An Interactive Econometric Modelling System*. London: International Thompson Publishing.
- Égert, Balázs, and Ronald Macdonald, 2009, Monetary Transmission Mechanism in Central and Eastern Europe: Surveying the Surveyable,” *Journal of Economic Survey*, Vol. 23, No. 2, pp. 277-327.
- Égert, Balázs, Jesus Crespo-Cuaresma, and Thomas Reininger, 2007, “Interest Rate Pass-Through in Central and Eastern Europe: Reborn from Ashes Merely to Pass-Away,” *Journal of Policy Modeling*, Vol. 29, pp. 209-225.

- Enders, Walter, and Granger, Clive W. J., 1998, "Unit Root Tests and Asymmetric Adjustment with an Example Using the Term Structure of Interest Rates," *Journal of Business & Economic Statistics*, Vol. 16, pp. 304-311
- Enders, Walter, and Pierre L. Siklos, 2001, "Cointegration and Threshold Adjustment," *Journal of Business & Economic Statistics*, Vol. 19, No. 2, pp. 166-176.
- Fried, Joel, and Peter Howitt, 1980, "Credit Rationing and Implicit Contract Theory," *Journal of Money, Credit, and Banking*, Vol. 12, pp. 471-487.
- Gerali, Andrea, Stefano Neri, Luca Sessa, and Federico M. Signoretti, 2010, "Credit and Banking in a DSGE Model of the Euro Area," *Journal of Money, Credit and Banking*, Vol. 42, No. 1, pp. 107-141.
- Gertler, Mark, and Peter Karadi, 2011, "A Model of Unconventional Monetary Policy," *Journal of International Economics*, Vol. 58, pp. 17-34.
- González Pantaleón, Joel A., 2010, "Traspaso de la Política Monetaria a las Tasas de Interés de Mercado y sus Efectos en el Sector Real. Evidencia para República Dominicana," Nueva Literatura Económica Dominicana.
- Hamilton, James D., 1994, *Time Series Analysis*, Princeton, Princeton University Press.
- Hannan, Timothy. H., and Allen N. Berger, 1991, "The Rigidity of Prices: Evidence from the Banking Industry," *American Economic Review*, Vol. 81, No. 4, pp. 938-945.
- Hendry, David F., and Bent Nielsen, 2007, *Econometric Modeling: A Likelihood Approach* (Princeton, New Jersey: Princeton University Press).
- Lowe, Philip, and Thomas Rohling, 1992, "Loan Rate Riskiness: Theory and Evidence," Research Discussion Paper, Reserve Bank of Australia.
- Marotta, Giuseppe, 2009, "Structural Breaks in the Lending Interest Rate Pass-Through and the Euro," *Economic Modeling*, Vol. 26, pp. 191-205.
- Medina Cas, Stephanie, Florencia Frantischek, and Alejandro Carrion-Menendez, 2011, "The Policy Interest-Rate Pass-Through in Central America," IMF Working Paper 11/240 (Washington: International Monetary Fund).
- Mishkin, Frederic. S., 1995, "The Symposium of the Monetary Transmission Mechanism," *Journal of Economic Perspectives*, Vol. 9, No. 4, pp. 3-10.
- Neumark, David, and Steven Sharpe, 1992, "Market Structure and the Nature of Price Rigidity: Evidence from the Market for Consumer Deposits," *Quarterly Journal of Economics*, Vol. 107, pp. 657-680.

Rivas, 2011, "The Pass-Through of Interest Rates: The Case of the Dominican Republic," Pontificia Universidad Catolica de Chile, Instituto de Economia.

Rotemberg, Julio. J. and Garth Saloner, 1987, "The Relative Rigidity of Monopoly Pricing," *American Economic Review*, Vol. 77, pp. 917-926.

Stiglitz, Joseph E., and Andrew Weiss, 1981, "Credit Rationing in Markets with Imperfect Market Information," *American Economic Review*, Vol. 71, pp. 393-410.